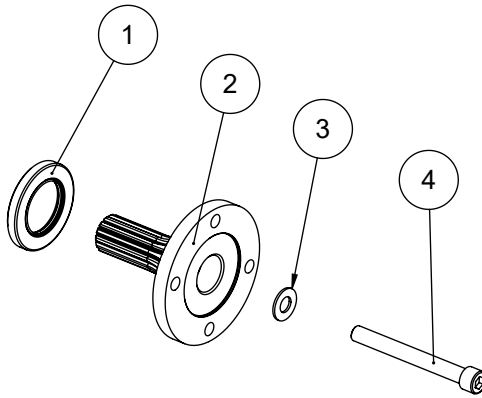




RM1 SERIES

14TK5664 "X4" COMPANION FLANGE KIT

CONVERSION KIT FOR 1410 SERIES RM1 OUTPUT

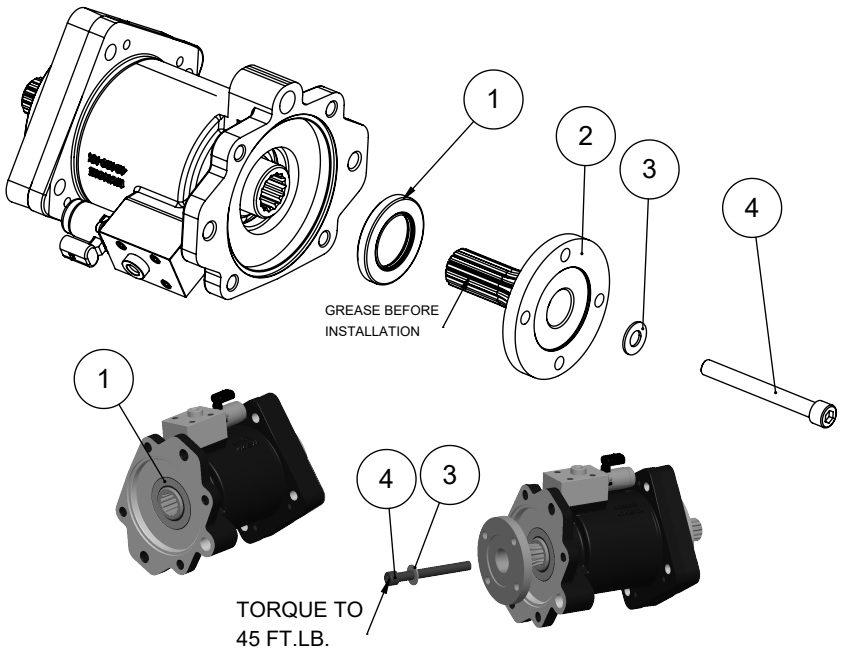


ITEM NO.	PART NUMBER	DESCRIPTION	QTY.
1	11T37795	OIL SEAL	1
2	14T42428	COMPANION FLANGE	1
3	21T43218	WASHER	1
4	19T42900	SOCKET HEAD CAPSCREW	1

Instructions:

The 14TK5664 requires that the RM1 series PTO has the SAE-C (CC Output Code). The SAE-C output is a wet spline and requires installation of a shaft seal before the companion flange yoke shaft is installed. Be sure to follow the instructions below.

1. Install shaft seal (1) into the output flange (2) of the RM1 using a seal driver which clears the RM1 output shaft. The seal face should be flush with the surface of the RM1.
2. Lubricate the spline of the flange shaft (2) with high temperature lithium type grease. Insert the spline (2) into the RM1 output spline.
3. Insert the capscrew (4) through the flat washer (3) and into the flange shaft (2). Screw the capscrew (4) into the output shaft thread hole, making sure washer (3) is flat against the inside surface of the flange shaft (2).
4. Torque the capscrew to 45 ft.lb.



**Muncie®
Power
Products**

Member of the *Interpump Group*
IN16-08 (09/16)

201 East Jackson Street • Muncie, Indiana 47305
800-367-7867 • Fax 765-284-6991
info@munciepower.com • www.munciepower.com
Specifications are subject to change without notice.
Visit www.munciepower.com for warranties and literature.
All rights reserved. © Muncie Power Products, Inc. (2016)