



**Muncie®
Power
Products**

KEEP IN VEHICLE
READ OPERATING INSTRUCTIONS
INSIDE BEFORE OPERATING PTO

INSTALLATION INSTRUCTIONS

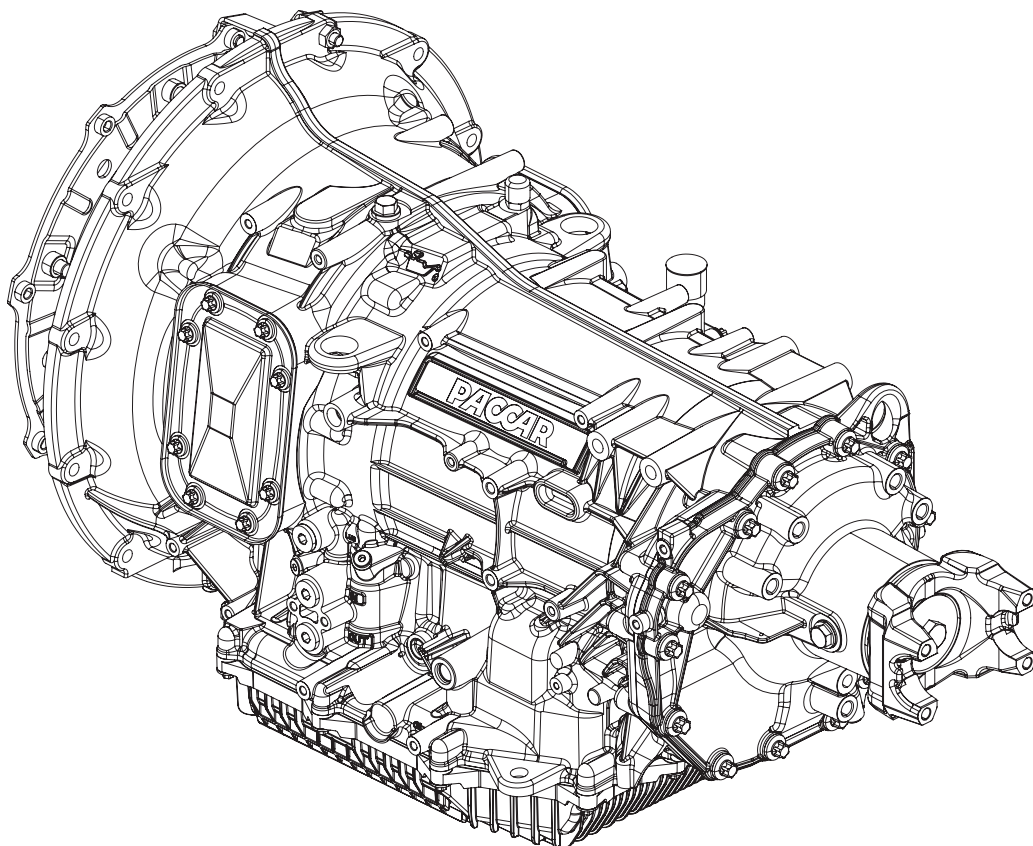
P58/P60 PTO INSTALLATION ON PACCAR TX8 TRANSMISSIONS

REQUIRES FOLLOWING PACCAR PTO PREP CODES:

4233510 PARK BRAKE INTERLOCK FOR TRANSMISSION MOUNTED PTO
4233900 (1) DASH MTD SINGLE ACTING EOA PTO CTRL ELECTRIC OVER AIR

REQUIRES ONE OF FOLLOWING:

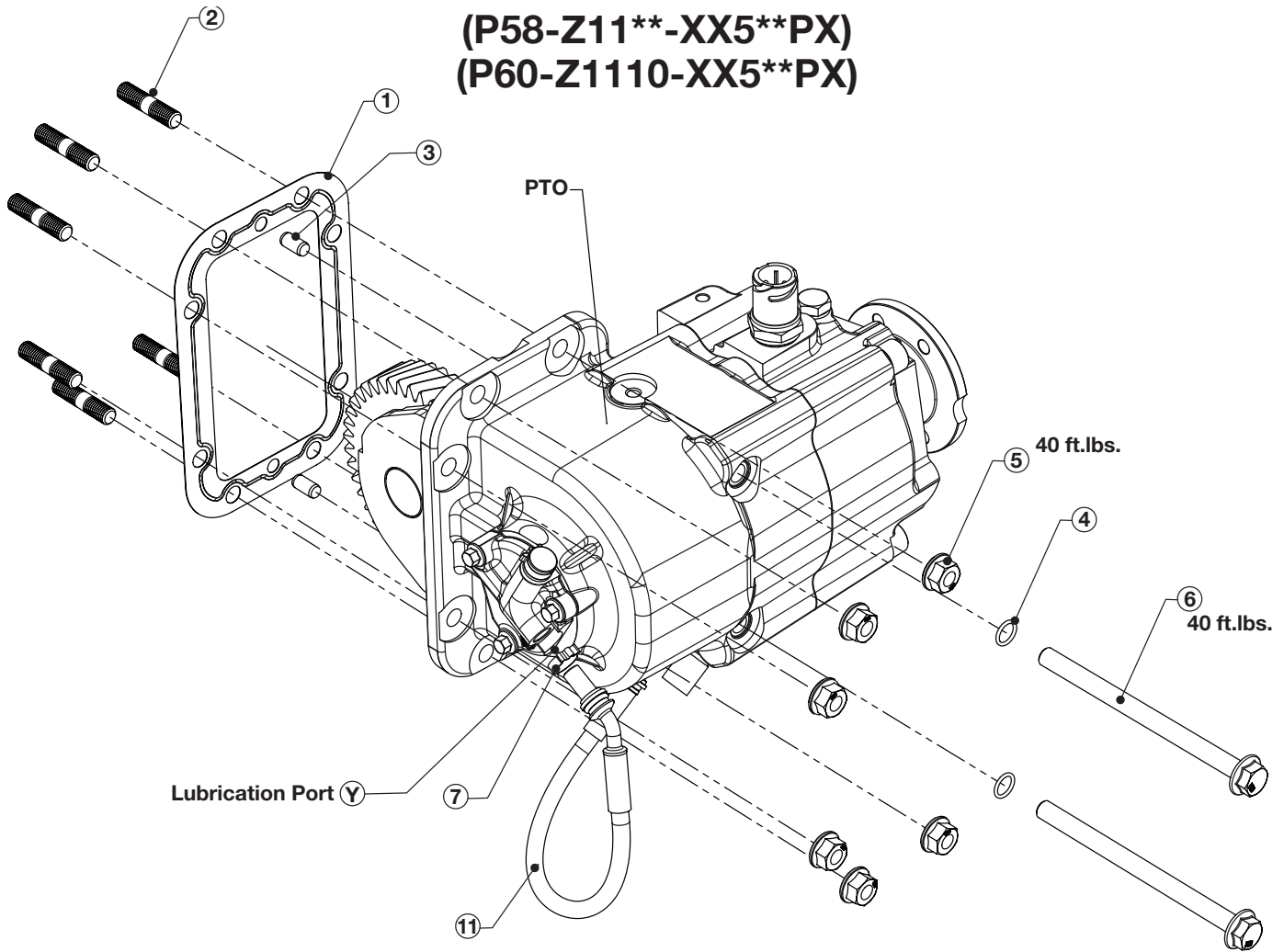
4257110 LH MOUNTED TRANS PTO PROVISIONS
4257120 RH MOUNTED TRANS PTO PROVISIONS



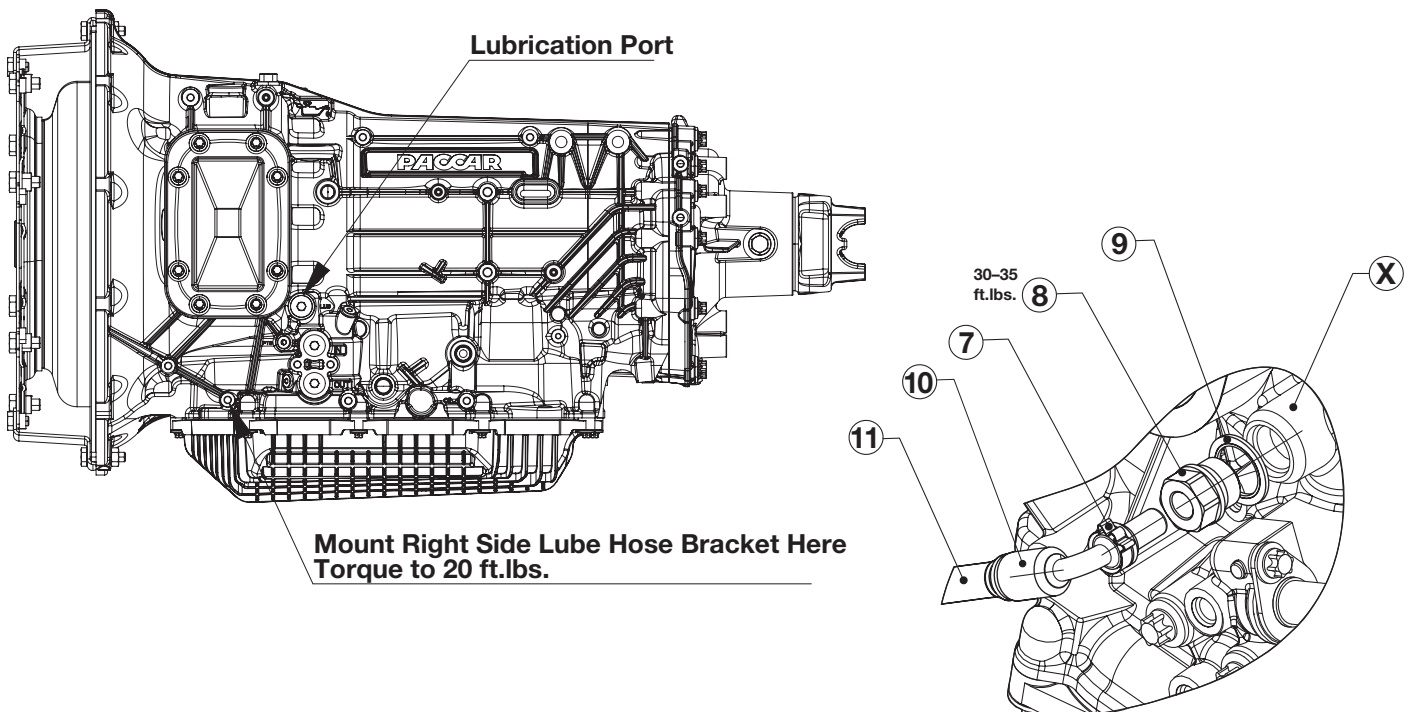
LEFT SIDE PTO INSTALLATION

(P58-Z11**-XX5**PX)

(P60-Z1110-XX5**PX)



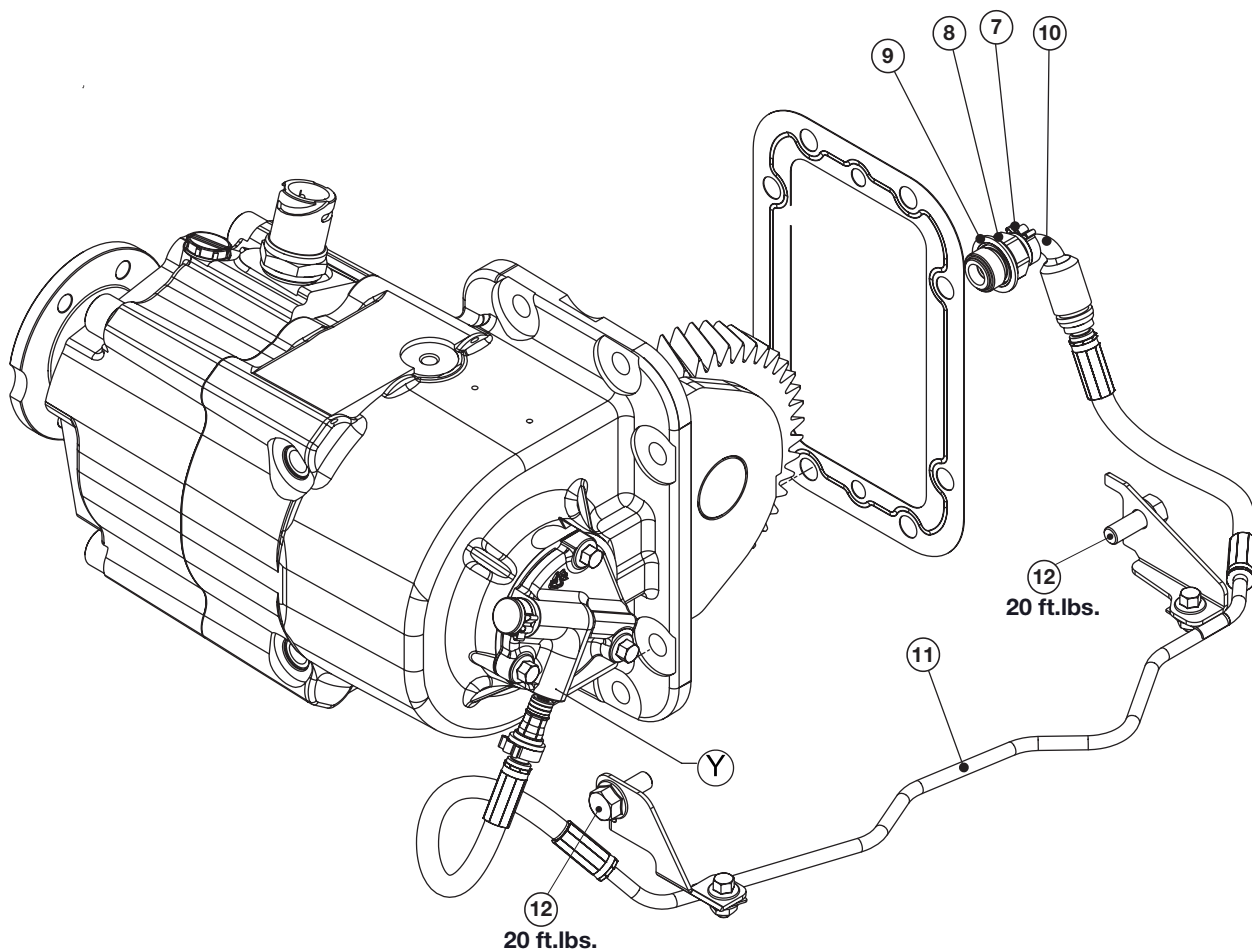
Left Side View



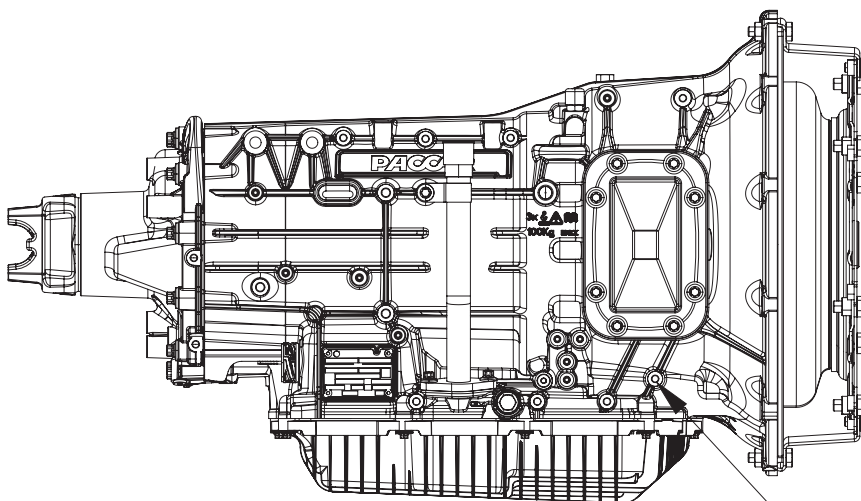
RIGHT SIDE PTO INSTALLATION

(P58-Z11**-XX5**BX)

(P60-Z1110-XX5**BX)



Right Side



Mount Right Side Lube Hose Bracket Here
Torque to 20 ft. lbs.

INSTALLATION INSTRUCTIONS

1. Remove the left (driver's side) PTO opening cover and carefully clean the mounting surface. **Clean and degrease all holes. Do not use the original cap screws and gasket.**
2. Fit the studs (Item 2) on the PTO opening and **tighten to 15–18 ft.lbs. (Loctite 242 on all studs)**
3. Place the gasket (Item 1) onto the studs (Item 2).
4. Fit the dowels (Item 3) into the PTO, in the 12 o'clock and 6 o'clock holes.
5. Place cap screws with O-Rings (Items 4 & 6) in 2 o'clock & 4 o'clock holes.
6. Mount the PTO onto the transmission.
7. Fasten the nuts (Item 5) onto the studs (Item 2), and install cap screws. **Tighten to 35–40 ft.lbs.**
8. Thread the adapter (Item 8) with its washer (Item 9) in the correct lubrication oil port (Item X) on the transmission and **tighten to 30–35 ft.lbs.**
9. **Right Side Only:** Mount the lube line (Item 11) onto the transmission with the required support brackets and tighten the bracket mounting cap screws (Item 12) to **20 ft.lbs.**
10. Insert the 90° fitting (Item 10) into the adapter (Item 8).
11. Insert one connector of the lube hose (Item 11) on the PTO, into the lubrication port on PTO (Item Y).
12. Insert the opposite fitting in the 90° fitting (Item 10) on the transmission.
13. Finally, insert the safety clip (Item 7) into the correct O-Ring groove of the hose fitting. This can be done by hand and does not require tools.

REQUIRED TOOLS

19mm Socket

15mm Socket

Stud Driver

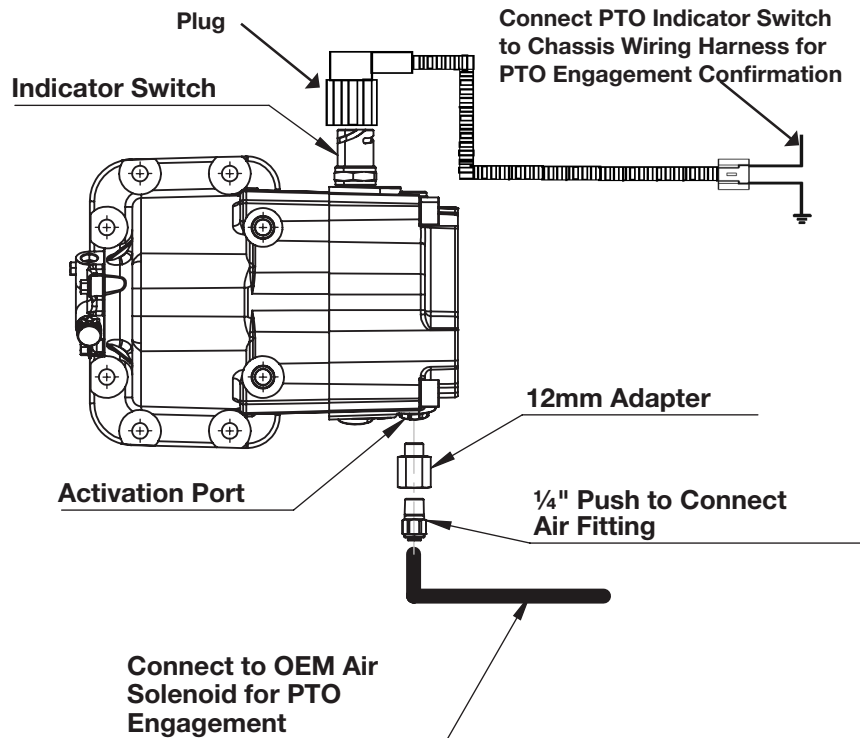
E14 Torx Socket

15mm Combination Wrench

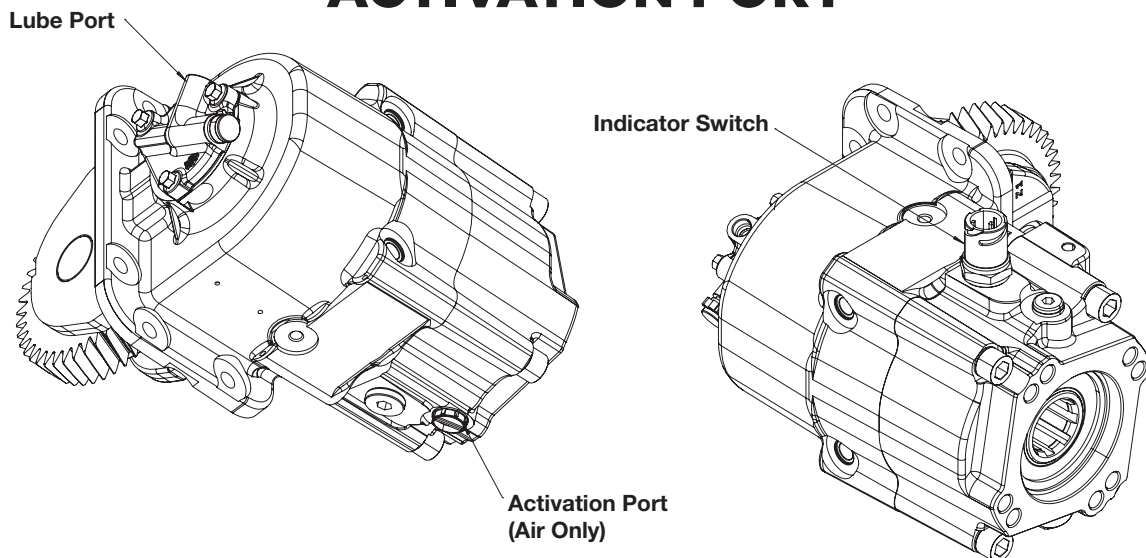
Torque Wrench

P58/P60 PTO DIAGRAM

PTO Indicator Switch connected to Chassis Wiring harness
and PTO Activation Connection for OEM Solenoid for PTO Engagement



PTO LUBE PORT, INDICATOR SWITCH, AND ACTIVATION PORT



PACCAR PTO PREP CODES:

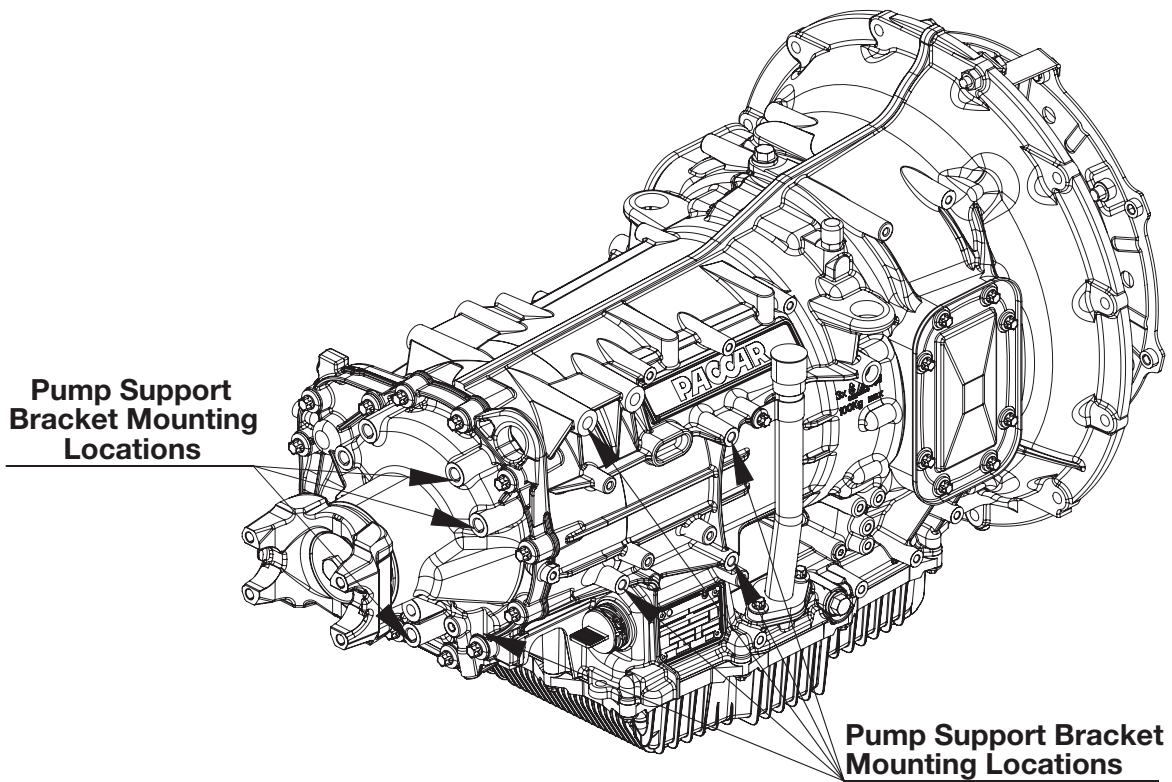
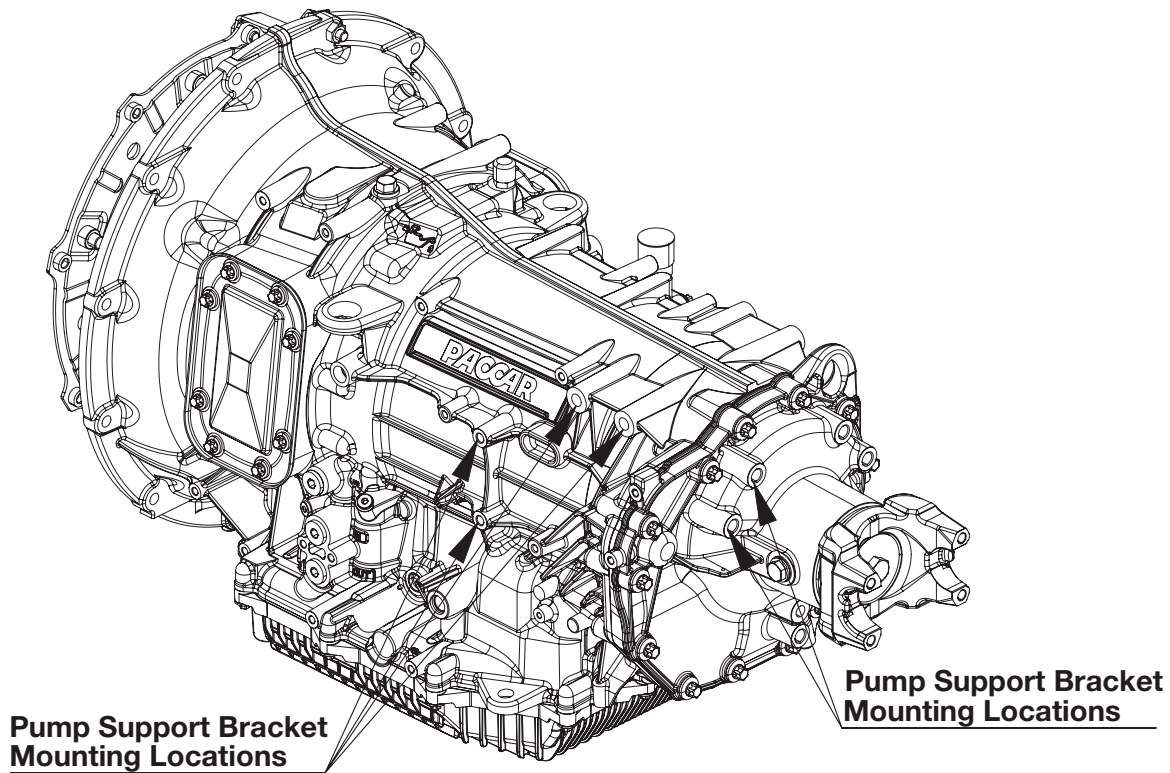
4233510 Park brake Interlock for transmission mounted PTO
4233900 (1) Dash MTD single-acting EOA PTO control electric over air

REQUIRES ONE OF FOLLOWING:

4257110 LH mounted transmission PTO provisions
4257120 RH mounted transmission PTO provisions

PUMP SUPPORT BRACKET MOUNTING LOCATIONS

Pump support brackets are required for all direct mount hydraulic pumps exceeding 20 lbs., including hoses, fittings, etc.



PTO Activation only permitted in stationary or crawl model.
Read PTO Operator's Manual IN17-04 prior to operating PTO!



**Muncie®
Power
Products**

A Member of the Interpump Group

IN21-12 (Rev. 05-24)

201 East Jackson Street, Muncie, Indiana 47305
800-367-7867 • Fax: 765-284-6991 • info@munciepower.com

Specifications are subject to change without notice. Visit www.munciepower.com
for warranties and literature. All rights reserved. © Muncie Power Products, Inc. (2021)