



# Z21 8-BOLT PTO INSTALLATION RAM TorqueFlite HD/ZF PowerLine Series and PACCAR TX-8 Transmissions

1. **Label Placement** - The PTO ships with 4 WARNING LABELS. Make sure mounting surfaces are clean before placing labels. Place labels as shown below.



## Frame Rail Labels

Place on frame rail or truck body on both sides of vehicle. Must be clearly visible by anyone who might go under truck or near PTO. Clean surface thoroughly before installation.  
**DO NOT PAINT OVER LABELS**

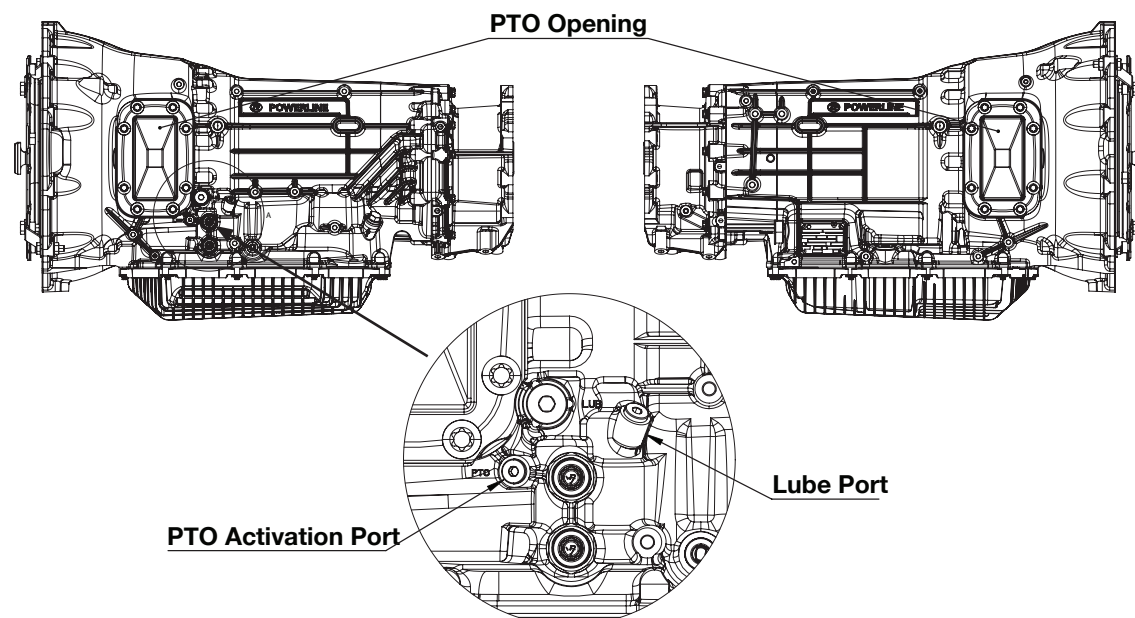
## Interior Labels

Place 2" x 3" PTO Equipped Caution label within cab in clear view of operator and near PTO control. Place 4" x 6.5" Visor Label on visor on operator's side of vehicle.  
**DO NOT COVER ANY VEHICLE AIR BAG WARNING LABEL!**

2. With PARK brake set, place truck in neutral and start engine. Listen to engine and transmission. Any transmission gear noise may be more noticeable after PTO is installed.  
**STOP ENGINE. NEVER GO UNDER VEHICLE WITH ENGINE RUNNING!**

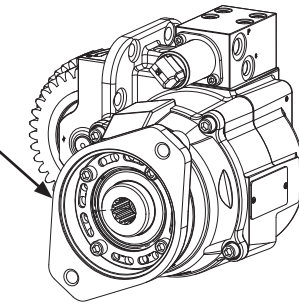
Find PTO opening on transmission.

RAM 3500, 4500, and 5500 chassis have a PTO patch panel present in the passenger side floorboard. This panel can be removed to allow access to the passenger side PTO opening. Instructions for how to remove and reinstall patch panel are available from RAM.



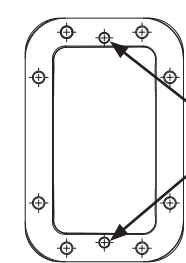
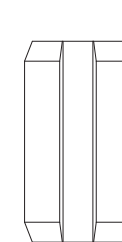
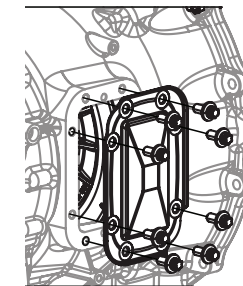
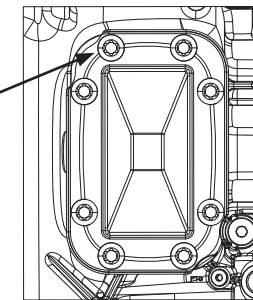
3. Adjust output flange if necessary. See below for proper torque values. Remove cap screws and flange mounting ring to adjust output flange. **Once positioned, reinstall ring and torque to 22 ft.lbs. (4 plcs)**

Remove cap screws and flange mounting ring to adjust output flange. Once positioned, reinstall ring and torque to 22 ft.lbs. (4 plcs)



4. Remove transmission PTO cover plate and gasket. **Caution:** Some transmission fluid may escape opening. Take care to keep contaminants out of transmission with cover off. Verify PTO gear is present in transmission. Locate the PTO mounting kit. Find alignment pins (2 plcs), and install in the correct location (see below).

PTO cover plate cap screws require an E14 Torx socket for removal



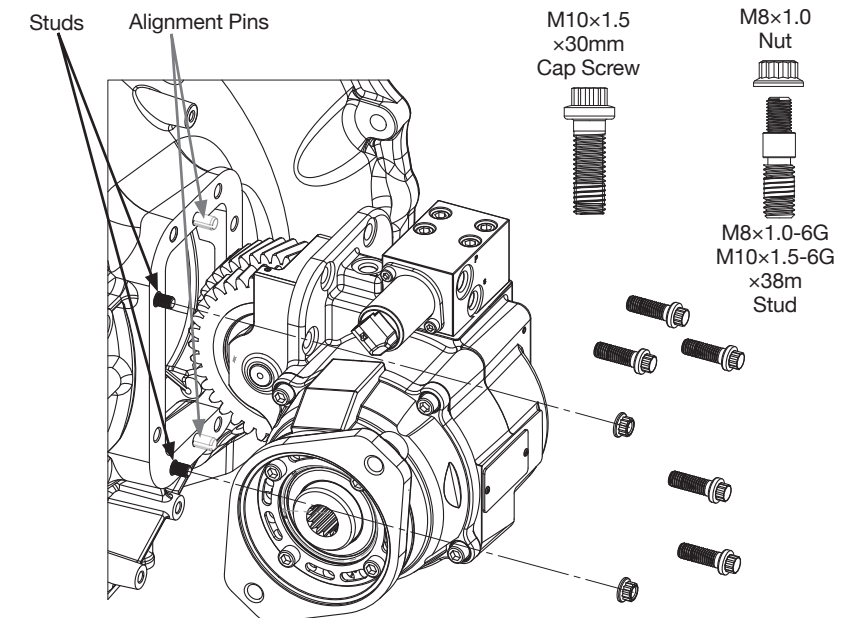
Alignment Pins

## DISCARD FACTORY GASKET

5. Install supplied gasket over alignment pins. A thin coating of approved transmission fluid on gasket is recommended to help hold gasket to opening. Mount PTO with provided cap screws, studs, and nuts. Check for proper PTO fit on transmission prior to tightening down fasteners. PTO mounting surface must be flush against transmission prior to tightening mounting fasteners! Failure to do so may result in damage to PTO housing. Tighten top and bottom cap screws first.

**Install Following:** Gasket (1 pc), 30 mm cap screws, studs and nuts used in remaining positions (8 plcs). **TORQUE ALL TO 45 ft.lbs. Included fasteners have pre-installed thread locker patches on threads. Use of additional thread locker not required.**

*Continue to Activation Instructions (separate document).*



201 East Jackson Street, Muncie, Indiana 47305  
800-367-7867 • Fax: 765-284-6991 • info@munciepower.com  
Specifications are subject to change without notice. Visit [www.munciepower.com](http://www.munciepower.com) for warranties and literature. All rights reserved. © Muncie Power Products, Inc. (2025)