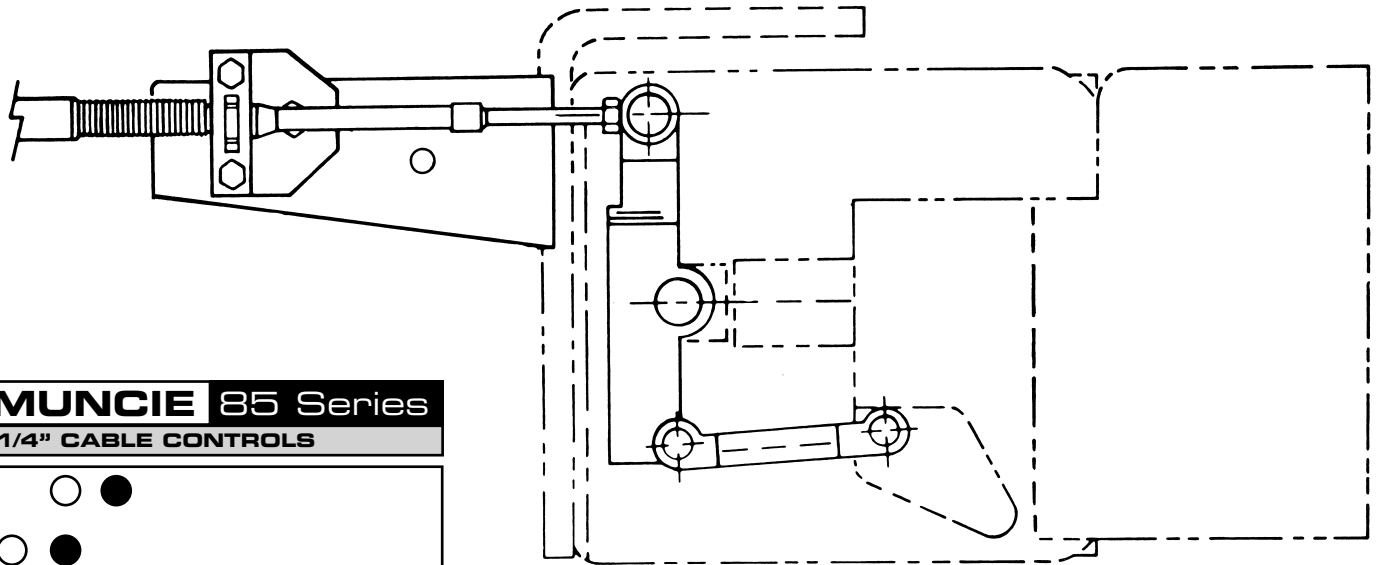




EHK-R

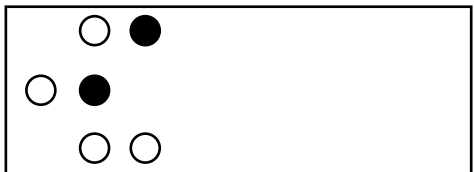
INSTALLATION INSTRUCTIONS

E SERIES DUMP PUMP REMOTE MOUNT



MUNCIE 85 Series

1/4" CABLE CONTROLS



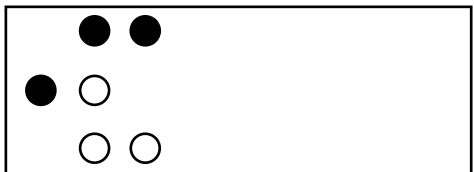
Use 1-1/4"-20 Thd. x 5/8" fastener to mount cable pad to base. Mount strap with 2-1/4"-20 x 1" fasteners.

**2-Holes used for mounting
1/4"-28 Thd. cables.**

NOTE: Bracket can be mounted on either top or bottom by also rotating spool cap.

MUNCIE 165 Series

5/16" CABLE CONTROLS



Use 2-1/4"-20 Thd. x 5/8" fastener to mount cable pad to base. Mount strap with 2-1/4"-20 x 1" fasteners.

**3-Holes used for mounting
5/16"-24 Thd. cables.**

