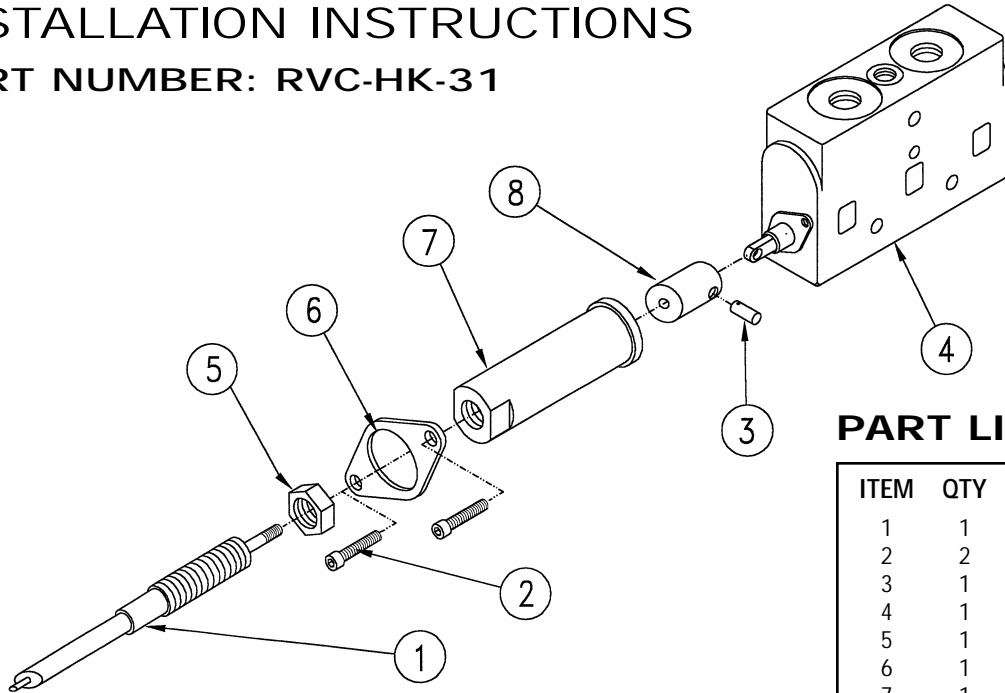




# REMOTE VALVE HOOK-UP KIT FOR MUNCIE 31 SERIES VALVE

## INSTALLATION INSTRUCTIONS

PART NUMBER: RVC-HK-31



### PART LIST

ITEM	QTY	DESCRIPTION
1	1	Control Cable
2	2	Mounting Screw
3	1	Cable Clevis Pin
4	1	31 Series Valve
5	1	Jam Nut
6	1	Housing Retainer
7	1	Cable Connector Housing
8	1	Cable Clevis

*NOTE: Items 1 and 4 are not included in the RVC-HK-31 Hook-Up Kit.*

## INSTALLATION

- 1) Thread jam nut (item 5) onto entire length of threaded hub on the cable (item 1). Place 1 housing retainer (item 6) over the threaded hub of the control cable letting it rest on the jam nut. Pull 1/4" threaded rod of control cable to the extended position. Turn the cable connector housing (item 7) entire length of threaded hub up against jam nut. Turn threaded cable clevis (item 8) onto entire length of 1/4" threaded end of the control cable.
- 2) Remove 1/4" phillips screws from the valve spool seal retainer on the 31 series valve. Leave the spool seal retainer on the valve. Align the holes in the cable clevis with the hole in the valve spool. When aligned, insert the clevis pin (item 3) till it is flush with both sides of the cable clevis.
- 3) Now, thread the cable connector housing toward the 31 series valve. By doing this, you will obtain the correct distance needed to mount the cable connector housing. When you have obtained the correct distance from the 31 series valve, align the housing retainers and the valve spool seal retainer and insert the 2 mounting screws. Tighten mounting screws finger tight into valve body.

## ADJUSTMENT

- 1) Install the other end of the cable into the remote shifter unit.
- 2) By turning the cable connector housing, the lever of the remote shifter unit will begin to move. Adjust the cable connector housing till the desired lever position is obtained. Be sure that the valve spool can be fully stroked in both directions. If a center detent exists in the remote shifter unit, make certain the valve spool is in the neutral position when the lever is detented.
- 3) Firmly tighten the mounting screws then tighten the jam nut on the cable to the back side of the cable connector housing.



Muncie Power Products, Inc. General Offices & Distribution Center • P.O. Box 548 • Muncie, IN 47308-0548  
(765) 284-7721 • FAX (765) 284-6991 • E-mail info@munciepower.com • Web http://www.munciepower.com  
Drive Products, Inc., Toronto, Exclusive Agents for Canada