



REFUSE **PRODUCT OVERVIEW**



POWER TAKE-OFFS AND HYDRAULIC COMPONENTS





Muncie Power Products, Inc. is a proud manufacturer of power take-offs and fluid power components for applications within the refuse industry. Since the company was founded in 1935, Muncie Power Products has taken great pride in providing unparalleled service to each and every customer. In collaboration with other companies within the Interpump Group, Muncie Power Products has the ability to provide access to nearly every major component in a hydraulic system with the dependability you've come to expect from Muncie Power Products.

At Muncie Power Products, it's about more than building hydraulic components; it's about building trust.



**WE BUILD
TRUST.**



FRONT LOADERS



REAR LOADERS



SIDE LOADERS



Available with the Muncie Start®

TITAN® MC1 SERIES

- A medium-duty, clutch shift power take-off replacing the CS24/25 and HS24 Series
- The Titan MC1 power take-off has raised the bar on the life expectancy and durability of truck-mounted PTOs

MAX TORQUE
INTER/CONTINUOUS: 415 lbs.ft. (563 Nm)

MAX HP (@ 1,000 RPM)
INTER/CONTINUOUS: 79 HP (59 kW)

APPROX. WEIGHT 47.2 lbs. (21.4 Kg.)

Muncie Start®: Shift Code SX (12VDC Integral) or Shift Code SR (12VDC Remote Mount)

TRANSMISSION: ALLISON



CS10/11 SERIES

- Direct-mount flanges with ability to rotate allow pump to be positioned for maximum clearance
- PTO can be mounted shaft high or low on either side of the transmission

MAX TORQUE
INTERMITTENT: 500 lbs.ft. (678 Nm)

MAX HP (@ 1,000 RPM)
INTERMITTENT: 95 HP (71 kW)

APPROX. WEIGHT 68 lbs. (30.9 Kg.)

TRANSMISSION: ALLISON

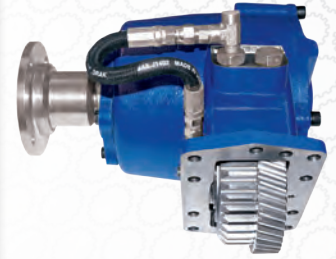
CD40 SERIES

- Designed for maximum output torque with quiet operation for live, engine-driven equipment
- 5 output shaft options with hydraulic pump adapters able to fully rotate

MAX TORQUE
INTERMITTENT: 600 lbs.ft. (813 Nm)

MAX HP (@ 1,000 RPM)
INTERMITTENT: 114 HP (85 kW)

APPROX. WEIGHT 65 lbs. (29.5 Kg.)



TRANSMISSION:

ALLISON

PTO SHAFT EXTENSIONS

- The EX Drive is designed for Allison 3000 and 4000 Series transmissions with a cooler or retarder, allowing for large gear or piston pumps to be direct mounted
- The shaft extension is available for most Allison 3000 and 4000 Series transmissions, making installation easier by moving the hydraulic pump mount to the rear of the transmission

MAX TORQUE
SAME AS "DRIVING"
PTO RATING

MAX HP (@ 1,000 RPM)
SAME AS "DRIVING"
PTO RATING

APPROX. WEIGHT 42 lbs. (19.1 Kg.)

These shaft extensions are compatible with Muncie Power's CS10/11, CS40/41 and TITAN® MC1 power take-offs.



EX Drive

Shaft Extension

MUNCIE START®

The Muncie Start PTO option provides controlled clutch engagement for applications that see high torque demands upon initial startup. The Muncie Start is the ideal solution to eliminate damaging torque spikes through the PTO, truck drivetrain, and mounted auxiliary equipment thereby significantly increasing the life of the entire system.



MLSM SERIES LIVE PAK



- Provides protection against hydraulic overspeed damage while allowing the driver to maintain full use of the hydraulic system on refuse vehicles
- Built-in flow limiter redirects excess pump flow to the reservoir when pump is on

MAX OP. PRESSURE	3,000-2,500 PSI (207-170 BAR)
FLOW RATE (@ 1,000 RPM)*	26.4-44.4 GPM (99.3-168.1 LPM)
DISPLACEMENT	6.10-10.25 cu.in. (102-166 cc.)
APPROX. WEIGHT	103-113 lbs. (46.7-51.2 Kg.)

Note: Maximum temperature is 200°F (93°C) for the non-adjustable pump safety relief valve.

Powr-Pro



POWR-PRO AND POWER-MISER

- Dry valve, air-actuated pump systems designed primarily for refuse vehicles
- Lowers operating costs by reducing horsepower draw in "off" mode, saving fuel
- Powr-Pro utilizes a "butterfly" style valve; Power-Miser utilizes an air actuated, plunger-type dry valve

MAX OP. PRESSURE PL and PM Series:	3,000-2,500 PSI (207-172 BAR)
FLOW RATE (@ 1,000 RPM)* PL and PM Series:	22-5-27.6 GPM (85.2-104.5 LPM)
DISPLACEMENT PL Series: PM Series:	13.8-40.1 cu.in. (52.2-158.8 cc.) 6.10-9.27 cu.in. (100-152 cc.)
APPROX. WEIGHT PL and PM Series:	49-89 lbs. (22.2-40.4 Kg.)



Power-Miser

OPTIMUM X SERIES

- Provides 9 displacements to cover medium to heavy flow, high-pressure requirements
- Bi-rotational, 4-port design is standard with speeds up to 3,000 RPM

MAX OP. PRESSURE	4,350-2,250 PSI (300-155 BAR)
FLOW RATE (@ 1,000 RPM)*	13.8-36.5 GPM (51.2-138.2 LPM)
DISPLACEMENT	3.18-8.43 cu.in. (52.1-138 cc.)
APPROX. WEIGHT	52.9-67.0 lbs. (24.0-30.4 Kg.)



L SERIES

- All cast iron construction with 4 ports and roller bearing design
- Bi-rotational feature helps reduce inventory requirements

MAX OP. PRESSURE	3,000-2,500 PSI (207-172 BAR)
FLOW RATE (@ 1,000 RPM)*	13.8-30.3 GPM (53-114 LPM)
DISPLACEMENT	3.18-7.01 cu.in. (52.1-114.9 cc.)
APPROX. WEIGHT	30.9-51.0 lbs. (18.1-23.2 Kg.)

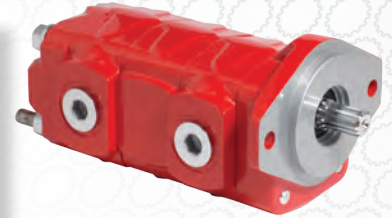


* Flow rates are theoretical.

PKS1 SERIES TANDEM

- All cast iron construction with 4 ports and roller bearing design
- Designed to meet the application needs of either a pump or a motor

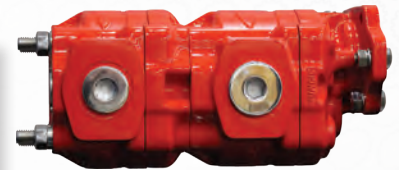
MAX OP. PRESSURE	3,000-2,500 PSI (207-172 BAR)
FLOW RATE (@ 1,000 RPM)*	4.2-17.1 GPM (15-64 LPM)
DISPLACEMENT	0.98-3.94 cu.in. (16.1-64.6 cc.)
APPROX. WEIGHT	26.5-34.1 lbs. (12.1-15.5 Kg.)



OPTIMUM X SERIES TANDEM/TRIPLE

- Provides 9 displacements to cover medium to heavy flow, high-pressure requirements
- Bi-rotational, 4-port design is standard with speeds up to 3,000 RPM

MAX OP. PRESSURE	4,350-2,250 PSI (300-155 BAR)
FLOW RATE (@ 1,000 RPM)*	13.8-36.5 GPM (51.2-138.2 LPM)
DISPLACEMENT	3.18-8.43 cu.in. (52.1-138 cc.)
APPROX. WEIGHT	52.9-67.0 lbs. (24.0-30.4 Kg.)

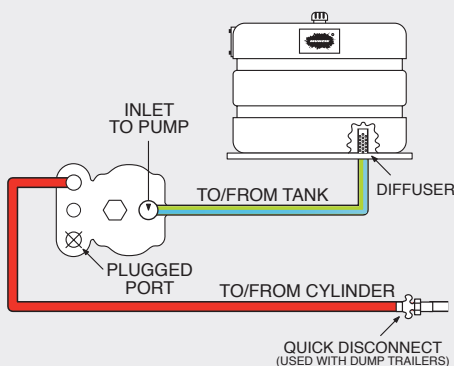


* Flow rates are theoretical. ** Flow rate per outlet.

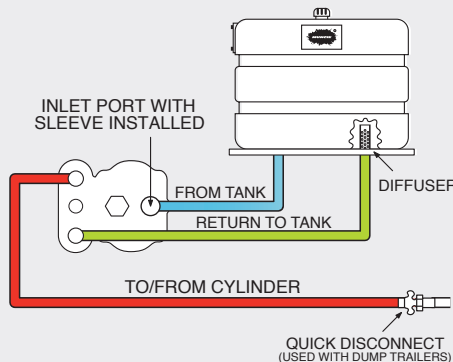
3-LINE SYSTEMS

Many dump bodies function quite adequately with a 2-line system if not left operating too long in neutral. When left operating too long in neutral however, the most common dump pump failure occurs from high temperatures as a result. A 3-line system helps prevent this failure with a separate line to return hydraulic oil from the cylinder directly to the reservoir instead of forcing its way back through the inlet line.

2-LINE INSTALLATION

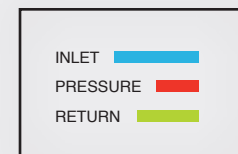


3-LINE INSTALLATION



WHY CHOOSE A 3-LINE INSTALLATION?

- Allows faster down cycles
- Provides an easier method of filtering the hydraulic oil
- Ultimately runs cooler



IF OIL SPRAY FORMS AROUND THE BREATHER CAP ON A 3-LINE SYSTEM, THE TANK LINES MAY BE REVERSED.

Z SERIES



Z28 Roller Bearing Design



Z40 Bushing Design



Z Series Tandem

- Pump assemblies custom built for replacement or new installation requirements
- Cast iron construction available in both roller bearing and bushing designs with a wide variety of displacements within each product family
- Industry-standard shafts and port options are available
- They are available in single and multiple section configurations

MAX OP. PRESSURE

Roller Bearing: 3,000-2,500 PSI (207-172 BAR)
 Bushing Series: 3,500-900 PSI (241-62 BAR)

FLOW RATE (@ 1,000 RPM)*

Roller Bearing: 4.3-53.2 GPM (18.3-201.4 LPM)**
 Bushing Series: 2.0-39.0 GPM (7.6-147.6 LPM)**

DISPLACEMENT

Roller Bearing: 0.99-12.30 cu.in. (16.2-201.6 cc.)
 Bushing Series: 0.47-9.00 cu.in. (7.7-147.5 cc.)

APPROX. WEIGHT

Roller Bearing - Single: 31-92 lbs. (14.1-47.73 Kg.)
 Roller Bearing - Tandem: 25-79 lbs. (13.2-35.8 Kg.)
 Bushing Series - Single: 15.5-71 lbs. (7.0-32.2 Kg.)
 Bushing Series - Tandem: 15.5-72 lbs. (7.0-32.7 Kg.)

* Flow rates are theoretical. ** Flow rate per outlet.

V130 SERIES



- Internal, oil-core design allows for higher flow rates and low pressure drops in a compact package
- Tight tolerances and precision machining keep internal, spool leakages low

FLOW RATE

Nominal: 34 GPM (130 LPM)
 Maximum: 55 GPM (208 LPM)

MAX PRESSURE

1-3 Sections: 5,440 PSI (375 BAR)
 4-6 Sections: 5,075 PSI (350 BAR)
 7-10 Sections: 4,710 PSI (325 BAR)

MAX BACK PRESSURE

365 PSI (25 BAR)

V250 SERIES



- Built to withstand extreme applications with high-pressure capabilities and high flow rates
- Work-port, relief valves; anti-cavitation valves, combination relief/anti-cavitation valves and pilot-operated relief valves available

FLOW RATE

Nominal: 67 GPM (250 LPM)
 Maximum: 75 GPM (280 LPM)

MAX PRESSURE

4,000 PSI (275 BAR)

MAX BACK PRESSURE

290 PSI (20 BAR)

L125 SECTIONAL LOAD SENSE

- Closed-centered, post-compensated with flow sharing sections that have local compensators, creating an efficient hydraulic control valve
- Offers both manual and electrohydraulic control options

FLOW RATE	
Nominal:	33 GPM (125 LPM)
Maximum:	
Inlet:	40 GPM (150 LPM)
Work Section:	26 GPM (100 LPM)
MAX PRESSURE	5,075 PSI (350 BAR)
STAND BY PRESSURE	200 PSI (14 BAR)
MAX BACK PRESSURE	145 PSI (10 BAR)



* L275 Control Valve available soon

METAL ROUND

- Designed for hardworking, continuous-duty applications
- Available in aluminum for lighter weight or steel for higher heat applications
- Offered in a wide variety of sizes

VOLUMES	
Aluminum (5 sizes):	25-100 gal. (94.6-1,432.9 L)
Steel (5 sizes):	25-100 gal. (94.6-1,432.9 L)
DIMENSIONS	
Aluminum:	24 in. dia. x 15 in.-51 in. Long
Steel:	24 in. dia. x 15 in.-51 in. Long
APPROX. WEIGHT	
Aluminum:	73-180 lbs. (33.1-81.7 Kg.)
Steel:	101-226 lbs. (45.8-102.5 Kg.)



STEEL BOX

- Offered in a large variety of sizes from compact to mid-size
- Features multiple return ports, optional tank-top filter and sensors
- Designed for continuous-duty applications that generate significant amounts of heat

VOLUMES	
Available (7 sizes):	7-40 gal. (26.5-151.4 L)
DIMENSIONS	Varies
APPROX. WEIGHT	40-126 lbs. (18.1-57.2 Kg.)



HYPRESS R17



- Specification: SAE 100R17
- Special Features/Approvals: ABS Approval; MSHA Approved Outer Cover
- Fittings: One-piece G Series

MAX WORKING PRESSURE	3,045 PSI (210 BAR) in all sizes (Isobaric hose line)
REINFORCEMENT TYPE	1 High-tensile Steel Wire Braid in sizes -04 through -08 (¼"-½") 2 High-tensile Steel Wire Braids in sizes -10 through -16 (⅝"-1")
OPERATING TEMPS	-40°F to +248°F (-40°C to +120°C) Continuous
AVAILABLE SIZES	-04 through -16 (¼"-1")

HY-VACUUM R4



- Specification: SAE 100R4
- Special Features/Approvals: for use in inlet and suction applications where vacuum is present

MAX WORKING PRESSURE	58–305 PSI (4-21 BAR)
REINFORCEMENT TYPE	2 Textile Braids + 1 Steel Helical Wire
OPERATING TEMPS	-40°F to +212°F (-40°C to +100°C) Continuous
AVAILABLE SIZES	-12 through -48 (¾"-3")

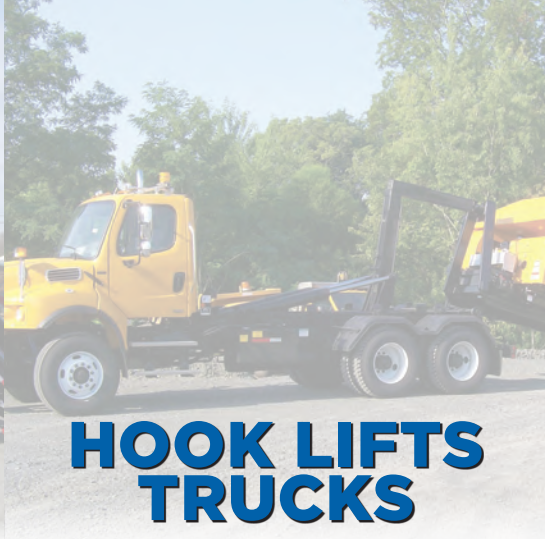
HYDRAULIC OIL FILTERS

Reduce contamination related failures and equipment downtime with Muncie Power Products' hydraulic filters, available in both nominal and absolute filtration.





ROLL-OFFS



HOOK LIFTS TRUCKS



LIVE FLOOR TRAILERS

TG SERIES

- Versatile PTO with 10 speed ratios for all popular transmissions
- Lightweight, reduced noise and superior heat dissipation

MAX TORQUE INTERMITTENT:	285 lbs.ft. (386 Nm)
MAX HP (@ 1,000 RPM) INTERMITTENT:	54 HP (40 kW)
APPROX. WEIGHT	22 lbs. (10.0 Kg.)



TRANSMISSIONS:

AISIN, ALLISON, EATON FULLER, MACK

CS6/8 SERIES

- Designed for Allison 1000 and 2000 Series automatic transmissions as well as many current manual transmissions offering direct-mount pump options
- Patented, Muncie Power drag break prevents shaft rotation in "off" mode
- Direct-mount flanges with ability to rotate allow the pump to be positioned for maximum clearance

MAX TORQUE INTERMITTENT:	300 lbs.ft. (407 Nm)
MAX HP (@ 1,000 RPM) INTERMITTENT:	57 HP (43 kW)
APPROX. WEIGHT	47-49 lbs. (21.3-22.2 Kg.)



TRANSMISSIONS:

AISIN, ALLISON, EATON FULLER, MACK

PTO SHAFT EXTENSIONS

- The EX Drive is designed for Allison 3000 and 4000 Series transmissions with a cooler or retarder, allowing for large gear or piston pumps to be direct mounted
- The shaft extension is available for most Allison 3000 and 4000 Series transmissions, making installation easier by moving the hydraulic pump mount to the rear of the transmission

MAX TORQUE
SAME AS "DRIVING"
PTO RATING

MAX HP (@ 1,000 RPM)
SAME AS "DRIVING"
PTO RATING

APPROX. WEIGHT 42 lbs. (19.1 Kg.)

These shaft extensions are compatible with Muncie Power's CS10/11, CS40/41 and TITAN® MC1 power take-offs.





TITAN® MC1 SERIES

- A medium-duty, clutch shift power take-off replacing the CS24/25 and HS24 Series
- The Titan MC1 power take-off has raised the bar on the life expectancy and durability of truck-mounted PTOs

MAX TORQUE

INTER/CONTINUOUS: 415 lbs.ft. (563 Nm)

MAX HP (@ 1,000 RPM)

INTER/CONTINUOUS: 79 HP (59 kW)

APPROX. WEIGHT

47.2 lbs. (21.4 Kg.)

Available with the Muncie Start®

Muncie Start®: Shift Code SX (12VDC Integral) or Shift Code SR (12VDC Remote Mount)

TRANSMISSION:

ALLISON



MUNCIE START®

The Muncie Start PTO option provides controlled clutch engagement for applications that see high torque demands upon initial startup. The Muncie Start is the ideal solution to eliminate damaging torque spikes through the PTO, truck drivetrain, and mounted auxiliary equipment thereby significantly increasing the life of the entire system.



Z28 Roller Bearing Design



Z40 Bushing Design



Z Series Tandem

Z SERIES

- Pump assemblies custom built for replacement or new installation requirements
- Cast iron construction available in both roller bearing and bushing designs with a wide variety of displacements within each product family
- Industry-standard shafts and port options are available

MAX OP. PRESSURE

Roller Bearing: 3,000-2,500 PSI (207-172 BAR)
Bushing Series: 3,500-900 PSI (241-62 BAR)

FLOW RATE (@ 1,000 RPM)*

Roller Bearing: 4.3-53.2 GPM (18.3-201.4 LPM)**
Bushing Series: 2.0-39.0 GPM (7.6-147.6 LPM)**

DISPLACEMENT

Roller Bearing: 0.99-12.30 cu.in. (16.2-201.6 cc.)
Bushing Series: 0.47-9.00 cu.in. (7.7-147.5 cc.)

APPROX. WEIGHT

Roller Bearing - Single: 31-92 lbs. (14.1-47.73 Kg.)
Roller Bearing - Tandem: 25-79 lbs. (13.2-35.8 Kg.)
Bushing Series - Single: 15.5-71 lbs. (7.0-32.2 Kg.)
Bushing Series - Tandem: 15.5-72 lbs. (7.0-32.7 Kg.)

* Flow rates are theoretical. ** Flow rate per outlet.

OPTIMUM W SERIES

- Provides 8 displacements to cover lower flow rates, higher pressure requirements
- Bi-rotational, 4-port design is standard with speeds up to 3,600 RPM

MAX OP. PRESSURE	4,350-3,000 PSI (300-210 BAR)
FLOW RATE (@ 1,000 RPM)*	6.3-25.4 GPM (23.9-96.2 LPM)
DISPLACEMENT	1.45-4.87 cu.in. (23.9-79.8 cc.)
APPROX. WEIGHT	40.8-50.7 lbs. (18.5-23.0 Kg.)



OPTIMUM X SERIES

- Provides 9 displacements to cover medium to heavy flow, high-pressure requirements
- Bi-rotational, 4-port design is standard with speeds up to 3,000 RPM

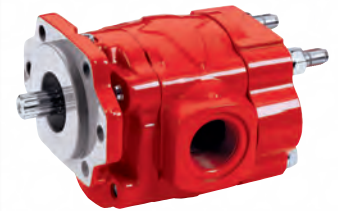
MAX OP. PRESSURE	4,350-2,250 PSI (300-155 BAR)
FLOW RATE (@ 1,000 RPM)*	13.8-36.5 GPM (51.2-138.2 LPM)
DISPLACEMENT	3.18-8.43 cu.in. (52.1-138 cc.)
APPROX. WEIGHT	52.9-67.0 lbs. (24.0-30.4 Kg.)



L SERIES

- All cast iron construction with 4 ports and roller bearing design
- Bi-rotational feature helps reduce inventory requirements

MAX OP. PRESSURE	3,000-2,500 PSI (207-172 BAR)
FLOW RATE (@ 1,000 RPM)*	13.8-30.3 GPM (53-114 LPM)
DISPLACEMENT	3.18-7.01 cu.in. (52.1-114.9 cc.)
APPROX. WEIGHT	30.9-51.0 lbs. (18.1-23.2 Kg.)



T SERIES

- A bent-axis piston pump with speed capabilities of up to 2,100 RPM
- Double shaft seals with 4 standard sizes

MAX OP. PRESSURE	6,525-5,075 PSI (450-350 BAR)
FLOW RATE (@ 1,000 RPM)*	12.4-28.5 GPM (46.9-107.9 LPM)
DISPLACEMENT	2.87-6.59 cu.in. (47-108 cc.)
APPROX. WEIGHT	23.1-29.8 lbs. (10.5-13.5 Kg.)



* Flow rates are theoretical.



V050 SERIES

- Small size, lightweight valve with versatile design configurations
- Available with 7, standard back-cap options and 5, standard control options

FLOW RATE	
Nominal:	13 GPM (50 LPM)
Maximum:	16 GPM (60 LPM)
MAX PRESSURE	
1-3 Sections:	5,440 PSI (375 BAR)
4-6 Sections:	5,075 PSI (350 BAR)
7-10 Sections:	4,710 PSI (325 BAR)
MAX BACK PRESSURE	365 PSI (25 BAR)



V080 SERIES

- Constructed with high-grade iron castings and nickel-plated spools for use in high-pressure applications
- Load checks and inlet relief valve are standard

FLOW RATE	
Nominal:	21 GPM (80 LPM)
Maximum:	30 GPM (114 LPM)
MAX PRESSURE	
1-3 Sections:	5,075 PSI (350 BAR)
4-6 Sections:	4,650 PSI (320 BAR)
7-10 Sections:	4,350 PSI (300 BAR)
MAX BACK PRESSURE	365 PSI (25 BAR)



V130 SERIES

- Internal, oil-core design allows for higher flow rates and low pressure drops in a compact package
- Tight tolerances and precision machining keep internal, spool leakages low

FLOW RATE	
Nominal:	34 GPM (130 LPM)
Maximum:	55 GPM (208 LPM)
MAX PRESSURE	
1-3 Sections:	5,440 PSI (375 BAR)
4-6 Sections:	5,075 PSI (350 BAR)
7-10 Sections:	4,710 PSI (325 BAR)
MAX BACK PRESSURE	365 PSI (25 BAR)



V250 SERIES

- Built to withstand extreme applications with high-pressure capabilities and high flow rates
- Work-port, relief valves; anti-cavitation valves, combination relief/anti-cavitation valves and pilot-operated relief valves available

FLOW RATE	
Nominal:	67 GPM (250 LPM)
Maximum:	75 GPM (280 LPM)
MAX PRESSURE	4,000 PSI (275 BAR)
MAX BACK PRESSURE	290 PSI (20 BAR)

L125 SECTIONAL LOAD SENSE

- Closed-centered, post compensated with flow sharing sections that have local compensators, creating an efficient hydraulic control valve
- Offers both manual and electrohydraulic control options

FLOW RATE	
Nominal:	33 GPM (125 LPM)
Maximum:	
Inlet:	40 GPM (150 LPM)
Work Section:	26 GPM (100 LPM)
MAX PRESSURE	
	5,075 PSI (350 BAR)
STAND BY PRESSURE	
	200 PSI (14 BAR)
MAX BACK PRESSURE	
	145 PSI (10 BAR)



* L275 Control Valve available soon

METAL ROUND

- Designed for hardworking, continuous-duty applications
- Available in aluminum for lighter weight or steel for higher heat applications
- Offered in a wide variety of sizes

VOLUMES	
Aluminum (5 sizes):	25-100 gal. (94.6-1,432.9 L)
Steel (5 sizes):	25-100 gal. (94.6-1,432.9 L)
DIMENSIONS	
Aluminum:	24 in. dia. x 15 in.-51 in. Long
Steel:	24 in. dia. x 15 in.-51 in. Long
APPROX. WEIGHT	
Aluminum:	73-180 lbs. (33.1-81.7 Kg.)
Steel:	101-226 lbs. (45.8-102.5 Kg.)



METAL UPRIGHT

- Designed for hardworking, continuous-duty applications
- Available in aluminum for lighter weight or steel for higher heat applications
- Easy installation and accessibility

VOLUMES	
Aluminum (3 sizes):	50-100 gal. (189.3-1,432.9 L)
Steel (4 sizes):	50-100 gal. (189.3-1,432.9 L)
DIMENSIONS	
Aluminum:	Varies
Steel:	Varies
APPROX. WEIGHT	
Aluminum:	77-130 lbs. (34.9-59.0 Kg.)
Steel:	150-248 lbs. (68.0-128.8 Kg.)



STEEL BOX

- Offered in a large variety of sizes from compact to mid-size
- Features multiple return ports, optional tank-top filter and sensors
- Designed for continuous-duty applications that generate significant amounts of heat

VOLUMES	
Available (7 sizes):	7-40 gal. (26.5-151.4 L)
DIMENSIONS	
	Varies
APPROX. WEIGHT	
	40-126 lbs. (18.1-57.2 Kg.)



POLYETHYLENE BOX



- Requires only 2, metal straps and saddles for easy installation on the chassis frame rail
- Preferred in intermittent-duty applications where heat buildup is not an issue, but accessibility is required

VOLUMES Available (3 sizes):	35-50 gal. (135.6-189.3 L)
DIMENSIONS	Varies
APPROX. WEIGHT	27-55 lbs. (12.3-35.0 Kg.)

POLYETHYLENE UPRIGHT



- Upright design reduces weight, eliminates risk of contamination from corrosion, improves longevity and makes for quickest and easiest installation
- Lightweight for short-duty applications where heat buildup is not an issue

VOLUMES Available (2 sizes):	50-75 gal. (189.3-283.9 L)
DIMENSIONS	Varies
APPROX. WEIGHT	67 lbs. (30.4 Kg.)

ASC2 SERIES



- LED PTO indicator light for easy dash mounting
- Push-to-connect air fittings allow easy installation for the air controller (standard in valve and air installation kit)
- Consoles have a black powder coat finish
- Some models of consoles provide a large mounting surface for extra switches, lights, valves and more
- Symmetrical design of consoles on most models provides for installation on either side of the driver's seat with options for angle mount on the floor or dash

AIR VALVES	Automatic Manual Kick Out, Lower Position
PTO PUMP CONTROL Available (6 styles):	Auto KO, Center Detent Man KO, Center Detent Auto KO, Center & Lower Detent Man KO, Center & Lower Detent Auto KO, 3 Pos. Detent Man KO, 3 Pos. Detent
CONSOLES Width x Length x Height Available (6 styles):	3 in. x 3 in. x 4 in. Square 3 in. x 3 in. x 8 in. Square 3 in. x 3 in. x 13 in. Square 3 in. x 10 in. x 4 in. Rectangular 3 in. x 10 in. x 8 in. Rectangular 3 in. x 10 in. x 13 in. Rectangular 5 in. x 5 in. x 12 in. Sq., Cent. Faceplate 5 in. x 5 in. x 12 in. Sq., Offset Faceplate Angle Mount No Console (Dash Mount)

COMBO KIT II SERIES

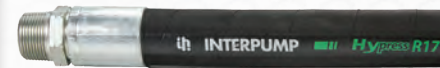
- Heavy-duty gear pump rated for long or continuous-duty cycles
- High-capacity directional valve provides faster cycle times for dump applications
- Dual-position pressure relief valve system provides protection for both applications
- Reservoir-mounted directional valve simplifies installation



HYPRESS R17

- Specification: SAE 100R17
- Special Features/Approvals: ABS Approval; MSHA Approved Outer Cover
- Fittings: One-piece G Series

MAX WORKING PRESSURE	3,045 PSI (210 BAR) in all sizes (Isobaric hose line)
REINFORCEMENT TYPE	1 High-tensile Steel Wire Braid in sizes -04 through -08 (¼"-½") 2 High-tensile Steel Wire Braids in sizes -10 through -16 (¾"-1")
OPERATING TEMPS	-40°F to +248°F (-40°C to +120°C) Continuous
AVAILABLE SIZES	-04 through -16 (¼"-1")



HY-VACUUM R4

- Specification: SAE 100R4
- Special Features/Approvals: for use in inlet and suction applications where vacuum is present

MAX WORKING PRESSURE	58-305 PSI (4-21 BAR)
REINFORCEMENT TYPE	2 Textile Braids + 1 Steel Helical Wire
OPERATING TEMPS	-40°F to +212°F (-40°C to +100°C) Continuous
AVAILABLE SIZES	-12 through -48 (¾"-3")



HYDRAULIC OIL FILTERS

Reduce contamination related failures and equipment downtime with Muncie Power Products' hydraulic filters, available in both nominal and absolute filtration.



SCOUT TRUCKS

TG SERIES



- Versatile PTO with 10 speed ratios for all popular transmissions
- Lightweight, reduced noise and superior heat dissipation

MAX TORQUE
INTERMITTENT: 285 lbs.ft. (386 Nm)

MAX HP (@ 1,000 RPM)
INTERMITTENT: 54 HP (40 kW)

APPROX. WEIGHT 22 lbs. (10.0 Kg.)

TRANSMISSIONS:

AISIN, ALLISON, EATON FULLER, MACK

CS6/8 SERIES



- Designed for Allison 1000 and 2000 Series automatic transmissions as well as many current manual transmissions offering direct-mount pump options
- Patented, Muncie Power drag break prevents shaft rotation in "off" mode
- Direct-mount flanges with ability to rotate allow the pump to be positioned for maximum clearance

MAX TORQUE
INTERMITTENT: 300 lbs.ft. (407 Nm)

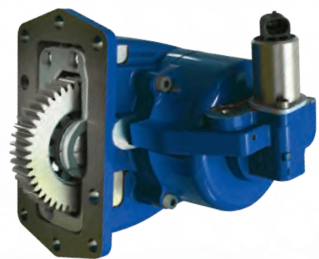
MAX HP (@ 1,000 RPM)
INTERMITTENT: 57 HP (43 kW)

APPROX. WEIGHT 47-49 lbs. (21.3-22.2 Kg.)

TRANSMISSIONS:

AISIN, ALLISON, EATON FULLER, MACK

F20 SERIES



- 10-bolt clutch shift PTO
- Designed for the Ford Super Duty trucks F-250-F-600, with the Ford 10R140 transmission
- Features patent-pending noise abatement technology
- Solenoid activated

MAX TORQUE
INTERMITTENT: 261 lbs.ft. (353 Nm)

MAX HP (@ 1,000 RPM)
INTERMITTENT: 50 HP (37 kW)

APPROX. WEIGHT 29 lbs. (13.2 Kg.)

Muncie Start®: Shift Code GS (Gas Engine) or Shift Code DS (Diesel Engine)

TRANSMISSIONS:

FORD 10R140

Available with the Muncie Start®

FR6Q SERIES

- Fits Ford Super Duty trucks with Ford 6R140 transmission, primarily F-350-550 (may also be used on F-650/F-750)
- Noise abatement mechanism eliminates virtually all gear rattle noise

MAX TORQUE
INTERMITTENT: 200 lbs.ft. (271 Nm)

MAX HP (@ 1,000 RPM)
INTERMITTENT: 39 HP (29 kW)

APPROX. WEIGHT 35 lbs. (15.9 Kg.)

Muncie Start®: Special Feature option 6 (Stationary or Mobile) or Special Feature option 7 (Stationary and Mobile, only available on 6, F, and D shift types)

TRANSMISSION: FORD 6R140



Available with the Muncie Start®

MUNCIE START®

The Muncie Start PTO option provides controlled clutch engagement for applications that see high torque demands upon initial startup. The Muncie Start is the ideal solution to eliminate damaging torque spikes through the PTO, truck drivetrain, and mounted auxiliary equipment thereby significantly increasing the life of the entire system.



F SERIES

- 11 pump sizes available to fit a wide variety of applications
- Pressure-balanced bushing blocks and sleeve bearings provide long life and high performance

MAX OP. PRESSURE 3,625-2,320 PSI (250-160 BAR)

FLOW RATE (@ 1,000 RPM)* 1.60-8.70 GPM (6.06-33.0 LPM)

DISPLACEMENT 0.37-2.01 cu.in. (06-33 cc.)

APPROX. WEIGHT 7.69-10.01 lbs. (3.4-4.5 Kg.)



K SERIES

- All cast iron construction with 4 ports and roller bearing design
- Designed to meet the application needs of either a pump or a motor

MAX OP. PRESSURE 3,000-2,500 PSI (207-172 BAR)

FLOW RATE (@ 1,000 RPM)* 4.2-17.1 GPM (15-64 LPM)

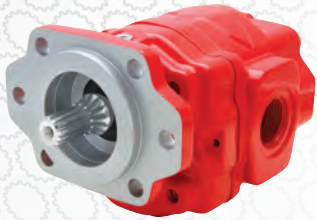
DISPLACEMENT 0.98-3.94 cu.in. (16.1-64.6 cc.)

APPROX. WEIGHT 26.5-34.1 lbs. (12.1-15.5 Kg.)



* Flow rates are theoretical.

OPTIMUM W SERIES



- Provides 8 displacements to cover lower flow rates, higher pressure requirements
- Bi-rotational, 4-port design is standard with speeds up to 3,600 RPM

MAX OP. PRESSURE	4,350-3,000 PSI (300-210 BAR)
FLOW RATE (@ 1,000 RPM)*	6.3-25.4 GPM (23.9-96.2 LPM)
DISPLACEMENT	1.45-4.87 cu.in. (23.9-79.8 cc.)
APPROX. WEIGHT	40.8-50.7 lbs. (18.5-23.0 Kg.)

H/K SERIES



- Porting available on both the side and rear for tight-fitting chassis hookups
- Pressure-balanced wear plates provide high system efficiency for lower horsepower needs

MAX OP. PRESSURE	3,500-2,000 PSI (241-138 BAR)
FLOW RATE (@ 1,000 RPM)*	2.7-12.8 GPM (10.2-48.5 LPM)
DISPLACEMENT	0.62-2.96 cu.in. (10.2-48.5 cc.)
APPROX. WEIGHT	34-56 lbs. (15.4-25.4 Kg.)

* Flow rates are theoretical.

VO80 SERIES



- Constructed with high-grade iron castings and nickel-plated spools for use in high-pressure applications
- Load checks and inlet relief valve are standard

FLOW RATE	
Nominal:	21 GPM (80 LPM)
Maximum:	30 GPM (114 LPM)
MAX PRESSURE	
1-3 Sections:	5,075 PSI (350 BAR)
4-6 Sections:	4,650 PSI (320 BAR)
7-10 Sections:	4,350 PSI (300 BAR)
MAX BACK PRESSURE	365 PSI (25 BAR)

STEEL BOX



- Offered in a large variety of sizes from compact to mid-size
- Features multiple return ports, optional tank-top filter and sensors
- Designed for continuous-duty applications that generate significant amounts of heat

VOLUMES	
Available (7 sizes):	7-40 gal. (26.5-151.4 L)
DIMENSIONS	Varies
APPROX. WEIGHT	40-126 lbs. (18.1-57.2 Kg.)

HYPRESS R17

- Specification: SAE 100R17
- Special Features/Approvals: ABS Approval; MSHA Approved Outer Cover
- Fittings: One-piece G Series

MAX WORKING PRESSURE	3,045 PSI (210 BAR) in all sizes (Isobaric hose line)
REINFORCEMENT TYPE	1 High-tensile Steel Wire Braid in sizes -04 through -08 (¼"-½") 2 High-tensile Steel Wire Braids in sizes -10 through -16 (⅝"-1")
OPERATING TEMPS	-40°F to +248°F (-40°C to +120°C) Continuous
AVAILABLE SIZES	-04 through -16 (¼"-1")



HY-VACUUM R4

- Specification: SAE 100R4
- Special Features/Approvals: for use in inlet and suction applications where vacuum is present

MAX WORKING PRESSURE	58-305 PSI (4-21 BAR)
REINFORCEMENT TYPE	2 Textile Braids + 1 Steel Helical Wire
OPERATING TEMPS	-40°F to +212°F (-40°C to +100°C) Continuous
AVAILABLE SIZES	-12 through -48 (¾"-3")



DC POWER PACKS

Designed for reliable, quality performance, Muncie Power Products' DC power packs feature motors available in 12 VDC and 24 VDC. Used for numerous applications including dump bodies, snow plows, single-acting cylinders and lift gates, Muncie Power's DC power packs are available with custom or standard circuits.







With many years of combined experience, Muncie Power's team offers industry-leading customer service for its full line of products from power take-offs to hydraulic components.

Indiana

*Corporate Headquarters
Warehouse Distribution Center*
Toll Free: 800-367-7867

California

Muncie Distribution Center
Phone 559-651-1401

Georgia

Warehouse and Distribution Center
Phone: 770-499-1847

Ohio

Mobile Power Center
Phone: 614-552-0318

Oklahoma

Manufacturing Division and Distribution Center
Phone: 918-838-0900

Pennsylvania

Mobile Power Center
Phone: 610-539-4430

Texas

Muncie Distribution Center
Phone: 713-674-5289

Virginia

Muncie Distribution Center
Phone: 804-275-6724



**Muncie[®]
Power
Products**

A Member of the Interpump Group

www.munciepower.com