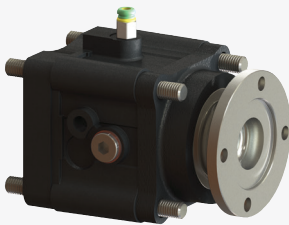


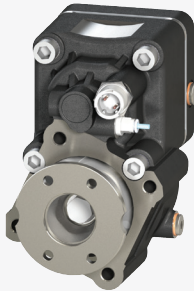
# POWER TAKE-OFFS FOR VOLVO I-SHIFT



## RS4S P81

- Mechanically shifted thru-shaft PTO
- Driveline applications only
- Perfect for blower and vacuum pump applications

<b>MAX TORQUE</b>	442 lbs.ft. (599 Nm)
<b>MAX HP (@ 1,000 RPM)</b>	84 HP (62 kW)
<b>MODEL CONFIGURATIONS</b>	RS4S-P81V8-P1CX for 1310 Companion Flange Output



## RS4S P86

- Mechanically shifted two gear PTO
- Provides clearance for direct mount pumps
- Available in multiple output ratios
- Perfect for end dump and other direct mount pump applications

<b>MAX TORQUE</b>	369 lbs.ft. (500 Nm)
<b>MAX HP (@ 1,000 RPM)</b>	70 HP (52 kW)
<b>MODEL CONFIGURATIONS</b>	RS4S-P86V*-P1CX for 1310 Companion Flange Output RS4S-P86V*-P1IX for DIN 5462-Spline Pump Mount RS4S-P86V*-P1KX for SAE "B" 7/8"-13T Spline Pump mount



## RS4S P93

- Mechanically shifted dual output PTO
- Outputs can be shifted independently
- Perfect for any application requiring multiple PTOs

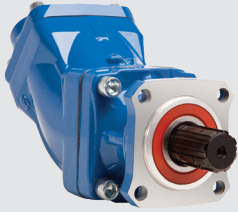
<b>MAX TORQUE</b>	368 lbs.ft. (499 Nm)
<b>MAX HP (@ 1,000 RPM)</b>	70 HP (52 kW)
<b>MODEL CONFIGURATIONS</b>	RS4S-P93VN-P1CX for 1310 Companion Flange RS4S-P93VN-P1IX for DIN 5462-Spline Pump Mount RS4S-P93VN-P1KX for SAE "B" 7/8"-13T Spline Pump mount



# DIN AND SAE OPTIONS AVAILABLE

## DIN OUTPUT OPTIONS

### T SERIES Bent-axis Piston Pump



The T Series is designed for higher operating pressures than traditional gear pumps. Its rugged design allows for high performance and extra-long life.

#### Model Numbers:

- PT2-047-20NBRR
- PT2-064-20NBRR
- PT2-084-20NBRR
- PT2-108-20NBRR

**MAX OP. PRESSURE** 6,525-5,075 PSI (450-350 BAR)

**FLOW RATE (@ 1,000 RPM)\*** 12.4-28.5 GPM (46.9-107.9 LPM)

\* Flow rates are theoretical.

## SAE MOUNT OPTIONS

### E SERIES Dump Pump



Designed for dump applications and feature direct mount options.

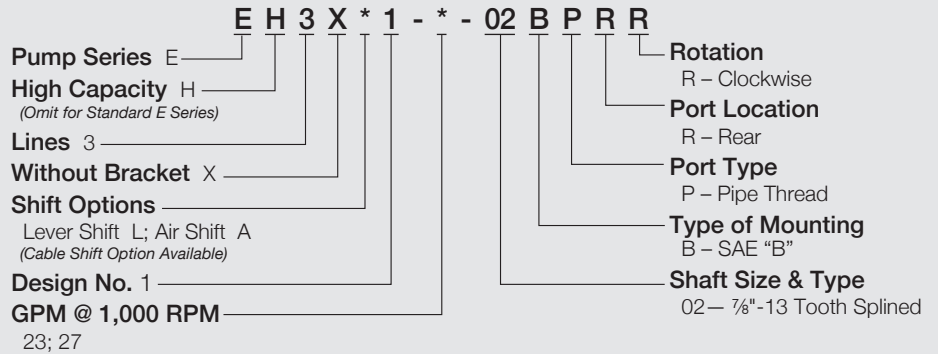
**MAX OP. PRESSURE** 2,500 PSI (173 BAR)

E & EH Series:

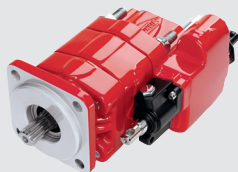
**FLOW RATE (@ 1,000 RPM)\***

E Series: 22-5-27.6 GPM (85.2-104.5 LPM)  
EH Series: 21.4-28.6 GPM (81.0-108.3 LPM)

### MODEL CONFIGURATION



### S SERIES Hoist Pump



Designed for use on small single- or tandem-axle dump trucks.

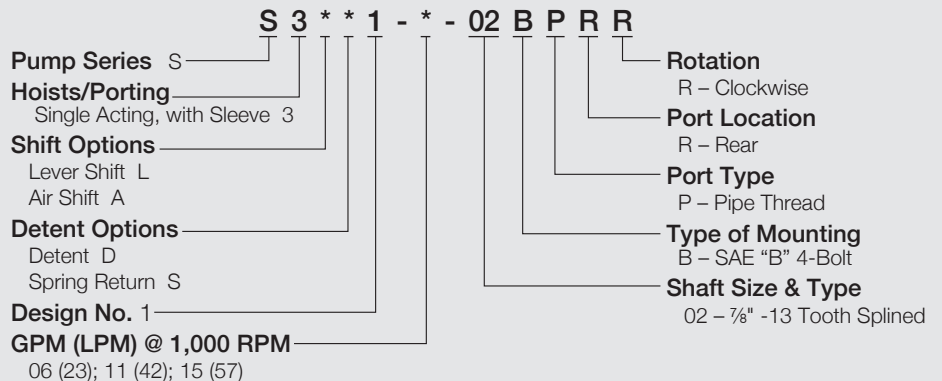
**MAX OP. PRESSURE** 3,000-2,500 PSI (207-172 BAR)\*\*

**FLOW RATE (@ 1,000 RPM)\*** 6.4-17.16 GPM (24.2-65.0 LPM)

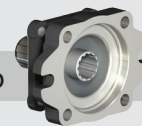
\* Flow rates are theoretical.

\*\* Requires high pressure relief PS1-1231VH for settings above 2,500 PSI.

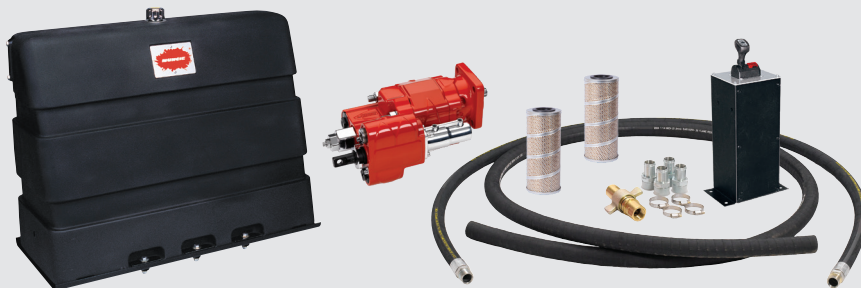
### MODEL CONFIGURATION



### DIN TO SAE B Mount Kit Adapter P/N: 606X80A0000



## WET LINE KIT HYDRAULIC SYSTEM



Muncie Power has been supplying complete systems for end dump applications for five decades. All systems include the dump pump, control console and reservoir. Naturally, Muncie Power has the right power take-off as well as hoses and fittings to complete the installation.

- Reservoirs
- Hose kits
- Consoles
- Filters



A Member of the Interpump Group  
MI18-03 (Rev. 03-20)

201 East Jackson Street • Muncie, Indiana 47305  
800-367-7867 • Fax 765-284-6991 • info@munciepower.com • www.munciepower.com  
Specifications are subject to change without notice. Visit www.munciepower.com for warranties and literature. All rights reserved. © Muncie Power Products, Inc. (2018)