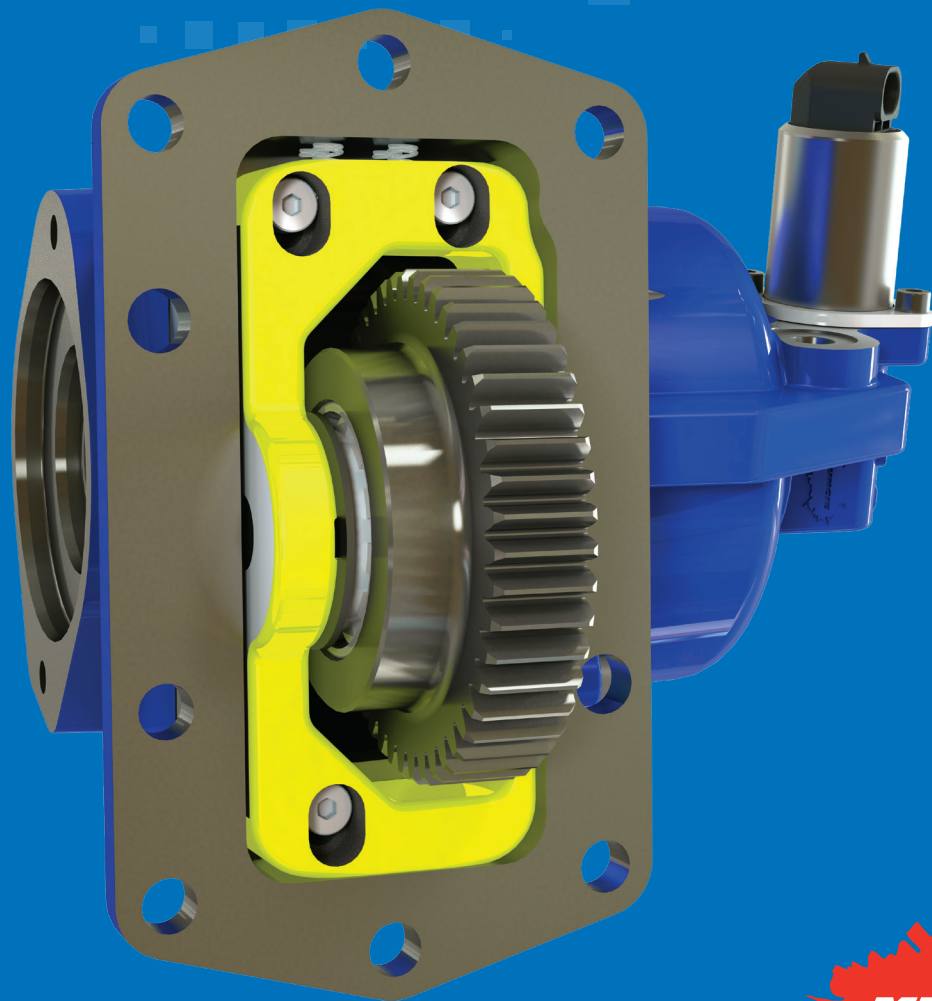


INTRODUCING THE **F20 PTO** FOR FORD'S NEW 10-SPEED TRANSMISSION

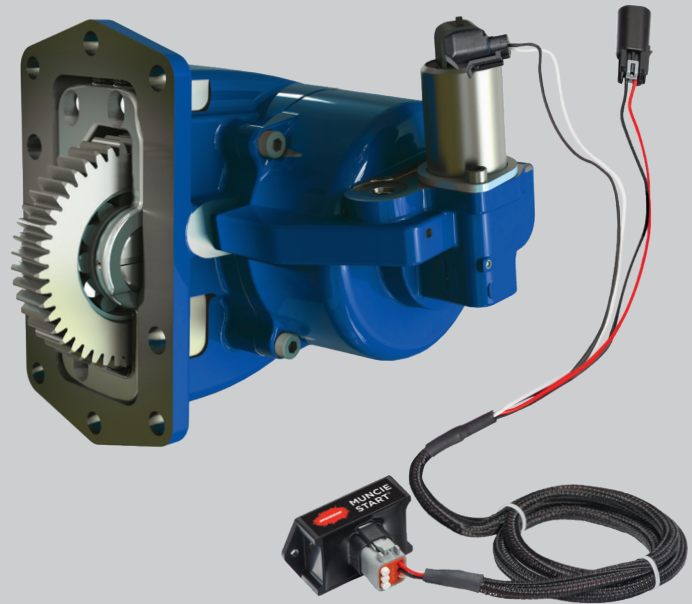


F20
SERIES

MUNCIE

KEY FEATURES FOR F20 SERIES PTO

- 10-bolt clutch shift PTO
- Designed for Ford Super Duty trucks F-250–F-600, with the Ford TorqShift® 10R140 transmission
- Solenoid activated
- Patent-pending noise abatement technology
- Available with direct mount and round shaft output options
- Pre-configured wiring harness



Max Torque

261 lbs.ft.
(354 Nm)

Max HP (@ 1,000 RPM)

50 HP (37 kW)

Target Markets

- Tow and recovery
- Dump
- Refuse
- Utility
- Snow and ice

Muncie Start®: Shift Code GS (Gas Engine) or Shift Code DS (Diesel Engine)

THE PTO SOLUTION FOR FORD

munciepower.com/F20

