

HIGH EFFICIENCY MOTORS FOR **BULK FEED APPLICATIONS**



MJ200/MJ475 LSHT MOTORS



These motors are built for high quality performance backed by unmatched customer support.

MJ Series

Low Speed

High Torque Motors

- Roller gerotor design for smooth performance, efficiency, and durability
- Tapered roller bearings for extra side load capacity
- Standard case drain with integral internal drain for extended life
- Disc valve for higher flows and higher pressure
- The MJ200 and MJ475 are available in $\frac{7}{8}$ " O-Ring ports



**Muncie[®]
Power
Products**

1-800-367-7867

PART NUMBERS

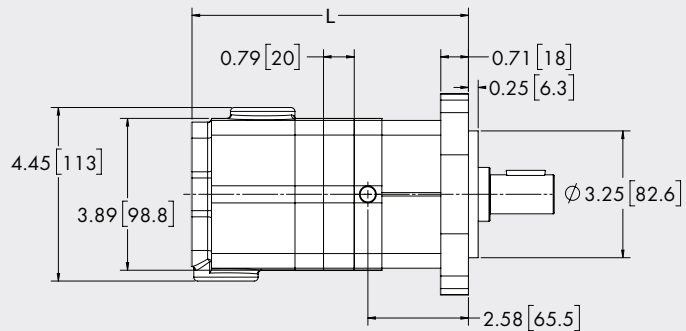
PART NUMBERS	DISP. (CC)	SHAFT	FLANGE	PORTS
MJ200-29ZFM-01XBB	200	1" 6B Spline Shaft	4-Bolt, SAE A	7/8" O-Ring
MJ475-29ZFM-01XBB	475	1" 6B Spline Shaft	4-Bolt, SAE A	7/8" O-Ring

SPECIFICATIONS

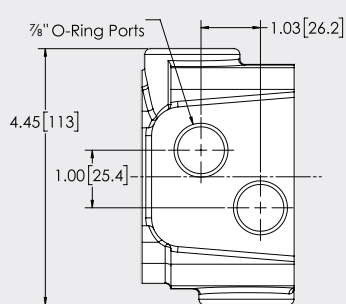
MODEL NUMBER	SPEED	TORQUE		FLOW		PRESSURE	
	RPM	in.lbs.	Nm	GPM	LPM	PSI	BAR
MJ200	375	5,185	586	19.8	75	3,045	21.0
MJ475	155	8,055	910	19.8	75	2,030	14.0

DIMENSIONS

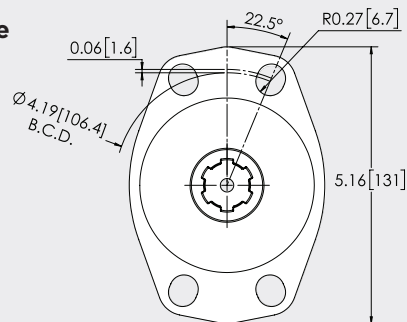
DISPLACEMENT	LENGTH (L)	
	in	mm
MJ200	7.7	195
MJ475	9.6	244



**Ports
"FM":**



**Flange
"Z":**



**Shafts
"29":**

