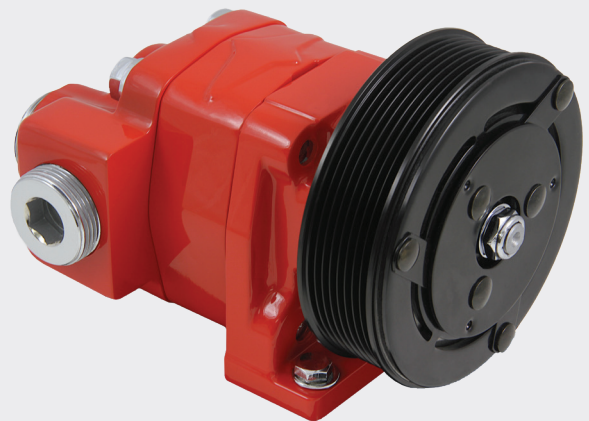


H SERIES CLUTCH PUMPS FOR 2019/2020 FORD TRUCKS



**FEATURING
PH1 CLUTCH PUMPS**



These pumps can be used in situations where a PTO aperture is unavailable or difficult to access.

H Series

**Space-Saving Performance
at the Flip of a Switch**

- All cast iron construction
- Speeds up to 4,000 RPM
- Pressures to 3,500 PSI
- Solid, one-piece shaft
- Integral mounting pad
- Both side and rear ports
- Available for both gas and diesel engines



**Muncie[®]
Power
Products**

1-800-367-7867

CLUTCH PUMP MODEL SPECIFICATIONS

MODEL NUMBER	BELT	ROTATION
SBPH1-03*R	0.62 in ³ , 6 Groove Poly Belt	RH
SB8PH1-03*R	0.62 in ³ , 8 Groove Poly Belt	RH
SBPH1-05*R	1.24 in ³ , 6 Groove Poly Belt	RH
SB8PH1-05*R	1.24 in ³ , 8 Groove Poly Belt	RH
SBPH1-07*R	1.55 in ³ , 6 Groove Poly Belt	RH
SB8PH1-07*R	1.55 in ³ , 8 Groove Poly Belt	RH
SB8PH1-09*R	2.17 in ³ , 8 Groove Poly Belt	RH
SB8PH1-11*R	2.48 in ³ , 8 Groove Poly Belt	RH

*Port Type (Side and Rear): P – NPT -20 Inlet, -12 outlet
S – SAE -20 Inlet, -12 outlet

SBPH1 pumps with 6 groove clutch for use with 6.2L gas in-line mounting kit: CMKF17-6200-XP6-AC

MOUNTING KIT OPTIONS

KIT NUMBER	RATIO	HP	PULLEY	CHASSIS
CMKF11-6200-P8W-AC	1.18	18	A8	2011–2020 6.2L Gas Ford Super Duty F-250–F-350 w/wo AC, w/wo HD Alt., Includes HD water pump
CMKF17-6200-XP6-AC	1.08	10	I6	2017–2020 6.2L Gas Ford Super Duty F-250–F-550 w/wo AC, w/wo HD Alt., 10 HP Limit, 1.75 cu.in. Max.
CMKF12-6700-P8-AC	1.35	18	A8	2012–2020 6.7L Diesel Ford Super Duty F-250–F-550, 2016–2021 F-650–F-750 With single alternator and single alt. water pump, Max. pump size - PH9, must use side ports on pump, must use 45° fittings. Note: For 2017 MY, box must have 10/10/16 or newer date on it.
CMKF17-6700-P8-AC	1.35	18	A8	2017–2020 6.7L Diesel Ford Super Duty F-250–F-550 Must have dual alternators

Coming Soon: Kits for 2020 7.3L Gas Ford Super Duty F-250–F-550



A Member of the Interpump Group
MI20-06 (Rev. 04-20)

201 East Jackson Street • Muncie, Indiana 47305
800-367-7867 • Fax 765-284-6991 • info@munciepower.com • www.munciepower.com
Specifications are subject to change without notice. Visit www.munciepower.com
for warranties and literature. All rights reserved. © Muncie Power Products, Inc. (2020)