

# ONE-TON TRUCK

## CONTROL SOLUTIONS



# Omni-System® ONE - TON

**APPLICATIONS:** Plow, dump, spreader, and pre-wet

- Groundspeed oriented controlled with data logging
- Fully proportional cylinder control with joystick options
- Flow sharing design keeps the cylinders and spreader working with low pump flow



## OESP 3020

**APPLICATIONS:** Dump and spreader

- Includes flow sharing, auto or manual operation, and 5 levels of control for auger, spinner, and hoist
- Fits Class 5 chassis including tailgate, V-body, muni-body, and spreader systems



## OESP 3016/3017

**APPLICATION:** Spreader

- Upgraded controller with digital readout, simple setup, and optional adjustable RAM mounting system
- Fits Class 5 to Class 8 chassis including tailgate, V-body, muni-body, and spreader systems



## MEETING THESE NEEDS

| ONE-TON APPLICATION OPTIONS        | OMNI-SYSTEM® | V080 | OESP 3020 | OESP 3016/3017 |
|------------------------------------|--------------|------|-----------|----------------|
| Electronic Spreader Control        | ✓            | ✓    | ✓         | ✓              |
| Groundspeed Orientation            | ✓            | ✓    | ✓         | ✓              |
| Powder Coat or Stainless Enclosure | ✓            | ✓    | ✓         | ✓              |
| Turnkey Installation               | ✓            | ✓    | ✓         | ✓              |
| Hoist                              | ✓            | ✓    | ✓         |                |
| Front Plow                         | ✓            | ✓    |           |                |
| Wing / Scraper Plows               | ✓            | ✓    |           |                |
| Liquid Pre-wet Systems             | ✓            |      |           | ✓              |
| Data Logging                       | ✓            |      |           |                |



# OTHER SYSTEM PAIRINGS AND OPTIONS

## PRE-WET PACKAGES

**APPLICATION:** Electrically & hydraulically controlled pre-wet pump

- Designed to be paired with the Omni-System®
- Consistent output able to follow groundspeed control



## HYDRAULIC RESERVOIRS

- Available in numerous capacities and configurations
- Powder coated and stainless options available



## MANUAL SPREADER VALVES

**APPLICATION:** Manual spreader control

- A tried-and-true product, our manual spreader valves are considered an old standby and have been utilized in snow and ice applications for years.



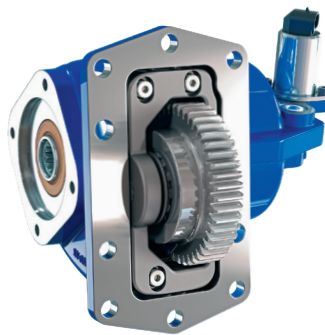
## DIRECTIONAL CONTROL VALVES

- Different spool, control, positioner, and accessory options allow for customization of Muncie Power's directional valves.
- Each work section comes preassembled and tested prior to shipment for customer satisfaction.
- Available in air, cable, or electric shift



## F20 SERIES PTO

- Muncie Power's F20 Series clutch shift power take-off is designed specifically for Ford's 10R140 10-speed transmission on Class 3-5 Ford trucks.
- This PTO utilizes the full transmission torque capacity of 300 lbs.ft., and features patented noise abatement technology.



## CLUTCH PUMP OPTION

- The preferred option for Allison 1000 and 2000 Series transmissions where torque converter could provide inadequate PTO performance for mobile applications at low vehicle speeds.
- High performance and compact cast iron housings make Muncie Power's clutch pumps a good choice for many central hydraulic systems.
- Flow ratings up to 11 GPM and pressures up to 4,350 PSI.



## HYDRAULIC HOSE AND FITTINGS

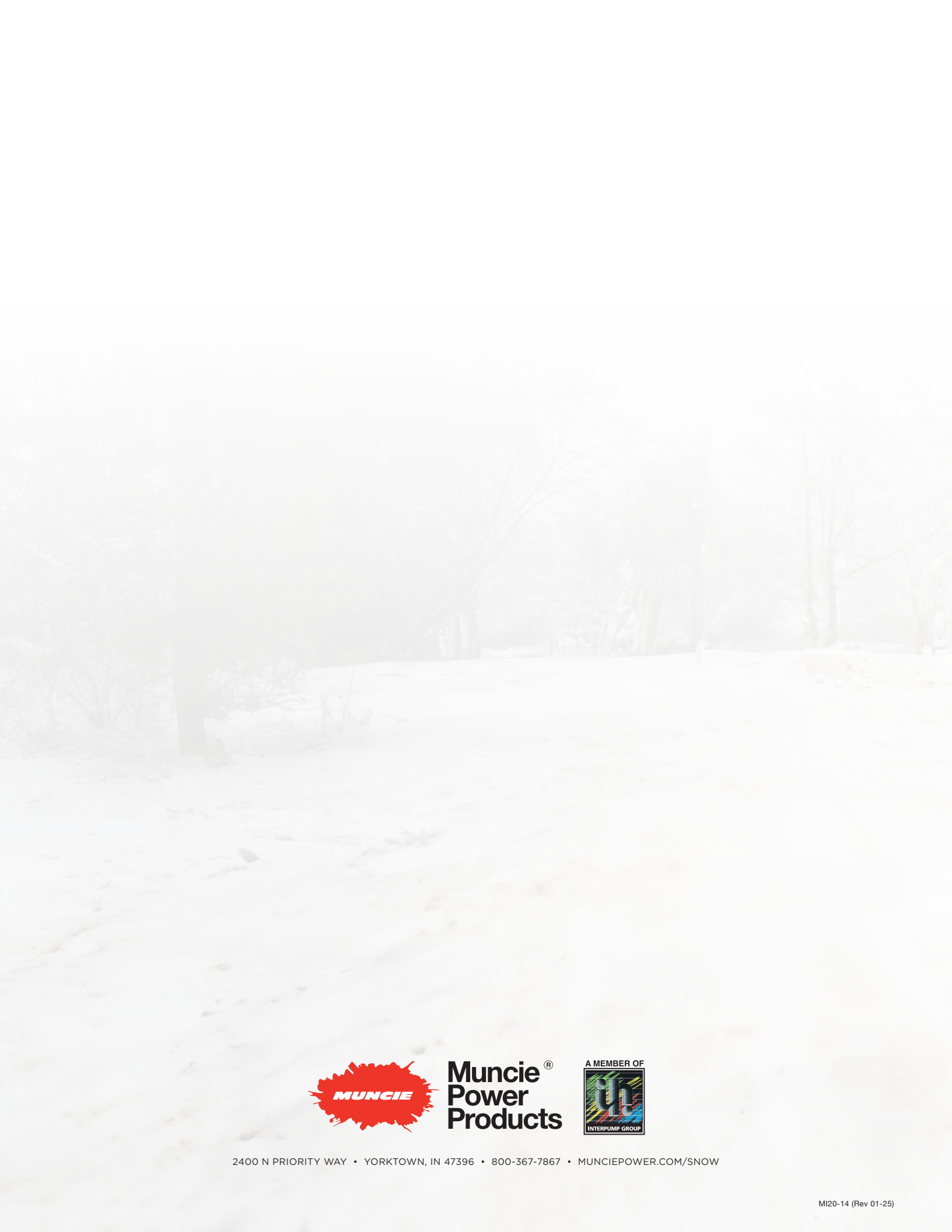
Muncie Power offers the Interpump Fluid Solutions line of hose, fittings, and crimpers. With our primary inventory warehouse in Muncie, Indiana, we are ready to meet the needs of the snow and ice market.



HySO-FLEX 5K



HySO-FLEX 6K



**Muncie<sup>®</sup>**  
**Power**  
**Products**



2400 N PRIORITY WAY • YORKTOWN, IN 47396 • 800-367-7867 • [MUNCIEPOWER.COM/SNOW](http://MUNCIEPOWER.COM/SNOW)