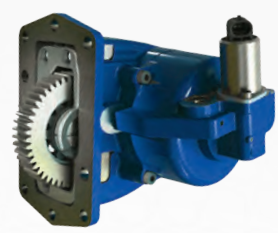




UTILITY PRODUCT OVERVIEW



POWER TAKE-OFFS AND HYDRAULIC COMPONENTS





Muncie Power Products, Inc. is a proud manufacturer of power take-offs and fluid power components for applications within the refuse industry. Since the company was founded in 1935, Muncie Power Products has taken great pride in providing unparalleled service to each and every customer. In collaboration with other companies within the Interpump Group, Muncie Power Products has the ability to provide access to nearly every major component in a hydraulic system with the dependability you've come to expect from Muncie Power Products.

At Muncie Power Products, it's about more than building hydraulic components; it's about building trust.



**WE BUILD
TRUST.**



BUCKET TRUCKS



CRANE



KNUCKLE BOOM



Available with the Muncie Start®

TITAN® MC1 SERIES

- A medium-duty, clutch shift power take-off replacing the CS24/25 and HS24 Series
- The Titan MC1 power take-off has raised the bar on the life expectancy and durability of truck-mounted PTOs

MAX TORQUE
INTER/CONTINUOUS: 415 lbs.ft. (563 Nm)

MAX HP (@ 1,000 RPM)
INTER/CONTINUOUS: 79 HP (59 kW)

APPROX. WEIGHT 47.2 lbs. (21.4 Kg.)

Muncie Start®: Shift Code SX (12VDC Integral) or Shift Code SR (12VDC Remote Mount)

TRANSMISSION: ALLISON



CS10/11 SERIES

- Direct-mount flanges with ability to rotate allow pump to be positioned for maximum clearance
- PTO can be mounted shaft high or low on either side of the transmission

MAX TORQUE
INTERMITTENT: 500 lbs.ft. (678 Nm)

MAX HP (@ 1,000 RPM)
INTERMITTENT: 95 HP (71 kW)

APPROX. WEIGHT 68 lbs. (30.9 Kg.)

TRANSMISSION: ALLISON

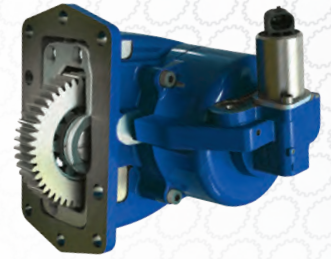
F20 SERIES

- 10-bolt clutch shift PTO
- Designed for the Ford Super Duty trucks F-250–F-600, with the Ford 10R140 transmission
- Features patent-pending noise abatement technology
- Solenoid activated

MAX TORQUE INTERMITTENT:	261 lbs.ft. (353 Nm)
MAX HP (@ 1,000 RPM) INTERMITTENT:	50 HP (37 kW)
APPROX. WEIGHT	29 lbs. (13.2 Kg.)

Muncie Start®: Shift Code GS (Gas Engine) or Shift Code DS (Diesel Engine)

TRANSMISSIONS: FORD 10R140



Available with the Muncie Start®

FR6Q SERIES

- Fits Ford Super Duty trucks with Ford 6R140 transmission, primarily F-350-550 (may also be used on F-650/F-750)
- Noise abatement mechanism eliminates virtually all gear rattle noise

MAX TORQUE INTERMITTENT:	200 lbs.ft. (271 Nm)
MAX HP (@ 1,000 RPM) INTERMITTENT:	39 HP (29 kW)
APPROX. WEIGHT	35 lbs. (15.9 Kg.)

Muncie Start®: Special Feature option 6 (Stationary or Mobile) or Special Feature option 7 (Stationary and Mobile, only available on 6, F, and D shift types)

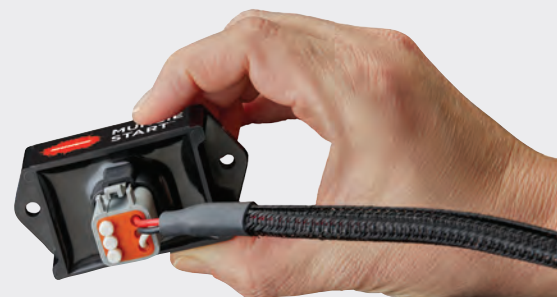
TRANSMISSION: FORD 6R140



Available with the Muncie Start®

MUNCIE START®

The Muncie Start PTO option provides controlled clutch engagement for applications that see high torque demands upon initial startup. The Muncie Start is the ideal solution to eliminate damaging torque spikes through the PTO, truck drivetrain, and mounted auxiliary equipment thereby significantly increasing the life of the entire system.



PTO SHAFT EXTENSIONS



EX Drive

- The EX Drive is designed for Allison 3000 and 4000 Series transmissions with a cooler or retarder, allowing for large gear or piston pumps to be direct mounted
- The shaft extension is available for most Allison 3000 and 4000 Series transmissions, making installation easier by moving the hydraulic pump mount to the rear of the transmission

MAX TORQUE
SAME AS "DRIVING"
PTO RATING

MAX HP (@ 1,000 RPM)
SAME AS "DRIVING"
PTO RATING

These shaft extensions are compatible with Muncie Power's CS10/11, CS24, CS40/41, and TITAN MC1 power take-offs.

APPROX. WEIGHT 42 lbs. (19.1 Kg.)

F SERIES



- 11 pump sizes available to fit a wide variety of applications
- Pressure-balanced bushing blocks and sleeve bearings provide long life and high performance

MAX OP. PRESSURE	3,625-2,320 PSI (250-160 BAR)
FLOW RATE (@ 1,000 RPM)*	1.60-8.70 GPM (6.06-33.0 LPM)
DISPLACEMENT	0.37-2.01 cu.in. (06-33 cc.)
APPROX. WEIGHT	7.69-10.01 lbs. (3.4-4.5 Kg.)

H SERIES



- All cast iron bushing pump designed for low to medium flow systems
- Available with integral, priority flow control capabilities; great for use on steering applications

MAX OP. PRESSURE	3,500-2,500 PSI (241-172 BAR)
FLOW RATE (@ 1,000 RPM)*	2.7-10.7 GPM (10-41.0 LPM)
DISPLACEMENT	0.62-2.48 cu.in. (10.2-40.6 cc.)
APPROX. WEIGHT	18-25 lbs. (8.3-11.3 Kg.)

K SERIES



- All cast iron construction with 4 ports and roller bearing design
- Designed to meet the application needs of either a pump or a motor

MAX OP. PRESSURE	3,000-2,500 PSI (207-172 BAR)
FLOW RATE (@ 1,000 RPM)*	4.2-17.1 GPM (15-64 LPM)
DISPLACEMENT	0.98-3.94 cu.in. (16.1-64.6 cc.)
APPROX. WEIGHT	26.5-34.1 lbs. (12.1-15.5 Kg.)

* Flow rates are theoretical.

L SERIES

- All cast iron construction with 4 ports and roller bearing design
- Bi-rotational feature helps reduce inventory requirements

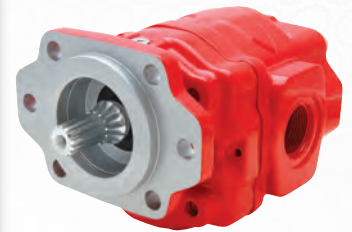
MAX OP. PRESSURE	3,000-2,500 PSI (207-172 BAR)
FLOW RATE (@ 1,000 RPM)*	13.8-30.3 GPM (53-114 LPM)
DISPLACEMENT	3.18-7.01 cu.in. (52.1-114.9 cc.)
APPROX. WEIGHT	30.9-51.0 lbs. (18.1-23.2 Kg.)



OPTIMUM W SERIES

- Provides 8 displacements to cover lower flow rates, higher pressure requirements
- Bi-rotational, 4-port design is standard with speeds up to 3,600 RPM

MAX OP. PRESSURE	4,350-3,000 PSI (300-210 BAR)
FLOW RATE (@ 1,000 RPM)*	6.3-25.4 GPM (23.9-96.2 LPM)
DISPLACEMENT	1.45-4.87 cu.in. (23.9-79.8 cc.)
APPROX. WEIGHT	40.8-50.7 lbs. (18.5-23.0 Kg.)



OPTIMUM X SERIES

- Provides 9 displacements to cover medium to heavy flow, high-pressure requirements
- Bi-rotational, 4-port design is standard with speeds up to 3,000 RPM

MAX OP. PRESSURE	4,350-2,250 PSI (300-155 BAR)
FLOW RATE (@ 1,000 RPM)*	13.8-36.5 GPM (51.2-138.2 LPM)
DISPLACEMENT	3.18-8.43 cu.in. (52.1-138 cc.)
APPROX. WEIGHT	52.9-67.0 lbs. (24.0-30.4 Kg.)



P SERIES

- Offers high-speed capabilities up to 2,400 RPM
- Bi-rotational operation with 4 standard sizes

MAX OP. PRESSURE	5,075 PSI (350 BAR)
FLOW RATE (@ 1,000 RPM)*	3.17-8.70 GPM (12.0-32.9 LPM)
DISPLACEMENT	0.73-2.01 cu.in. (12-33 cc.)
APPROX. WEIGHT	23.2 lbs. (10.5 Kg.)



Q SERIES



- Offers high-operating pressures and speeds up to 1,800 RPM
- Bi-rotational operation with 5 standard sizes

MAX OP. PRESSURE	Up to 5,075 PSI (350 BAR)
FLOW RATE (@ 1,000 RPM)*	5.01-15.8 GPM (19.0-59.8 LPM)
DISPLACEMENT	1.16-3.66 cu.in. (19-60 cc.)
APPROX. WEIGHT	23.2 lbs. (10.5 Kg.)

R SERIES



- Provides high-flow capabilities with speeds up to 1,600 RPM
- Bi-rotational operation with 4 standard sizes for the R Series and 2 standard sizes for the tandem

MAX OP. PRESSURE	R Series: 4,350 PSI (300 BAR) R Series Tandem: 4,350 PSI (300 BAR)
FLOW RATE (@ 1,000 RPM)*	R Series: 18.5-26.4 GPM (70.0-99.9 LPM) R Series Tandem: 10.8-13.4 GPM (40.9-50.7 LPM)**
DISPLACEMENT	R Series: 4.27-6.10 cu.in. (70-100 cc.) R Series Tandem: 2.50-3.11 cu.in. (41-51 cc.)
APPROX. WEIGHT	R Series: 38.6 lbs. (75 Kg.) R Series Tandem: 39.0 lbs. (17.7 Kg.)

T SERIES



- A bent-axis piston pump with speed capabilities of up to 2,100 RPM
- Double shaft seals with 4 standard sizes

MAX OP. PRESSURE	6,525-5,075 PSI (450-350 BAR)
FLOW RATE (@ 1,000 RPM)*	12.4-28.5 GPM (46.9-107.9 LPM)
DISPLACEMENT	2.87-6.59 cu.in. (47-108 cc.)
APPROX. WEIGHT	23.1-29.8 lbs. (10.5-13.5 Kg.)

METAL ROUND



- Designed for hardworking, continuous-duty applications
- Available in aluminum for lighter weight or steel for higher heat applications
- Offered in a wide variety of sizes

VOLUMES	Aluminum (5 sizes): 25-100 gal. (94.6-1,432.9 L) Steel (5 sizes): 25-100 gal. (94.6-1,432.9 L)
DIMENSIONS	Aluminum: 24 in. dia. x 15 in.-51 in. Long Steel: 24 in. dia. x 15 in.-51 in. Long
APPROX. WEIGHT	Aluminum: 73-180 lbs. (33.1-81.7 Kg.) Steel: 101-226 lbs. (45.8-102.5 Kg.)

METAL UPRIGHT

- Designed for hard working, continuous-duty applications
- Available in aluminum for lighter weight or steel for higher heat applications
- Easy installation and accessibility

VOLUMES	
Aluminum (3 sizes):	50-100 gal. (189.3-1,432.9 L)
Steel (4 sizes):	50-100 gal. (189.3-1,432.9 L)
DIMENSIONS	
Aluminum:	Varies
Steel:	Varies
APPROX. WEIGHT	
Aluminum:	77-130 lbs. (34.9-59.0 Kg.)
Steel:	150-248 lbs. (68.0-128.8 Kg.)



V050 SERIES

- Small size, lightweight valve with versatile design configurations
- Available with 7, standard back-cap options and 5, standard control options

FLOW RATE	
Nominal:	13 GPM (50 LPM)
Maximum:	16 GPM (60 LPM)
MAX PRESSURE	
1-3 Sections:	5,440 PSI (375 BAR)
4-6 Sections:	5,075 PSI (350 BAR)
7-10 Sections:	4,710 PSI (325 BAR)
MAX BACK PRESSURE	365 PSI (25 BAR)



V080 SERIES

- Constructed with high-grade iron castings and nickel-plated spools for use in high-pressure applications
- Load checks and inlet relief valve are standard

FLOW RATE	
Nominal:	21 GPM (80 LPM)
Maximum:	30 GPM (114 LPM)
MAX PRESSURE	
1-3 Sections:	5,075 PSI (350 BAR)
4-6 Sections:	4,650 PSI (320 BAR)
7-10 Sections:	4,350 PSI (300 BAR)
MAX BACK PRESSURE	365 PSI (25 BAR)



L125 SECTIONAL LOAD SENSE

- Closed-centered, post-compensated with flow sharing sections that have local compensators, creating an efficient hydraulic control valve
- Offers both manual and electrohydraulic control options

FLOW RATE	
Nominal:	33 GPM (125 LPM)
Maximum:	
Inlet:	40 GPM (150 LPM)
Work Section:	26 GPM (100 LPM)
MAX PRESSURE	5,075 PSI (350 BAR)
STAND BY PRESSURE	200 PSI (14 BAR)
MAX BACK PRESSURE	145 PSI (10 BAR)



* L275 Control Valve available soon

SAE 100R7 THERMOPLASTIC



Standard



Non-conductive

- Specification: SAE 100R17
- Special Features/Approvals: ABS Approval; MSHA Approved Outer Cover
- Fittings: One-piece G Series

MAX WORKING PRESSURE 1,015-3,045 PSI (70-210 BAR)

REINFORCEMENT TYPE 1 or 2 Braids of Synthetic Fiber

OPERATING TEMPS -40°F to +212°F (-40°C to +100°C); -40 40°F to +158°F (-40°C to +70°C) for Water Based Fluids

AVAILABLE SIZES -02 through -16 (1/8"-1")

HY-VACUUM R4



- Specification: SAE 100R4
- Special Features/Approvals: for use in inlet and suction applications where vacuum is present

MAX WORKING PRESSURE 58-305 PSI (4-21 BAR)

REINFORCEMENT TYPE 2 Textile Braids + 1 Steel Helical Wire

OPERATING TEMPS -40°F to +212°F (-40°C to +100°C) Continuous

AVAILABLE SIZES -12 through -48 (3/4"-3")

HYDRAULIC OIL FILTERS

Reduce contamination related failures and equipment downtime with Muncie Power Products' hydraulic filters, available in both nominal and absolute filtration.





DIGGER DERRICKS

TITAN® MC1 SERIES

- A medium-duty, clutch shift power take-off replacing the CS24/25 and HS24 Series
- The Titan MC1 power take-off has raised the bar on the life expectancy and durability of truck-mounted PTOs

MAX TORQUE INTER/CONTINUOUS:	415 lbs.ft. (563 Nm)
MAX HP (@ 1,000 RPM) INTER/CONTINUOUS:	79 HP (59 kW)
APPROX. WEIGHT	47.2 lbs. (21.4 Kg.)

Muncie Start®: Shift Code SX (12VDC Integral) or Shift Code SR (12VDC Remote Mount)

TRANSMISSION: ALLISON



Available with the Muncie Start®

CS40/41 SERIES

- Heavy-duty 10-bolt clutch shift PTO
- Precision-ground gears allow for high-torque capacity with quiet operation
- Use CS40-A10 for 3700 Series

MAX TORQUE INTERMITTENT:	600 lbs.ft. (813 Nm)
MAX HP (@ 1,000 RPM) INTERMITTENT:	114 HP (85 kW)
APPROX. WEIGHT	69 lbs. (31.3 Kg.)

Muncie Start®: Special Feature option 6

TRANSMISSION: ALLISON



CS10/11 SERIES



- Heavy-duty 10-bolt clutch shift PTO
- Versatility for both remote and direct mount pumps with rotatable direct mount flanges

MAX TORQUE
INTERMITTENT: 500 lbs.ft. (678 Nm)

MAX HP (@ 1,000 RPM)
INTERMITTENT: 95 HP (71 kW)

APPROX. WEIGHT 68 lbs. (30.9 Kg.)

TRANSMISSION: ALLISON

TITAN[®] MD1 SERIES



- Medium-duty 10-bolt constant drive PTO designed to replace front, crankshaft-driven pumps
- Boasts improved torque capacity, longer life, and increased durability

MAX TORQUE
INTER/CONTINUOUS: 415 lbs.ft. (563 Nm)

MAX HP (@ 1,000 RPM)
INTER/CONTINUOUS: 79 HP (59 kW)

APPROX. WEIGHT 38 lbs. (17.24 Kg.)

TRANSMISSION: ALLISON



EX Drive

Shaft Extension

PTO SHAFT EXTENSIONS

- The EX Drive is designed for Allison 3000 and 4000 Series transmissions with a cooler or retarder, allowing for large gear or piston pumps to be direct mounted
- The shaft extension is available for most Allison 3000 and 4000 Series transmissions, making installation easier by moving the hydraulic pump mount to the rear of the transmission

MAX TORQUE
SAME AS "DRIVING"
PTO RATING

MAX HP (@ 1,000 RPM)
SAME AS "DRIVING"
PTO RATING

APPROX. WEIGHT 42 lbs. (19.1 Kg.)

These shaft extensions are compatible with Muncie Power's CS10/11, CS24, CS40/41, TITAN MC1, and TITAN MD1 power take-offs.

K SERIES



- All cast iron construction with 4 ports and roller bearing design
- Designed to meet the application needs of either a pump or a motor

MAX OP. PRESSURE 3,000-2,500 PSI (207-172 BAR)

FLOW RATE (@ 1,000 RPM)* 4.2-17.1 GPM (15-64 LPM)

DISPLACEMENT 0.98-3.94 cu.in. (16.1-64.6 cc.)

APPROX. WEIGHT 26.5-34.1 lbs. (12.1-15.5 Kg.)

* Flow rates are theoretical.

L SERIES

- All cast iron construction with 4 ports and roller bearing design
- Bi-rotational feature helps reduce inventory requirements

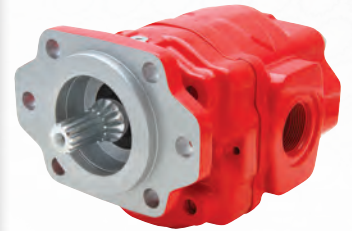
MAX OP. PRESSURE	3,000-2,500 PSI (207-172 BAR)
FLOW RATE (@ 1,000 RPM)*	13.8-30.3 GPM (53-114 LPM)
DISPLACEMENT	3.18-7.01 cu.in. (52.1-114.9 cc.)
APPROX. WEIGHT	30.9-51.0 lbs. (18.1-23.2 Kg.)



OPTIMUM W SERIES

- Provides 8 displacements to cover lower flow rates, higher pressure requirements
- Bi-rotational, 4-port design is standard with speeds up to 3,600 RPM

MAX OP. PRESSURE	4,350-3,000 PSI (300-210 BAR)
FLOW RATE (@ 1,000 RPM)*	6.3-25.4 GPM (23.9-96.2 LPM)
DISPLACEMENT	1.45-4.87 cu.in. (23.9-79.8 cc.)
APPROX. WEIGHT	40.8-50.7 lbs. (18.5-23.0 Kg.)



OPTIMUM X SERIES

- Provides 9 displacements to cover medium to heavy flow, high-pressure requirements
- Bi-rotational, 4-port design is standard with speeds up to 3,000 RPM

MAX OP. PRESSURE	4,350-2,250 PSI (300-155 BAR)
FLOW RATE (@ 1,000 RPM)*	13.8-36.5 GPM (51.2-138.2 LPM)
DISPLACEMENT	3.18-8.43 cu.in. (52.1-138 cc.)
APPROX. WEIGHT	52.9-67.0 lbs. (24.0-30.4 Kg.)



* Flow rates are theoretical.

METAL ROUND

- Designed for hardworking, continuous-duty applications
- Available in aluminum for lighter weight or steel for higher heat applications
- Offered in a wide variety of sizes

VOLUMES	Aluminum (5 sizes): 25-100 gal. (94.6-1,432.9 L) Steel (5 sizes): 25-100 gal. (94.6-1,432.9 L)
DIMENSIONS	Aluminum: 24 in. dia. x 15 in.-51 in. Long Steel: 24 in. dia. x 15 in.-51 in. Long
APPROX. WEIGHT	Aluminum: 73-180 lbs. (33.1-81.7 Kg.) Steel: 101-226 lbs. (45.8-102.5 Kg.)



METAL UPRIGHT



- Designed for hardworking, continuous-duty applications
- Available in aluminum for lighter weight or steel for higher heat applications
- Easy installation and accessibility

VOLUMES

Aluminum (3 sizes):	50-100 gal. (189.3-1,432.9 L)
Steel (4 sizes):	50-100 gal. (189.3-1,432.9 L)

DIMENSIONS

Aluminum:	Varies
Steel:	Varies

APPROX. WEIGHT

Aluminum:	77-130 lbs. (34.9-59.0 Kg.)
Steel:	150-248 lbs. (68.0-128.8 Kg.)

V080 SERIES



- Small size, lightweight valve with versatile design configurations
- Available with 7, standard back-cap options and 5, standard control options

FLOW RATE

Nominal:	13 GPM (50 LPM)
Maximum:	16 GPM (60 LPM)

MAX PRESSURE

1-3 Sections:	5,440 PSI (375 BAR)
4-6 Sections:	5,075 PSI (350 BAR)
7-10 Sections:	4,710 PSI (325 BAR)

MAX BACK PRESSURE

365 PSI (25 BAR)

L125 SECTIONAL LOAD SENSE



- Closed-centered, post compensated with flow sharing sections that have local compensators, creating an efficient hydraulic control valve
- Offers both manual and electrohydraulic control options

FLOW RATE

Nominal:	33 GPM (125 LPM)
Maximum:	
Inlet:	40 GPM (150 LPM)
Work Section:	26 GPM (100 LPM)

MAX PRESSURE

5,075 PSI (350 BAR)

STAND BY PRESSURE

200 PSI (14 BAR)

MAX BACK PRESSURE

145 PSI (10 BAR)

* L275 Control Valve available soon

SAE 100R7 THERMOPLASTIC

- Specification: SAE 100R17
- Special Features/Approvals: ABS Approval; MSHA Approved Outer Cover
- Fittings: One-piece G Series

MAX WORKING PRESSURE	1,015-3,045 PSI (70-210 BAR)
REINFORCEMENT TYPE	1 or 2 Braids of Synthetic Fiber
OPERATING TEMPS	-40°F to +212°F (-40°C to +100°C); -40 40°F to +158°F (-40°C to +70°C) for Water Based Fluids
AVAILABLE SIZES	-02 through -16 (1/8"-1")



Standard



Non-conductive

HY-VACUUM R4

- Specification: SAE 100R4
- Special Features/Approvals: for use in inlet and suction applications where vacuum is present

MAX WORKING PRESSURE	58-305 PSI (4-21 BAR)
REINFORCEMENT TYPE	2 Textile Braids + 1 Steel Helical Wire
OPERATING TEMPS	-40°F to +212°F (-40°C to +100°C) Continuous
AVAILABLE SIZES	-12 through -48 (3/4"-3")



SERVICE TRUCKS

TG SERIES



- Versatile PTO with 10 speed ratios for all popular transmissions
- Lightweight, reduced noise and superior heat dissipation

MAX TORQUE
INTERMITTENT: 285 lbs.ft. (386 Nm)

MAX HP (@ 1,000 RPM)
INTERMITTENT: 54 HP (40 kW)

APPROX. WEIGHT 22 lbs. (10.0 Kg.)

TRANSMISSIONS:

AISIN, ALLISON, EATON FULLER, MACK

CS6/8 SERIES



- Designed for Allison 1000 and 2000 Series automatic transmissions as well as many current manual transmissions offering direct-mount pump options
- Patented, Muncie Power drag break prevents shaft rotation in "off" mode
- Direct-mount flanges with ability to rotate allow the pump to be positioned for maximum clearance

MAX TORQUE
INTERMITTENT: 300 lbs.ft. (407 Nm)

MAX HP (@ 1,000 RPM)
INTERMITTENT: 57 HP (43 kW)

APPROX. WEIGHT 47-49 lbs. (21.3-22.2 Kg.)

TRANSMISSIONS:

AISIN, ALLISON, EATON FULLER, MACK

TITAN® MC1 SERIES

- A medium-duty, clutch shift power take-off replacing the CS24/25 and HS24 Series
- The Titan MC1 power take-off has raised the bar on the life expectancy and durability of truck-mounted PTOs

MAX TORQUE
INTER/CONTINUOUS: 415 lbs.ft. (563 Nm)

MAX HP (@ 1,000 RPM)
INTER/CONTINUOUS: 79 HP (59 kW)

APPROX. WEIGHT 47.2 lbs. (21.4 Kg.)

Muncie Start®: Shift Code SX (12VDC Integral) or Shift Code SR (12VDC Remote Mount)

TRANSMISSION: ALLISON



Available with the Muncie Start®

FR6Q SERIES

- Fits Ford Super Duty trucks with Ford 6R140 transmission, primarily F-350-550 (may also be used on F-650/F-750)
- Noise abatement mechanism eliminates virtually all gear rattle noise

MAX TORQUE
INTERMITTENT: 200 lbs.ft. (271 Nm)

MAX HP (@ 1,000 RPM)
INTERMITTENT: 39 HP (29 kW)

APPROX. WEIGHT 35 lbs. (15.9 Kg.)

Muncie Start®: Special Feature option 6 (Stationary or Mobile) or Special Feature option 7 (Stationary and Mobile, only available on 6, F, and D shift types)

TRANSMISSION: FORD 6R140



Available with the Muncie Start®

MUNCIE START®

The Muncie Start PTO option provides controlled clutch engagement for applications that see high torque demands upon initial startup. The Muncie Start is the ideal solution to eliminate damaging torque spikes through the PTO, truck drivetrain, and mounted auxiliary equipment thereby significantly increasing the life of the entire system.



F SERIES



- 11 pump sizes available to fit a wide variety of applications
- Pressure-balanced bushing blocks and sleeve bearings provide long life and high performance

MAX OP. PRESSURE	3,625-2,320 PSI (250-160 BAR)
FLOW RATE (@ 1,000 RPM)*	1.60-8.70 GPM (6.06-33.0 LPM)
DISPLACEMENT	0.37-2.01 cu.in. (06-33 cc.)
APPROX. WEIGHT	7.69-10.01 lbs. (3.4-4.5 Kg.)

K SERIES



- All cast iron construction with 4 ports and roller bearing design
- Designed to meet the application needs of either a pump or a motor

MAX OP. PRESSURE	3,000-2,500 PSI (207-172 BAR)
FLOW RATE (@ 1,000 RPM)*	4.2-17.1 GPM (15-64 LPM)
DISPLACEMENT	0.98-3.94 cu.in. (16.1-64.6 cc.)
APPROX. WEIGHT	26.5-34.1 lbs. (12.1-15.5 Kg.)

L SERIES



- All cast iron construction with 4 ports and roller bearing design
- Bi-rotational feature helps reduce inventory requirements

MAX OP. PRESSURE	3,000-2,500 PSI (207-172 BAR)
FLOW RATE (@ 1,000 RPM)*	13.8-30.3 GPM (53-114 LPM)
DISPLACEMENT	3.18-7.01 cu.in. (52.1-114.9 cc.)
APPROX. WEIGHT	30.9-51.0 lbs. (18.1-23.2 Kg.)

* Flow rates are theoretical.

V050 SERIES

- Small size, lightweight valve with versatile design configurations
- Available with 7, standard back-cap options and 5, standard control options

FLOW RATE	
Nominal:	13 GPM (50 LPM)
Maximum:	16 GPM (60 LPM)
MAX PRESSURE	
1-3 Sections:	5,440 PSI (375 BAR)
4-6 Sections:	5,075 PSI (350 BAR)
7-10 Sections:	4,710 PSI (325 BAR)
MAX BACK PRESSURE	365 PSI (25 BAR)



V080 SERIES

- Constructed with high-grade iron castings and nickel-plated spools for use in high-pressure applications
- Load checks and inlet relief valve are standard

FLOW RATE	
Nominal:	21 GPM (80 LPM)
Maximum:	30 GPM (114 LPM)
MAX PRESSURE	
1-3 Sections:	5,075 PSI (350 BAR)
4-6 Sections:	4,650 PSI (320 BAR)
7-10 Sections:	4,350 PSI (300 BAR)
MAX BACK PRESSURE	365 PSI (25 BAR)



V130 SERIES

- Internal, oil-core design allows for higher flow rates and low pressure drops in a compact package
- Tight tolerances and precision machining keep internal, spool leakages low

FLOW RATE	
Nominal:	34 GPM (130 LPM)
Maximum:	55 GPM (208 LPM)
MAX PRESSURE	
1-3 Sections:	5,440 PSI (375 BAR)
4-6 Sections:	5,075 PSI (350 BAR)
7-10 Sections:	4,710 PSI (325 BAR)
MAX BACK PRESSURE	365 PSI (25 BAR)



STEEL BOX



- Offered in a large variety of sizes from compact to mid-size
- Features multiple return ports, optional tank-top filter and sensors
- Designed for continuous-duty applications that generate significant amounts of heat

VOLUMES Available (7 sizes):	7-40 gal. (26.5-151.4 L)
DIMENSIONS	Varies
APPROX. WEIGHT	40-126 lbs. (18.1-57.2 Kg.)

METAL ROUND



- Designed for hardworking, continuous-duty applications
- Available in aluminum for lighter weight or steel for higher heat applications
- Offered in a wide variety of sizes

VOLUMES Aluminum (5 sizes): Steel (5 sizes):	25-100 gal. (94.6-1,432.9 L) 25-100 gal. (94.6-1,432.9 L)
DIMENSIONS Aluminum: Steel:	24 in. dia. x 15 in.-51 in. Long 24 in. dia. x 15 in.-51 in. Long
APPROX. WEIGHT Aluminum: Steel:	73-180 lbs. (33.1-81.7 Kg.) 101-226 lbs. (45.8-102.5 Kg.)

METAL UPRIGHT



- Designed for hardworking, continuous-duty applications
- Available in aluminum for lighter weight or steel for higher heat applications
- Easy installation and accessibility

VOLUMES Aluminum (3 sizes): Steel (4 sizes):	50-100 gal. (189.3-1,432.9 L) 50-100 gal. (189.3-1,432.9 L)
DIMENSIONS Aluminum: Steel:	Varies Varies
APPROX. WEIGHT Aluminum: Steel:	77-130 lbs. (34.9-59.0 Kg.) 150-248 lbs. (68.0-128.8 Kg.)

SAE 100R7 THERMOPLASTIC

- Specification: SAE 100R17
- Special Features/Approvals: ABS Approval; MSHA Approved Outer Cover
- Fittings: One-piece G Series

MAX WORKING PRESSURE	1,015-3,045 PSI (70-210 BAR)
REINFORCEMENT TYPE	1 or 2 Braids of Synthetic Fiber
OPERATING TEMPS	-40°F to +212°F (-40°C to +100°C); -40 40°F to +158°F (-40°C to +70°C) for Water Based Fluids
AVAILABLE SIZES	-02 through -16 (1/8"-1")



Standard



Non-conductive

HY-VACUUM R4

- Specification: SAE 100R4
- Special Features/Approvals: for use in inlet and suction applications where vacuum is present

MAX WORKING PRESSURE	58-305 PSI (4-21 BAR)
REINFORCEMENT TYPE	2 Textile Braids + 1 Steel Helical Wire
OPERATING TEMPS	-40°F to +212°F (-40°C to +100°C) Continuous
AVAILABLE SIZES	-12 through -48 (3/4"-3")



HYDRAULIC OIL FILTERS

Reduce contamination related failures and equipment downtime with Muncie Power Products' hydraulic filters, available in both nominal and absolute filtration.









With many years of combined experience, Muncie Power's team offers industry-leading customer service for its full line of products from power take-offs to hydraulic components.

Indiana

*Corporate Headquarters
Warehouse Distribution Center*
Toll Free: 800-367-7867

California

Muncie Distribution Center
Phone 559-651-1401

Georgia

Warehouse and Distribution Center
Phone: 770-499-1847

Ohio

Mobile Power Center
Phone: 614-552-0318

Oklahoma

Manufacturing Division and Distribution Center
Phone: 918-838-0900

Pennsylvania

Mobile Power Center
Phone: 610-539-4430

Texas

Muncie Distribution Center
Phone: 713-674-5289

Virginia

Muncie Distribution Center
Phone: 804-275-6724



A Member of the Interpump Group

www.munciepower.com