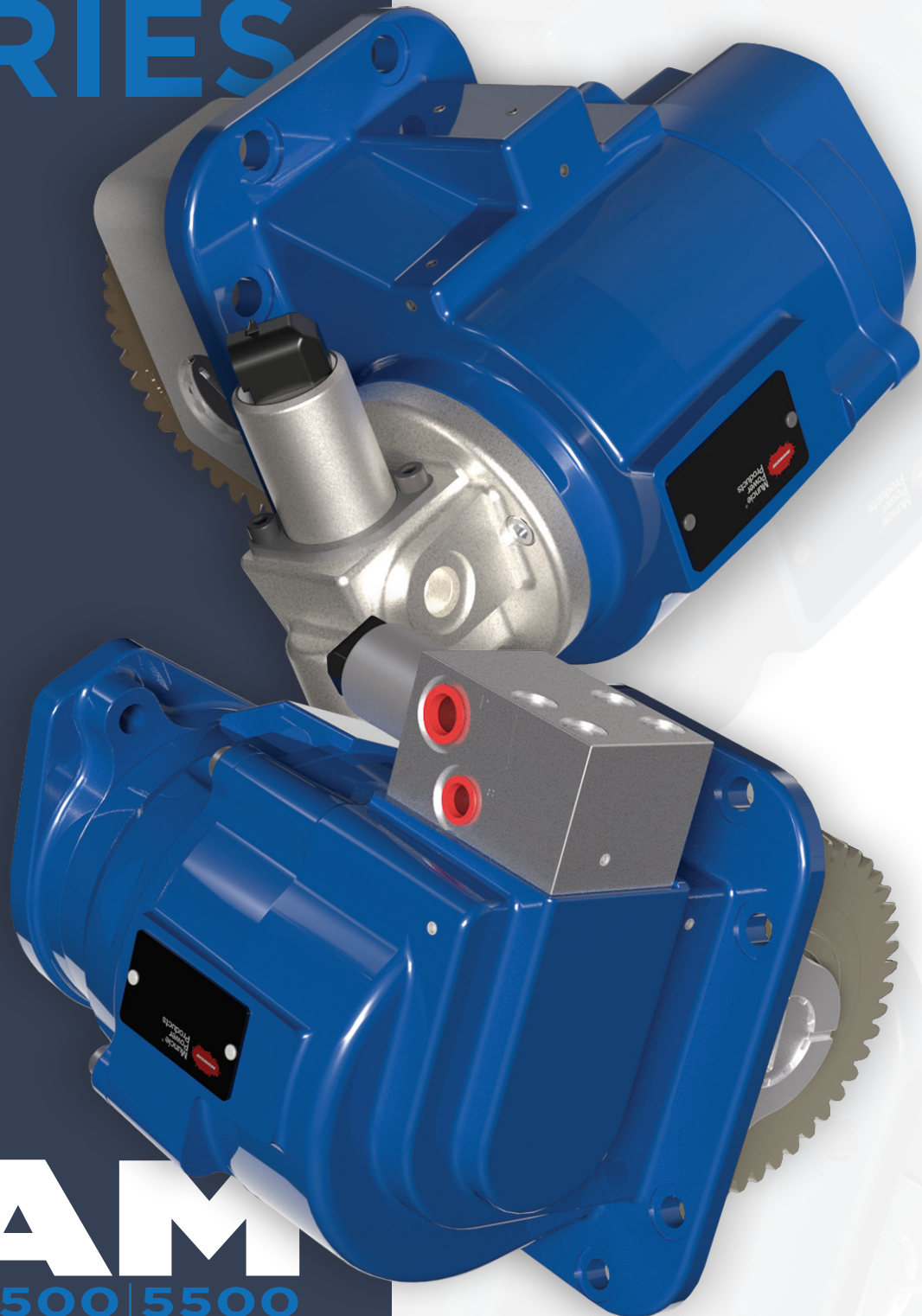


Z21 & Z25 SERIES



Muncie®
Power
Products



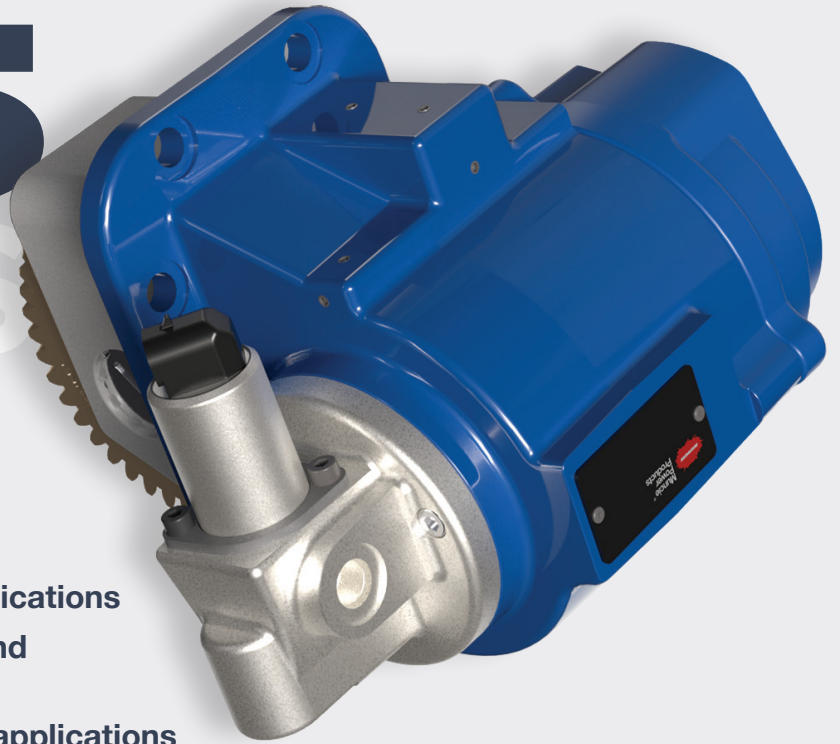
FOR

RAM

3500 | 4500 | 5500

TORQUEFLITE HD | ZF POWERLINE

Z225 SERIES



KEY FEATURES

- Light-duty, clutch shift PTO for TorqueFlite HD/ZF PowerLine
- Driver-side (left-side) only on RAM applications
- Designed for PF4 Series gear pumps and FX Series piston pumps
- Allows for direct mount pumps on 4x4 applications
- Round keyed output also available
- Single ratio option—145% of engine speed
- 125 lbs. ft. torque rating

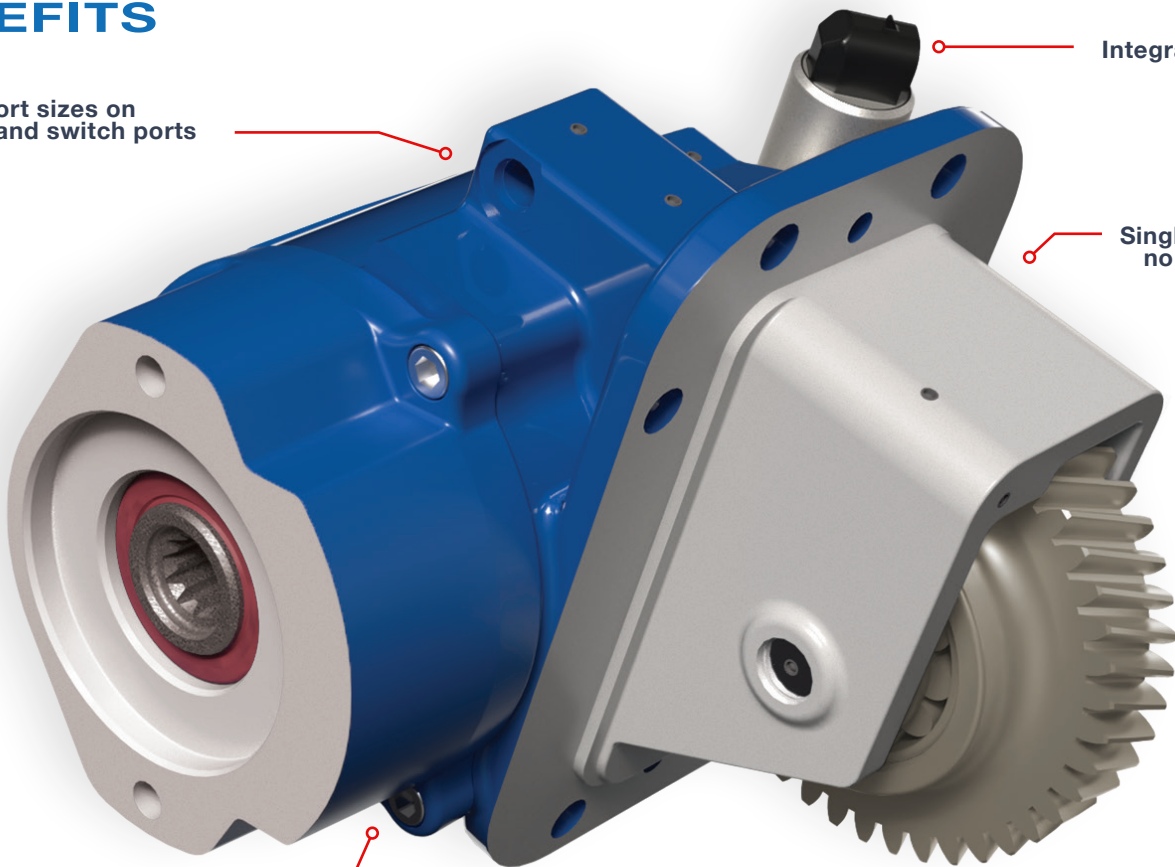
BENEFITS

Different port sizes on activation and switch ports

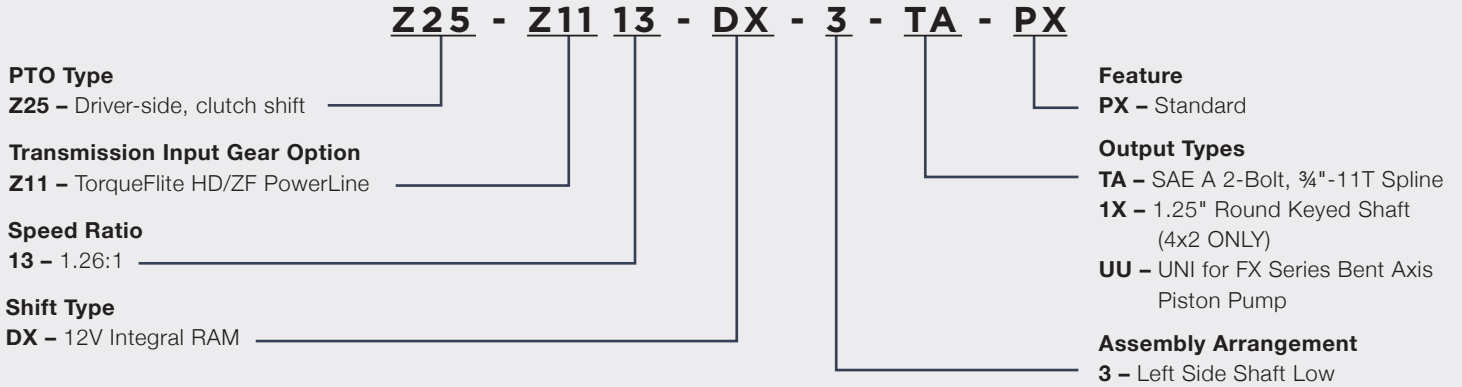
Integral solenoid

Single gasket—no measuring backlash

Low-profile housing

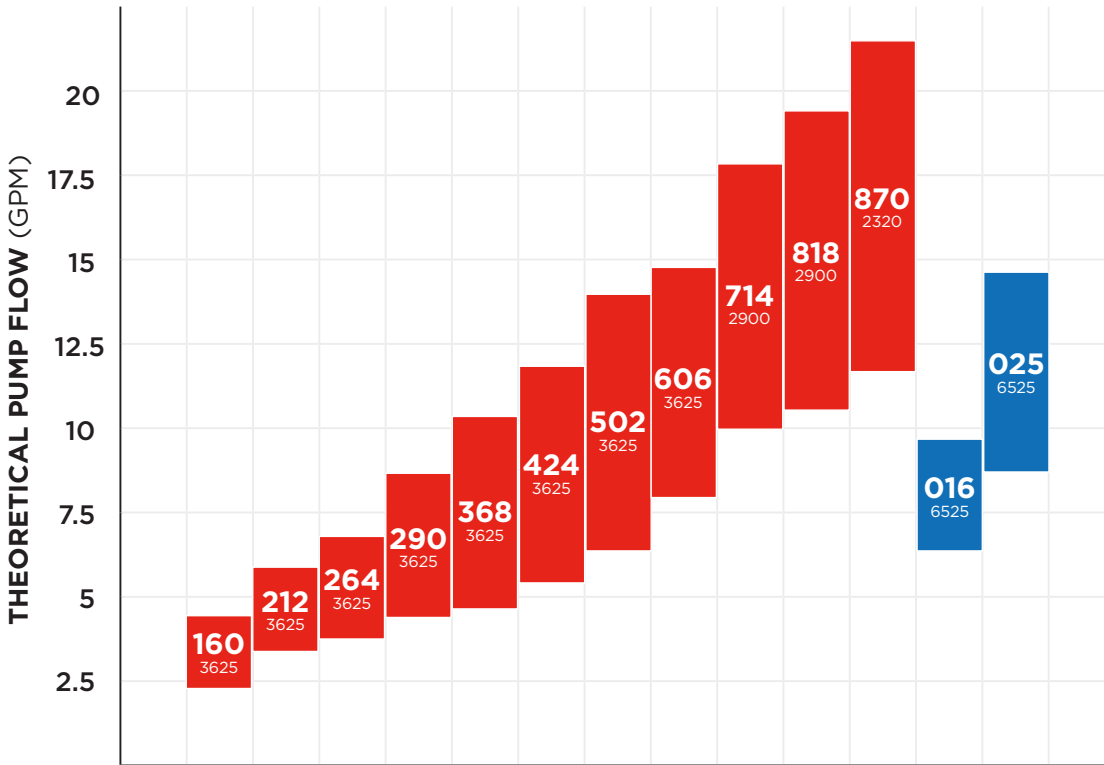


MODEL NO. CONSTRUCTION



COMPATIBLE PUMP CAPABILITIES

WHEN PAIRED WITH THE Z25 SERIES PTO



LEGEND:

Theoretical flow @ 1,900 engine RPMs →

Pump Model → **502**

Max. PSI → 3625

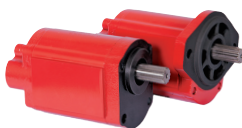
Theoretical flow @ 900 engine RPMs →

Example:
PF4-502

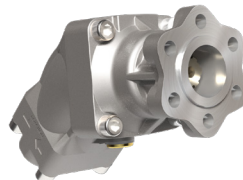
* PF4-606 through PF4-870 models have a max. engine RPM of 1,700

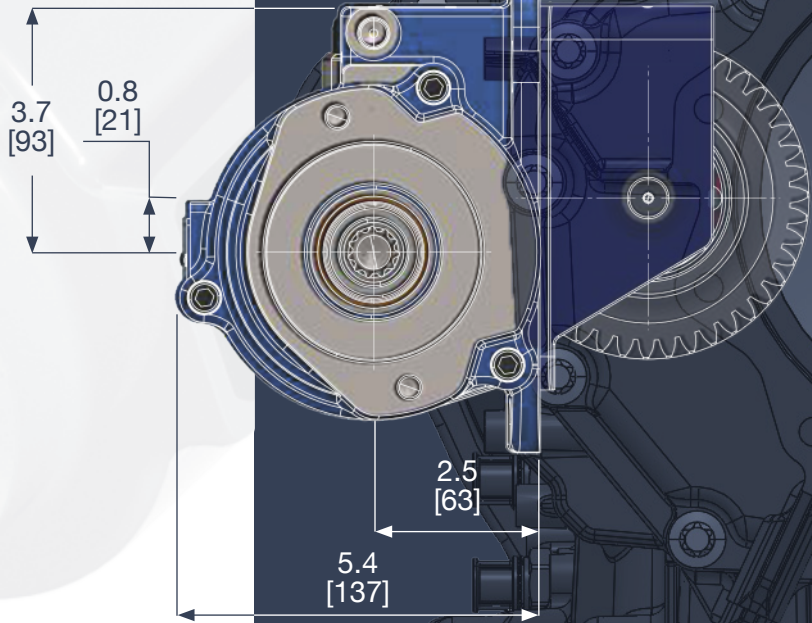
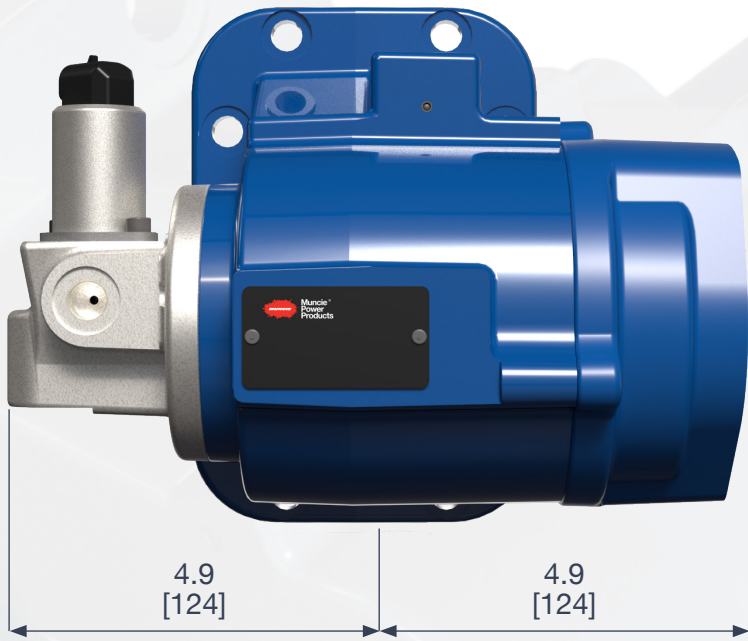
** 24FXG-016 and 24FXG-025 models have a max. engine RPM of 1,500

PF4 SERIES*



FX SERIES**





Z225

EAS

INSTAL

Z225

SERIES

FOR

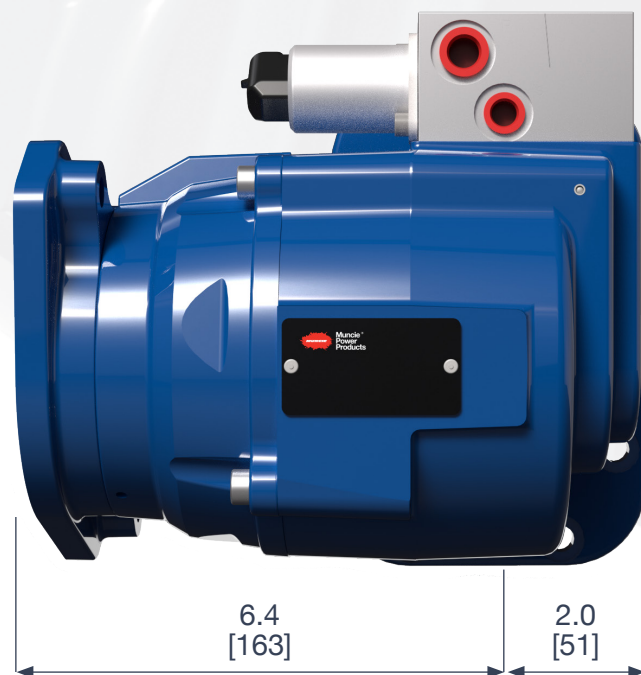
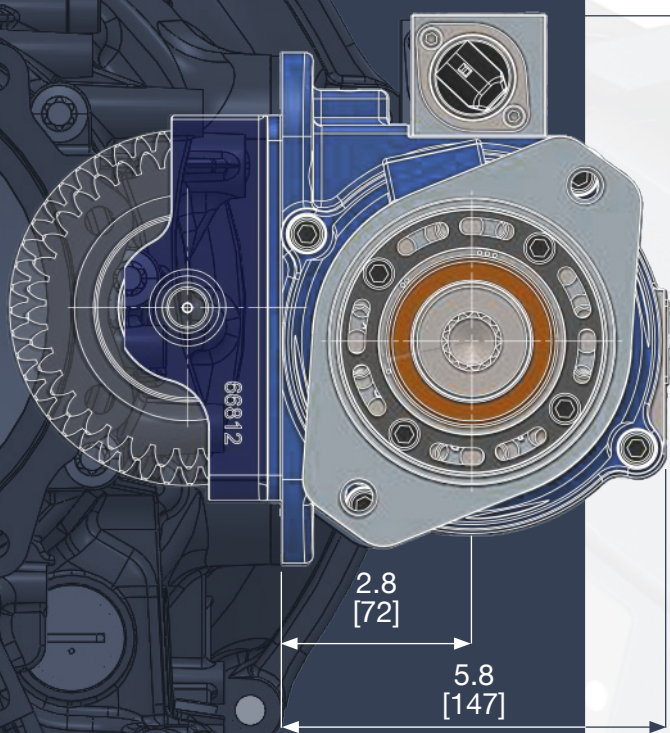
RA

3500 | 45

TORQUEFLITE HD

& Z21 SERIES RELATION

Z21 SERIES

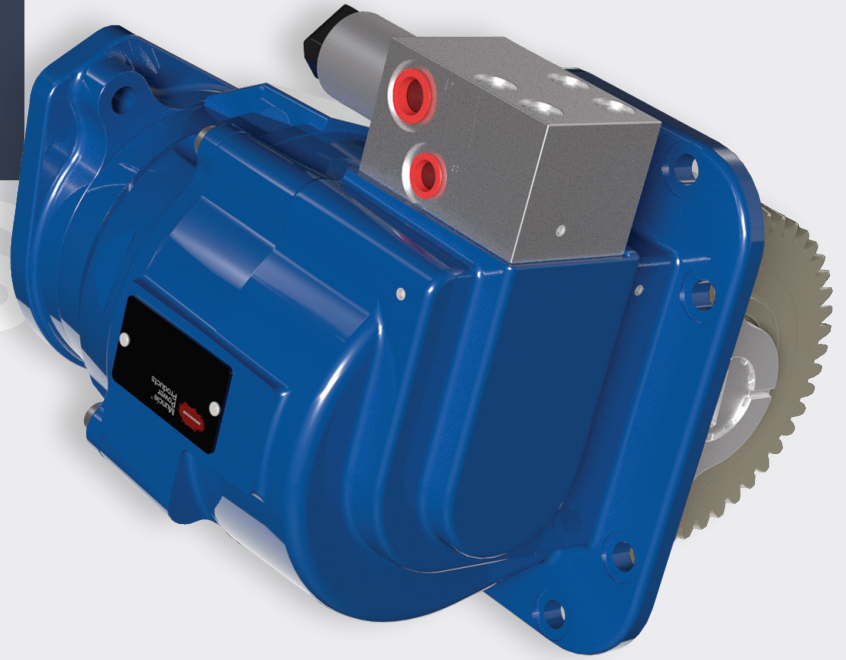


AM

00 | 5500

0 | ZF POWERLINE

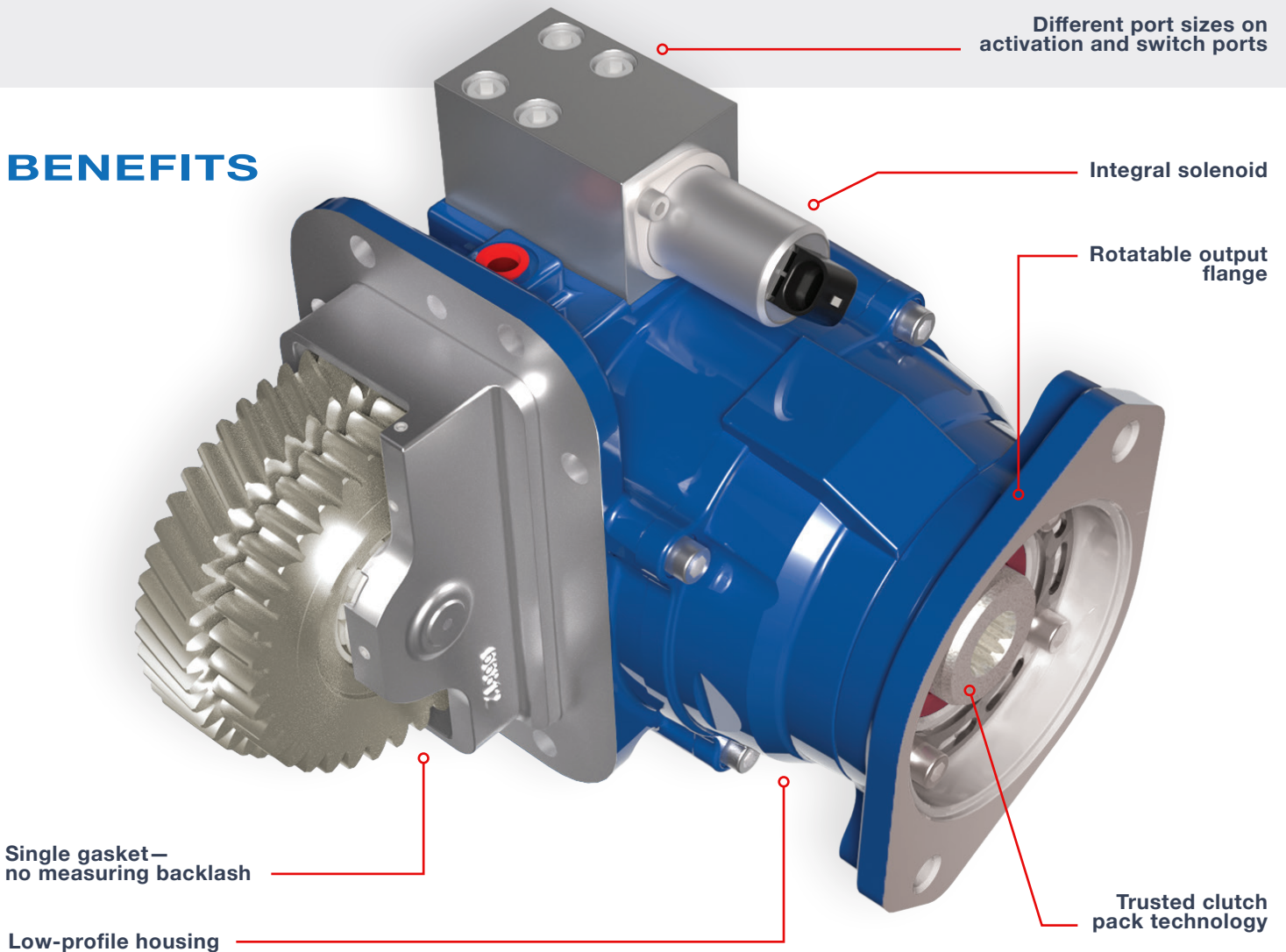
Z21 SERIES



KEY FEATURES

- Medium-duty, clutch shift PTO for TorqueFlite HD/ZF PowerLine
- Passenger-side (right-side) only on RAM applications
- Rotatable pump flange
- Single ratio option—130% of engine speed
- 265 lbs. ft. torque rating

BENEFITS



Different port sizes on activation and switch ports

Integral solenoid

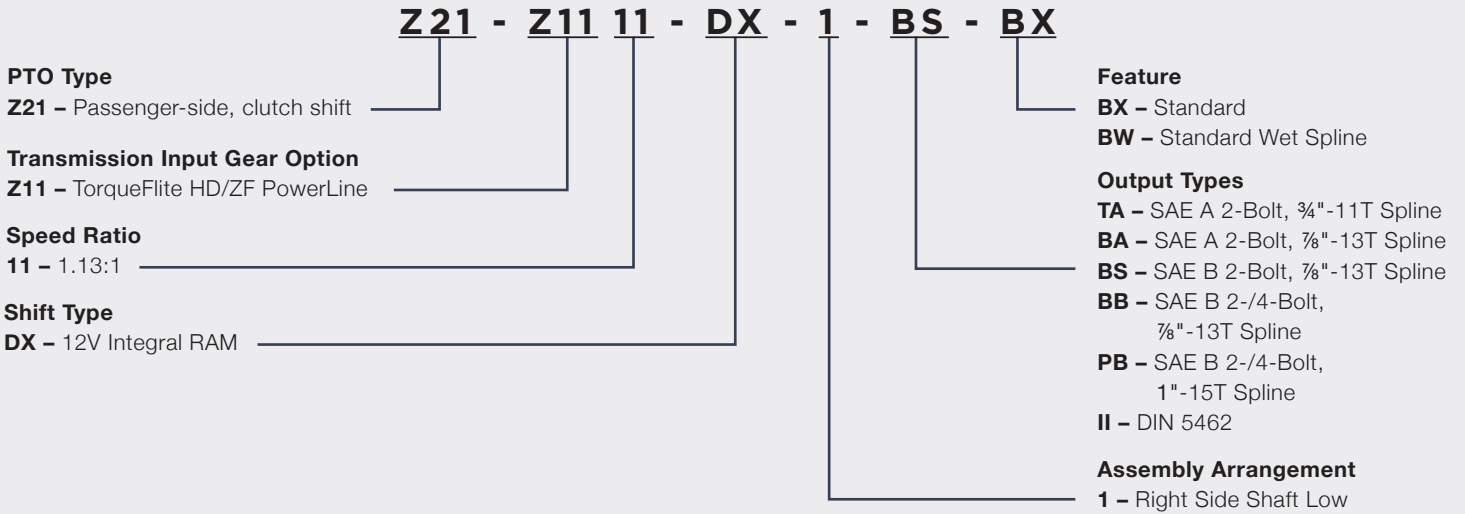
Rotatable output flange

Single gasket—no measuring backlash

Low-profile housing

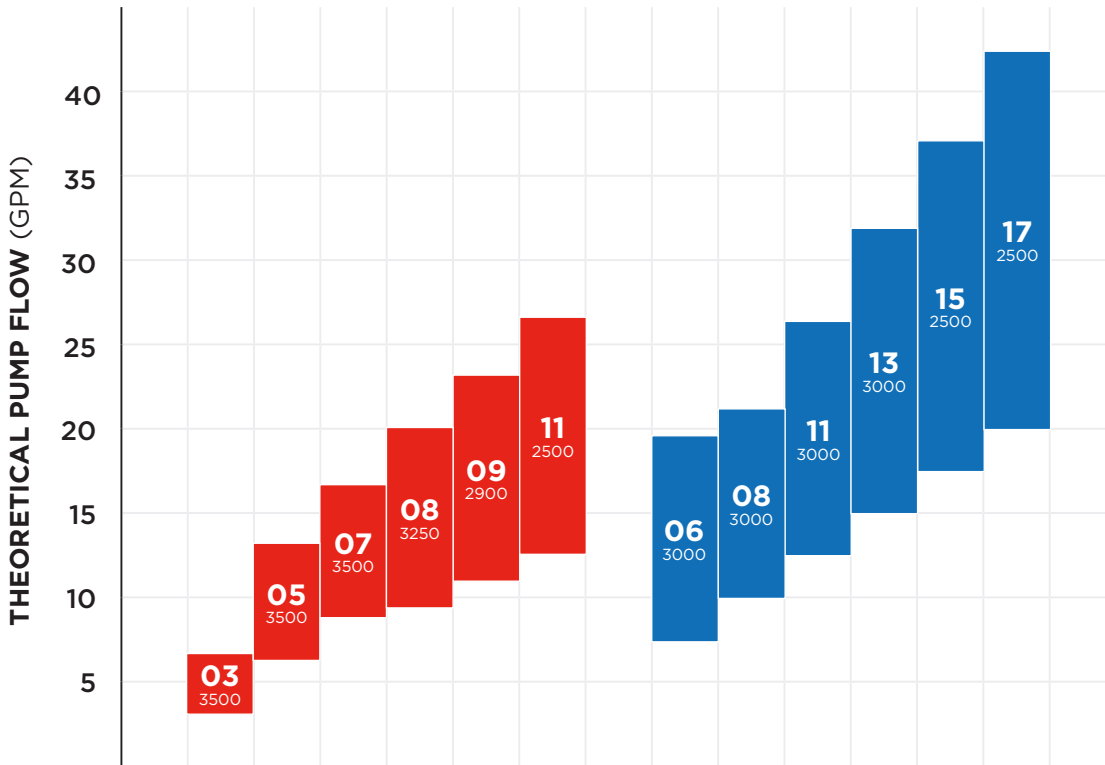
Trusted clutch pack technology

MODEL NO. CONSTRUCTION



COMPATIBLE PUMP CAPABILITIES

WHEN PAIRED WITH THE Z21 SERIES PTO



LEGEND:

Theoretical flow @ 1,900 engine RPMs →

Pump Model → **11**

Max. PSI → 2500

Theoretical flow @ 900 engine RPMs →

Example:
PH1-11

PH SERIES



PK SERIES





A Member of the Interpump Group

MI24-22 (Rev. 02-25)

201 East Jackson Street, Muncie, Indiana 47305
800-367-7867 • Fax: 765-284-6991 • info@munciepower.com
Specifications are subject to change without notice.
Visit www.munciepower.com for warranties and literature.
All rights reserved. © Muncie Power Products, Inc. (2024)