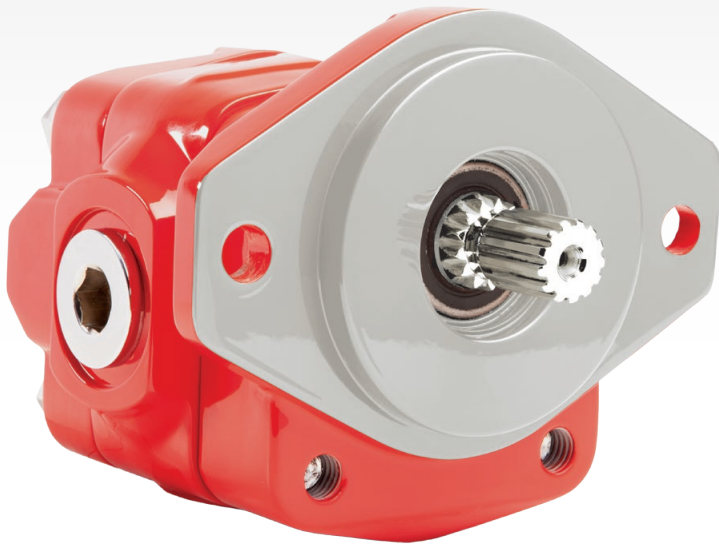


ESTABLISHED FLEXIBILITY

GEAR PUMPS/MOTORS





GEAR PUMPS/MOTORS

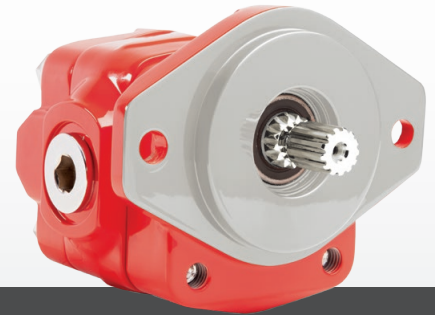
Muncie Power Products' gear pumps/motors are available in a wide variety of pump sizes and designs. With bushing design, roller bearing design and the availability to fit small to high flow rates, our pumps are designed to improve system reliability. Whether your application requires a bi-rotational feature or a belt driven clutch pump, we have the flexibility to meet your needs.



F SERIES
BUSHING STYLE PUMPS



H SERIES
BUSHING STYLE PUMPS



K SERIES
ROLLER BEARING PUMPS

The F Series aluminum bodied, thru bore bushing style pumps are offered in a wide range of sizes. With its high pressure capabilities, the F Series provides ultimate power in a small package.

Weight	7 - 10 lbs
Displacement (Cu. In./Rev)	0.24 - 2.01
Max. Op. Pressure	3,625 PSI
Input Shaft Options	2
Port Locations	Side and Rear

Brochure: MP15-16

The H Series is an all cast iron bushing pump designed for low to medium flow systems. Its small package size makes it ideal for direct mounting to PTOs.

Weight	18 - 35 lbs
Displacement (Cu. In./Rev)	0.62 - 2.48
Max. Op. Pressure	3,500 PSI
Input Shaft Options	2
Port Locations	Side and Rear

Brochure: MP15-17

The K Series is all cast iron with a roller bearing design to meet the application needs of either a pump or a motor. With four ports and a bi-rotational feature, the K Series helps reduce inventory requirements.

Weight	26 - 33 lbs
Displacement (Cu. In./Rev)	0.98 - 3.99
Max. Op. Pressure	3,000 PSI
Input Shaft Options	4
Port Locations	Side and Rear

Brochure: MP15-12

DON'T WAIT. FIND THE PUMP THAT'S RIGHT FOR YOU TODAY.



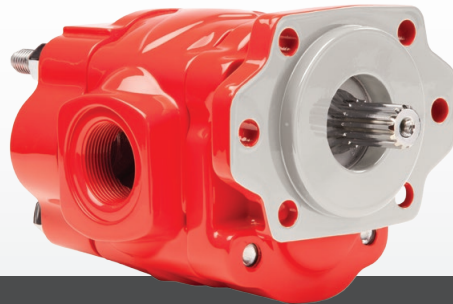
INTERACTIVE PUMP DESIGNER

Visit our interactive specification tool and find the pump model that best suits your application needs. Our pump designer allows you to select the pump size needed for your flow requirements and apply the necessary options to obtain a model number for easy ordering.

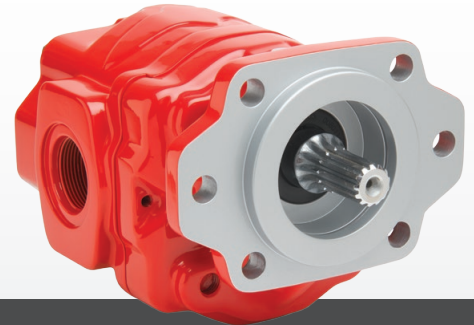
www.munciepower.com/mpower



**H/K SERIES
CLUTCH MOUNT PUMPS**



**L SERIES
ROLLER BEARING PUMPS**



**OPTIMUM SERIES
HIGH-PERFORMANCE PUMPS**

Clutch pumps provide hydraulic power at the flip of a switch when a PTO aperture is unavailable or difficult to access. Although normally belt driven, clutch pumps may also be shaft driven from the engine crankshaft.

The L Series is all cast iron with a roller bearing design to meet the application needs of either a pump or a motor. With four ports and a bi-rotational feature, the L Series helps reduce inventory requirements.

Optimum™ Series gear pumps/motors are designed for durability and long life with high pressure capabilities. A full-featured design allows for reduced inventory requirements and installation flexibility.

Weight	34 - 56 lbs
Displacement (Cu. In./Rev)	0.61 - 2.48
Max. Op. Pressure	3,625 PSI
Input Shaft Options	N/A
Port Locations	Side and Rear

Brochure: MP15-18

Weight	40 - 51 lbs
Displacement (Cu. In./Rev)	3.18 - 7.0
Max. Op. Pressure	3,000 PSI
Input Shaft Options	5
Port Locations	Side and Rear

Brochure: MP15-11

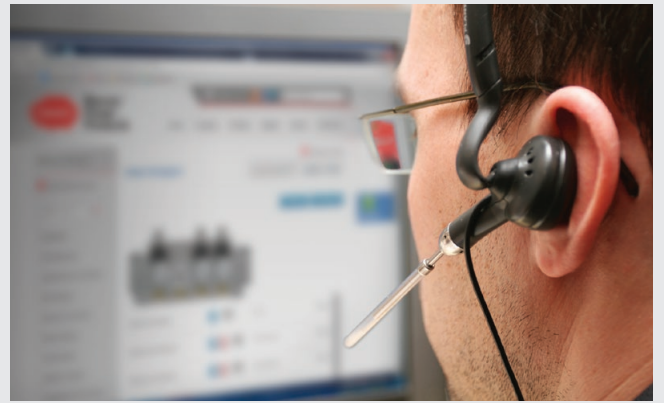
Weight	41 - 102 lbs
Displacement (Cu. In./Rev)	1.45 - 14.39
Max. Op. Pressure	4,350 PSI
Input Shaft Options	3 - 5
Port Locations	Side and Rear

Brochure: MM15-06

WE BUILD TRUST.

At Muncie, we understand
that we're building much more
than hydraulic components.

We are building trust.



NEED HELP?

Please contact our customer service team for product related questions, or visit online for additional product information, literature, stocking locations and more.

800.367.7867 www.munciepower.com

POWER TAKE-OFFS - PUMPS - CYLINDERS - VALVES - RESERVOIRS - HOSES - FITTINGS - FILTERS



MUNCIE POWER PRODUCTS
A MEMBER OF THE INTERPUMP GROUP

201 EAST JACKSON STREET - POST OFFICE BOX 548 - MUNCIE, INDIANA 47308 USA - 800.367.7867 - WWW.MUNCIEPOWER.COM