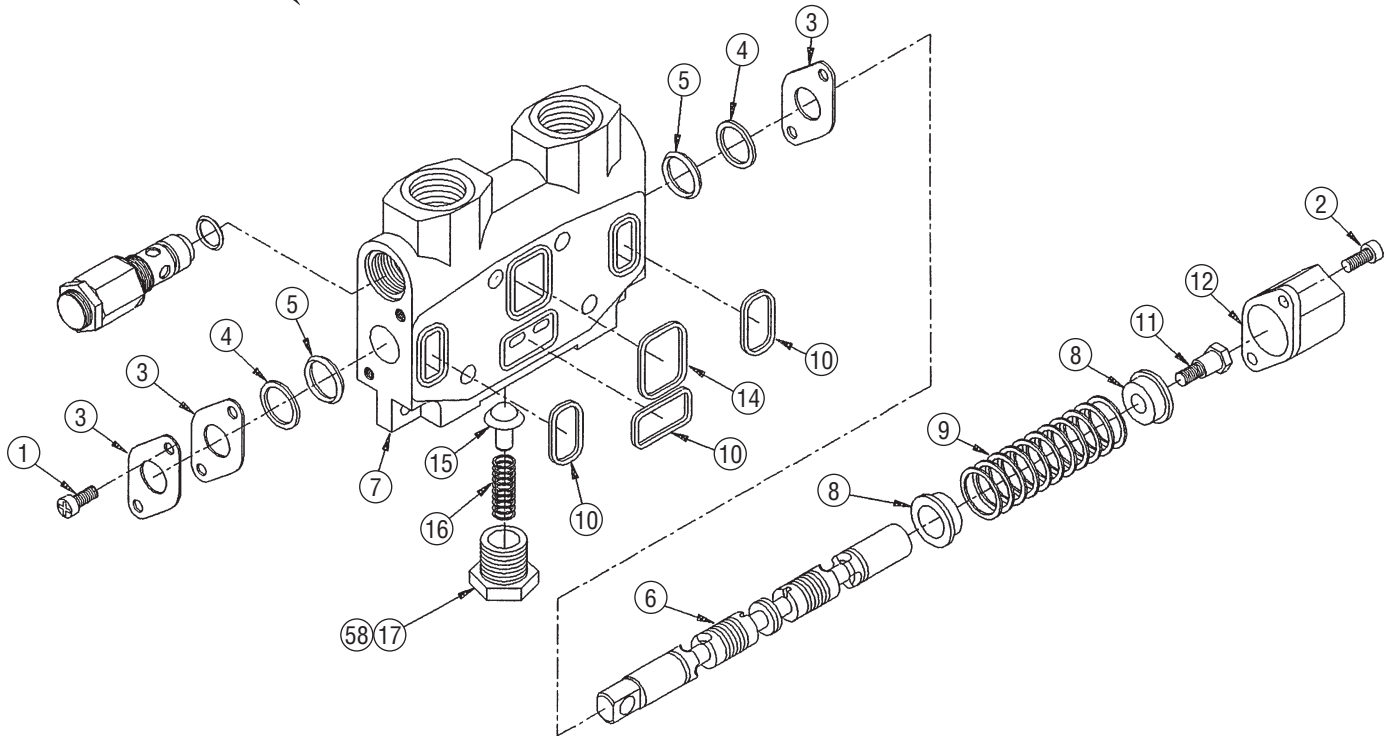




# 60V SERIES DIRECTIONAL CONTROL VALVES SERVICE PARTS LIST



## PARTS LIST AND DESCRIPTION

ITEM	QTY	PART NUMBER	DESCRIPTION
<b>WORK SECTION ASSEMBLY</b>			
1	2	60V-1433-015	Retainer Plate Screw (1/2")
2	2	60V-1433-020	Backcap Screw (3/4")
3	3	60V-2183-001	Retainer Plate
4	2	60V-2681-378	Backup Ring
5	2	PS-1214V	Spool Seal
6	1	60V-1873-067	Spool D
		60V-1873-075	Spool P
		60V-1873-071	Spool C
7	1	N/A	Valve Housing
8	2	PS-1239V	Spring Guide
9	1	60V-3581-608	Centering Spring
11	1	60V-1432-022	Stripper Bolt
12	1	60V-6000-100	Backcap
<b>CHECK VALVE ASSEMBLY</b>			
15	1	60V-2481-069*	Check Valve Poppet
16	1	60V-3581-713*	Check Spring
17	1	60V-0581-044*	Check Valve Cap
		60V-2281-015	Check Valve Cap (C Spool)
58	1	60V-2881-204*	O-Ring
<b>PLUGS</b>			
N/S		HHBP-16	O.D.T. Plug (-16)
N/S		HHPP-16	N.P.T. Plug (-16)
N/S		HHBP-12	O.D.T. Plug (-12)
N/S		HHPP-12	N.P.T. Plug (-12)
<b>SECTION SEAL O-RINGS</b>			
10	3	60V-2881-206	Seal
14	1	60V-2881-200	Seal

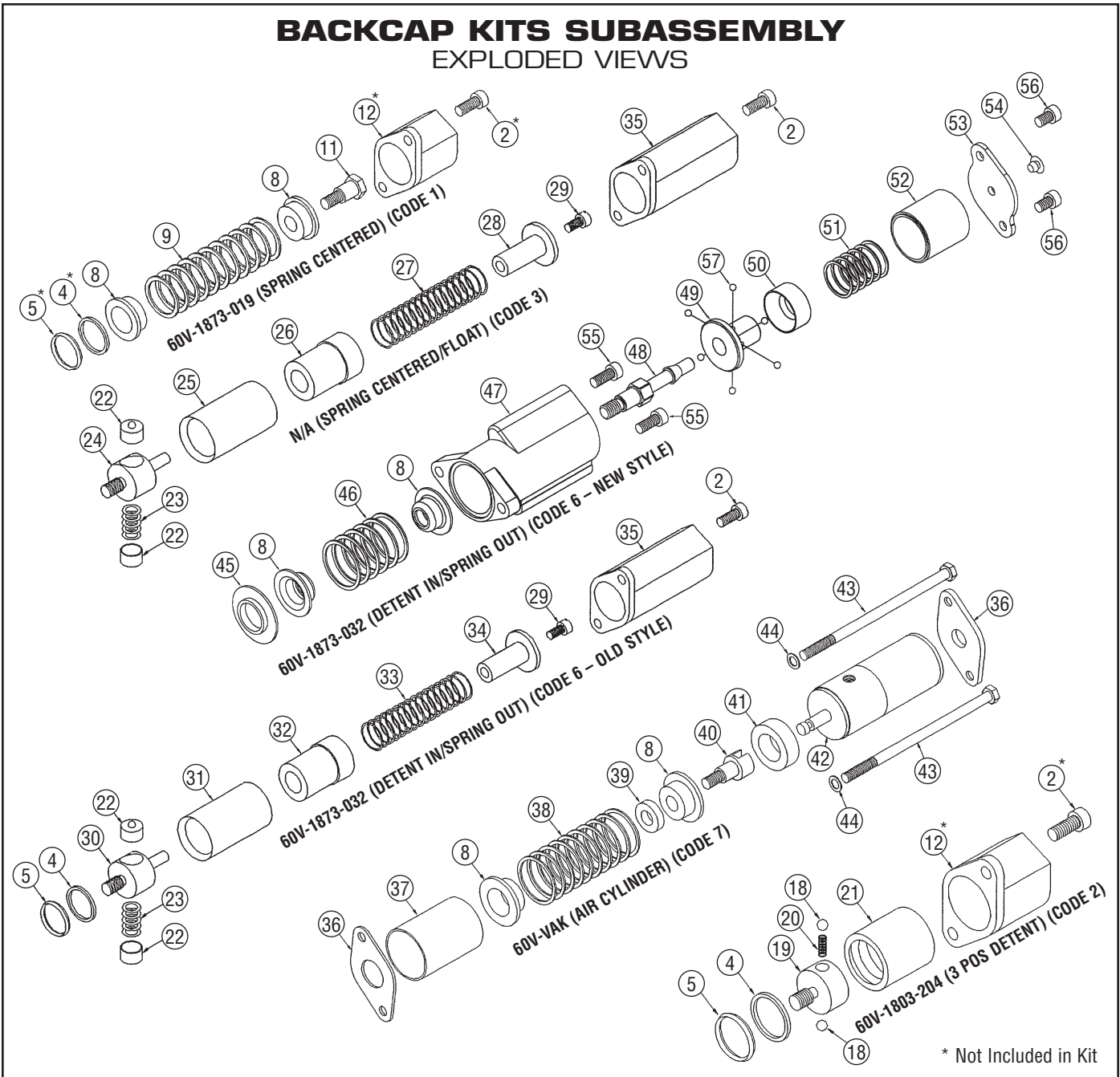
\* Not used with C Spool

ITEM	QTY	PART NUMBER	DESCRIPTION
<b>INLET RELIEF VALVE SEALS</b>			
N/S	2	60V-2881-332	O-Ring
N/S	1	60V-2881-156	O-Ring
N/S	1	60V-2681-163	Backup Ring
N/S	1	60V-1583-013	Gasket Washer
<b>WORK PORT RELIEF VALVE SEALS</b>			
N/S	1	60V-2881-204	O-Ring
N/S	1	60V-2881-333	O-Ring
N/S	1	60V-2681-349	Backup Ring
N/S	1	60V-2881-246	O-Ring
N/S	1	60V-2881-801	Internal O-Ring
<b>OUTLETS</b>			
N/S	1	60VP03Y	N.P.T.- Powerbeyond
N/S	1	60VP03T	N.P.T.-Tank Ports
N/S	1	60VS02Y	SAE O.D.T.-Powerbeyond
N/S	1	60VS03T	SAE O.D.T.-Tank Ports
N/S	1	60VS03Y	SAE O.D.T.-Powerbeyond
<b>INLETS</b>			
N/S	1	60VS03F	SAE O.D.T. w/o R.V.
N/S	1	60VP03F	N.P.T. w/o R.V.
<b>MID INLETS</b>			
N/S	1	60VP5MS0F	N.P.T.- Split Flow w/o R.V.
N/S	1	60VP5MC0F	N.P.T. - Combine Flow w/o R.V.
N/S	1	60VS5MS0F	SAE O.D.T. - Split Flow w/o R.V.
N/S	1	60VS5MC0F	SAE O.D.T. - Combine Flow w/o R.V.

# MISCELLANEOUS KITS

ITEM	QTY	PART NUMBER	DESCRIPTION
<b>HANDLE KIT</b>			
N/S	1	60V-HVK-10	10" Handle Kit
N/S	1	60V-HVK-8	8" Handle Kit
N/S	1	60V-HVK-6	6" Handle Kit
<b>STUD KITS</b>			
N/S	1	60V-STD-1	Single Spool (4.12 in.)
N/S	1	60V-STD-2	Two Spool (5.88 in.)
N/S	1	60V-STD-3	Three Spool (7.62 in.)
N/S	1	60V-STD-4	Four Spool (9.38 in.)
N/S	1	60V-STD-5	Five Spool (11.12 in.)
N/S	1	60V-STD-6	Six Spool (12.80 in.)

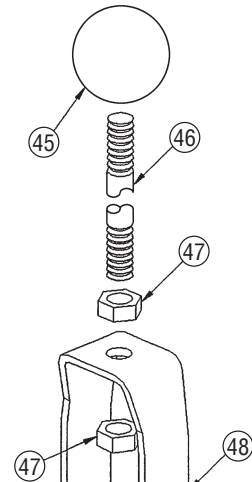
ITEM	QTY	PART NUMBER	DESCRIPTION
<b>BACK CAP KITS</b>			
N/S	1	60V-1873-019	Spring Centered Kit (Code 1)
N/S	1	60V-1803-204	3 Pos. Detent Kit (Code 2)
N/S	1	N/A	Spring Centered/Float (Code 3)
N/S	1	60V-1873-032	Detent In/Spring Out Kit (Code 6)
N/S	1	60V-VAK	Air Cylinder (Code 7)
<b>SEAL KITS</b>			
N/S	1	60V-1803-055	Seals (Bet. Sections-Items 10,14)
N/S	1	60V-1803-457	Complete Seal Kit (10,14,4,5)
N/S	1	60V-1873-039	Inlet R.V. Seal Kit
N/S	1	60V-1873-037	Work Port R.V. Seal Kit
N/S	1	60V-1873-042	Work Port R.V. w/Anti-cav Seal Kit



# BACKCAP KITS SUBASSEMBLY REFERENCE EXPLODED VIEWS ON PREVIOUS PAGE

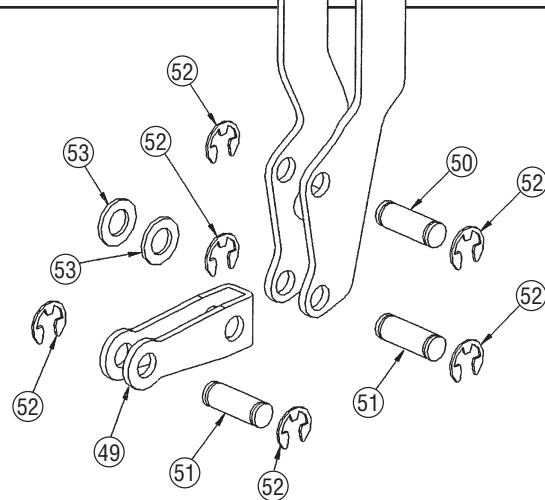
ITEM	QTY	PART NUMBER	DESCRIPTION
<b>60V-1873-019 (SPRING CENTERED KIT) (CODE 1)</b>			
8	2	PS-1239V	Spring Guide
9	1	60V-3581-608	Return Spring
11	1	60V-1432-022	Stripper Bolt
<b>60V-1803-204 (3 POS. DETENT KIT) (CODE 2)</b>			
4	1	60V-2681-007	Backup Ring
5	1	PS-1214V	Quad Spool Seal
18	2	60V-0282-010	Steel Ball
19	1	60V-2583-008	Ball Retainer
20	1	60V-3581-130	Detent Spring
21	1	60V-3283-015	Detent Sleeve
<b>N/A (SPRING CENTERED/FLOAT) (CODE 3)</b>			
2	2	60V-1433-020	Screw, Fil. Hd. (¾ Lg.)
22	2	60V-2482-005	Detent Poppet
23	1	60V-3581-171	Detent Spring
24	1	60V-2583-009	Poppet Retainer
25	1	60V-3283-018	Detent Sleeve
26	1	60V-2586-014	Spring Retainer
27	1	60V-3581-132	Return Spring
28	1	60V-2586-009	Spring Guide
29	1	60V-1435-002	Screw, Fil. Hd.
35	1	60V-6200-100	Backcap
<b>60V-1873-032 (DETENT IN/SPRING OUT KIT) (CODE 6 – NEW STYLE)</b>			
8	2	PS-1239V	Spring Guide
45	1	60V-2183-108	Locating Ring
46	1	60V-3581-608	Return Spring
47	1	60V-6400-100	End Cap Housing
48	1	60V-1401-539	Detent Bolt
49	1	60V-3283-116	Ball Carrier
50	1	60V-3283-117	Ball Retainer
51	1	60V-3581-835	Spring
52	1	60V-3384-270	Sleeve
53	1	60V-2183-225	End Plate
54	1	60V-1203-002	Grommet
55	2	60V-1402-095	Capscrew (.88 Lg)
56	2	60V-1102-094	Capscrew (.62 Lg)
57	6	60V-0505-368	Steel Ball

ITEM	QTY	PART NUMBER	DESCRIPTION
<b>60V-1873-032 (DETENT IN/SPRING OUT KIT) (CODE 6 – OLD STYLE)</b>			
2	2	60V-1433-020	Screw, Fil. Hd. (¾ Lg.)
4	1	60V-2681-007	Backup Ring
5	1	PS-1214V	Quad Spool Seal
22	2	60V-2482-005	Detent Poppet
23	1	60V-3581-171	Detent Spring
29	1	60V-1435-002	Screw, Fil. Hd.
30	1	60V-2583-009	Poppet Retainer
31	1	60V-3283-024	Detent Sleeve
32	1	60V-2586-028	Spring Retainer
33	1	60V-3581-132	Return Spring
34	1	60V-2586-014	Spring Guide
35	1	60V-6200-100	Backcap
<b>60V-VAK (AIR CYLINDER) (CODE 7)</b>			
8	2	60V-1642-013	Spring Retainer
36	1	60V-2183-197	Retainer Plate (Valve End)
	1	60V-2183-198	Retaining Plate (Thick)
37	1	60V-3384-362	Stop Tube
38	1	60V-3581-927	Return Spring
39	1	60V-3384-366	Spacer Tube
40	1	60V-1401-511	Stripper Bolt
41	1	60V-3384-365	Spacer Tube (.276 - .286)
42	1	60V-1903-398	Piston Subassembly
43	2	60V-1425-421	¼"-20 x 6.25 Lg. Capscrew
44	2	60V-3782-018	Washer



# VERTICAL HANDLE KIT SUBASSEMBLY

ITEM	QTY	PART NUMBER	DESCRIPTION
<b>60V-HVK-**</b>			
45	1	60V-0283-014	Knob, Handle
46	1	60V-1841-014	Rod, Handle (For 6" Handle Kit)
		60V-1841-015	(For 8" Handle Kit)
		60V-1841-016	(For 10" Handle Kit)
47	2	60V-1453-022	Jam Nut
48	1	60V-1841-013	Lever
49	1	60V-1841-027	Link
50	1	60V-2080-011	Clevis Pin (.91)
51	2	60V-2080-003	Clevis Pin (1.0)
52	6	60V-2681-470	Retaining Ring
53	2	60V-3782-106	Washer



## STUD SUB-ASSEMBLY

ITEM	QTY	PART NUMBER	DESCRIPTION
N/S	4	60V-3784-032	Stud Washer
N/S	4	60V-1401-496	Stud (1 Section)
N/S	4	60V-1401-497	Stud (2 Sections)
N/S	4	60V-1401-498	Stud (3 Sections)

ITEM	QTY	PART NUMBER	DESCRIPTION
N/S	4	60V-1423-004	Stud (4 Sections)
N/S	4	60V-1423-005	Stud (5 Sections)
N/S	4	60V-1423-006	Stud (6 Sections)

## CARTRIDGES - RELIEFS / ANTI-CAV

ITEM	QTY	PART NUMBER	DESCRIPTION
N/S	N/A	60V-1873-002	Inlet Relief Plug
N/S	N/A	60V-9107-035	Relief Valve (std.) (800-2,500PSI)
N/S	N/A	60V-1873-128	High Pressure R.V. (2,800-3,500PSI)
N/S	N/A	60V-9001-143	Shim Adj. W.P.R.V. (500-1,000PSI)
N/S	N/A	60V-9002-143	Shim Adj. W.P.R.V. (1,000-2,500PSI)

ITEM	QTY	PART NUMBER	DESCRIPTION
N/S	N/A	60V-9001-164	Anti-Cav Cartridge
N/S	N/A	60V-9001-115	Anti-Cav Cartridge w/Screw Adj - R.V. (500-2,500PSI)
N/S	N/A	60V-2283-075	Work Port Relief Plug
N/S	N/A	PS-1231-13V	Relief Valve Shim .005
N/S	N/A	PS-1231-14V	Relief Valve Shim .015
N/S	N/A	PS-1231-15V	Relief Valve Shim .062

## ACCESSORIES - RESTRICTORS

ITEM	QTY	PART NUMBER	DESCRIPTION
N/S	N/A	60V-0882-025	Port Restrictor -12 ODT (Blank) Controlled Flow into Valve, Free Flow out
N/S	N/A	60V-0882-109	Port Restrictor -12 ODT (.062) Controlled Flow out of Valve, Free Flow in

