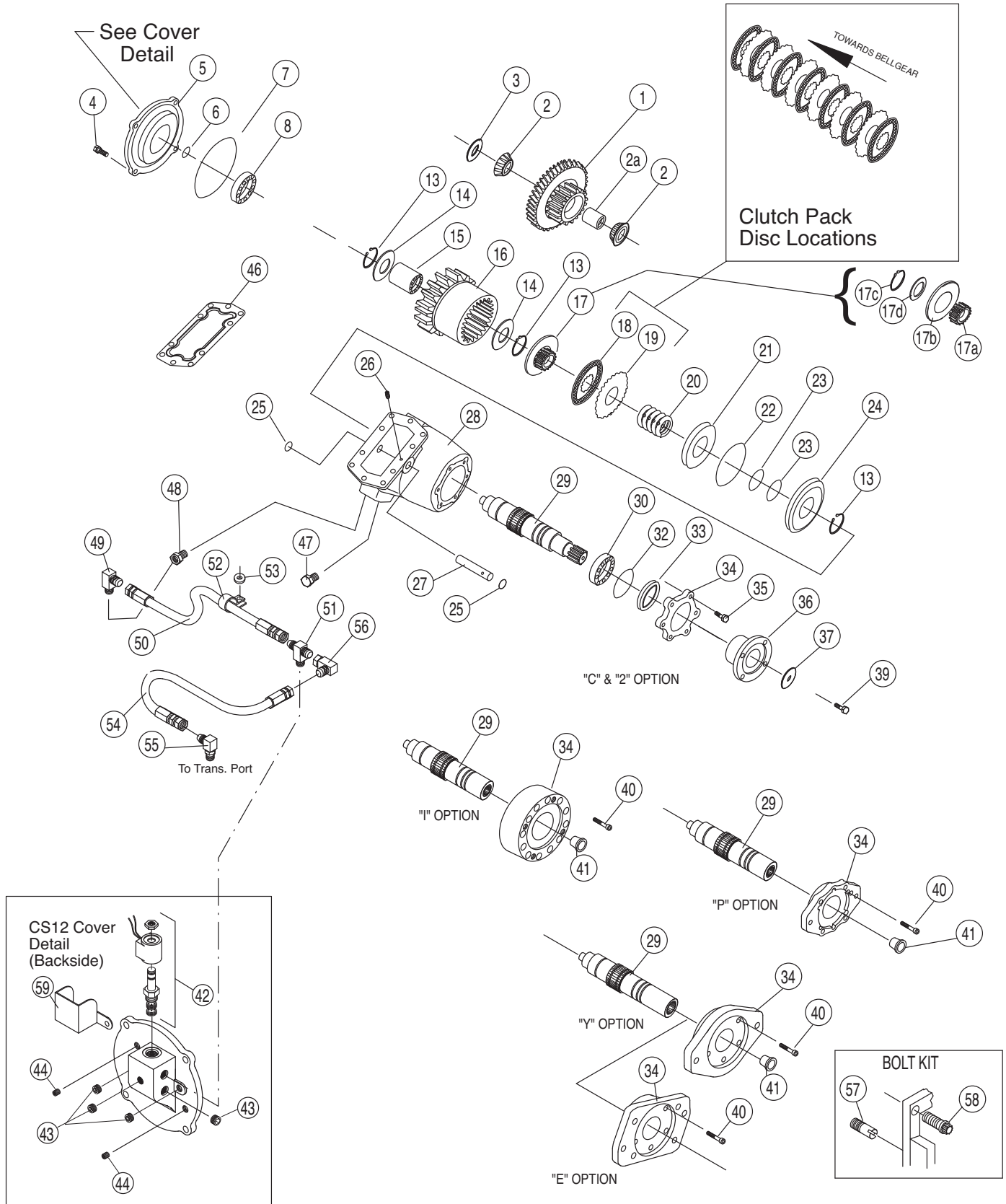




CS12 SERIES CLUTCH SHIFT PTO

SERVICE PARTS LIST



PARTS LIST AND DESCRIPTION

| ITEM | QTY | PART NUMBER | DESCRIPTION | ITEM | QTY | PART NUMBER | DESCRIPTION |
|------|-----|-------------------|--|------|-----|-------------|---|
| 1 | 1 | 03T36214 | Input Gear (05) (50/27) | 19 | 6 | 49T38230 | Spacer Disc |
| | | 03T36215 | Input Gear (06) (50/29) | 20 | 1 | 27T36112 | Spring |
| | | 03T36216 | Input Gear (07) (50/31) | 21 | 1 | 49T36114 | Piston |
| | | 03T36217 | Input Gear (08) (50/34) | 22 | 1 | 12T36054 | O Ring |
| | | 03T36218 | Input Gear (10) (50/36) | 23 | 2 | 12T36053 | O Ring |
| 2 | 2 | 10T35776 | Input Bearing | 24 | 1 | 49T38394 | Piston Cup |
| 2a | 1 | BELOW AS REQUIRED | | 25 | 2 | 12T35774 | O Ring |
| | | 18T38534 | Cone Spacer | 26 | 1 | 19T35785 | Set Screw |
| | | 18T38535 | Cone Spacer | 27 | 1 | 07T35780 | Idler Shaft |
| | | 18T38536 | Cone Spacer | 28 | 1 | 01T36204 | Housing (1 Arrangement) |
| | | 18T38537 | Cone Spacer | | | 01T36202 | Housing (3 Arrangement) |
| | | 18T38538 | Cone Spacer | 29 | 1 | 06T37933 | Output Shaft "C, 2, X" 1-1/2 10 SPL |
| | | 18T38539 | Cone Spacer | | | 06T37935 | Output Shaft "E, Y, Z" 1-1/4 14 SPL |
| | | 18T38540 | Cone Spacer | | | 06T37936 | Output Shaft "I" 36mm 8 SPL |
| | | 18T38590 | Cone Spacer | | | 06T37937 | Output Shaft "P" 1"-15 SPL |
| | | 18T38591 | Cone Spacer | 30 | 1 | 10T35775 | Output Bearing |
| | | 18T38592 | Cone Spacer | 31 | 1 | 26T01627 | Woodruff Key |
| 3 | 1 | BELOW AS REQUIRED | | 32 | 1 | 12T36863 | O Ring |
| | | 18T35781 | Shim | 33 | 1 | 11T37795 | Seal |
| | | 18T35782 | Shim | 34 | 1 | 15T39226 | Bearing Cover, Open "2", "C" & "X" |
| | | 18T35783 | Shim | | | 14T35767 | Hyd Flange "P" & "Z" |
| | | 18T36229 | Shim | | | 14T35769 | Hyd Flange "E" |
| | | 18T36230 | Shim | | | 14T36007 | Hyd Flange "Y" |
| | | 18T37151 | Shim | | | 14T36834 | Hyd Flange "I" |
| | | 18T37152 | Shim | 35 | 6 | 19T32740 | Capscrew "C" & "2" |
| | | 18T37153 | Shim | 36 | 1 | 14T31499 | Companion Flange "C" |
| | | 18T38725 | Shim | | | 14T37498 | DIN Companion Flange "2" |
| | | 18T38726 | Shim | 37 | 1 | 21T20092 | Washer ("C" & "2" Only) |
| | | 18T38727 | Shim | 39 | 1 | 19T38266 | Capscrew ("C" & "2" Only) |
| | | 18T38728 | Shim | 40 | 6 | 19T39257 | Socket Capscrew "P" Hyd |
| | | 18T38729 | Shim | | | 19T31577 | Socket Capscrew "E" & "Y" Hyd |
| | | 18T38730 | Shim | | | 19T35386 | Socket Capscrew "I" Hyd |
| | | 18T38731 | Shim | 41 | 1 | 25T35936 | Cap Plug "E", "I", & "Y" (Storage Only) |
| 4 | 4 | 19M38100 | Capscrew | | | 25T35725 | Cap Plug "P" (Storage Only) |
| 5 | 1 | 15T36206 | Bearing Cover, Closed | 42 | 1 | 35T36092 | Solenoid (12v) |
| 6 | 1 | 12T36081 | O Ring | | | 35T36447A | Solenoid (24v) |
| 7 | 1 | 12T36207 | O Ring | 43 | 4 | 25T21684 | Pipe Plug |
| 8 | 1 | 10T35994 | Bearing | 44 | 2 | 19T36174 | Set Screw |
| 13 | 3 | 24T39926 | Snap Ring | 46 | 1 | 13T35777 | Gasket |
| 14 | 2 | 10T35989 | Thrust Race | 47 | 1 | 25T35999 | Plug |
| 15 | 1 | 10T35991 | Bearing | 48 | 1 | 25T35784 | Orifice |
| 16 | 1 | 02T36219 | Bell Gear (05) (47T) | 49 | 1 | 43T35867 | Elbow |
| | | 02T36220 | Bell Gear (06) (45T) | 50 | 1 | 45T35865 | Hose |
| | | 02T36221 | Bell Gear (07) (43T) | 51 | 1 | 43T36231 | Tee |
| | | 02T36222 | Bell Gear (08) (40T) | 52 | 1 | 49T36283 | Hose Clamp |
| | | 02T36223 | Bell Gear (10) (38T) | 53 | 1 | 21T36448 | Washer |
| 17 | 1 | 49TA4136 | Clutch Hub Assembly Includes: 17a, 17b, & 17c | 59 | 1 | 49T36493 | Protector |
| 17a | 1 | 49T37920 | Hub | N.S. | 1 | 48TK3900 | Installation Kit (12 volt) Includes: Shift Kit 48TK3882, Gasket Pack 52MK1010, Stud Kit 20MK1001, Std. Hose Kit 43TK3881 |
| 17b | 1 | 49T37921 | Clutch Flange | | | | |
| 17c | 1 | 24T37951 | Snap Ring | | | | |
| 17d | 1 | 10T37930 | Thrust Washer | | | | |
| 18 | 7 | 49T38231 | Friction Disc | | | | |



**Muncie[®]
Power
Products**

SP01-01 (Rev. 11-09) Printed in the U.S.A.
© Muncie Power Products, Inc. 2009

Muncie Power Products, Inc. Member of the Interpump Hydraulics Group
General Offices and Distribution Center • P.O. Box 548 • Muncie, IN 47308-0548
(765) 284-7721 • FAX (765) 284-6991 • E-mail info@munciepower.com
Web site <http://www.munciepower.com>

Drive Products, Exclusive Agents for Canada, ISO Certified by an Accredited Registrar

