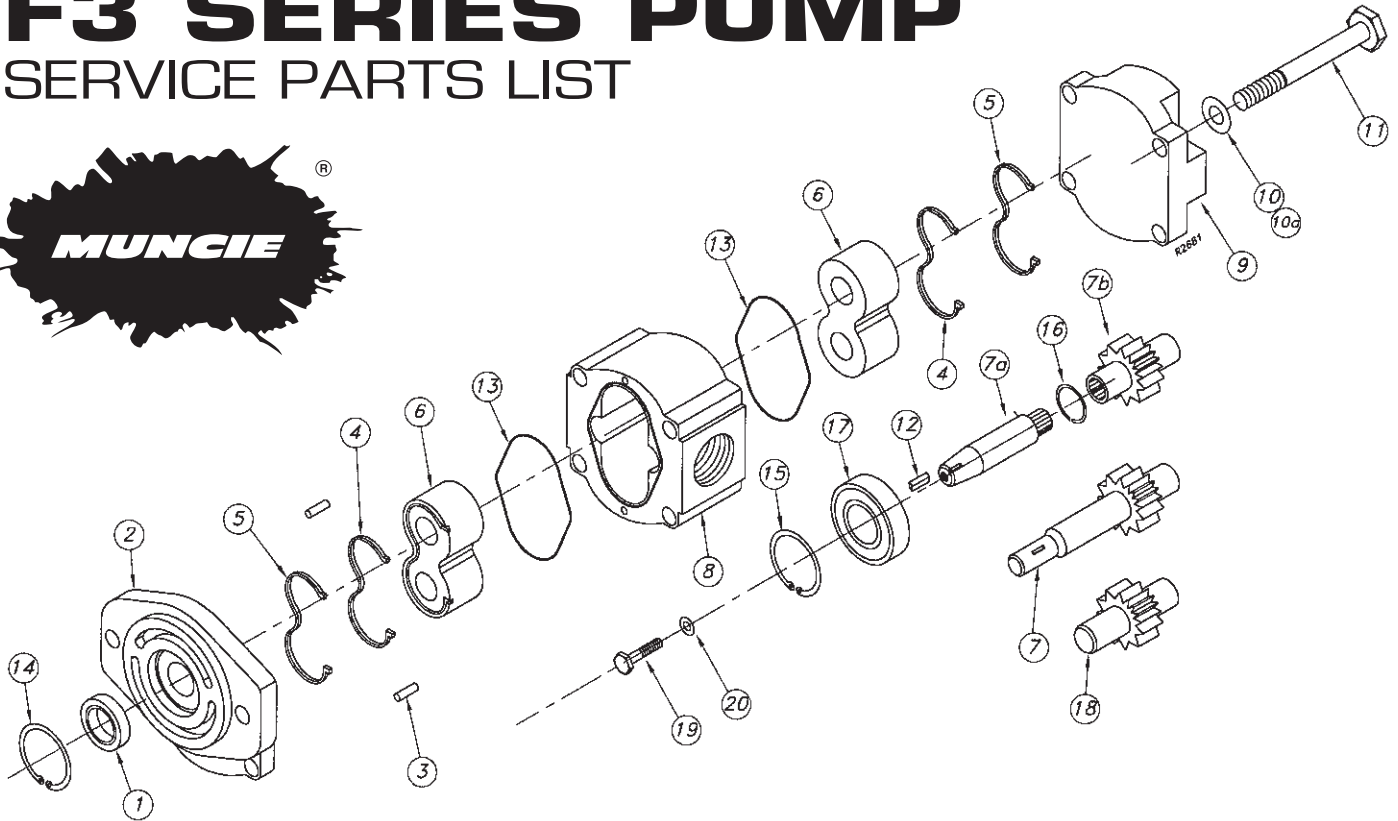


F3 SERIES PUMP

SERVICE PARTS LIST



PARTS LIST AND DESCRIPTION

ITEM	DESCRIPTION	QTY	MUNCIE NUMBER
1	Shaft Seal	1	PF3-1005
	Shaft Seal (clutch pump)	1	PF3-1005C
2	Front Cover (SAE A)	1	PF3-1007
	Front Cover (Q thru-Bolt)	1	PF3-1007Q
	Front Cover SAE A Clutch Pump	1	PF3-1007-AC
3	Dowel Pin	2	PF1-1024
4	Channel Seal	2	PF3-1008
5	Backup Seal	2	PF3-1009
6	Thrust Block/Bushing	2	PF3-1013
7	Drive Gear ($\frac{5}{8}$ 9-T)	1	
	1.07 GPM		PF3-1016S-107
	1.60 GPM		PF3-1016S-160
	2.12 GPM		PF3-1016S-212
	2.64 GPM		PF3-1016S-264
	2.90 GPM		PF3-1016S-290
	3.68 GPM		PF3-1016S-368
	4.24 GPM		PF3-1016S-424
	5.02 GPM		PF3-1016S-502
	6.06 GPM		PF3-1016S-606
	7.14 GPM		PF3-1016S-714
	8.18 GPM		PF3-1016S-818
	8.70 GPM		PF3-1016S-870
7	Drive Gear ($\frac{5}{8}$ Round)	1	
	1.07 GPM		PF3-1016K-107
	1.60 GPM		PF3-1016K-160
	2.12 GPM		PF3-1016K-212
	2.64 GPM		PF3-1016K-264
	2.90 GPM		PF3-1016K-290
	3.68 GPM		PF3-1016K-368
	4.24 GPM		PF3-1016K-424
	5.02 GPM		PF3-1016K-502
	6.06 GPM		PF3-1016K-606
	7.14 GPM		PF3-1016K-714
	8.18 GPM		PF3-1016K-818
	8.70 GPM		PF3-1016K-870

ITEM	DESCRIPTION	QTY	MUNCIE NUMBER
7	Drive Gear ($\frac{3}{4}$ 11-T)	1	
	1.07 GPM		PF3-1016S16-107
	1.60 GPM		PF3-1016S16-160
	2.12 GPM		PF3-1016S16-212
	2.64 GPM		PF3-1016S16-264
	2.90 GPM		PF3-1016S16-290
	3.68 GPM		PF3-1016S16-368
	4.24 GPM		PF3-1016S16-424
	5.02 GPM		PF3-1016S16-502
	6.06 GPM		PF3-1016S16-606
	7.14 GPM		PF3-1016S16-714
	8.18 GPM		PF3-1016S16-818
	8.70 GPM		PF3-1016S16-870
7A	Input Shaft (Clutch Pump)	1	PF3-1016T
7B	Drive Gear (Clutch pump)	1	
	1.86 GPM		PF3-1016-186
	2.64 GPM		PF3-1016-264
	3.15 GPM		PF3-1016-315
	3.68 GPM		PF3-1016-368
	4.44 GPM		PF3-1016-444
	5.15 GPM		PF3-1016-515
	5.80 GPM		PF3-1016-580
	7.53 GPM		PF3-1016-753
8	Pump Housing "Ported (O.D.T. -12, -10)"	1	
	1.07 GPM		PF3-1025-107S
	1.60 GPM		PF3-1025-160S
	2.12 GPM		PF3-1025-212S
	2.64 GPM		PF3-1025-264S
	2.90 GPM		PF3-1025-290S
	3.68 GPM		PF3-1025-368S
	4.24 GPM		PF3-1025-424S
	5.02 GPM		PF3-1025-502S
	6.06 GPM		PF3-1025-606S
	7.14 GPM		PF3-1025-714S
	8.18 GPM		PF3-1025-818S
	8.70 GPM		PF3-1025-870S

Continued on back

PARTS LIST AND DESCRIPTION

ITEM	DESCRIPTION	QTY	MUNCIE NUMBER
8	Pump Housing "Ported (O.D.T. -16, -10)"	1	
	1.07 GPM		PF3-1025-107S2
	1.60 GPM		PF3-1025-160S2
	2.12 GPM		PF3-1025-212S2
	2.64 GPM		PF3-1025-264S2
	2.90 GPM		PF3-1025-290S2
	3.68 GPM		PF3-1025-368S2
	4.24 GPM		PF3-1025-424S2
	5.02 GPM		PF3-1025-502S2
	6.06 GPM		PF3-1025-606S2
	7.14 GPM		PF3-1025-714S2
	8.18 GPM		PF3-1025-818S2
	8.70 GPM		PF3-1025-870S2
8	Pump Housing - No Ports		
	1.07 GPM		PF3-1025-107
	1.60 GPM		PF3-1025-160
	2.12 GPM		PF3-1025-212
	2.64 GPM		PF3-1025-264
	2.90 GPM		PF3-1025-290
	3.68 GPM		PF3-1025-368
	4.24 GPM		PF3-1025-424
	5.02 GPM		PF3-1025-502
	6.06 GPM		PF3-1025-606
	7.14 GPM		PF3-1025-714
	8.18 GPM		PF3-1025-818
	8.70 GPM		PF3-1025-870
8	Pump Housing - Clutch Pumps		
	1.86 GPM		PF3-1025-186S
	2.64 GPM		PF3-1025-264S
	3.15 GPM		PF3-1025-315S
	3.68 GPM		PF3-1025-368S
	4.44 GPM		PF3-1025-444S2
	5.15 GPM		PF3-1025-515S2
	5.80 GPM		PF3-1025-580S2
	7.53 GPM		PF3-1025-753S2
9	Rear Cover (O.D.T. ports)	1	PF1-1026S
	Rear Cover (no ports - .71 thk)		PF1-1026A
	Rear Cover (no ports - 1.18 thk)		PF1-1026
10	Washer-Flat (Std Assy)	4	PF1-1029
	Washer-Flat (Q Flange Assy)	2	PF1-1029
10	Washer-per thru Bolt (Q Flange)		
	1.07 GPM	4	21T39928
	1.60 GPM	2	21T39928
	2.12 GPM	4	21T39928
	2.64 GPM	6	21T39928
	2.90 GPM	4	21T39928
	3.68 GPM	4	21T39928
	4.24 GPM	2	21T39928
	5.02 GPM	4	21T39928
	6.06 GPM	4	21T39928
	7.14 GPM	4	21T39928
	8.18 GPM	4	21T39928
	8.70 GPM	2	21T39928
10A	Washer-Lock (Q Flange)	2	21T20526
11*	Assy Bolt (Std Assy) 4 or 2 (Q Flange)		
	1.07 GPM		PF1-1028-652
	1.60 GPM		PF1-1028-212
	2.12 GPM		PF3-1028-855
	2.64 GPM		PF1-1028-264
	2.90 GPM		PF3-1028-856
	3.68 GPM		PF1-1028-368
	4.24 GPM		PF1-1028-424
	5.02 GPM		PF1-1028-502
	6.06 GPM		PF1-1028-606
	7.14 GPM		PF3-1028-861

ITEM	DESCRIPTION	QTY	MUNCIE NUMBER
11* <i>cont.</i>	8.18 GPM		PF1-1028-818
	8.70 GPM		PF3-1028-612
11*	Q Flange thru Bolt	2	
	1.07 GPM		19M38400
	1.60 GPM		19M38400
	2.12 GPM		19M38425
	2.64 GPM		19M38450
	2.90 GPM		19M38450
	3.68 GPM		19M38475
	4.24 GPM		19M38475
	5.02 GPM		19M38500
	6.06 GPM		19M38525
	7.14 GPM		19M38550
	8.18 GPM		19M38575
	8.70 GPM		19M38575
11*	Assy Bolt (Clutch Pump)	4	
	1.86 GPM		PF1-1028-212
	2.64 GPM		PF1-1028-264
	3.15 GPM		PF1-1028-368
	3.68 GPM		PF3-1028-857
	4.44 GPM		PF1-1028-424
	5.15 GPM		PF1-1028-502
	5.80 GPM		PF1-1028-606
	7.53 GPM		PF1-1028-818
12	Key	1	PF1-1017
	Key (Clutch Pump)	1	PH-1017-W
13	Housing Seal	2	PF3-1012
14	Snap Ring (Shaft Seal)	1	PF3-1003
15	Snap Ring (CI Pump Seal)	2	PF3-1004
16	Snap Ring (CI Pump Shaft)	1	PF3-1035
17	Outboard Brng (CI Pump)	1	PF3-1002
18	Driven Gear (Std Pumps)	1	
	1.07 GPM		PF3-1023-107
	1.60 GPM		PF3-1023-160
	2.12 GPM		PF3-1023-212
	2.64 GPM		PF3-1023-264
	2.90 GPM		PF3-1023-290
	3.68 GPM		PF3-1023-368
	4.24 GPM		PF3-1023-424
	5.02 GPM		PF3-1023-502
	6.06 GPM		PF3-1023-606
	7.14 GPM		PF3-1023-714
	8.18 GPM		PF3-1023-818
	8.70 GPM		PF3-1025-870
18	Driven Gear (CI Pumps)	1	
	1.86 GPM		PF3-1023-186
	2.64 GPM		PF3-1023-264
	3.15 GPM		PF3-1023-315
	3.68 GPM		PF3-1023-368
	4.44 GPM		PF3-1023-444
	5.15 GPM		PF3-1023-515
	5.80 GPM		PF3-1023-580
	7.53 GPM		PF3-1023-753
19**	Clutch Bolt	1	19T38756
20	Clutch Washer	1	21M23487
N.S.	-12 O.D.T. Plug	1	HHBP-12
N.S.	-10 O.D.T. Plug	1	HHBP-10
N.S.	-16 O.D.T. Plug	1	HHBP-16
	* Torque to 38 ft.lbs.		
	** Torque to 15 ft.lbs.		
	Seal Kit: GSKPF3 (Includes items 1, 4, 5, & 13)		
	Seal Kit Clutch Pump: GSKPF3C (Includes items 1, 4, 5, & 13)		
	Rebuild kit: Not available		



**Muncie®
Power
Products**