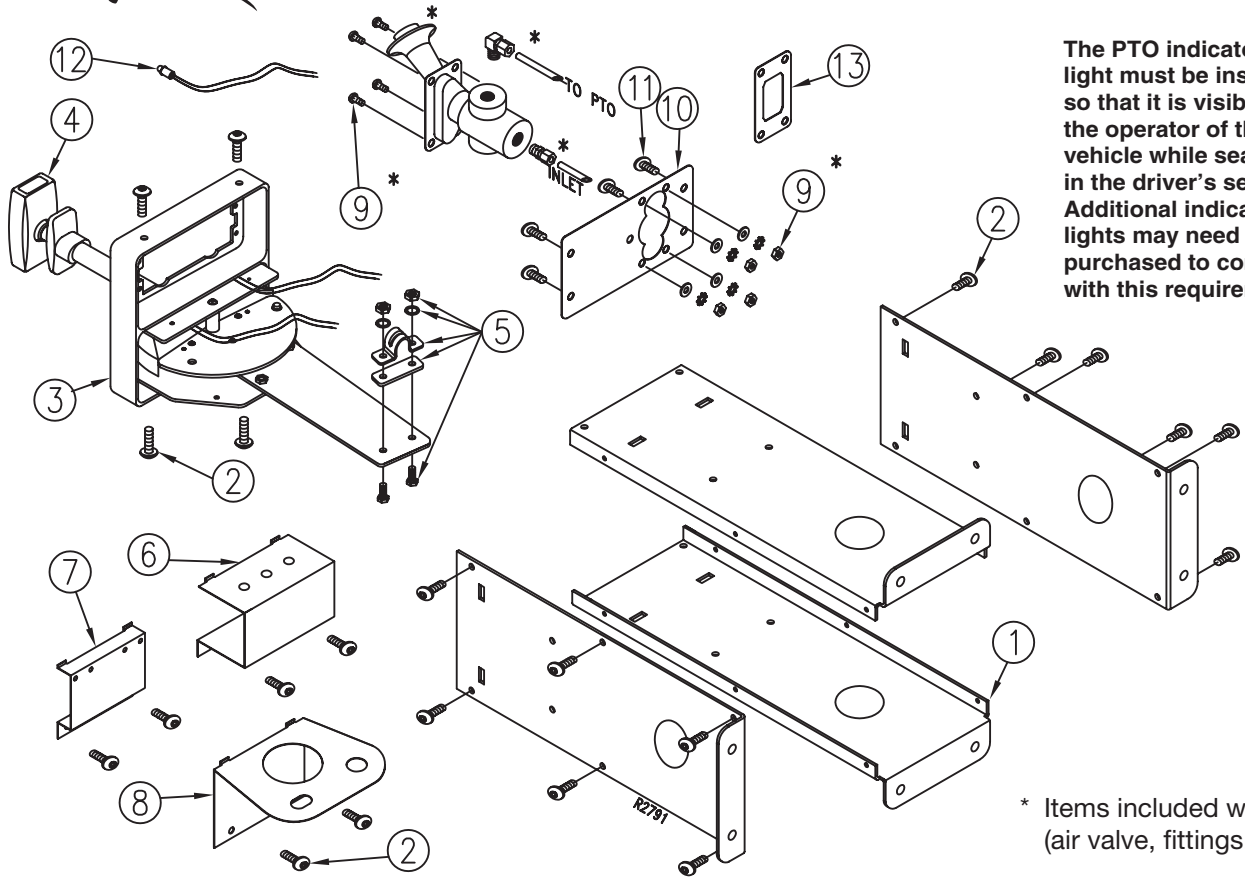




DPC2 SERIES DUMP PUMP CONSOLE

INSTALLATION INSTRUCTIONS AND SERVICE PARTS LIST



The PTO indicator light must be installed so that it is visible to the operator of the vehicle while seated in the driver's seat. Additional indicator lights may need to be purchased to comply with this requirement.

* Items included with PTO (air valve, fittings, hose)

PARTS LIST AND DESCRIPTION

| ITEM | QTY | PART NUMBER | DESCRIPTION |
|------|------|---|---|
| 1 | 1 | DPC2H-K1 DPC2H-K2 | Single Console Housing Kit Dual Console Housing Kit |
| 2 | 16 | DPC2L-008 | Screw |
| 3 | 1 | DPC2B-006 DPC2B-007 | Top Cap – single Top Cap – dual |
| 4 | 1 | DPC2L-PTOK1 DPC2L-PUMPK1 DPC2L-PUMPK2 | PTO Shifter Assy. w/light, hardware, single cap Pump Shifter Assy. w/light, hardware, single cap Pump Shifter Assy. w/light, hardware, dual capa |
| 5 | 1 | DPC2CC-HWK | Cable Hardware Kit (5/16-24) |
| 6 | Opt. | DPC2B-001 | Acc. Tarp Bracket w/screws |
| 7 | Opt. | DPC2B-002 | Acc. Air Valve Bracket w/screws |
| 8 | Opt. | DPC2B-003 | Acc. Tag Axle Bracket w/screws |
| 9* | 1 | 36MK1007 | Bolt Kit |
| 10 | 1 | 36T39904K DPC2B-005K | PTO Top Plate Kit w/screws, L.E.D. Blank Top Plate Kit w/screws, L.E.D. |

| ITEM | QTY | PART NUMBER | DESCRIPTION |
|--------------|-----|-------------|--|
| 11 | 4 | DPC2B-008 | Top Plate Screw |
| 12 | 1 | 32T39265 | Red L.E.D. |
| 13 | 1 | 36T39907K | Rocker Switch Adapter Plate Kit w/36MK1007 |
| N.S. | | DPC2B-009 | 12V Bayonet Light Bulb |
| N.S. | | DPC2CC-*** | Control Cable (***) Length in inches – 060, 072, 084, 096, 108, 120, 144, 180) |
| HOOK UP KITS | | | |
| N.S. | | EHKDL | E Series Direct Mount (CCW) |
| N.S. | | EHKDR | E Series Direct Mount (CW) |
| N.S. | | EHKR | E Series Remote Mount (Bi-Rot) |
| N.S. | | BPUGDMCW | S Series SA Direct Mount (CW) |
| N.S. | | BPUGDM | S Series SA Direct Mount (CCW) |
| N.S. | | BPUGD | S Series SA Remote Mount (Bi-Rot) |
| N.S. | | 47MGM1653 | TG Series, 5/16-24 thd. |

Assembly instructions are on reverse side.

DPC2 SERIES DUMP PUMP CONSOLE ASSEMBLY INSTRUCTIONS

- 1) Assemble the console housing (item 1) using 12 screws (item 2) with sides oriented as shown on the parts list. Tighten screws firmly.
- 2) Select the final location of the console in the cab of the truck and use the assembled housing to mark the floorboard for the mounting screw or bolt locations and the hole location for the cable(s) to pass through. Cut out the hole for cable(s).
- 3) Thread cable end into the cable stud. Locate the cable stud hole on the half moon plate of the shifter assembly and insert the cable stud from the support plate side. Secure with "E" clip.
- 4) Align cable with support plate. Place the shim plate over matching holes between the support plate and the cable. Place clamp over the cable making sure it engages the mounting groove. Insert clamp bolts from back side of support plate so that they protrude through the holes in the support plate, shim plate and clamp. Install a lock washer and nut on each of the bolts and tighten. Repeat for second cable shifter if present. If second cable shifter is present, proceed to step 6.
- 5) Attach PTO air shift valve or rocker switch plate to faceplate using bolt kit (item 9). Install red L.E.D. indicator light (item 12) and rocker switch if being used. Attach assembled faceplate to shifter cap assembly using 4 screws (item 11).
- 6) Slide the loose end of the cable(s) in through the top of the assembled console housing and proceed until the shifter cap is close to the console housing. Rotate the shifter assembly so that the cap mounting holes line up with the corresponding holes on the console housing. Set the shifter cap onto the housing and insert the 4 screws (item 2) but do not tighten.
- 7) Feed loose end of cable(s) through cut-out in floorboard until console is setting upright (assistance may be required). Secure console to floorboard and check cables for proper length. Remove the 4 loose shifter cap screws and lift shifter assembly and cables out far enough to route electrical wires and air hose (air shift PTO).
- 8) Make necessary connections to indicator light(s), backlighting, rocker switch and or air shifter (PTO). The backlighting should be connected to a dash light circuit and a ground. The indicator light(s) (L.E.D.) should be connected to the PTO indicator switch (PTO shifter) / body up switch (pump shifter) and ground.
- 9) Carefully replace shifter assembly and screws. Tighten screws.

NOTE: If adding a secondary cable control to the primary console, remove and discard the unneeded top cap. Install the new control into the primary cap the same way it was removed from its original cap.

