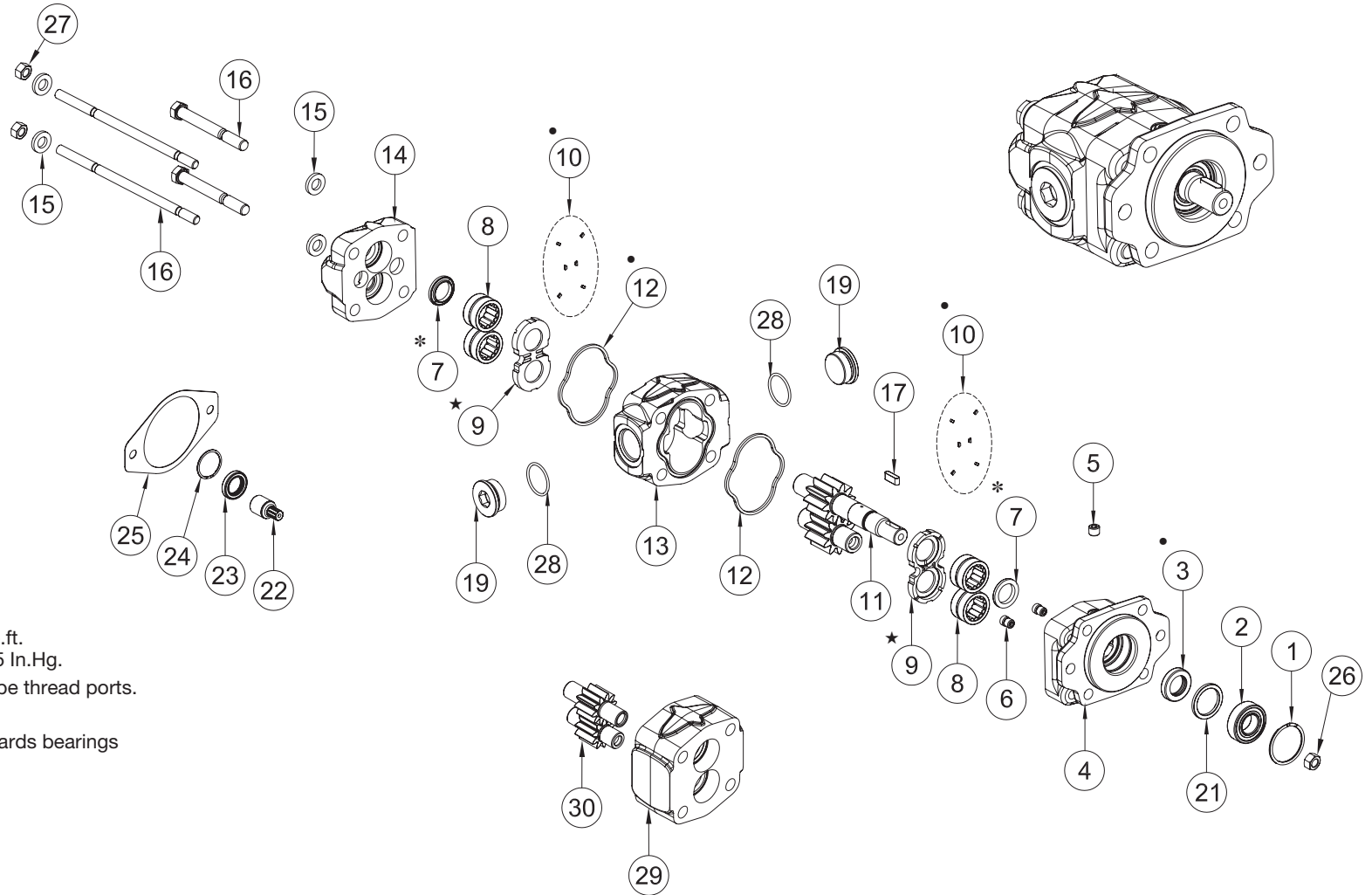




# K SERIES PUMP/MOTOR SERVICE PARTS

DESIGN NUMBER 1



NOTE: Torque bolts to 155 lb.ft.  
Maximum vacuum is 5 In.Hg.  
Do not use Teflon Tape on pipe thread ports.

- \* Ring seal slot goes towards bearings
- Included in seal kit
- ,\* Included in rebuild kit



Muncie Power Products, Inc. General Offices and Distribution Center • P.O. Box 548 • Muncie, IN 47308-0548  
(765) 284-7721 • (765) 284-6991 • info@munciepower.com  
<http://www.munciepower.com>  
Drive Products, Exclusive Agents for Canada,

# K SERIES PUMP/MOTOR SERVICE PARTS

Item	Description	Qty	Muncie Number
1	Spacer Snap Ring	1	PS1-1004-D
2	O.B. Bearing 7/8 Round	1	PK1-1002
3	• Shaft Seal High Pressure (GFN)	1	PS1-1005
	Shaft Seal Low Pressure (BUN)	1	PK1-1005
4	Front Cover		
	SAE A Flange 2 bolt	1	PK1-1007-ALPAB
	SAE B Flange 2 bolt short	1	PK1-1007-HSXXX
	SAE B Flange 4 bolt	1	PK1-1007-KLPAB
	SAE B Flange 6 bolt	1	PK1-1007-BLPAB
	G Flange	1	PK1-1007-GSXXX
	Remote Mount	1	PK1-1007-RLPAB
	Clutch Pump Remote Mount	1	PK1-1007-RLPABC
5	Pipe Plug -4 NPTF	1	HHPP-4Z
6	Check Valve Assembly	2	PS1-1010
7	Ring Seal	2 or 3(RV)	PS1-1008
8	Bearing	4	PS1-1013
9	★ Wear Plate	2	PS1-1014
10	• Pocket Seals (12 Pieces)	1	PS1-1009-SK
11	Gear Set		
	3/4-11T	8GPM	1.....PK1-1016-S16-08-2
		11GPM	1.....PK1-1016-S16-11-2
		13GPM	1.....PK1-1016-S16-13-2
	7/8-13T	4GPM	1.....PK1-1016-S02-04-2
		6GPM	1.....PS1-
	1016-S02-06-2	8GPM	1.....PK1-1016-S02-08-2
		11GPM	1.....PK1-1016-S02-11-2
		13GPM	1.....PS1-
	1016-S02-11-2	15GPM	1.....PK1-1016-S02-15-2
		17GPM	1.....PS1-1016-S02-15-2
	7/8-13T (Short)	8GPM	1.....PKS1-1016-S02-08-2
		11GPM	1.....PKS1-1016-S02-11-2
		13GPM	1.....PKS1-1016-S02-13-2
		15GPM	1.....PKS1-1016-S02-15-2
		17GPM	1.....PKS1-1016-S02-17-2
	7/8-13T Tandem	8GPM	1.....PK1-1016-S02-08-TV2
		11GPM	1.....PK1-1016-S02-11-TV2
		13GPM	1.....PK1-1016-S02-13-TV2
	7/8-13T Tandem (Short)	13GPM	1.....PKS1-1016-S02-13T2
		17GPM	1.....PKS1-1016-S02-17T2
	7/8 Rnd. Shaft	4GPM	1.....PK1-1016-K09-04-2
		6GPM	1.....PK1-1016-K09-06-2
		8GPM	1.....PK1-1016-K09-08-2
		11GPM	1.....PK1-1016-K09-11-2
		13GPM	1.....PK1-1016-K09-13-2
		15GPM	1.....PK1-1016-K09-15-2
		17GPM	1.....PK1-1016-K09-17-2
	7/8 Rnd. Shaft Tandem	6GPM	1.....PK1-1016-K09-06-TV2
	1.0"-15T	17GPM	1.....PK1-1016-S17-17-2
	1.0"-15T Tandem	17GPM	1.....PK1-1016-S17-17-TV2
	Tapered	13GPM	1.....PK1-1016-T04-13-2

Item	Description	Qty	Muncie Number
12	• Body Seal	2	PS1-1015
13	Body		
	4GPM -8NPT x -8NPT	1	PK1-1025-04-PBN
	6GPM -12NPT x -12NPT	1	PK1-1025-06-PBX
	8GPM -16NPT x -16NPT	1	PK1-1025-08-PCH
	11GPM -16NPT x -16NPT	1	PK1-1025-11-PCH
	13GPM -20NPT x -20NPT	1	PK1-1025-13-PCR
	15GPM -20NPT x -20NPT	1	PK1-1025-15-PCR
	17GPM -20NPT x -20NPT	1	PK1-1025-17-PCR
	4GPM -10SAE x -10SAE	1	PK1-1025-04-SFM
	6GPM -12SAE x -12SAE	1	PK1-1025-06-SFX
	8GPM -16SAE x -16SAE	1	PK1-1025-08-SGI
	11GPM -16SAE x -16SAE	1	PK1-1025-11-SGI
	13GPM -20SAE x -20SAE	1	PK1-1025-13-SGT
	15GPM -20SAE x -20SAE	1	PK1-1025-15-SGT
	17GPM -20SAE x -20SAE	1	PK1-1025-17-SGT
	13GPM TSP -16SAE x -16SAE	2	PK1-1025-13-SGI
	17GPM TSP -16SAE x -16SAE	2	PK1-1025-17-SGI
14	Rear Cover		
	-16NPT x -16NPT	1	PK1-1026-PCH
	-16SAE x -16SAE	1	PK1-1026-SGI
	Machined for RV, SAE	1	PK1-1026-SDRRV
	Tandem Versatile	1	PK1-1026-TVH
15	Washer	4	PS1-1029
16	Capscrew		
	4GPM (9/16-12UNC x 4)	4	PS1-1028-06
	6GPM (9/16-12UNC x 4-1/4)	4	PK1-1028-06
	8GPM (9/16-12UNC x 4-1/2)	4	PK1-1028-11
	11GPM (9/16-12UNC x 4-1/2)	4	PK1-1028-11
	13GPM (9/16-12UNC x 5)	4	PK1-1028-15
	15GPM (9/16-12UNC x 5-1/2)	4	PS1-1028-11
	17GPM (9/16-12UNC x 5-1/2)	4	PK1-1028-17
	17GPM (9/16-12UNC x 5-3/4)	4	PS1-1028-15
	Stud		
	TSP (9/16-12UNC x 10-1/2)	2	PK1-1028-307S
	TSP (9/16-12UNC x 11-1/2)	2	PK1-1028-317S
	TSP (9/16-12UNC x 12-1/2)	2	PK1-1028-322S
17	Key	1	PK1-1017
	Woodruf Key (Tapered)	1	PH1-1017-W
19	Port Plug		
	-8 NPTF	2	HHPP-8Z
	-12 NPTF	2	HHPP-12Z
	-16 NPTF	2	HHPP-16Z
	-20 NPTF	2	HHPP-20Z
	1-1/16-12UN SAE J514	2	HHBP-12Z
	1-5/16-12UN SAE J514	2	HHBP-16Z
	1-5/8-12UN SAE J514	2	HHBP-20Z
21	Seal Spacer	1	PS1-1002D
	Seal Spacer (Short)	1	PS1-1001D

Item	Description	Qty	Muncie Number
22	Connection Shaft Tandem		
	Versatile 7/8-13T	1	PK1-1033-TV
	Shortstack	1	PK1-1033-TS
23	Connection Shaft Seal TV Only	1	PL1-1005
24	Connection Shaft Seal Snap Ring TV Only	1	PL1-1004
25	Rear Flange Gasket for TV	1	PL1-1032-TV
26	Nut (1/2-20UNF) (tapered only clutch mount)	1	PH1-1020
27	Nut (9/16-12UNC) (TSP Only)	4	PK1-1020
28	O-Ring		
	0.76x0.10 (For HHBP-10)	2	BOR-10
	0.92x0.12 (For HHBP-12)	2	BOR-12
	1.18x0.12 (For HHBP-16)	2	BOR-16
	1.47x0.12 (For HHBP-20)	2	BOR-20
29	Bearing Carrier Unported TSP	1	PK1-1031-XX
30	Tandem Idler Set		
	8GPM	1	PK1-1023-8-TV2
	11GPM	1	PK1-1023-11-TV2
	13GPM	1	PK1-1023-13-TV2
	17GPM	1	PK1-1023-17-TV2

KITS	Description	Muncie Number
N.S.	Seal Kit	
	"K" Series Standard	kit.....GSK-PK-12
	"KS"	kit.....GSK-PKS-12
	Rebuild Kit	kit.....RBK-PK-12
	Bearing Kit	kit.....PS1-1013-K