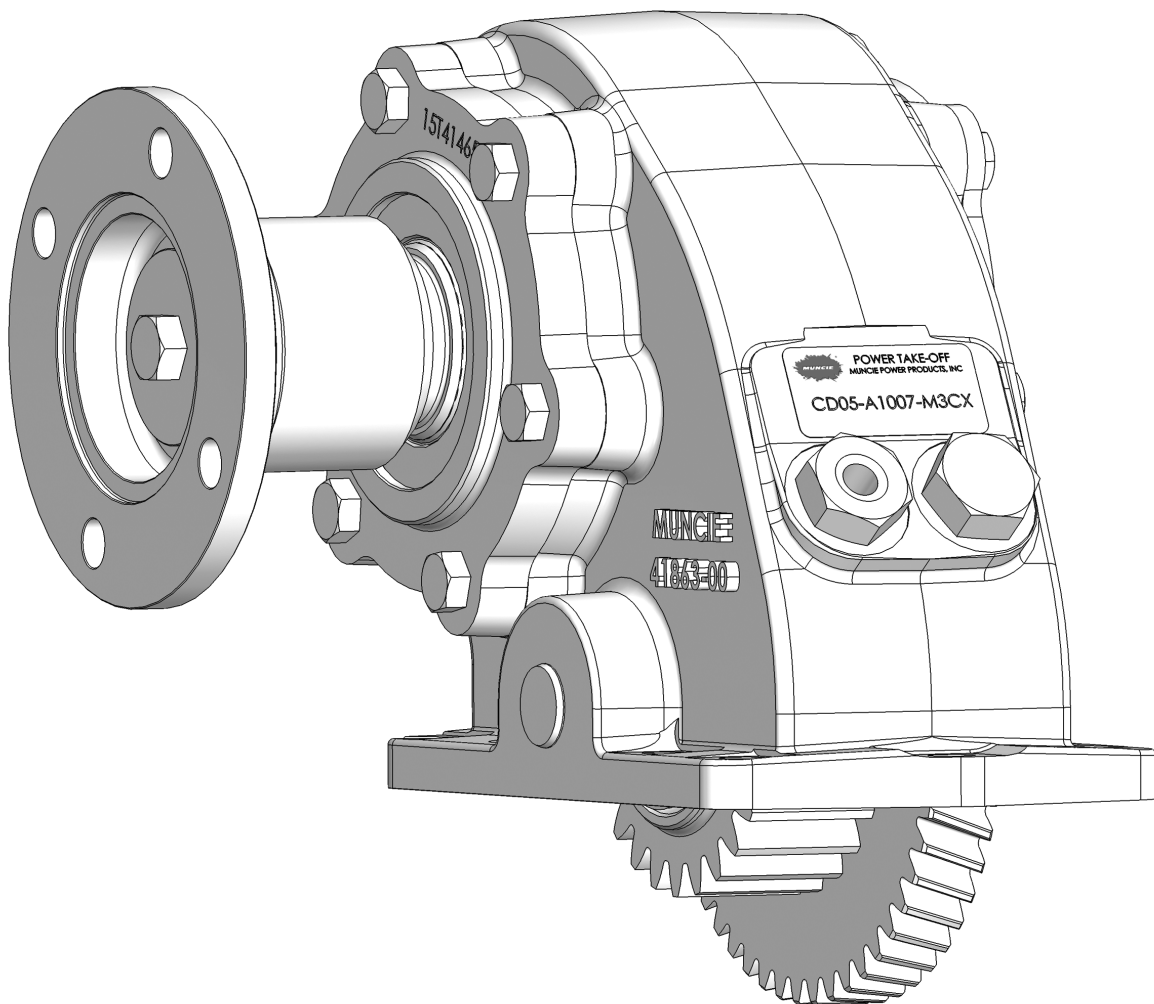




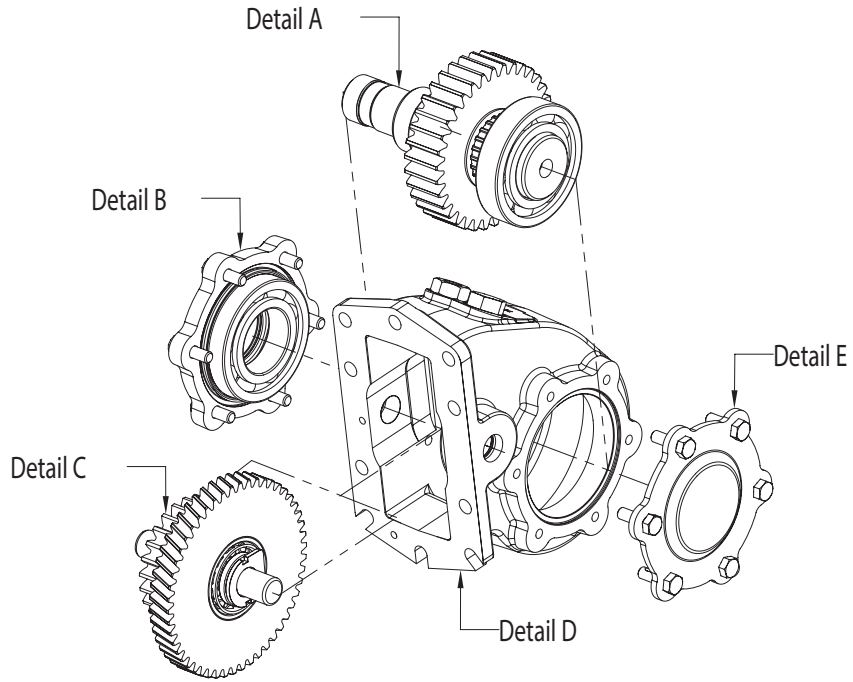
CD05/10 SERIES PTO

PARTS LIST AND SERVICE MANUAL

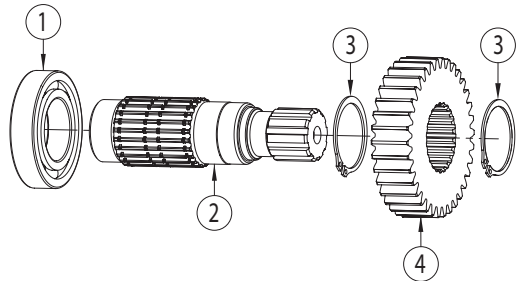


Heavy Duty, Constant Drive PTO

CD05/10 PTO EXPLODED VIEWS



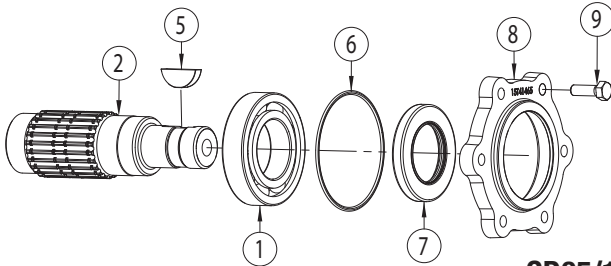
DETAIL A – OUTPUT SHAFT ASSEMBLY



DETAIL B – OUTPUT OPTIONS

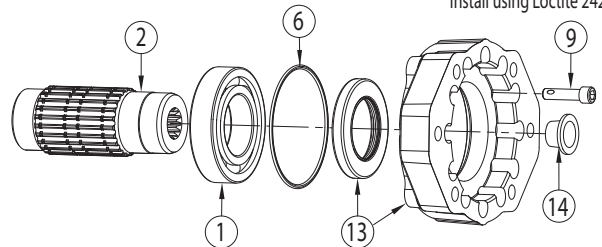
CD05/10 – “B” Output Option

Torque to 25 ft. lbs.
Install using Loctite 242 or equivalent



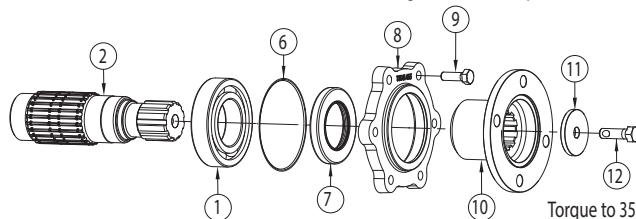
CD10 – Hydraulic Output Option

Torque to 25 ft. lbs.
Install using Loctite 242 or equivalent



CD05/10 – “2” & “C” Output Option

Torque to 25 ft. lbs.
Install using Loctite 242 or equivalent

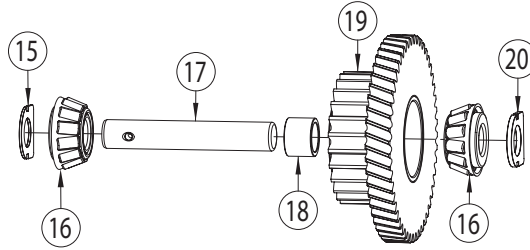


Torque to 35 ft. lbs.
Install using Loctite 242 or equivalent

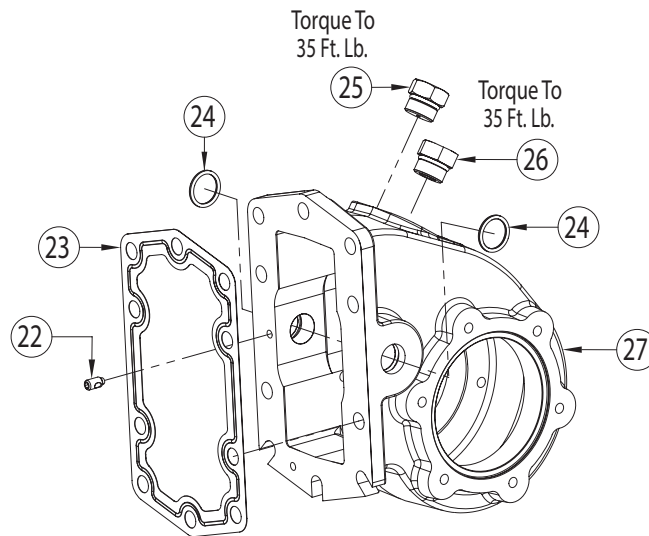
CD05/10 PTO EXPLODED VIEWS

DETAIL C – INPUT SHAFT ASSEMBLY

Input Shaft Assembly



DETAIL D – PTO HOUSING ASSEMBLY

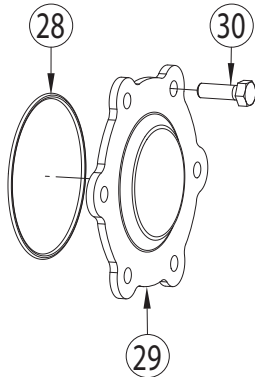


DETAIL E – BEARING COVER ASSEMBLY

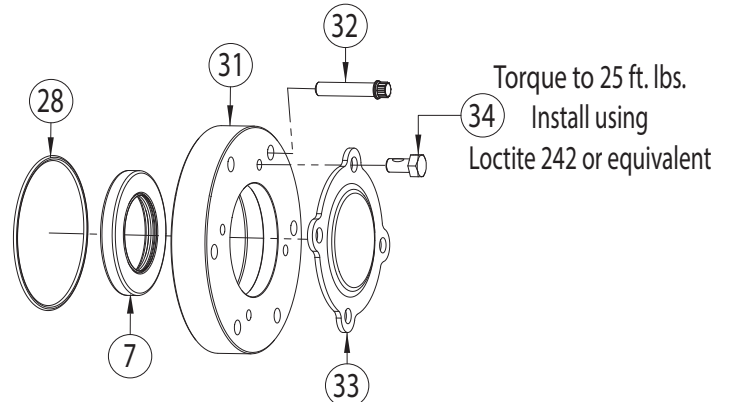
CD05/10 – Bearing Cover Assembly

CD10 – Greaseable Bearing Cover Assembly

Torque to 25 ft. lbs.
Install using Loctite 242 or equivalent



Torque to 25 ft. lbs.
Install using Loctite 242 or equivalent



PARTS LIST & DESCRIPTION

ITEM	QTY	PART NO	DESCRIPTION
Detail A			
01		210T35775	Bearing
02	1	See Table A	Output Shaft
03	2	24T26980	Snap Ring
04	1	See Table B	Bell Gear
Detail B			
05	1	26T01627	Woodruff Key "B"
06	1	12T36863	O-Ring (CD10)
	1	12T41793	O-Ring (CD05)
	1	12T36863	O-Ring ("B", "C", & "2" Output Option)
07	2	11T64141	Shaft Seal (Option "G")
	1	11T64141	Shaft Seal
08	1	See Table C	Hydraulic Flange
09	6	19T32740	Hex Cap Screw "2", "B", & "C"
	6	19T31577	Hex Cap Screw "D", "P", "Q", "S", & "Z"
	6	19M84478	Socket Head Cap Screw "E", "R", & "Y"
	6	19T35386	Socket Head Cap Screw "I"
	6	19T34717	12 Pt. Cap Screw "IG"
10	1	14T37498	Companion Flange "2"
	1	14T31499	Companion Flange "C"
11	1	21T20092	Flat Washer "2" & "C"
12	1	19T38266	Hex Cap Screw "2" & "C"
13	1	See Table D	Flange/Seal Kit
14	1	25T35520	Cap Plug "R"
	1	25T35724	Cap Plug "D", "DG", "Q", "S", & "SG"
	1	25T35725	Cap Plug "P"
	1	25T35936	Cap Plug "E", "Y", "YG", "Z", & "ZG"
	1	25T37767	Cap Plug "I", & "IG"
Detail C			
15	1	18T41452	CD05 Input Bearing Shim
16	2	10T35776	Roller Bearing

ITEM	QTY	PART NO	DESCRIPTION
Detail C continued			
17	1	07T35780	Input Shaft
18	1	See Table E	Cone Spacer
19	1	See Table E	Input Gear
20	1	See Table F	CD05 Input Bearing Shim
21	1	See Table G	CD10 Input Bearing Spacer
Detail D			
22	1	19T35785	Set Screw
23	1	13T35777	Gasket
24	2	12T35774	O-Ring
25	1	25T35784	Lubrication Plug
26	1	25T35999	Plug
	1	01T60219	CD10 Housing
	1	01T41864	CD05 Housing (3 Arrg. Only)
27	1	01T41864	CD05 Housing (3 Arrg. Only)
	1	01T41864	CD05 Housing (3 Arrg. Only)
Detail E			
28	1	12T36863	O-Ring
29	1	15T35772	Bearing Cover
30	6	19T32740	Hex Cap Screw
31	1	15T39026	Bearing Cover (Option "G")
32	6	19M84478	12 Pt. Cap Screw (Option "G")
33	1	15T34323	Shaft Cover (Option "G")
34	4	19T33134	Hex Cap Screw (Option "G")
N.S.	1	48TK4469	CD05/10 Installation Kit Includes: Gasket Pack, Label Pack, Stud Kit & Pressure Lube Kit
N.S.	1	CD-GSK	CD10 Gasket Kit Includes: (2)6, (1)7, (1) 23 & (2)24
N.S.	1	CD05-GSK	CD05 Gasket Kit Includes: (1)6, (1)7, (1)24, (2)25 & (1)29
N.S.	1	CD-RBK	CD10 Rebuild Kit Includes: (2)1, (2)3, (2)6, (1)7, (2)16, (1)23 & (2)24
N.S.	1	CD05-RBK	CD05 Rebuild Kit Includes: (2)1, (2)3, (1)6, (1)7, (2)16, (1)23, (2)24 & (1)28

TABLES A, B, C, D, E, F, & G

Table A – Output Shaft (Item 2)

PART NO	DESCRIPTION
06T35972	Output Shaft “B”: 1.3" Rd.
06T35763	Output Shaft “2” & “C”: 1½"-10T SPL
06T35764	Output Shaft “D”, “Q”, & “S”: ¾"-13T SPL
06T35765	Output Shaft “E”, “Y”, & “Z”: 1¼"-14T SPL
06T36831	Output Shaft “I”: DIN 5462 36mm-8T SPL
06T37187	Output Shaft “P”: 1" -15T SPL
06T37723	Output Shaft “R”: ⅝" -9T SPL
06T41172	Output Shaft “T”: ¾" -11T SPL
06T37374	Output Shaft “IG”: Greaseable DIN 5462 36mm-8T SPL
06T38197	Output Shaft “PG”: Greaseable 1" -15T SPL
06T38264	Output Shaft “DG” & “SG”: Greaseable ⅞" -13T SPL
06T40647	Output Shaft “EG”, “YG”, & “ZG”: Greaseable 1¼" -14T SPL
06T37186	Output Shaft “IW”: Wetspline DIN 5462

Table B – Bell Gear (Item 4)

PART NO	DESCRIPTION
02T35753	Bell Gear 05 (38T)
02T35920	Bell Gear 06 (36T)
02T35756	Bell Gear 07 (34T)
02T35759	Bell Gear 08 (32T)
02T35762	Bell Gear 10 (30T)
02T39067	Bell Gear 12 (27T)
02T39068	Bell Gear 15 (24T)

Table C – Hydraulic Flange (Item 8)

PART NO	DESCRIPTION
14T36007	Hydraulic Flange “Y”
14T36834	Hydraulic Flange “I”
14T37474	Hydraulic Flange “S”
14T37724	Hydraulic Flange “R” & “Q”
14T39570	Hydraulic Flange “IG” & “IW” (Breather 44M30137 Required)
15T41465	Bearing Cover “2”, “B”, & “C”

Table D – Flange/Seal Kit (Item 13)

PART NO	DESCRIPTION	COMPONENTS
14TA4651	“D”, “P”, & “Z” Flange/Seal Assembly	Includes: 14T35767 Hydraulic Flange & 11T64141 Output Shaft Seal
14TA5314	“E” Flange Seal Assembly	Includes: 14T40576 Hydraulic Flange & 11T64141 Seal

Table E – Cone Spacer (Item 18) & Input Gear (Item 19)

Assembly Purchase input gear assembly (Item 19 – 03TAXXXX) which includes the correct cone spacer (Item 18).

ASSY NO	DESCRIPTION	GEAR NO
03TA4624	A1005 Input Gear (50T/21T)	03T35752
03TA4625	A1006 Input Gear (50T/23T)	03T35919
03TA4626	A1007 Input Gear (50T/25T)	03T35755
03TA4627	A1008 Input Gear (50T/27T)	03T35758
03TA4628	A1010 Input Gear (50T/29T)	03T35761
03TA4629	A1012 Input Gear (50T/32T)	03T36545
03TA4629	A1015 Input Gear (50T/35T)	03T38830

The cone spacer installs between the tapered input bearings to set the bearing preload at .002" - .006" loose; critical dimension. See page 4 for visual detail.

Table F – Kit 18TK5233 Input Bearing Shim (Item 20) – Only 1 Is Used

PART NO	DESCRIPTION	DIMENSION
18T41437	Bearing Shim	(.1150"/.1130")
18T41438	Bearing Shim	(.1175"/.1155")
18T41439	Bearing Shim	(.1200"/.1180")
18T41440	Bearing Shim	(.1225"/.1205")
18T41441	Bearing Shim	(.1250"/.1230")
18T41442	Bearing Shim	(.1275"/.1255")
18T41443	Bearing Shim	(.1300"/.1280")
18T41444	Bearing Shim	(.1325"/.1305")
18T41445	Bearing Shim	(.1350"/.1330")
18T41446	Bearing Shim	(.1375"/.1355")
18T41447	Bearing Shim	(.1400"/.1380")
18T41448	Bearing Shim	(.1425"/.1405")
18T41449	Bearing Shim	(.1450"/.1430")
18T41450	Bearing Shim	(.1475"/.1455")
18T41451	Bearing Shim	(.1500"/.1480")

Table G – CD10 Input Bearing Spacer (Item 21) – Only 1 Is Used

PART NO	DESCRIPTION	DIMENSION
18T35783	Bearing Spacer	(.1150"/.1130")
18T38725	Bearing Spacer	(.1175"/.1155")
18T35782	Bearing Spacer	(.1200"/.1180")
18T38726	Bearing Spacer	(.1225"/.1205")
18T35781	Bearing Spacer	(.1250"/.1230")
18T38727	Bearing Spacer	(.1275"/.1255")
18T36230	Bearing Spacer	(.1300"/.1280")
18T38728	Bearing Spacer	(.1325"/.1305")

PART NO	DESCRIPTION	DIMENSION
18T36229	Bearing Spacer	(.1350"/.1330")
18T38729	Bearing Spacer	(.1375"/.1355")
18T37151	Bearing Spacer	(.1400"/.1380")
18T38730	Bearing Spacer	(.1425"/.1405")
18T37152	Bearing Spacer	(.1450"/.1430")
18T38731	Bearing Spacer	(.1475"/.1455")
18T37153	Bearing Spacer	(.1500"/.1480")

CD05/10 MODEL NUMBER CONSTRUCTION

CD 05 - A10 07 - M 1 B X

PTO Type

CD – Constant Drive

Mountings

10 – 10-Bolt Mount

05 – 10-Bolt Mount

Transmission Gear Input Option

A10 – Allison 10.16P RH

Speed Ratios

05 – .55:1 (CD10)

06 – .64:1 (CD10)

07 – .74:1

08 – .84:1

10 – .97:1

12 – 1.19:1

15 – 1.46:1

Shift Type

M – Constant Mesh

Assembly Arrangements

1 – Right Side Shaft Low

3 – Left Side Shaft Low

Special Features

X – None

B – Lube Hose Optional Length – 48"

G – Greaseable Output Shaft (CD10)

U – Pulse Generator

W – Wet Spline (I Output Only)

2 – Hose Kit – 36"

3 – Hose Kit – 17"

4 – Delete Lube Hose

Output Types

B – 1¼" Round Keyed Shaft (CD05/10)

C – 1410 Companion Flange

D – SAE "B" 7/8"-13T, SAE "B" 2- & 4-Bolt*

E – SAE "C" 1¼"-14T, SAE "C" 2- & 4-Bolt*

I – DIN 5462*

P – SAE "BB" 1"-15T, SAE "B" 2- & 4-Bolt*

Q – SAE "B" 7/8"-13T, SAE "A" 2-Bolt*

R – SAE "A" 5/8"-9T, SAE "A" 2-Bolt*

S – SAE "B" 7/8" -13T, SAE "B" 2-Bolt*

T – ¾"-11T SAE "A" 2-Bolt*

V – Extended Shaft Option

Y – SAE "C" 1¼" -14T, SAE "C" 2-Bolt*

Z – SAE "C" 1¼" -14T, SAE "B" 2- & 4-Bolt*

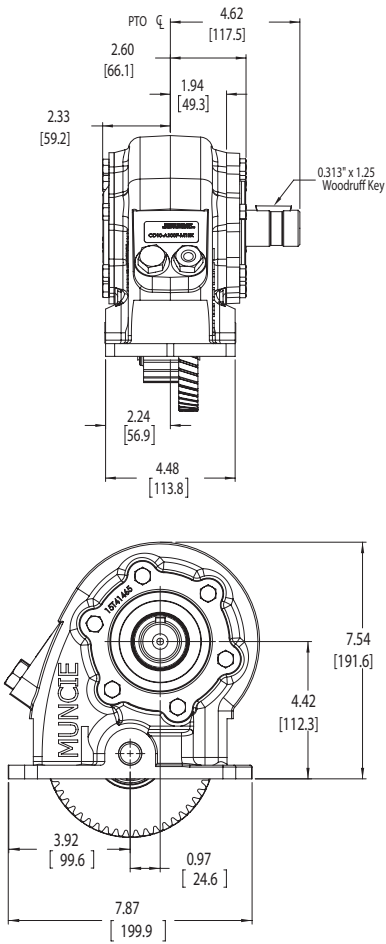
2 – DIN 100 Companion Flange

Note:

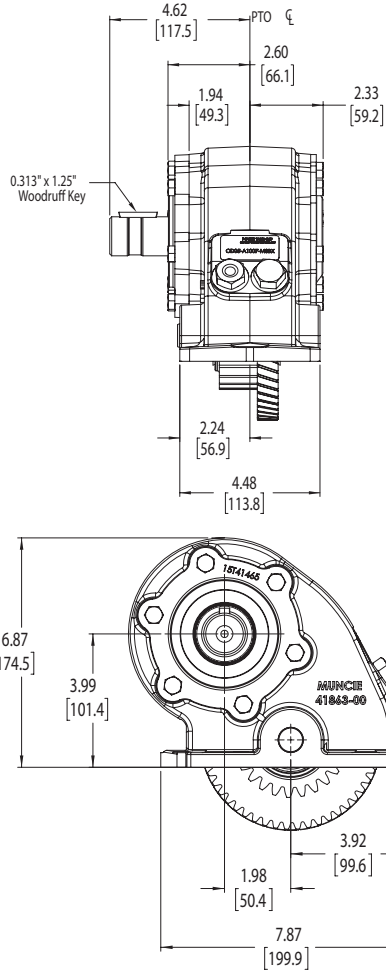
* The "E" & "Y" flange is not usable with the CD05 on any Allison transmission model. The other direct mount flanges are not usable with the CD05 on the Allison 4000, but are usable on the Allison 3000 Series transmission.

DIMENSIONS IN INCHES (MM)

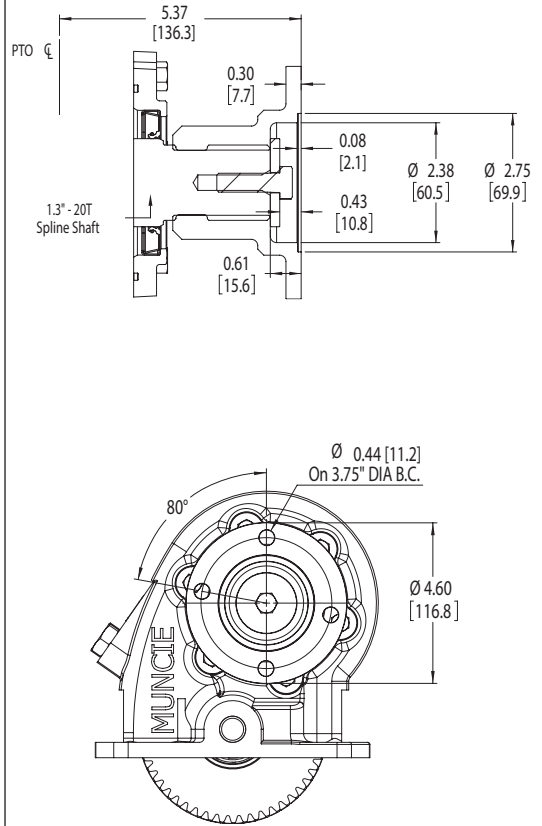
CD10 "B" Output Option
1 1/4" Round Keyed Shaft



CD05 "B" Output Option
1 1/4" Round Keyed Shaft



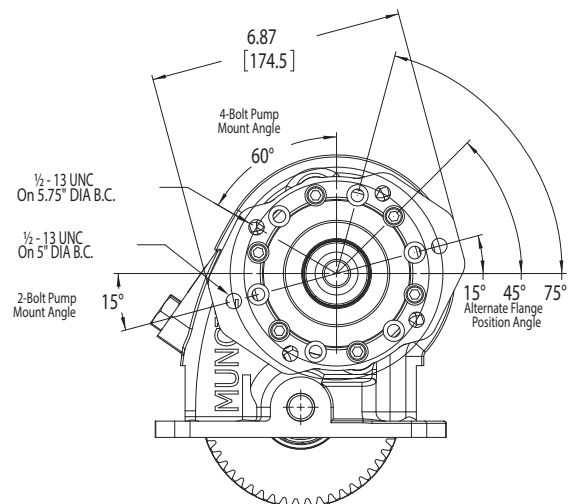
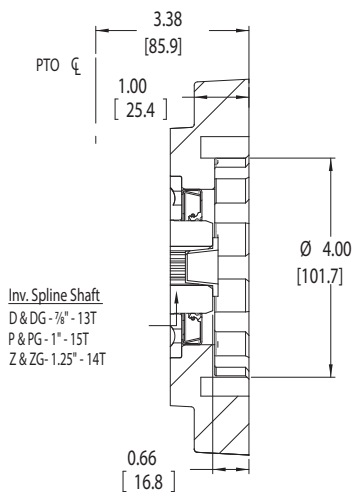
"C" Output Option
1 1/2" -10T w/1410 Series Flange



"D" & "DG (Greaseable)" Output Option
SAE 'B' 2- & 4-Bolt w/7/8" -13T SAE 'C' Shaft

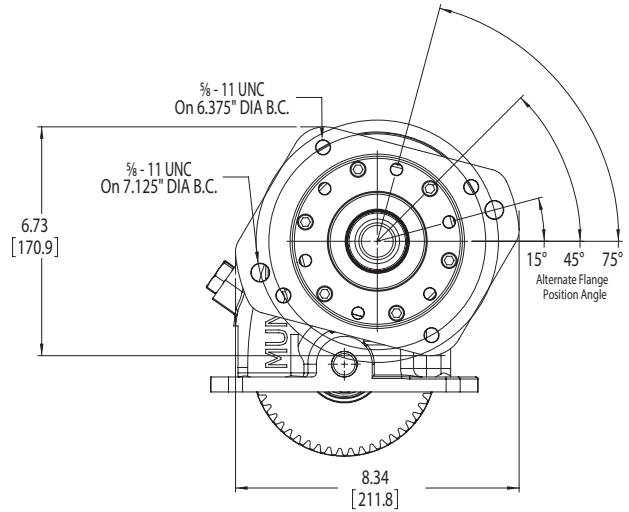
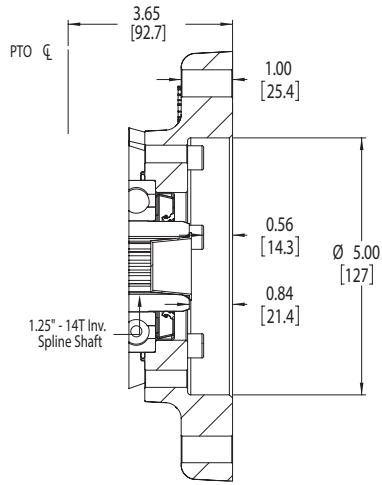
"P" & "PG (Greaseable)" Output Option
SAE 'BB' 2- & 4-Bolt w/1" -15T

"Z" & "ZG (Greaseable)" Output Option
SAE 'B' 2- & 4-Bolt Flange w/1 1/4" -14T SAE 'C' Shaft

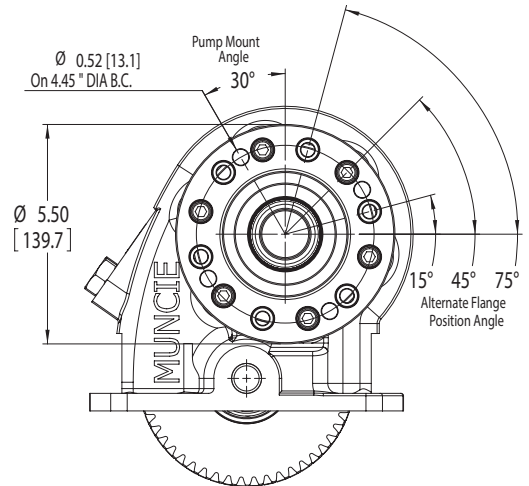
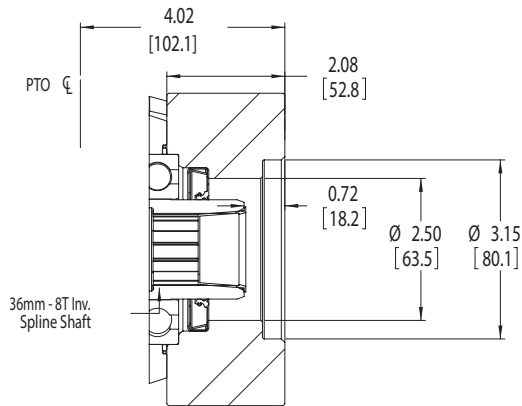


DIMENSIONS IN INCHES (MM)

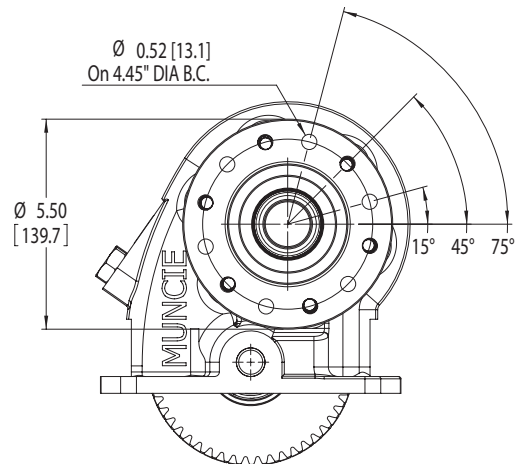
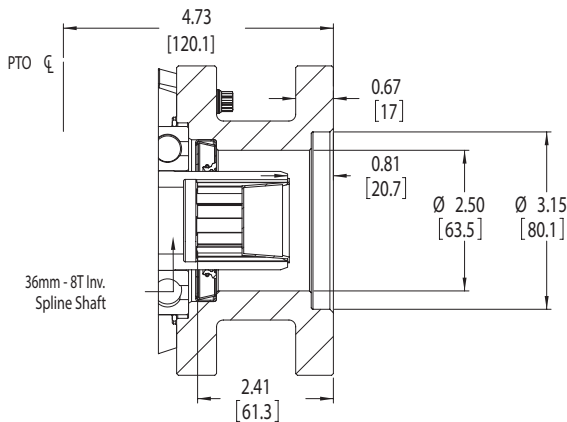
“E” & “EG” Output Option SAE ‘C’ 2- & 4-Bolt w/1¼" -14T



“I” Output Option DIN 5462 w/36mm-8T

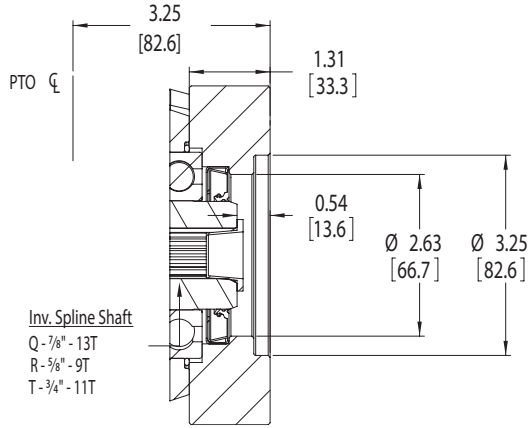


“IG (Greaseable)” Output Option DIN 5462 w/36mm-8T

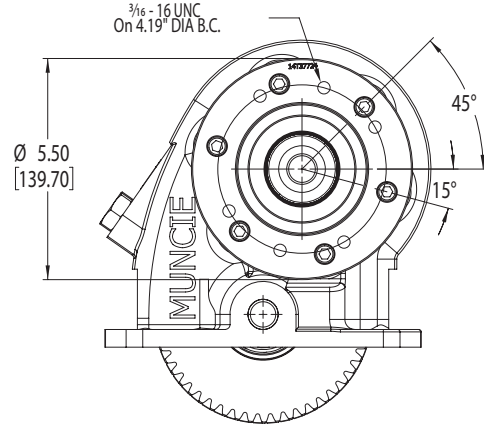


DIMENSIONS IN INCHES (MM)

“Q” Output Option
SAE ‘A’ 2- & 4-Bolt w/7/8" -13T SAE ‘B’ Shaft

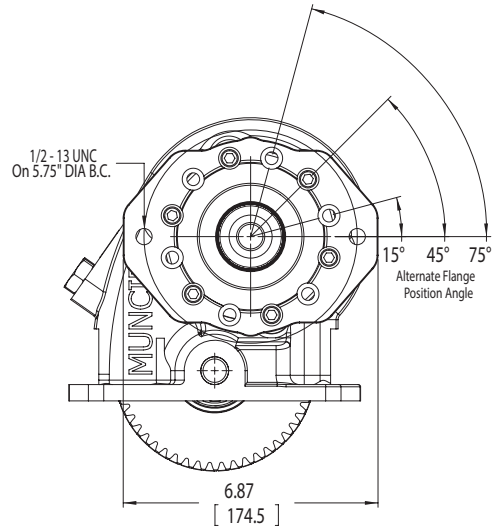
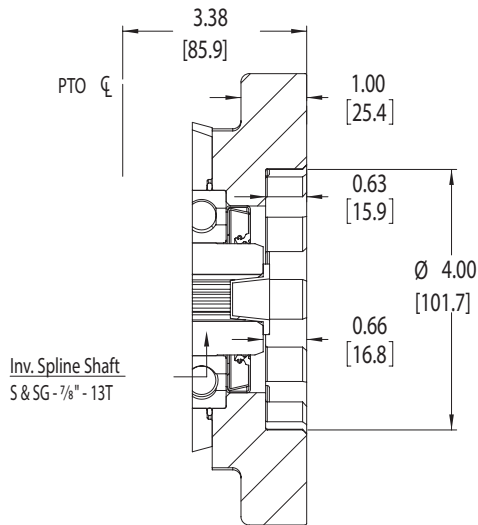


“R” Output Option
SAE ‘A’ 2- & 4-Bolt w/5/8" -9T

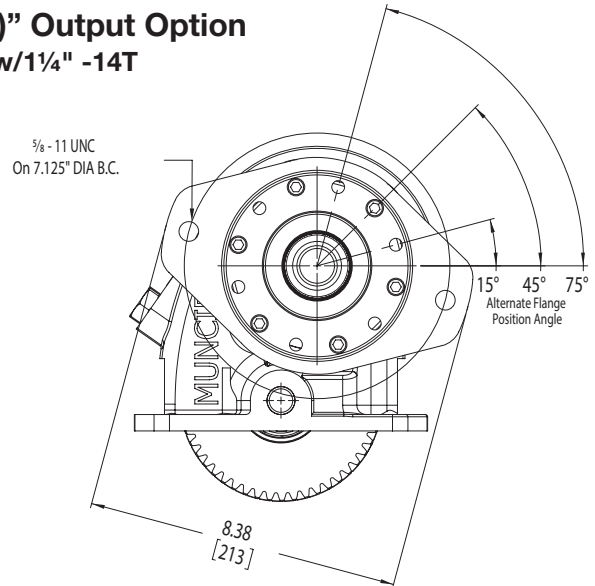
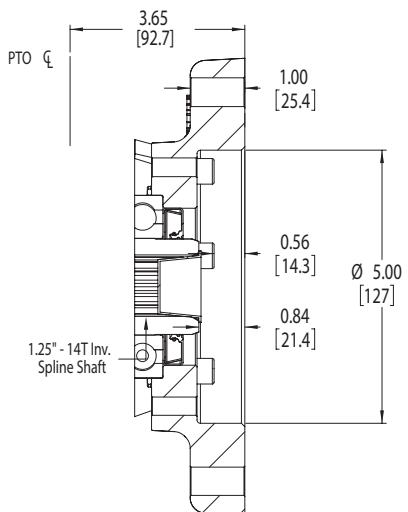


“T” Output Option
SAE ‘A’ 2-Bolt w/3/4" -11T

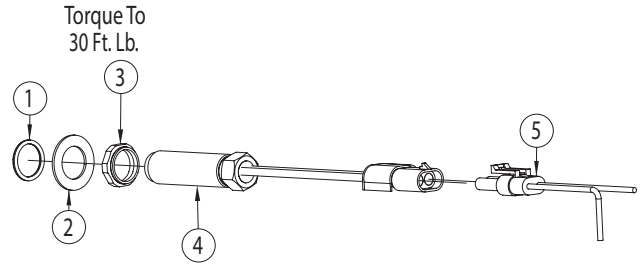
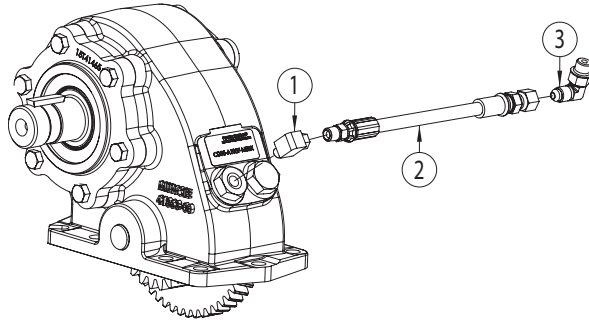
“S” & “SG” (Greaseable) Output Option
SAE ‘A’ 2- & 4-Bolt w/7/8"-13T



“Y” & “YG (Greaseable)” Output Option
SAE ‘A’ 2 & 4 Bolt w/1 1/4" -14T



ACCESSORY KITS



PRESSURE LUBE KIT

43MK3620 (Option B) 43MK2810 (Option X)
43TK4545 (Option 3) 43TK5087 (Option W)

Speed Sensor Kit 31TK3873 (Option "U")

ITEM	QTY	PART NO	DESCRIPTION
1	1	43M05522	Hydraulic Fitting (Options B & X)
		43T35867	Hydraulic Fitting (Option 3)
		43M02203	Hydraulic Fitting (Option W)
2	1	45M4R528	28" Standard Hose Assembly (Options W & X)
		45M4R548	48" Hose Assembly (Option B)
		45T39186	17" Lube Hose Assembly (Option 3)
3	1	43M68014	Elbow (Transmission) (All Options)

ITEM	QTY	PART NO	DESCRIPTION
1	1	21T41900	Seal Washer
2	1	21T35603	Flat Washer
3	1	21T35109	Jam Nut
4	1	31T25108	Mag Pickup
5	1	34MA1415	Wiring Harness

STUD KIT - 20TK6353

QTY	PART NO	DESCRIPTION
1	MC18-03	Instructions
8	19T64313	Cap Screw
2	30T62753	Alignment Stud
8	21T64303	Flat Washers



A Member of the Interpump Group

SP11-02 (Rev. 04-22)

201 East Jackson Street, Muncie, Indiana 47305
800-367-7867 • Fax: 765-284-6991 • info@munciepower.com

Specifications are subject to change without notice. Visit www.munciepower.com
for warranties and literature. All rights reserved. © Muncie Power Products, Inc. (2011)