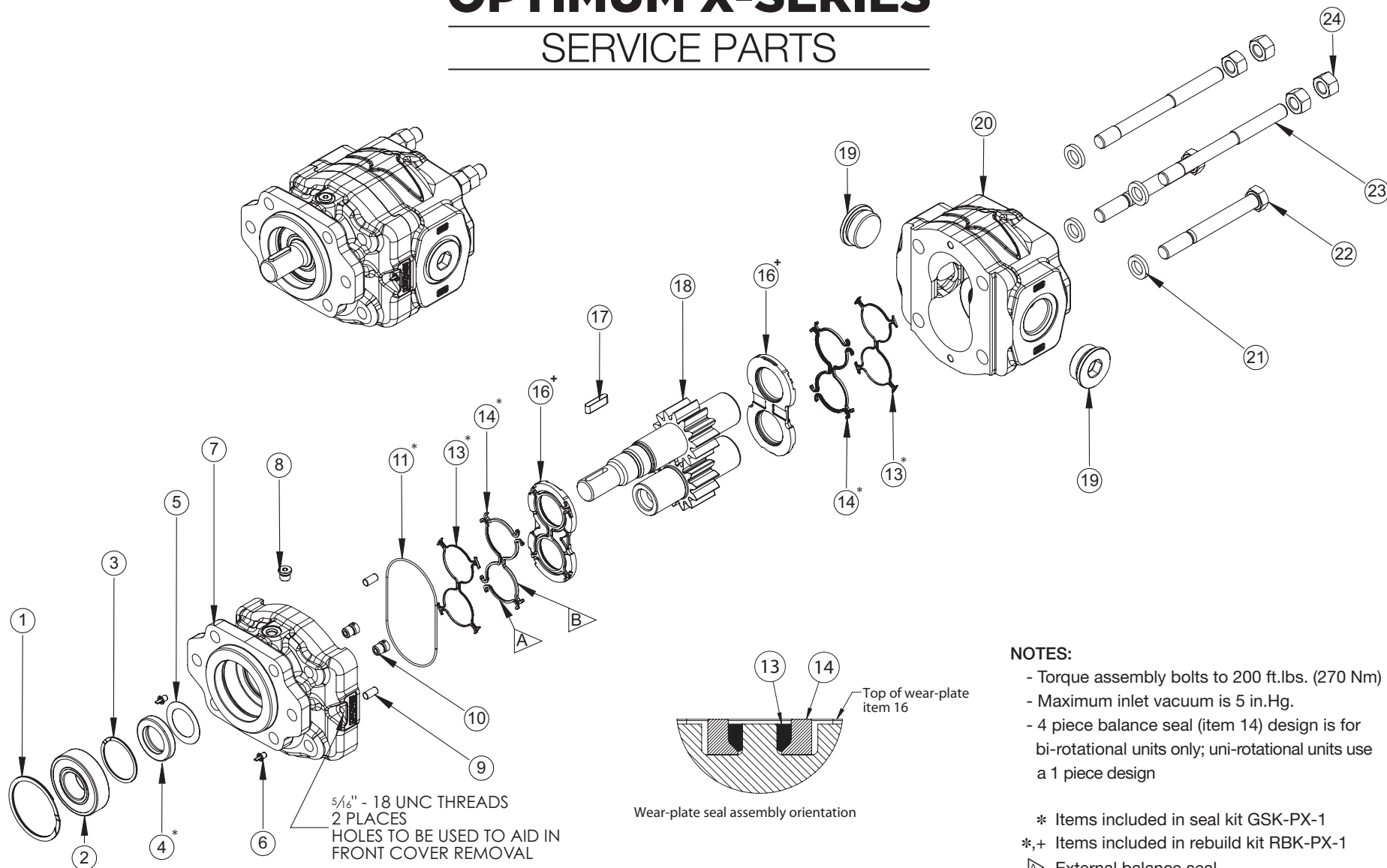




Muncie®  
Power  
Products

# OPTIMUM X-SERIES

## SERVICE PARTS



### NOTES:

- Torque assembly bolts to 200 ft.lbs. (270 Nm)
- Maximum inlet vacuum is 5 in.Hg.
- 4 piece balance seal (item 14) design is for bi-rotational units only; uni-rotational units use a 1 piece design

- \* Items included in seal kit GSK-PX-1
- \*,+ Items included in rebuild kit RBK-PX-1
- ▷ External balance seal
- ◁ Internal balance seal



Muncie®  
Power  
Products

A Member of the Interpump Group

SP12-01 (Rev. 10-17)

201 East Jackson Street • Muncie, Indiana 47305  
800-367-7867 • Fax 765-284-6991 • info@munciepower.com • www.munciepower.com  
Specifications are subject to change without notice. Visit www.munciepower.com  
for warranties and literature. All rights reserved. © Muncie Power Products, Inc. (2012)

# OPTIMUM X-SERIES SERVICE PARTS

Item	Description	Qty	Muncie Number	Item	Description	Qty	Muncie Number	Item	Description	Qty	Muncie Number
1	Outboard Bearing Snap Ring	1	PL1-1001								
2	Outboard Bearing	1	PL1-1002								
3	Shaft Seal Snap Ring	1	PL1-1004								
4	Shaft Seal High Pressure	1	PL1-1005								
5	Seal Isolator	1	PX1-1002D								
6	Jack Bolt Plug	2	PX1-1022P								
7 <sup>A</sup>	Front Cover										
	SAE "B" 2/4-bolt,										
	4" Pilot dia, w/ -4SAE Drain	1	PX1-1107-BLSDM								
	SAE "C" 4-bolt,										
	5" Pilot dia, w/ -4SAE Drain	1	PX1-1107-CLSDM								
	Remote Mount Pad,										
	w/ -4SAE Drain	1	PX1-1107-RLSDM								
8	Case Drain Plug w/ O-Ring, -6 SAE	1	HHBP-6Z								
9	Dowel Pin, 5/16" x 5/8"	2	PX1-1024								
10	Check Valve Assembly	2	PS1-1010								
11	Body Seal	1	PX1-1015								
13	Backup Seal										
	Plastic, Uni-rot design	2	PX1-1009-XPU								
	Plastic, Bi-rot design	2	PX1-1009-XPB								
14	Balance Seal										
	Uni-rot, Buna N	2	PX1-1008-XBU								
	Bi-rot, External (14A), Buna N	4	PX1-1008-XBBE								
	Bi-rot, Internal (14B), Buna N	4	PX1-1008-XBBI								
16	Wear plate										
	Uni-rotational	2	PX1-1014UX								
	Bi-rotational	2	PX1-1014BX								
17	Key										
	1-1/4" x 1/4" x 3/8"										
	for 1.00" round shaft	1	PS1-1017								
	1-1/2" x 5/16" x 15/32"										
	for 1.25" round shaft	1	PM1-1017								
18	Gear Set, SAE "B" 7/8 - 13T Spline										
	14GPM	1	PX1-1016-S02-14-2								
	16GPM	1	PX1-1016-S02-16-2								
	19GPM	1	PX1-1016-S02-19-2								
	23GPM	1	PX1-1016-S02-23-2								
	25GPM	1	PX1-1016-S02-25-2								
	27GPM	1	PX1-1016-S02-27-2								
	30GPM	1	PX1-1016-S02-30-2								
	33GPM	1	PX1-1016-S02-33-2								
	36GPM	1	PX1-1016-S02-36-2								
	Versatile <sup>B</sup> Gear Set, SAE "B" 7/8 - 13T Spline										
	14GPM	1	PX1-1016-S02-14TV-2								
	16GPM	1	PX1-1016-S02-16TV-2								
	19GPM	1	PX1-1016-S02-19TV-2								
	23GPM	1	PX1-1016-S02-23TV-2								
	25GPM	1	PX1-1016-S02-25TV-2								
	27GPM	1	PX1-1016-S02-27TV-2								
	30GPM	1	PX1-1016-S02-30TV-2								
	33GPM	1	PX1-1016-S02-33TV-2								
	36GPM	1	PX1-1016-S02-36TV-2								
	Versatile <sup>B</sup> Gear Set, SAE "BB" 1.0 - 15T Spline										
	14GPM	1	PX1-1016-S17-14TV-2								
	16GPM	1	PX1-1016-S17-16TV-2								
	19GPM	1	PX1-1016-S17-19TV-2								
	23GPM	1	PX1-1016-S17-23TV-2								
	25GPM	1	PX1-1016-S17-25TV-2								
	27GPM	1	PX1-1016-S17-27TV-2								
	30GPM	1	PX1-1016-S17-30TV-2								
	33GPM	1	PX1-1016-S17-33TV-2								
	36GPM	1	PX1-1016-S17-36TV-2								
	Versatile <sup>B</sup> Gear Set, SAE "C" 1.25 - 14T Spline										
	14GPM	1	PX1-1016-S05-14TV-2								
	16GPM	1	PX1-1016-S05-16TV-2								
	19GPM	1	PX1-1016-S05-19TV-2								
	23GPM	1	PX1-1016-S05-23TV-2								
	25GPM	1	PX1-1016-S05-25TV-2								
	27GPM	1	PX1-1016-S05-27TV-2								
	30GPM	1	PX1-1016-S05-30TV-2								
	33GPM	1	PX1-1016-S05-33TV-2								
	36GPM	1	PX1-1016-S05-36TV-2								
	Versatile <sup>B</sup> Gear Set, SAE "BB" 1.0" Round										
	14GPM	1	PX1-1016-K01-14TV-2								
	16GPM	1	PX1-1016-K01-16TV-2								
	19GPM	1	PX1-1016-K01-19TV-2								
	23GPM	1	PX1-1016-K01-23TV-2								
	25GPM	1	PX1-1016-K01-25TV-2								
	27GPM	1	PX1-1016-K01-27TV-2								
	30GPM	1	PX1-1016-K01-30TV-2								
	33GPM	1	PX1-1016-K01-33TV-2								
	36GPM	1	PX1-1016-K01-36TV-2								
	Versatile <sup>B</sup> Gear Set, SAE "C" 1.25" Round										
	14GPM	1	PX1-1016-K07-14TV-2								
	16GPM	1	PX1-1016-K07-16TV-2								
	19GPM	1	PX1-1016-K07-19TV-2								
	23GPM	1	PX1-1016-K07-23TV-2								
	25GPM	1	PX1-1016-K07-25TV-2								
	27GPM	1	PX1-1016-K07-27TV-2								
	30GPM	1	PX1-1016-K07-30TV-2								
	33GPM	1	PX1-1016-K07-33TV-2								
	36GPM	1	PX1-1016-K07-36TV-2								
19	Steel Port Plug w/ O-Ring										
	-20SAE	2	HHBP-20Z								
	-24SAE	2	HHBP-24Z								
20 <sup>A</sup>	Gear Housing										
	SAE Ports, Side & Rear										
	14GPM, -20SAE	1	PX1-1125-14-SGTGT								
	16GPM, -20SAE	1	PX1-1125-16-SGTGT								
	19GPM, -24SAE	1	PX1-1125-19-SHEHE								
	23GPM, -24SAE	1	PX1-1125-23-SHEHE								
	25GPM, -24SAE	1	PX1-1125-25-SHEHE								
	27GPM, -24SAE	1	PX1-1125-27-SHEHE								
	30GPM, -24SAE	1	PX1-1125-30-SHEHE								
	33GPM, -24SAE	1	PX1-1125-33-SHEHE								
	36GPM, -24SAE	1	PX1-1125-36-SHEHE								
	Split Flange Ports, Side Only										
	14GPM, 2.00" x 1.25"	1	PX1-1125-14-FJCXX								
	16GPM, 2.00" x 1.25"	1	PX1-1125-16-FJCXX								
	19GPM, 2.00" x 1.25"	1	PX1-1125-19-FJCXX								
	23GPM, 2.00" x 1.25"	1	PX1-1125-23-FJCXX								
	25GPM, 2.00" x 1.25"	1	PX1-1125-25-FJCXX								
	27GPM, 2.00" x 1.25"	1	PX1-1125-27-FJCXX								
	30GPM, 2.00" x 1.50"	1	PX1-1125-30-FJDXX								
	33GPM, 2.00" x 1.50"	1	PX1-1125-33-FJDXX								
	36GPM, 2.00" x 1.50"	1	PX1-1125-36-FJDXX								
21	5/8 Washer	4	PE1-1230								
22	Capscrew										
	14GPM 5/8-11UNC x 5-1/4"	2	PL1-1028-14								
	16GPM 5/8-11UNC x 5-1/2"	2	PL1-1028-16								
	19GPM 5/8-11UNC x 5-3/4"	2	PL1-1028-19								
	23GPM 5/8-11UNC x 6"	2	PL1-1028-23								
	25GPM 5/8-11UNC x 6-1/4"	2	PL1-1028-25								
	27GPM 5/8-11UNC x 6-1/2"	2	PL1-1028-27								
	30GPM 5/8-11UNC x 6-3/4"	2	PL1-1028-30								
	33GPM 5/8-11UNC x 7"	2	PE1-1028-23								
	36GPM 5/8-11UNC x 7"	2	PE1-1028-23								
23	Stud										
	14GPM 5/8-11UNC x 7"	2	PE1-1028-23S								
	16GPM 5/8-11UNC x 7-1/4"	2	PL1-1028-16S								
	19GPM 5/8-11UNC x 7-1/2"	2	PE1-1028-27S								
	23GPM 5/8-11UNC x 7-3/4"	2	PL1-1028-23S								
	25GPM 5/8-11UNC x 8"	2	PL1-1028-25S								
	27GPM 5/8-11UNC x 8-1/4"	2	PL1-1028-27S								