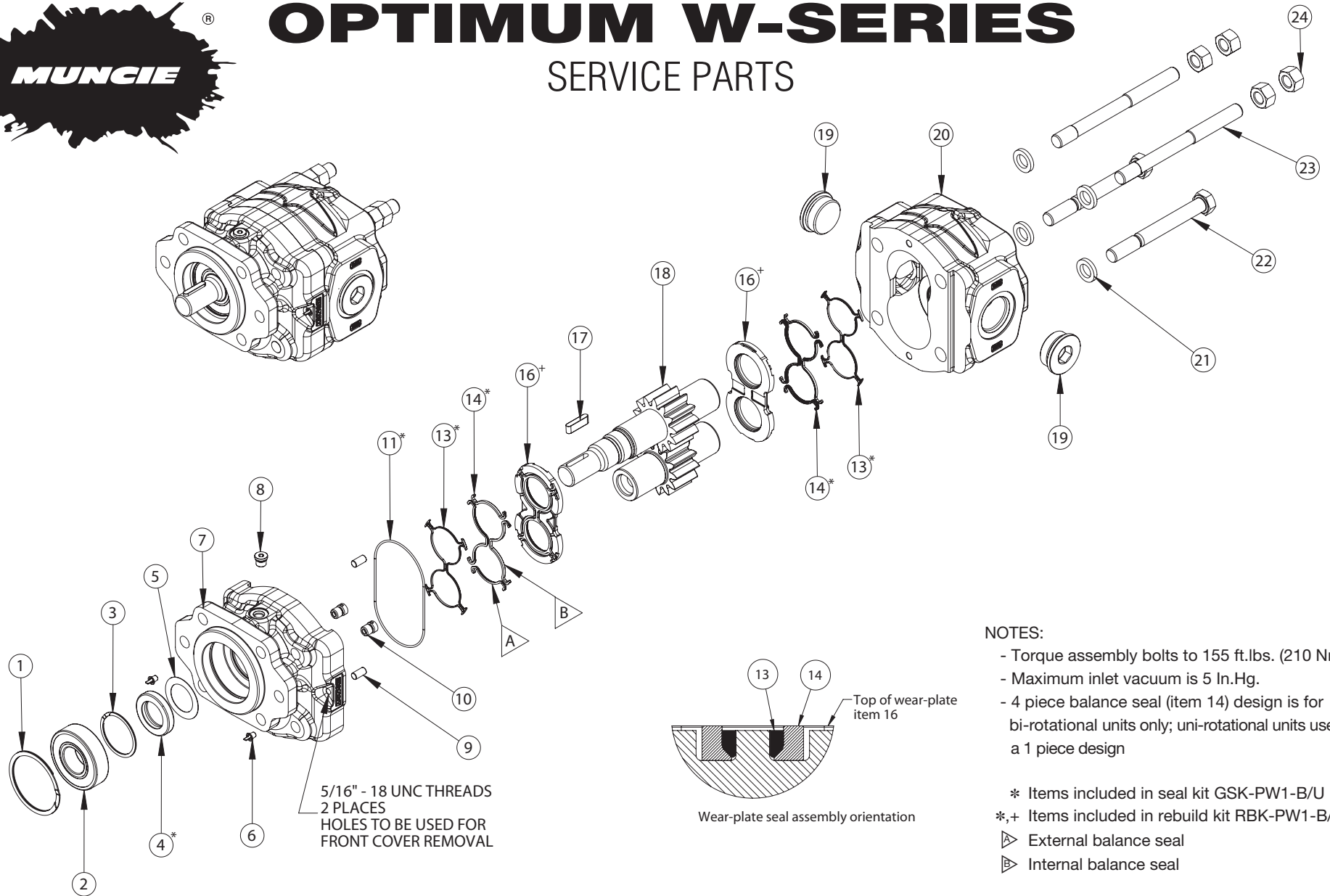




OPTIMUM W-SERIES

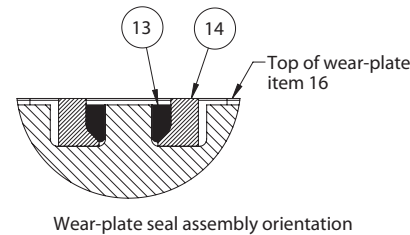
SERVICE PARTS



NOTES:

- Torque assembly bolts to 155 ft.lbs. (210 Nm)
- Maximum inlet vacuum is 5 In.Hg.
- 4 piece balance seal (item 14) design is for bi-rotational units only; uni-rotational units use a 1 piece design

- * Items included in seal kit GSK-PW1-B/U
- *,+ Items included in rebuild kit RBK-PW1-B/U
- ▷ External balance seal
- ▷ Internal balance seal



SP12-02 (Rev 04-14) Printed in the U.S.A.
 © Muncie Power Products, Inc. 2012

Muncie Power Products, Inc. *Member of the Interpump Hydraulics Group*
 General Offices and Distribution Center • P.O. Box 548 • Muncie, IN 47308-0548
 (765) 284-7721 • FAX (765) 284-6991 • E-mail info@munciepower.com
 Web site <http://www.munciepower.com>

Drive Products, Exclusive Agents for Canada, ISO Certified by an Accredited Registrar

