



OPTIMUM W SERIES SERVICE PARTS

NOTES:

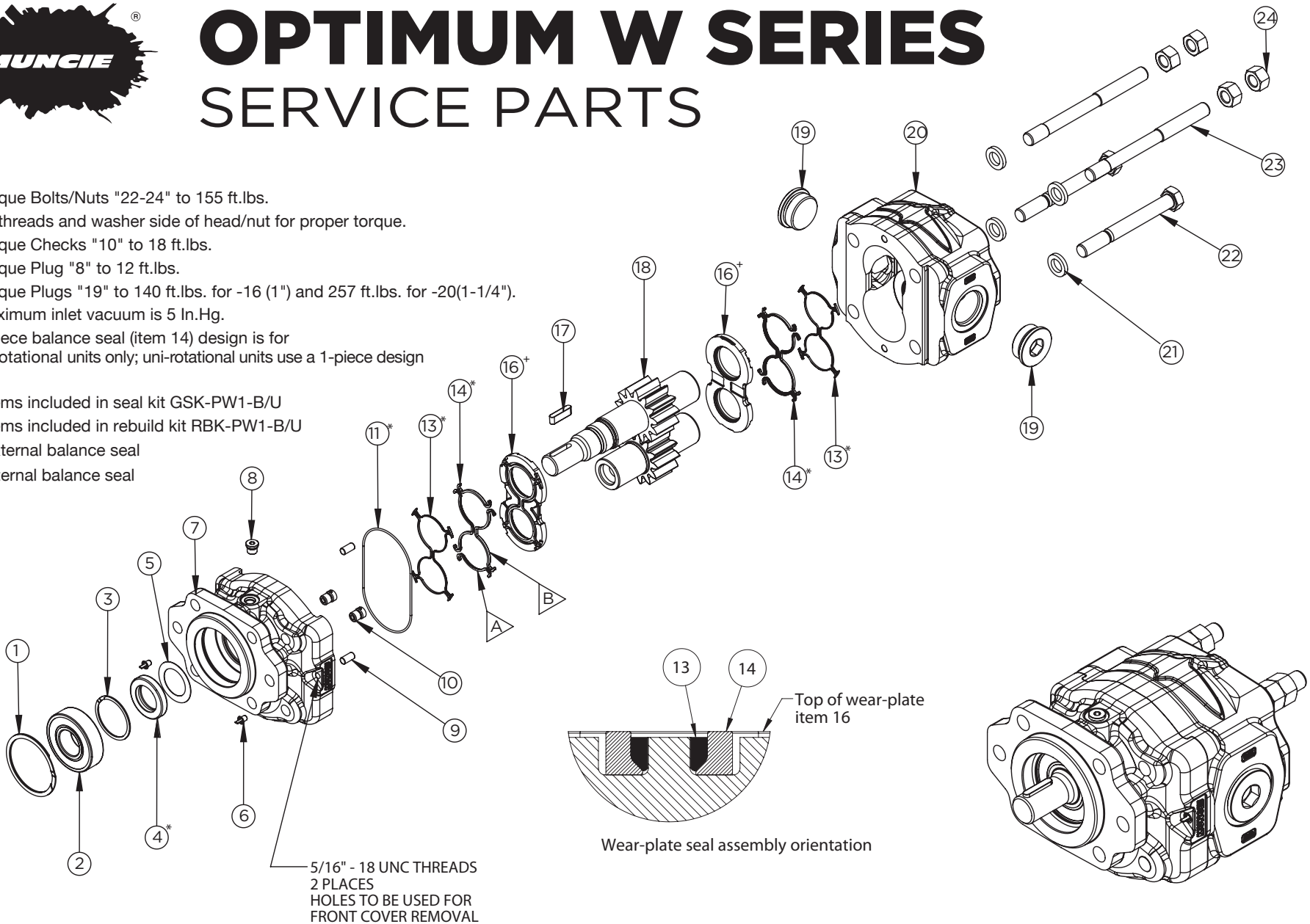
- Torque Bolts/Nuts "22-24" to 155 ft.lbs.
- Oil threads and washer side of head/nut for proper torque.
- Torque Checks "10" to 18 ft.lbs.
- Torque Plug "8" to 12 ft.lbs.
- Torque Plugs "19" to 140 ft.lbs. for -16 (1") and 257 ft.lbs. for -20(1-1/4").
- Maximum inlet vacuum is 5 In.Hg.
- 4 piece balance seal (item 14) design is for bi-rotational units only; uni-rotational units use a 1-piece design

* Items included in seal kit GSK-PW1-B/U

*,+ Items included in rebuild kit RBK-PW1-B/U

▶ External balance seal

▽ Internal balance seal



A Member of the Interpump Group

SP12-02 (Rev. 04-25)

201 East Jackson Street, Muncie, Indiana 47305
800-367-7867 • Fax: 765-284-6991 • info@munciepower.com

Specifications are subject to change without notice. Visit www.munciepower.com for warranties and literature. All rights reserved. © Muncie Power Products, Inc. (2012)

OPTIMUM W-SERIES SERVICE PARTS

Item Description	Qty...	Muncie Number	Item Description	Qty...	Muncie Number	Item Description.....	Qty....	Muncie Number
1		PL1-1001	Versatile ^B Gear Set, SAE "BB" 1.0" - 15T Spline			Split Flange Ports, Side Only		
2		PL1-1002	06 GPM	1	PW1-1016-S17-06TV-2	06 GPM, 1.50SF x 1.0SF	1	PW1-1125-06-FIVX
3		PL1-1004	08 GPM	1	PW1-1016-S17-08TV-2	08 GPM, 1.50SF x 1.0SF	1	PW1-1125-08-FIVX
4		PL1-1005	11 GPM.....	1	PW1-1016-S17-11TV-2	11 GPM, 1.50SF x 1.0SF	1	PW1-1125-11-FIVX
5		PX1-1002D	13 GPM.....	1	PW1-1016-S17-13TV-2	13 GPM, 1.50SF x 1.0SF	1	PW1-1125-13-FIVX
6		PX1-1022P	15 GPM.....	1	PW1-1016-S17-15TV-2	15 GPM, 2.0SF x 1.25SF	1	PW1-1125-15-FJCX
7 ^A			17 GPM.....	1	PW1-1016-S17-17TV-2	17 GPM, 2.0SF x 1.25SF	1	PW1-1125-17-FJCX
			19 GPM.....	1	PW1-1016-S17-19TV-2	19 GPM, 2.0SF x 1.25SF	1	PW1-1125-19-FJCX
			21 GPM.....	1	PW1-1016-S17-21TV-2	21 GPM, 2.0SF x 1.25SF	1	PW1-1125-21-FJCX
			Versatile ^B Gear Set, SAE "B" 7/8" Round			21 9/16 Washer	4	PW1-1029
			06 GPM	1	PW1-1016-K09-06TV-2	22 Capscrew		
			08 GPM	1	PW1-1016-K09-08TV-2	06 GPM 9/16-12 UNC x 4.50 ...2		PK1-1028-11
			11 GPM	1	PW1-1016-K09-11TV-2	08 GPM 9/16-12 UNC x 5.00 ...2		PK1-1028-15
			13 GPM	1	PW1-1016-K09-13TV-2	11 GPM 9/16-12 UNC x 5.00 ...2		PK1-1028-15
			15 GPM	1	PW1-1016-K09-15TV-2	13 GPM 9/16-12 UNC x 5.25 ...2		PK1-1028-17
			17 GPM	1	PW1-1016-K09-17TV-2	15 GPM 9/16-12 UNC x 5.25 ...2		PK1-1028-17
			19 GPM	1	PW1-1016-K09-19TV-2	17 GPM 9/16-12 UNC x 6.00 ...2		PK1-1028-C0600
			21 GPM	1	PW1-1016-K09-21TV-2	19 GPM 9/16-12 UNC x 6.25 ...2		PK1-1028-C0625
			Versatile ^B Gear Set, SAE "BB" 1.0" Round			21 GPM 9/16-12 UNC x 6.25 ...2		PK1-1028-C0625
			06 GPM	1	PW1-1016-K01-06TV-2	23 Stud		
			08 GPM	1	PW1-1016-K01-08TV-2	06 GPM 9/16-12 UNC x 6.50 ...2		PS1-1028-11S
			11 GPM	1	PW1-1016-K01-11TV-2	08 GPM 9/16-12 UNC x 6.75 ...2		PK1-1028-S0675
			13 GPM	1	PW1-1016-K01-13TV-2	11 GPM 9/16-12 UNC x 7.00 ...2		PK1-1028-437S
			15 GPM	1	PW1-1016-K01-15TV-2	13 GPM 9/16-12 UNC x 7.25 ...2		PK1-1028-S0725
			17 GPM	1	PW1-1016-K01-17TV-2	15 GPM 9/16-12 UNC x 7.50 ...2		PK1-1028-S0750
			19 GPM	1	PW1-1016-K01-19TV-2	17 GPM 9/16-12 UNC x 7.75 ...2		PK1-1028-S0775
			21 GPM	1	PW1-1016-K01-21TV-2	19 GPM 9/16-12 UNC x 8.00 ...2		PK1-1028-S0800
			Versatile ^B Gear Set, 3/4 - 11T Spline			21 GPM 9/16-12 UNC x 8.25 ...2		PK1-1028-S0825
			06 GPM	1	PW1-1016-S16-06TV-2	24 Nut 9/16-12 UNC	4 or 6	PK1-1020
			08 GPM	1	PW1-1016-S16-08TV-2			
			11 GPM	1	PW1-1016-S16-11TV-2			
			13 GPM	1	PW1-1016-S16-13TV-2			
			15 GPM	1	PW1-1016-S16-15TV-2			
			17 GPM	1	PW1-1016-S16-17TV-2			
			19 GPM	1	PW1-1016-S16-19TV-2			
			21 GPM	1	PW1-1016-S16-21TV-2			
			19 Steel Port Plug w/ O-Ring					
			-20 SAE	2	HHBP-20Z			
			-16 SAE	2	HHBP-16Z			
			20 ^A Gear Housing					
			SAE Ports, Side & Rear					
			06 GPM, -16 SAE	1	PW1-1125-06-SGIGI			
			08 GPM, -16 SAE	1	PW1-1125-08-SGIGI			
			11 GPM, -16 SAE	1	PW1-1125-11-SGIGI			
			13 GPM, -20 SAE	1	PW1-1125-13-SGTGT			
			15 GPM, -20 SAE	1	PW1-1125-15-SGTGT			
			17 GPM, -20 SAE	1	PW1-1125-17-SGTGT			
			19 GPM, -20 SAE	1	PW1-1125-19-SGTGT			
			21 GPM, -20 SAE	1	PW1-1125-21-SGTGT			
			06 GPM	1	PW1-1016-S02-06TV-2			
			08 GPM	1	PW1-1016-S02-08TV-2			
			11 GPM	1	PW1-1016-S02-11TV-2			
			13 GPM	1	PW1-1016-S02-13TV-2			
			15 GPM	1	PW1-1016-S02-15TV-2			
			17 GPM	1	PW1-1016-S02-17TV-2			
			19 GPM	1	PW1-1016-S02-19TV-2			
			21 GPM	1	PW1-1016-S02-21TV-2			
			Versatile ^B Gear Set, SAE "B" - 7/8 - 13T Spline					
			06 GPM	1	PW1-1016-S02-06TV-2			
			08 GPM	1	PW1-1016-S02-08TV-2			
			11 GPM	1	PW1-1016-S02-11TV-2			
			13 GPM	1	PW1-1016-S02-13TV-2			
			15 GPM	1	PW1-1016-S02-15TV-2			
			17 GPM	1	PW1-1016-S02-17TV-2			
			19 GPM	1	PW1-1016-S02-19TV-2			
			21 GPM	1	PW1-1016-S02-21TV-2			
			06 GPM	1	PW1-1016-S02-06TV-2			
			08 GPM	1	PW1-1016-S02-08TV-2			
			11 GPM	1	PW1-1016-S02-11TV-2			
			13 GPM	1	PW1-1016-S02-13TV-2			
			15 GPM	1	PW1-1016-S02-15TV-2			
			17 GPM	1	PW1-1016-S02-17TV-2			
			19 GPM	1	PW1-1016-S02-19TV-2			
			21 GPM	1	PW1-1016-S02-21TV-2			

KITS Description Muncie Number

- Seal Kit Seal Kit (includes items 4, 11, 13, 14)
- Bi-rotational seal kitkit..... GSK-PW1-B
- Uni-rotational seal kit..... kit..... GSK-PW1-U
- Rebuild Kit (includes items 4, 11, 13, 14, 16)
- Bi-rotational rebuild kitkit..... RBK-PW1-B
- Uni-rotational rebuild kit.....kit..... RBK-PW1-U

NOTES:

- A. Covers come shipped with bushings installed
- B. Versatile gear sets are machined for multiple pump configurations