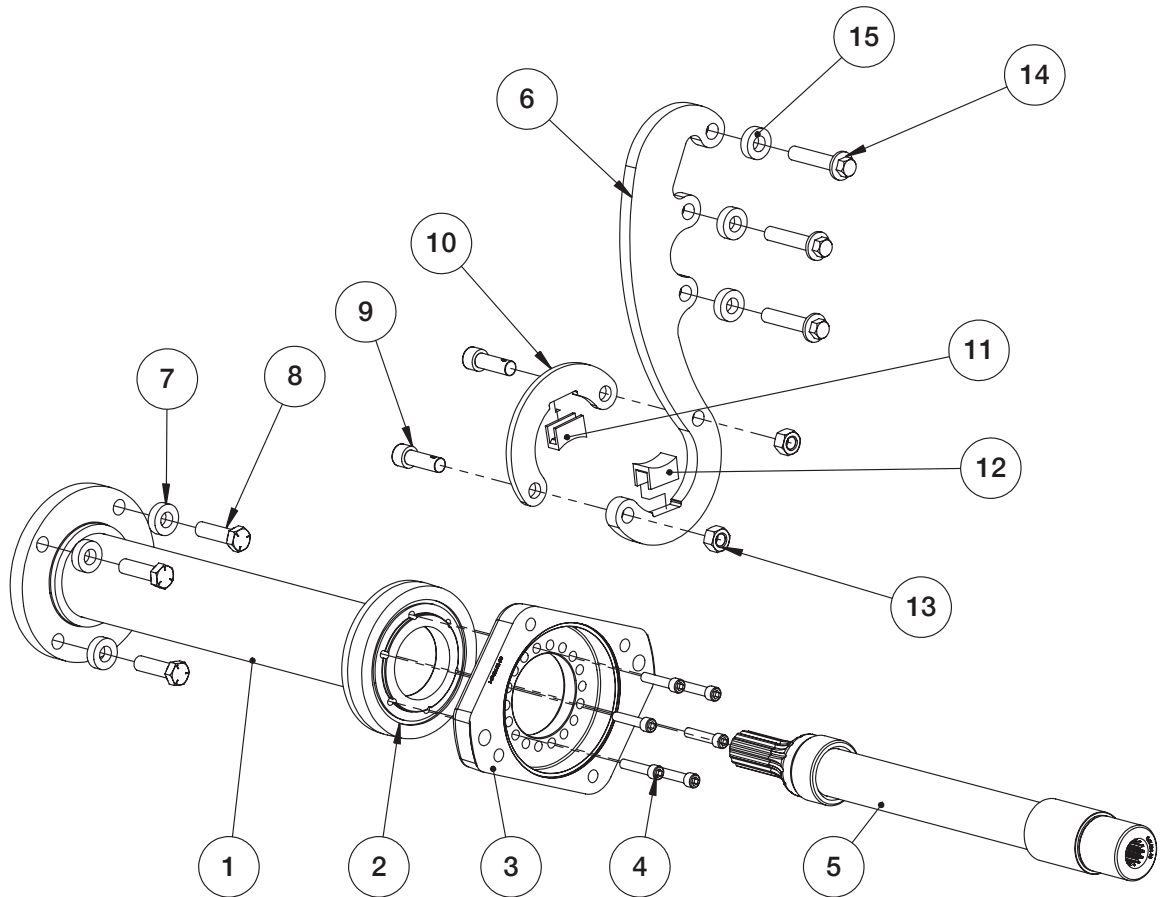




SERVICE PARTS LIST

EX DRIVE FOR TITAN™ 10-BOLT PTO

ALLISON 3000/4000/4700 TRANSMISSIONS



ITEM #	P/N	QTY	DESCRIPTION
1	49TA6165	1	SAE Housing 3000/4000 standard; MC1 PTO; 17.02" Flange to Flange
	49TA6166	1	DIN Housing 3000/4000 standard; MC1 PTO; 17.02" Flange to Flange
	49TA6173	1	SAE Housing 4700 standard; MC1 PTO; 25.46" Flange to Flange
	49TA6209	1	SAE Housing 3000 w/retarder/cooler; MC1 PTO; 20.36" Flange to Flange
	49TA6210	1	DIN Housing 3000 w/retarder/cooler; MC1 PTO; 20.36" Flange to Flange
	49TA6224	1	SAE Housing 4000 w/retarder/cooler; MC1 PTO; 23.00" Flange to Flange
	49TA6225	1	DIN Housing 4000 w/retarder/cooler; MC1 PTO; 23.00" Flange to Flange
2	12T43185	1	Flange O-Ring; SAE outputs
	12T36862	1	Flange O-Ring; DIN output
3	14T43150	1	SAE "B" 2/4-Bolt Output Flange
	14T43152	1	SAE "C" 2/4-Bolt Output Flange
	14T43151	1	DIN 5462 Output Flange
4	19T31577	6	Cap Screw for SAE "B", "BB" Flanges
	19M84478	6	Cap Screw for SAE "C" Flanges
	19T96512	6	Cap Screw for DIN Flanges

ITEM #	P/N	QTY	DESCRIPTION
5	06TA6176	1	SAE "B" Shaft 7/8"-13T; OAL 19.7"; 3000/4000 standard; MC1 PTO
	06TA6175	1	SAE "BB" 1.0"-15T Shaft; OAL 19.5"; 3000/4000 standard; MC1 PTO
	06TA5563	1	SAE "C" Shaft; OAL 19.8"; 3000/4000 standard; MC1 PTO
	06TA6178	1	DIN 5462 Shaft; OAL 20.2"; 3000/4000 standard; MC1 PTO
	06TA6169	1	SAE "B" 7/8"-13T Shaft; OAL 28.4"; 4700 standard; MC1 PTO
	06TA6170	1	SAE "BB" 1.0"-15T Shaft; OAL 28.3"; 4700 standard; MC1 PTO
	06TA6168	1	SAE "C" 1.25"-14T Shaft; OAL 28.6"; 4700 standard; MC1 PTO
	06TA6213	1	SAE "B" 7/8"-13T Shaft; OAL 23.3"; 3000 w/retarder/cooler; MC1 PTO
	06TA6214	1	SAE "BB" 1.0"-15T Shaft; OAL 23.2"; 3000 w/retarder/cooler; MC1 PTO
	06TA6211	1	SAE "C" 1.25"-14T Shaft; OAL 23.5"; 3000 w/retarder/cooler; MC1 PTO
	06TA6212	1	DIN 5462 Shaft; OAL 23.9"; 3000 w/retarder/cooler; MC1 PTO
	06TA6227	1	SAE "B" 7/8"-13T Shaft; OAL 25.9"; 4000 w/retarder/cooler; MC1 PTO
	06TA6228	1	SAE "BB" 1.0"-15T Shaft; OAL 26.5"; 4000 w/retarder/cooler; MC1 PTO
	06TA6226	1	SAE "C" 1.25"-14T Shaft; OAL 26.1"; 4000 w/retarder/cooler; MC1 PTO
	06TA6229	1	DIN 5462 Shaft; OAL 26.0"; 4000 w/retarder/cooler; MC1 PTO
6	58T62793	1	Bracket; 3000 Series Right Side; 1 arrangement
	58T63093	1	Bracket; 3000 Series Right Side; 2 arrangement
	58T62792	1	Bracket; 3000 Series Left Side; 3 arrangement
	58T63092	1	Bracket; 3000 Series Left Side; 4 arrangement
	58T62565	1	Bracket; 4000/4700 Series Left Side; 3 arrangement
	58T63094	1	Bracket; 4000 Series Left Side; 4 arrangement
	58T63191	1	Bracket; 4000/4700 Series Top Side; 5 arrangement

INSTALLATION KIT PART QUANTITIES

ITEM #	P/N	DESCRIPTION	A30XX-X***XX A30XX-X***CX	A30XX-X***RX	A4*XX-X***XX A4*XX-X***CX	A40XX-X***RX
			48TK6199	48TK6230	48TK6198	48TK6231
7	21T43218	Washer	4	4	4	4
8	19T43219	Hex Head Capscrew	4	4	4	4
9	19T40400	Bracket Capscrew	2	2	2	2
10	58T62566	Clamp	1	1	1	1
11	49T62576	Top Insert	1	1	1	1
12	49T62373	Bottom Insert	1	1	1	1
13	22T20521	Bracket Nut	2	2	2	2
14	19T64880	Mounting Bolt	-	3	-	-
	19T37098	Mounting Bolt	-	-	3	-
	19T43370	Mounting Bolt	3	-	-	3
15	21T64881	Washer	3	3	-	-
	21T61776	Washer	-	-	3	3
N/A	12TK5496	O-Ring Kit	1	1	1	1