



Muncie<sup>®</sup>  
Power  
Products

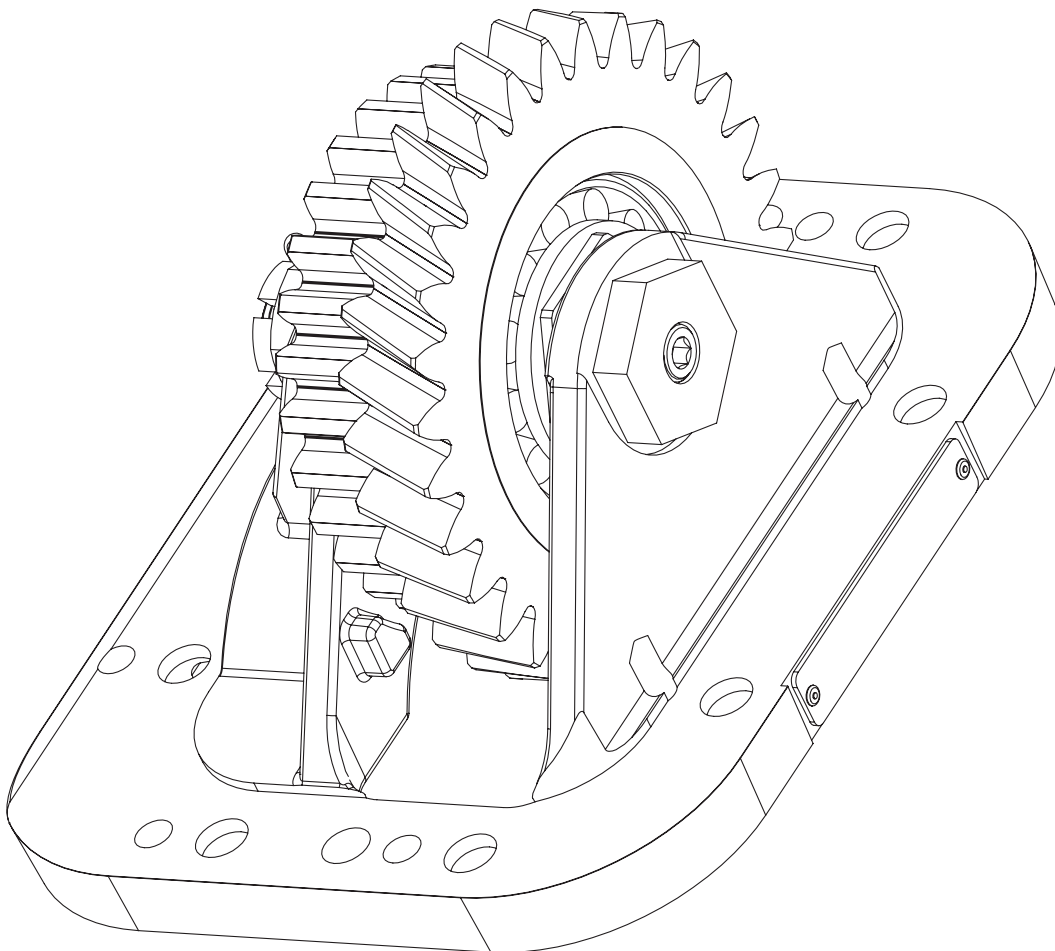
# DT12 PTO ADAPTER

## 40TA6479/40TA6480

---

PARTS LIST AND SERVICE MANUAL

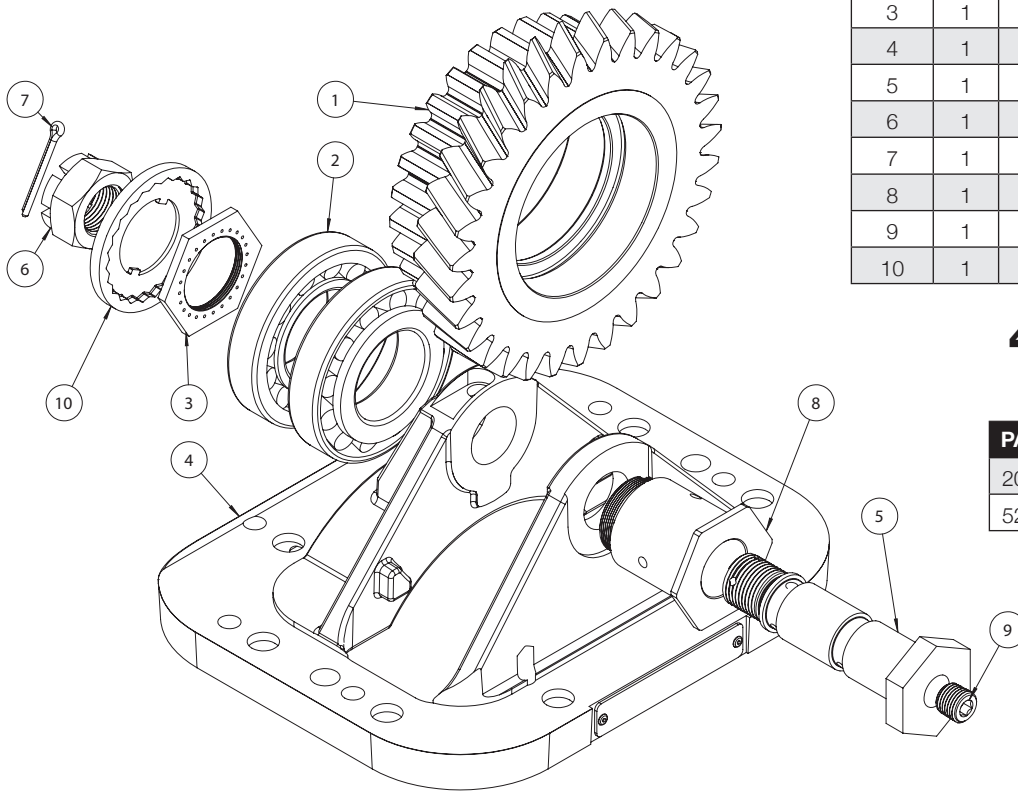
---



# Adapter Exploded View 40TA6479/40TA6480

TRANSMISSION	ADAPTER	ADAPTER GEAR P/N
OC (OHE & OV)	40TA6479	05T64697
OD (OVX)	40TA6480	05T64698

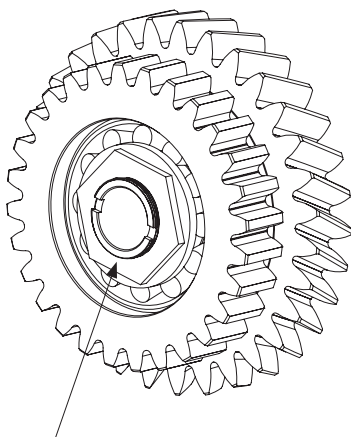
ITEM	QTY	PART NO.	DESCRIPTION
1	1	05T64697	Input Gear 40TA6479
1	1	05T64698	Input Gear 40TA6480
2	2	10T64927	Taper Roller Bearing
3	1	22T64924	Input Shaft Sleeve Nut
4	1	41T64934	DT12 Adapter Body
5	1	09T64912	Adapter Idler Shaft
6	1	22T64925	Slotted Hex Nut
7	1	26T64926	Cotter Pin
8	1	49T64911	Input Shaft Sleeve
9	1	25T64987	Pipe Plug
10	1	21T65022	Star Lock Washer



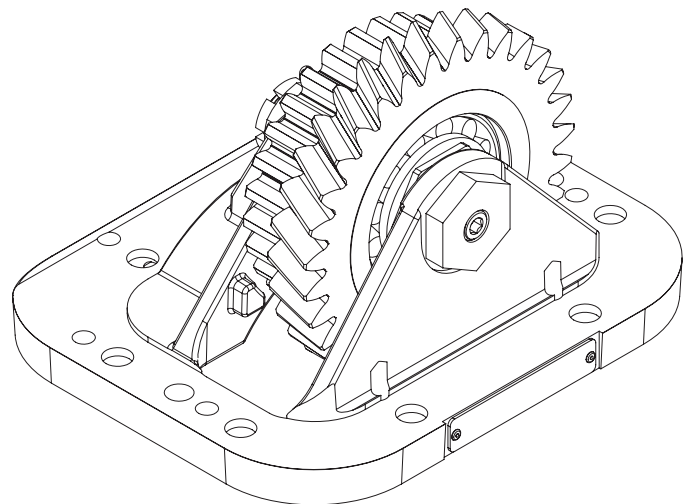
## 48TK6569 DT12 Intallation Kit

PART NO.	QTY	DESCRIPTION
20TK6570	1	DT12 Metric Bolt Kit
52TK6571	1	DT12 Gasket Kit

## Torque Specifications



Tighten sleeve nut (item 3) onto input shaft sleeve (item 8) approximately 8–10 ft.lbs., then loosen until star washer (item 10) lines up with nut and slots in sleeve



Tighten adapter idler shaft (item 5) to 40 ft.lbs., continue to tighten to align cotter pin (item 7) in slotted hex nut (item 6) with hole in idler shaft. Minimum torque is 40 ft.lbs.



A Member of the Interpump Group

SP21-03 (Rev. 12-21)

201 East Jackson Street, Muncie, Indiana 47305  
800-367-7867 • Fax: 765-284-6991 • info@munciepower.com

Specifications are subject to change without notice. Visit [www.munciepower.com](http://www.munciepower.com) for warranties and literature. All rights reserved. © Muncie Power Products, Inc. (2021)