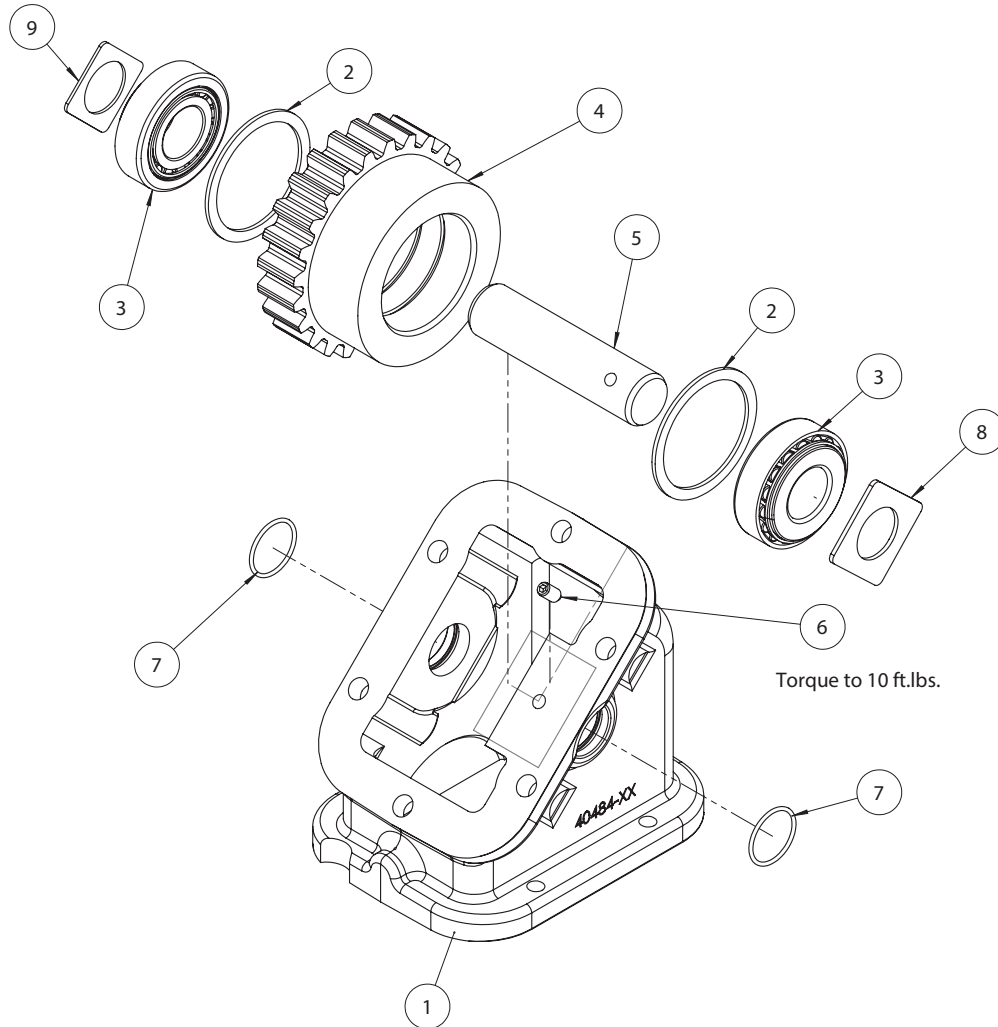




ADAPTER GEAR 40TU6845-1



ITEM #	P/N	QTY	DESCRIPTION
1	41T43029	1	Adapter Body – 45 Degree
2	24T35458	2	Internal Retaining Ring
3	10T43181	2	Bearing
4	05T35575	1	Gear
5	09T35576	1	Shaft
6	19T35609	1	Set Screw
7	12T35577	2	O-Ring
8	18T42646	1	Thrust Washer
9	18T43045	1	Shim as Required
	18T42646		
	18T43046		
	18T42647		
10	20MK0108	NS	Stud Kit – 40TU6845-1
	20MKM113	NS	Metric Stud Kit – 40TU6845-1M
11	52MK1000	NS	Gasket Kit

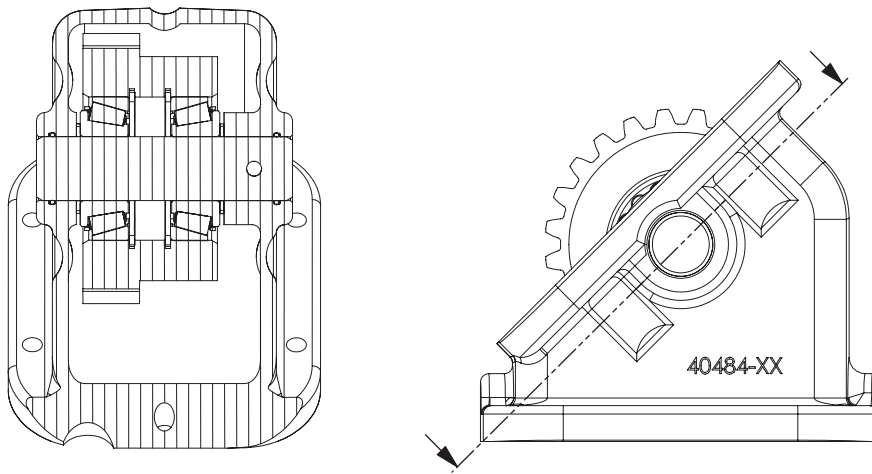
Assembly Instructions

Thrust washer (Item 8) used to obtain bearing endplay measurement of 0.002–0.006.

This is done by placing both bearing (Item 3) in gear. Place thrust washer (Item 8) on the set screw side of the gear and push shaft up to surface of gear face in the adapter housing.

Measure the overall space between the inside adapter face and the face of the bearing, and select the appropriate shim (Item 9) to fill this gap leaving endplay of 0.002–0.006 as listed above.

Completely insert the shaft and install the set screw in shaft hole. Torque to 10 ft.lbs.



Adapter Assembly