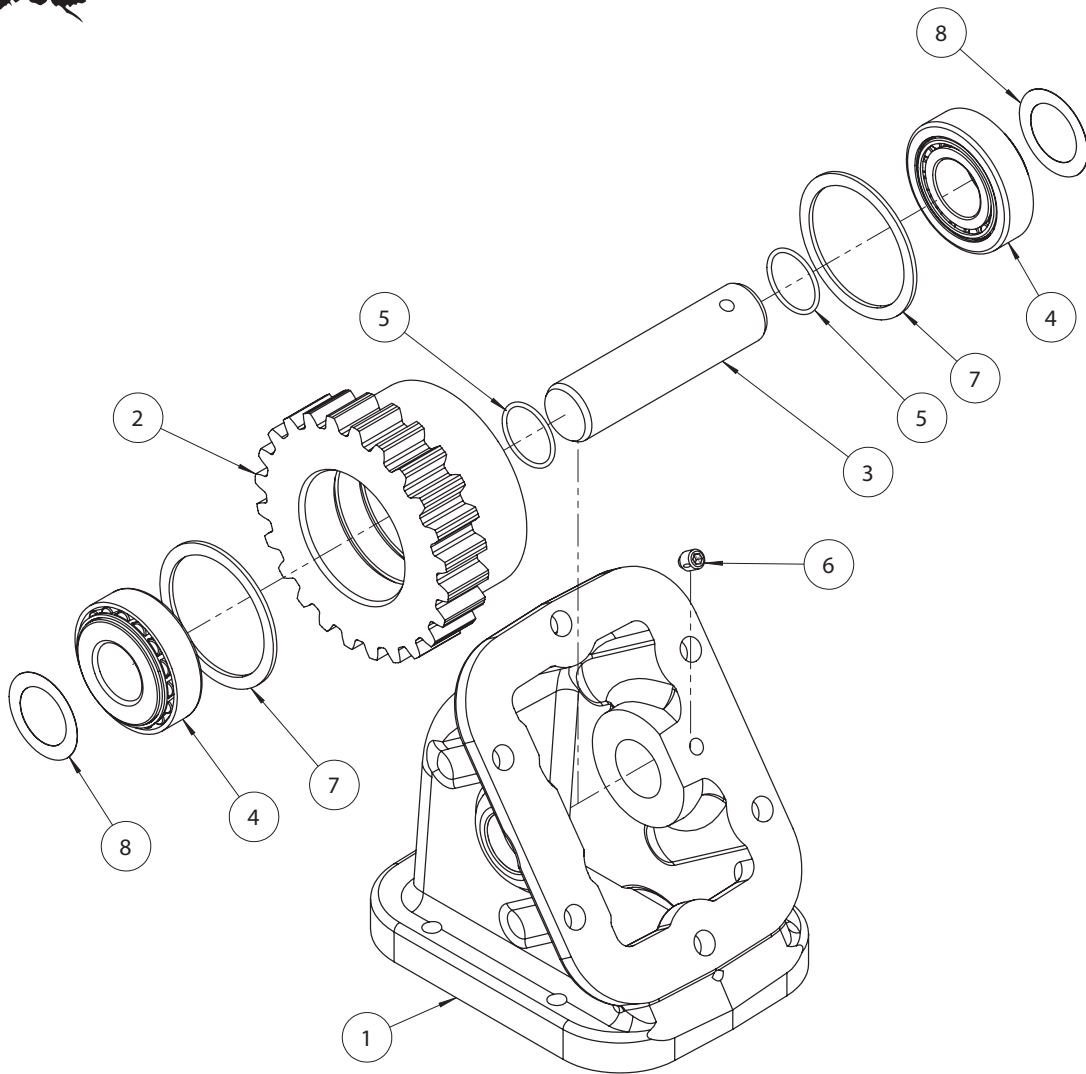




ADAPTER GEAR 40TU6855-1



ITEM #	P/N	QTY	DESCRIPTION
1	41T35579	1	Adapter Body
2	05T35575	1	Gear
3	09T35576	1	Idler Shaft
4	10T43181	2	Tapered Roller Bearing
5	12T35577	2	O-Ring
6	19T35609	1	Set Screw
7	24T35458	2	Snap Ring
8	18T35428	3	0.013 mm Shim (Blue) as Required
	18T35429	1	0.02 mm Shim (Pink) as Required
	18T35430	2	0.03 mm Shim (Orange) as Required
9	20MK0108	NS	Stud Kit
10	50M20048	NS	Box
11	52MK1000	NS	Instruction Kit

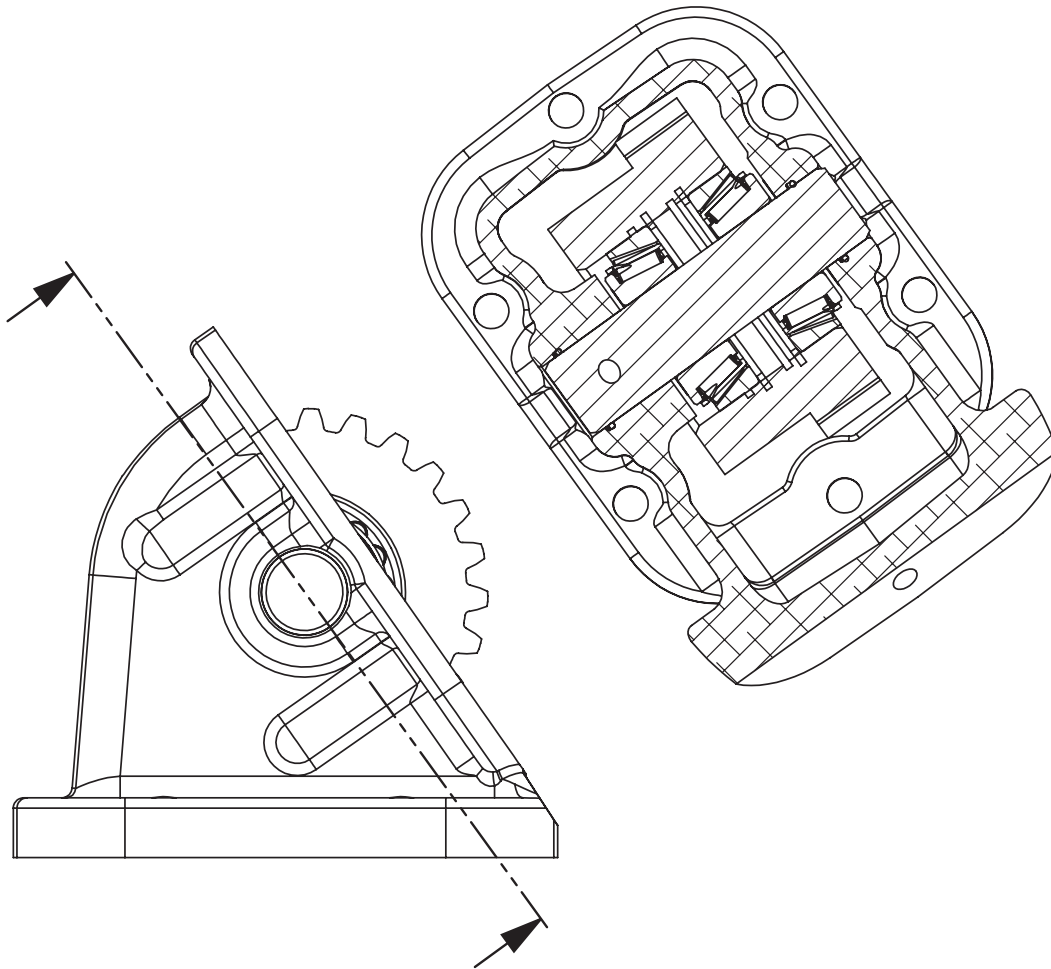
Assembly Instructions

The first Shim (Item 8) used to obtain bearing endplay measurement of 0.002–0.006.

This is done by placing both Bearings (Item 4) in the Gear (Item 2). Place the first Shim (Item 8) on the set screw side of the Gear (Item 2) and push Idler Shaft (Item 3) up to surface of Gear face in the Adapter Body (Item 1)

Measure the overall space between the inside Adapter face and the face of the Bearing, and select the appropriate opposite Shim (Item 8) if necessary, to fill this gap leaving endplay of 0.002–0.006 as listed above.

Completely insert the Idler Shaft (Item 3) and install the Set Screw (Item 6) in Idler Shaft hole. Torque to 10 ft.lbs.



Adapter Assembly



A Member of the Interpump Group

SP22-03 (Rev. 01-24)

201 East Jackson Street, Muncie, Indiana 47305
800-367-7867 • Fax: 765-284-6991 • info@munciepower.com

Specifications are subject to change without notice. Visit www.munciepower.com for warranties and literature. All rights reserved. © Muncie Power Products, Inc. (2022)