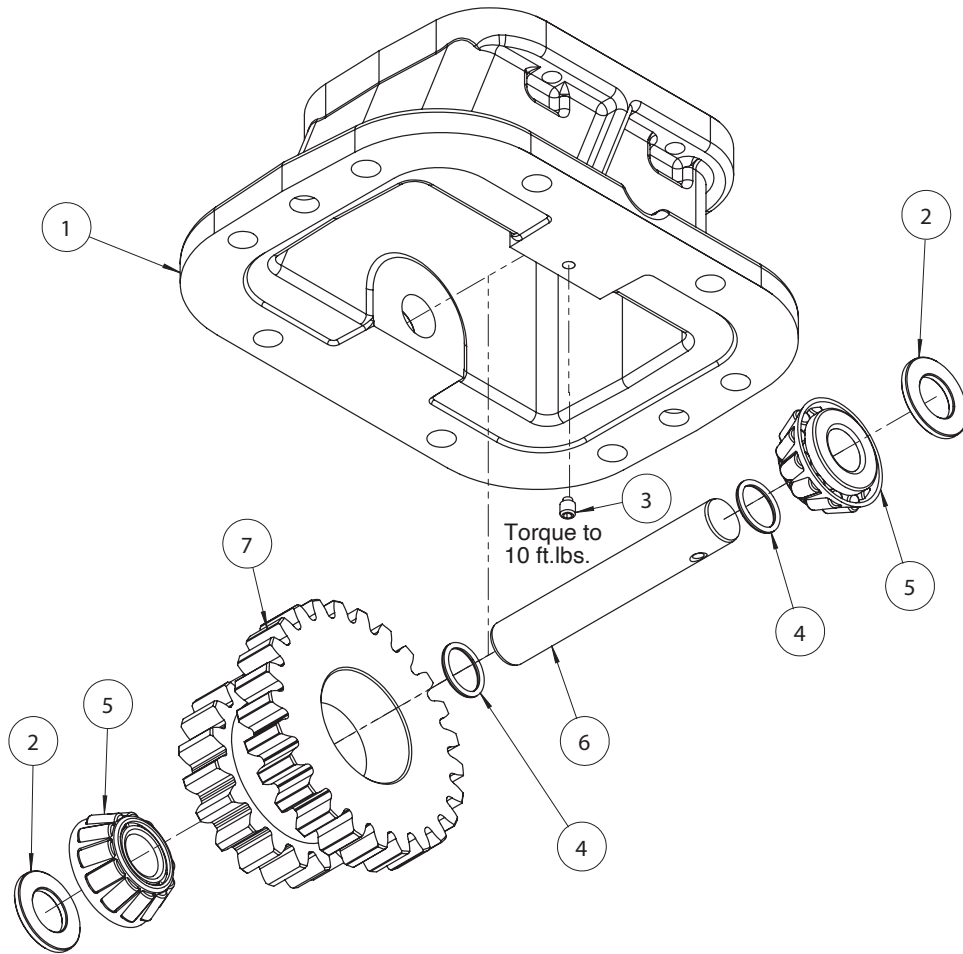




# ADAPTER GEAR 40TU6886-1



ITEM #	P/N	QTY	DESCRIPTION
1	41T36069	1	Adapter Body
2	18T35782	2	Spacer
3	19T36082	1	Set Screw 1/4-20 x 5/16L"
4	12T35774	2	O-Ring
5	10T35776	2	Bearing, Taperd Roller Cone
6	09T36071	1	Adapter Shaft
7	05T36070	1	Adapter Gear
8	20MK8808	NS	Stud Kit
9	50M20017	NS	Parcel Post CTN
10	52MK1994	NS	Install Kit

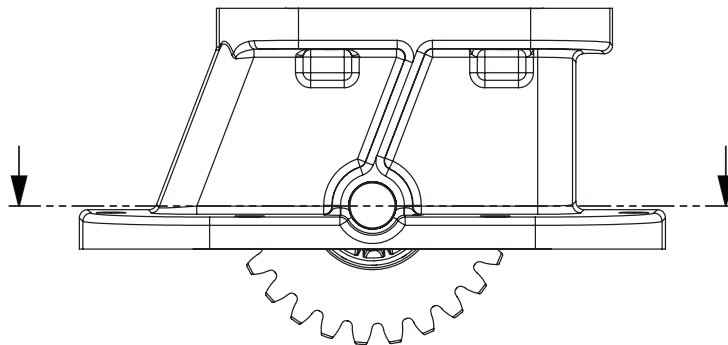
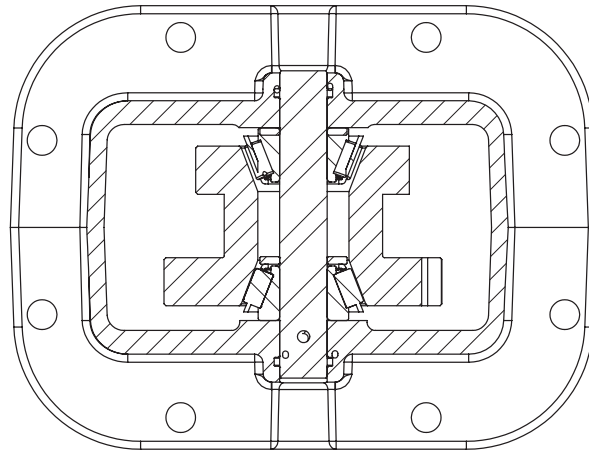
## Assembly Instructions

The first Spacer (Item 2) used to obtain bearing endplay measurement of 0.002–0.006.

Place both Bearings (Item 5) in the Adapter Gear (Item 7). Place the first Washer (Item 2) and O-Ring (Item 4) on the Set Screw side of the Adapter Gear and push the Adapter Shaft up to surface of gear face in the Adapter Housing.

Measure the overall space between the inside Adapter Gear face and the face of the Bearing, and select the appropriate opposite Spacer (Item 2) and O-Ring (Item 4) if necessary, to fill this gap leaving endplay of 0.002–0.006 as listed above.

Completely insert the Adapter Shaft (Item 6) and install the Set Screw (Item 3) in shaft hole. Torque to 10 ft.lbs.



**Adapter Assembly**



A Member of the Interpump Group

SP22-05 (Rev. 01-24)

201 East Jackson Street, Muncie, Indiana 47305  
800-367-7867 • Fax: 765-284-6991 • info@munciepower.com

Specifications are subject to change without notice. Visit [www.munciepower.com](http://www.munciepower.com) for warranties and literature. All rights reserved. © Muncie Power Products, Inc. (2023)