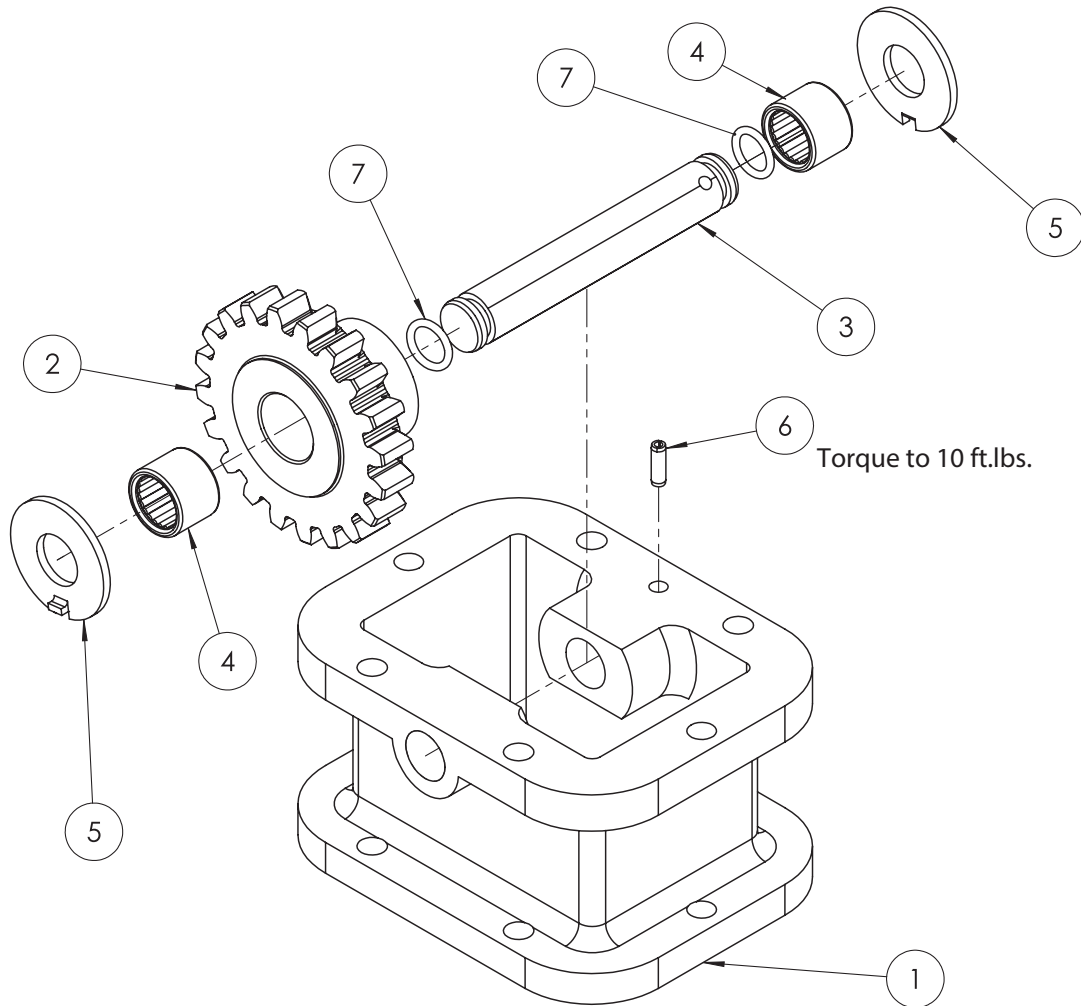




ADAPTER GEAR 40TA0541

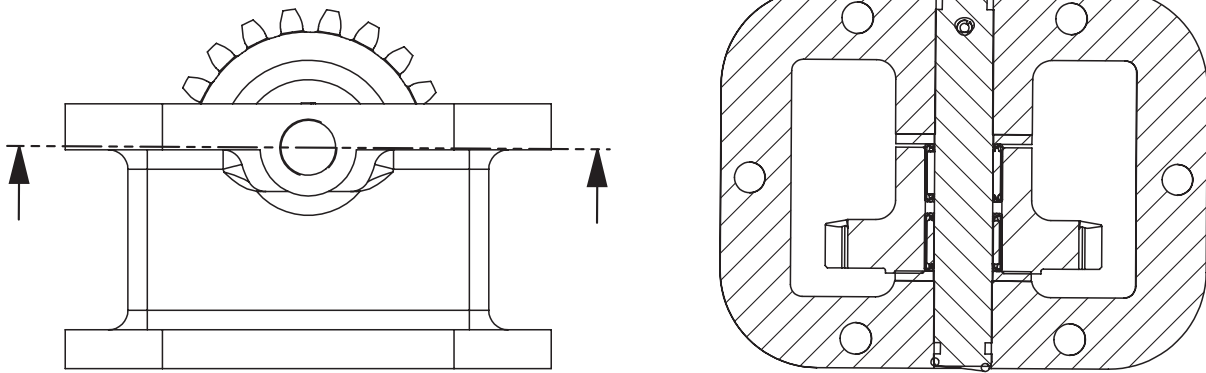


ITEM #	P/N	QTY	DESCRIPTION
1	41T34627	1	Adapter Housing
2	05T32736	1	Adapter Gear
3	09T36897	1	Adapter Shaft
4	10T24335	2	Bearing
5	21T21760	2	Thrust Washer
6	26T24874	1	Roll Pin
7	12T36899	2	O-Ring, Viton
8	20MK6600	Not Shown	Stud Kit
9	20MK6605	Not Shown	Stud Kit
10	50M20048	Not Shown	Pump Kit
11	52MK1000	Not Shown	Instruction Kit

Assembly Instructions

Place both Bearings (Item 4) in the Adapter Gear (Item 2). Place both Thrust Washers (Item 5) on either side of the Adapter Gear, with the flange outwards and below. Place both O-Rings (Item 7) at the ends of the Adapter Shaft (Item 3).

Completely insert the Adapter Shaft and install the Roll Pin (Item 6) in the shaft hole. Torque Roll Pin (Item 6) to 10 ft.lbs.



Adapter Assembly



A Member of the Interpump Group

SP23-01 (Rev. 12-23)

201 East Jackson Street, Muncie, Indiana 47305
800-367-7867 • Fax: 765-284-6991 • info@munciepower.com

Specifications are subject to change without notice. Visit www.munciepower.com for warranties and literature. All rights reserved. © Muncie Power Products, Inc. (2023)