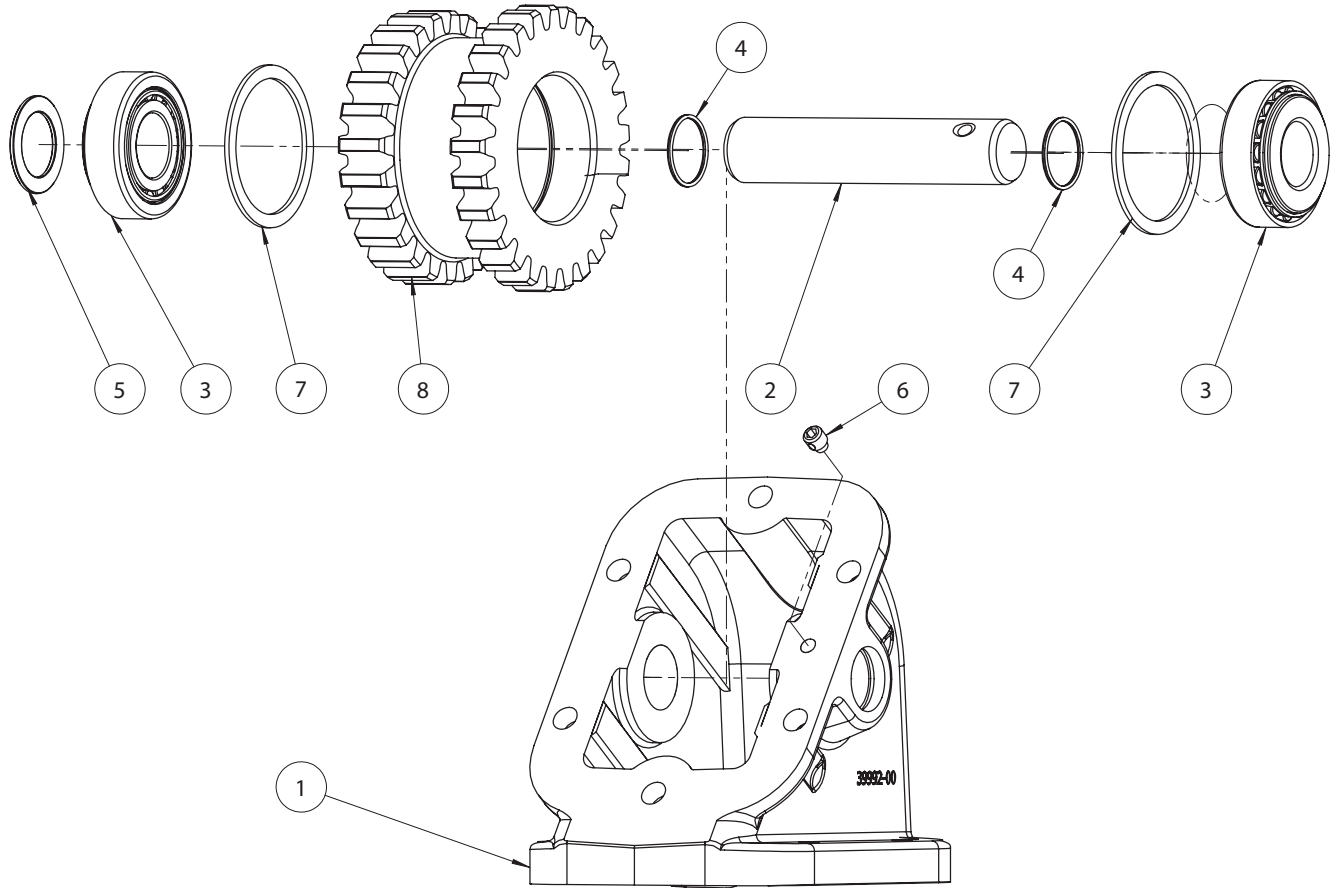




ADAPTER GEAR 40TF6855-1



ITEM #	P/N	QTY	DESCRIPTION
1	41T39993	1	Adapter Body
2	09T39326	1	Shaft
3	10T43181	2	Bearing
4	12T35577	2	O-Ring
5	18T39338	1	Spacer
6	19T35609	1	Set Screw
7	24T35458	2	Snap Ring
8	05T39850	1	Adapter Gear
9	20MK0108	NS	Stud Kit
10	50M20048	NS	Pump Kit
11	52TK4710	NS	Instruction Kit

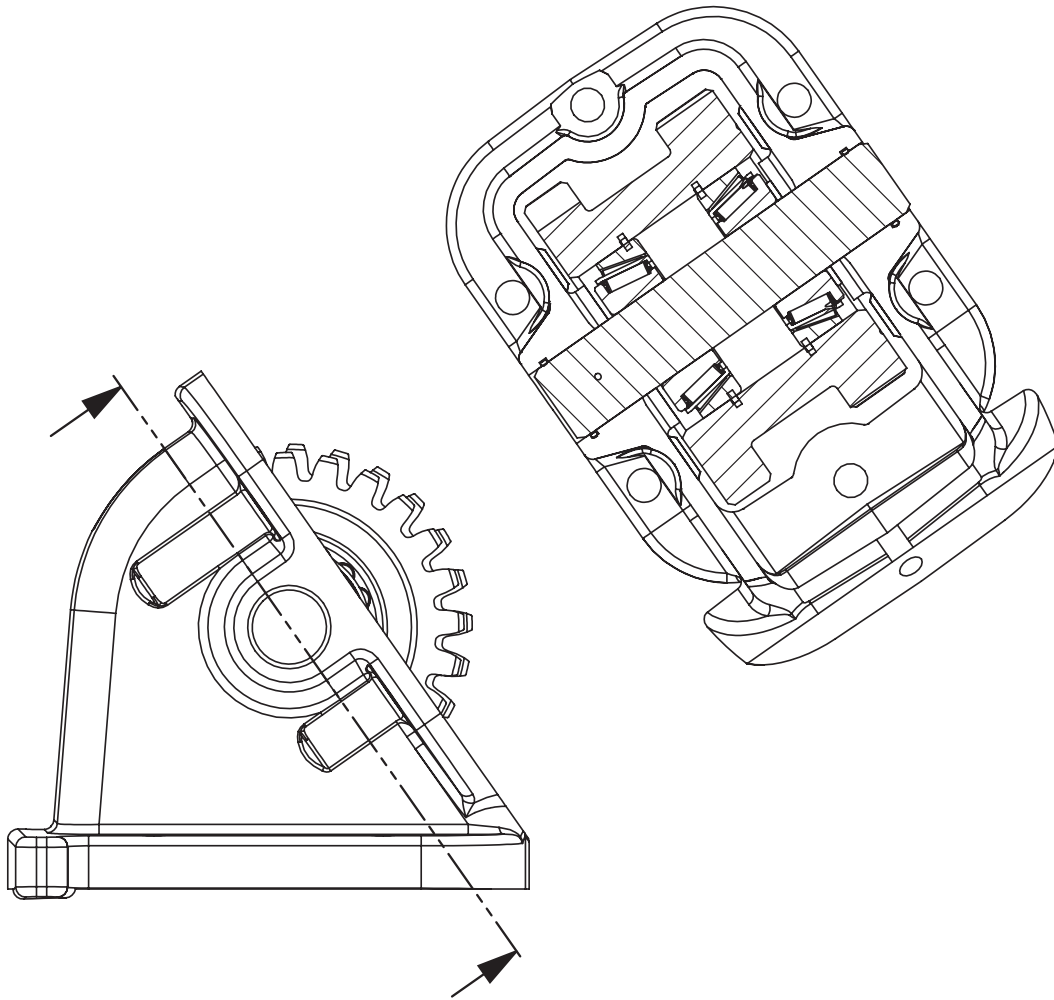
Assembly Instructions

Place the O-Rings (Item 4) in the openings of the Adapter Body (Item 1).

Place both Bearings (Item 3) in the Gear (Item 8). Place the Snap Rings (Item 7) around the inserted Bearings (Item 3).

Place the Spacer (Item 5) opposite to the set screw side of the Gear (Item 8) and push Idler Shaft (Item 2) up to the surface of the Gear face in the Adapter Body (Item 1).

Insert the Gear Assembly into the Adapter body (item 1) and completely insert the Idler Shaft (Item 2) through the assembled parts, and install the Set Screw (Item 6) in Idler Shaft hole. Torque to 10 ft.lbs.



Adapter Assembly



A Member of the Interpump Group

SP24-01 (Rev. 04-24)

201 East Jackson Street, Muncie, Indiana 47305
800-367-7867 • Fax: 765-284-6991 • info@munciepower.com

Specifications are subject to change without notice. Visit www.munciepower.com for warranties and literature. All rights reserved. © Muncie Power Products, Inc. (2022)