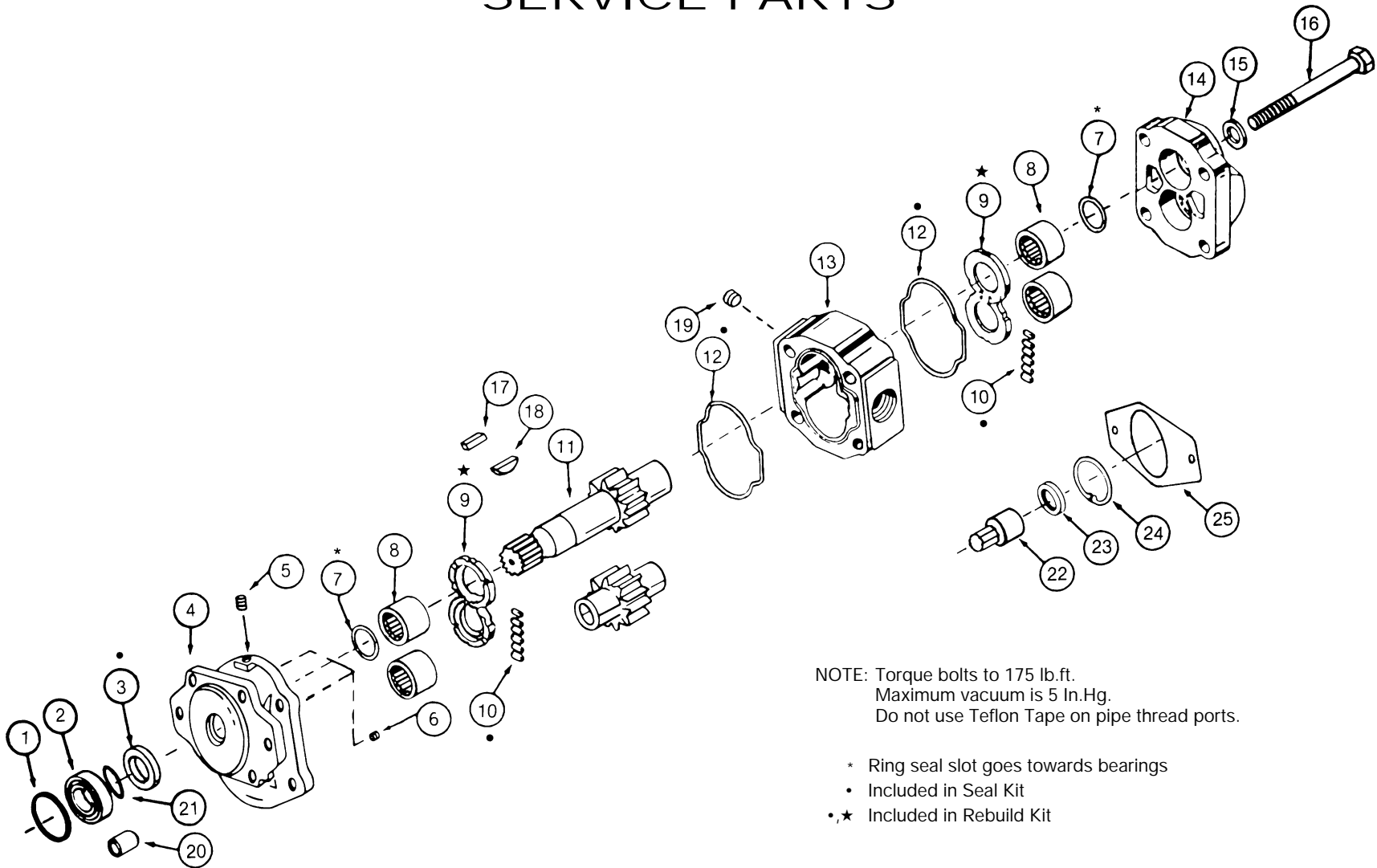


# K SERIES PUMP/MOTOR SERVICE PARTS



NOTE: Torque bolts to 175 lb.ft.  
Maximum vacuum is 5 In.Hg.  
Do not use Teflon Tape on pipe thread ports.

- \* Ring seal slot goes towards bearings
- Included in Seal Kit
- ★ Included in Rebuild Kit



Muncie Power Products, Inc. General Offices and Distribution Center • P.O. Box 548 • Muncie, IN 47308-0548  
(765) 284-7721 • FAX (765) 284-6991 • E-mail info@munciepower.com • Web site <http://www.munciepower.com>  
Drive Products, Inc., Toronto, Exclusive Agents for Canada

# K SERIES PUMP/MOTOR SERVICE PARTS

Item	Description	Qty	Muncie Number
1	Spacer Snap Ring	1	PS-1004-D
2	O.B. Bearing (7/8 Rnd)	1	PK-1002
3	• Shaft Seal	1	
	High Pressure		PS-1005
	Low Pressure		PK-1005
4	Front Cover	1	
	SAE "A" Pad		PK-1007-A
	SAE "B" Pad		PK-1007-D
	Remote Pad		PK-1007-R
	Remote Pad Clutch		PK-1007-C
	Front Cover (Short)	1	
	SAE "B" 2-Bolt		PKS-1007-D
	"G" Flange		PKS-1007-G
5	Pipe Plug (1/4 in.)	1	HHPP-4
6	Check Assembly	2	PS-1010
7	Ring Seal	4	PS-1008
8	Bearing	4	PS-1013
9	★ Wear Plate	2	PS-1014
10	• Pocket Seal (12 pcs.) (3" strip)	1	PS-1009
11	Gear Set	1	
	13T Spline	4 GPM	PK-1016-S-4-2
		6 GPM	PS-1016-S-6-2*
		8 GPM	PK-1016-S-8-2
		11 GPM	PK-1016-S-11-2
		13 GPM	PS-1016-S-11-2*
		15 GPM	PK-1016-S-15-2
		17 GPM	PS-1016-S-15-2*
	7/8 Rnd. Key	4 GPM	PK-1016-K-4-2
		6 GPM	PK-1016-K-6-2
		8 GPM	PK-1016-K-8-2
		11 GPM	PK-1016-K-11-2
		13 GPM	PK-1016-K-13-2
		15 GPM	PK-1016-K-15-2
		17 GPM	PK-1016-K-17-2
	9T Spline	4 GPM	PK-1016-A-4-2
		6 GPM	PK-1016-A-6-2
		8 GPM	PK-1016-A-8-2

Item	Description	Qty	Muncie Number
11	Gear Set (Continued)		
	11T Spline	8 GPM	PK-1016-S16-8-2
		11 GPM	PK-1016-S16-11-2
		13 GPM	PK-1016-S16-13-2
	1 in. Rnd. Key	4 GPM	PK-1016-K1-4-2
		6 GPM	PK-1016-K1-6-2
		8 GPM	PK-1016-K1-8-2
		11 GPM	PK-1016-K1-11-2
		13 GPM	PK-1016-K1-13-2
		15 GPM	PK-1016-K1-15-2
		17 GPM	PK-1016-K1-17-2
	Tapered	13 GPM	PK-1016-T-13-2
	13T Spline Tandem	6 GPM	PK-1016-S-6-2TV
		8 GPM	PK-1016-S-8-2TV
		11 GPM	PK-1016-S-11-2TV
		13 GPM	PK-1016-S-13-2TV
	7/8 Rnd. Key Tand.	6 GPM	PK-1016-K-6-2TV
		8 GPM	PK-1016-K-8-2TV
		11 GPM	PK-1016-K-11-2TV
		13 GPM	PK-1016-K-13-2TV
	13T Spline (Short)	4 GPM	PKS-1016-S-4-2
		6 GPM	PKS-1016-S-6-2
		8 GPM	PKS-1016-S-8-2
		11 GPM	PKS-1016-S-11-2
		13 GPM	PKS-1016-S-13-2
		15 GPM	PKS-1016-S-15-2
		17 GPM	PKS-1016-S-17-2
12	• Body O-Ring	2	PS-1015
13	Pump Housing (N.P.T.)	1	
	1/2 N.P.T.	4 GPM	PK-1025-4P
	3/4 N.P.T.	6 GPM	PK-1025-6P
	1 N.P.T.	8 GPM	PK-1025-8P
	1 N.P.T.	11 GPM	PK-1025-11P
	1-1/4 N.P.T.	13 GPM	PK-1025-13P
	1-1/4 N.P.T.	15 GPM	PK-1025-15P
	1-1/4 N.P.T.	17 GPM	PK-1025-17P
	Pump Housing (SAE)	1	
	5/8 SAE	4 GPM	PK-1025-4S
	7/8 SAE	6 GPM	PK-1025-6S
	7/8 SAE	8 GPM	PK-1025-8S
	1 SAE	11 GPM	PK-1025-11S
	1-1/4 SAE	13 GPM	PK-1025-13S
	1-1/4 SAE	15 GPM	PK-1025-15S
	1-1/4 SAE	17 GPM	PK-1025-17S

Item	Description	Qty	Muncie Number
14	Rear Cover	1	
	Rear Cover (N.P.T.)		PK-1026-P
	Rear Cover (SAE)		PK-1026-S
	Rear Cover (Versatile)		PL-1026-TV
15	Lock Washer	4	PS-1029
16	Capscrew	4	
	4 GPM		PS-1028-6
	6 GPM		PK-1028-6
	8 GPM		PK-1028-11
	11 GPM		PK-1028-11
	13 GPM		PS-1028-11
	15 GPM		PS-1028-11
	17 GPM		PS-1028-15
17	Key	1	PK-1017
18	Woodruff Key	1	PH-1017-W
19	Pipe Plug	2	
	1/2 Inch		HHPP-8
	3/4 Inch		HHPP-12
	1 Inch		HHPP-16
	1-1/4 Inch		HHPP-20
20	Seal Spacer	1	
	Seal Spacer (All But Short)		PK-1002-D
	Seal Spacer (Short)		PKS-1002-D
21	Seal Retainer Ring	1	PS-1001-D
	Spacer Snap Ring	1	PS-1004-D
22	Connection Shaft	1	PK-1033-TV
23	Connection Shaft Seal	1	PL-1005
24	Conn. Shaft Seal Snap Ring	1	PL-1004
25	Rear Flange Gasket	1	PL-1032-TV
	N.S. Nut (Tapered Only)	1	PH-1020

KITS	Description	Muncie Number
	Seal & O-Ring Kit •	GSKPK-2
	Rebuild Kit •,★	RBKPK-2
	Bearing Kit	PS-1013-K

\* Common parts with S Series Hoist Pump