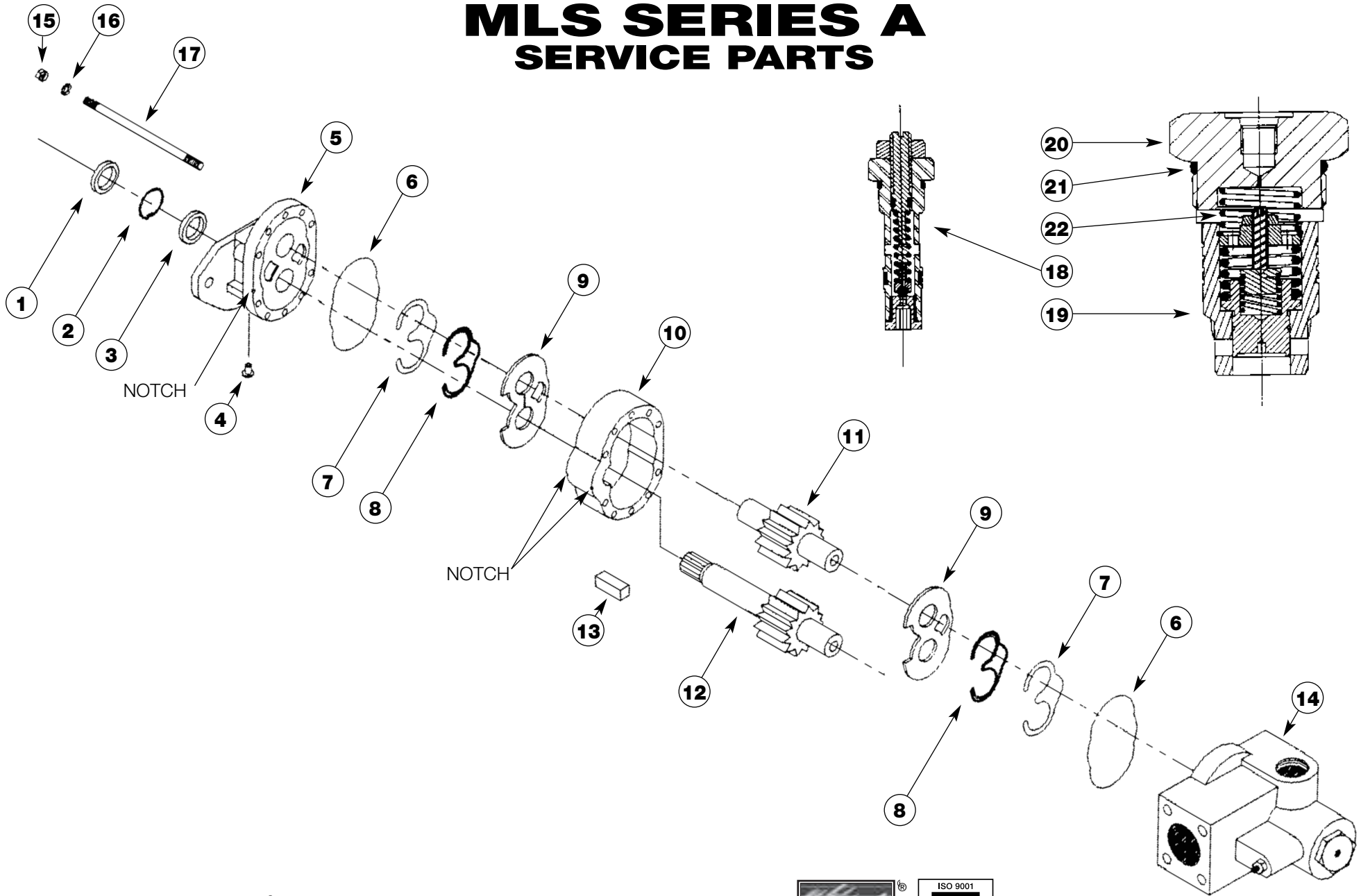


MLS SERIES A SERVICE PARTS



SP93-02 (Rev. 7-07) Printed in the U.S.A.
© Muncie Power Products, Inc. 2007

Muncie Power Products, Inc. Member of the Interpump Hydraulics Group
General Offices and Distribution Center • P.O. Box 548 • Muncie, IN 47308-0548
(765) 284-7721 • FAX (765) 284-6991 • E-mail info@munciepower.com
Web site <http://www.munciepower.com>

Drive Products, Exclusive Agents for Canada, ISO Certified by an Accredited Registrar



MLS SERIES A SERVICE PARTS

Item	Description	Qty	Muncie Number
1	Outside Shaft Seal	1	LSA-1003
2	Snap Ring	1	LSA-1001
3	Inside Shaft Seal	1	LSA-1005
4	Press Plug	1	LSA-1022
5	*Front Cover (SAE B 2-Bolt)	1	
	Clockwise Rotation		LSA-1007-DR
	Counterclockwise Rotation		LSA-1007-DL
6	Body Seal	2	LSA-1012
7	Balance Seal (Rubber)	2	LSA-1008
8	Backup Seal (Plastic)	2	LSA-1009
9	Wearplate	2	LSA-1014
10	Body	1	
	6 GPM		LSA-1025-6
	8 GPM		LSA-1025-8
	9 GPM		LSA-1025-9
	11 GPM		LSA-1025-11
	13 GPM		LSA-1025-13
	14 GPM		LSA-1025-14
	16 GPM		LSA-1025-16
	18 GPM		LSA-1025-18
	20 GPM		LSA-1025-20
	23 GPM		LSA-1025-23
11	Driven Gear	1	
	6 GPM		LSA-1023-6
	8 GPM		LSA-1023-8
	9 GPM		LSA-1023-9
	11 GPM		LSA-1023-11
	13 GPM		LSA-1023-13
	14 GPM		LSA-1023-14
	16 GPM		LSA-1023-16
	18 GPM		LSA-1023-18
	20 GPM		LSA-1023-20
	23 GPM		LSA-1023-23

Item	Description	Qty	Muncie Number
12	Drive Gear	1	
	1.00 rnd - 6 GPM		LSA-1016K1-6
	1.00 rnd - 8 GPM		LSA-1016K1-8
	1.00 rnd - 9 GPM		LSA-1016K1-9
	1.00 rnd - 11 GPM		LSA-1016K1-11
	1.00 rnd - 13 GPM		LSA-1016K1-13
	1.00 rnd - 14 GPM		LSA-1016K1-14
	1.00 rnd - 16 GPM		LSA-1016K1-16
	1.00 rnd - 18 GPM		LSA-1016K1-18
	1.00 rnd - 20 GPM		LSA-1016K1-20
	1.00 rnd - 23 GPM		LSA-1016K1-23
	7/8 - 13T - 6 GPM		LSA-1016S2-6
	7/8 - 13T - 8 GPM		LSA-1016S2-8
	7/8 - 13T - 9 GPM		LSA-1016S2-9
	7/8 - 13T - 11 GPM		LSA-1016S2-11
	7/8 - 13T - 13 GPM		LSA-1016S2-13
	7/8 - 13T - 14 GPM		LSA-1016S2-14
	7/8 - 13T - 16 GPM		LSA-1016S2-16
	7/8 - 13T - 18 GPM		LSA-1016S2-18
	7/8 - 13T - 20 GPM		LSA-1016S2-20
	7/8 - 13T - 23 GPM		LSA-1016S2-23
13	Key	1	LSA-1017
14	*Rear Cover	1	LSA-1026
15	Assembly Nut	8	LSA-1020
16	Lockwasher	8	LSA-1029
17	Assembly Stud	8	
	6 GPM		LSA-1028-6S
	8 GPM		LSA-1028-8S
	9 GPM		LSA-1028-9S
	11 GPM		LSA-1028-11S
	13 GPM		LSA-1028-13S
	14 GPM		LSA-1028-14S
	16 GPM		LSA-1028-16S
	18 GPM		LSA-1028-18S
	20 GPM		LSA-1028-20S
	23 GPM		LSA-1028-23S
18	Relief Cartridge	1	LSA-1231V
	Relief Cartridge Blanking Plug	1	LSA-1231V
19	**Load Sense Cartridge	1	LSA-1235V
20	Load Sense Cap	1	LSA-1027
21	Load Sense Cap O-Ring	1	LSA-1006
22	Load Sense Bypass Spring	1	
	Std.		LSA-1034
	45 Lb.		LSA-1034H
	200 Lb.		LSA-1034S

* Includes bushings pressed into the housing.

** Only new style cartridges with seat at high angle vs. straight is available.

Seal Kit: GSK-LSA

Rebuild Kit: RBK-LSA

Miscellaneous:

Stud Torque: 25 - 35 ft.lb.

Nut Torque: 65 - 75 ft.lb.

All castings are notched and must be aligned to assure proper alignment.