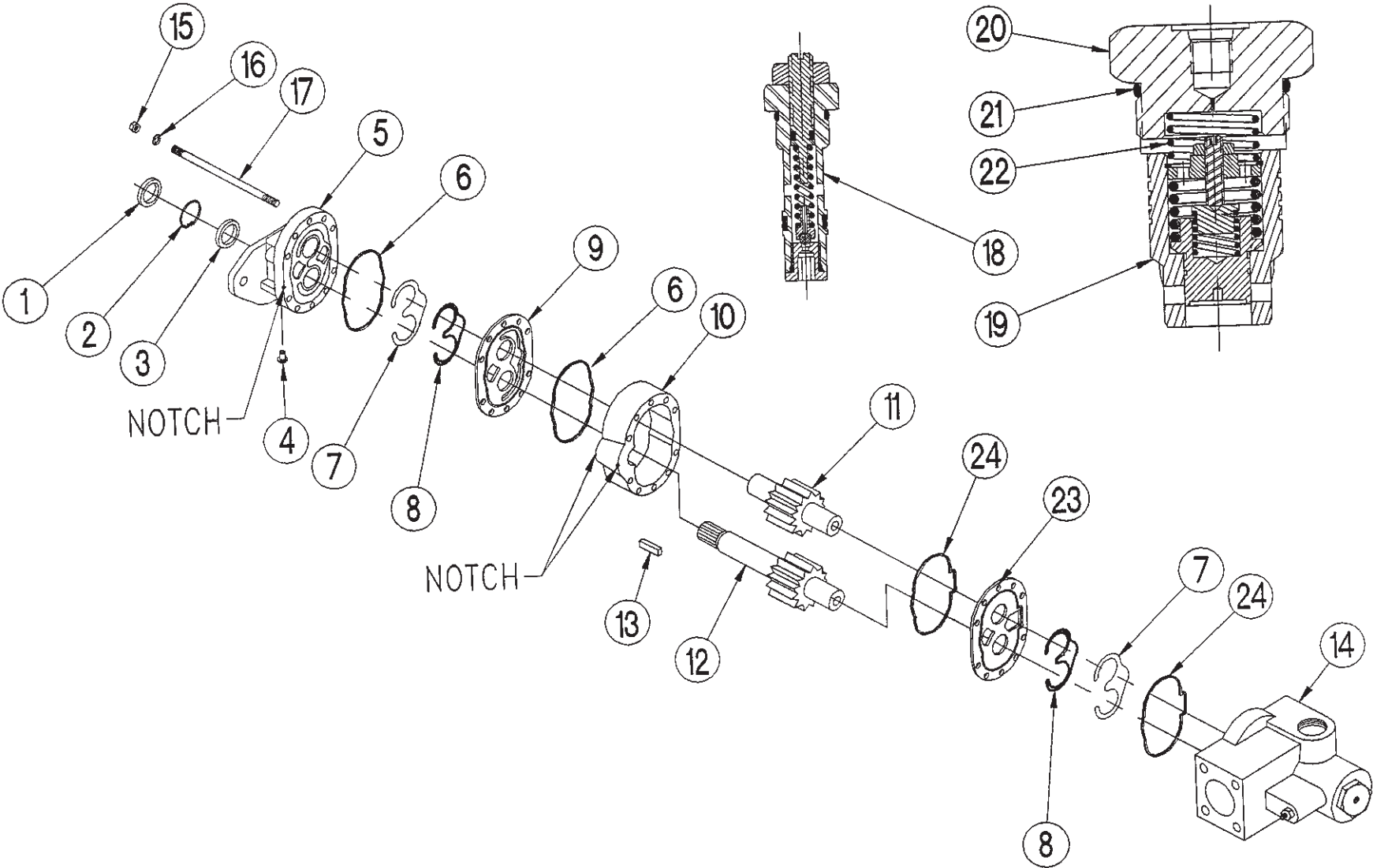


# MLS SERIES B SERVICE PARTS



SP95-02 (Rev. 1-00) Printed in the U.S.A.  
© Muncie Power Products, Inc. 2000

**Muncie Power Products, Inc.** Member of the Interpump Hydraulics Group  
 General Offices and Distribution Center • P.O. Box 548 • Muncie, IN 47308-0548  
 (765) 284-7721 • FAX (765) 284-6991 • E-mail info@munciepower.com  
 Web site <http://www.munciepower.com>

Drive Products, Exclusive Agents for Canada, ISO Certified by an Accredited Registrar



# MLS SERIES B SERVICE PARTS

Item	Description	Qty	Muncie Number
1	Outside Shaft Seal	1	LSB-1003
2	Snap Ring	1	LSB-1001
3	Inside Shaft Seal	1	LSB-1005
4	Press Plug	1	LSA-1022
5*	Front Cover (SAE "C" 2-Bolt)	1	
	Clockwise Rotation		LSB-1007-LR
	Counterclockwise Rotation		LSB-1007-LL
	Front Cover (SAE "C" 4-Bolt)	1	
	Clockwise Rotation		LSB-1007-DR
	Counterclockwise Rotation		LSB-1007-DL
	Front Cover (SAE "B" 4-Bolt)	1	
	Clockwise Rotation		LSB-1007-BR
	Counterclockwise Rotation		LSB-1007-BL
6	Body Seal (Top)	2	LSB-1012T
7	Balance Seal (Rubber)	2	LSB-1008
8	Backup Seal (Plastic)	2	LSB-1009
9	Wearplate (Top)	1	LSB-1014T
10	Body	1	
	25 GPM		LSB-1025-25
	27 GPM		LSB-1025-27
	30 GPM		LSB-1025-30
	34 GPM		LSB-1025-34
	38 GPM		LSB-1025-38
	43 GPM		LSB-1025-43
11	Driven Gear	1	
	25 GPM		LSB-1023-25
	27 GPM		LSB-1023-27
	30 GPM		LSB-1023-30
	34 GPM		LSB-1023-34
	38 GPM		LSB-1023-38
	43 GPM		LSB-1023-43

Item	Description	Qty	Muncie Number
12	Drive Gear	1	
	1-1/4 Rd. - 25 GPM		LSB-1016K7-25
	1-1/4 Rd. - 27 GPM		LSB-1016K7-27
	1-1/4 Rd. - 30 GPM		LSB-1016K7-30
	1-1/4 Rd. - 34 GPM		LSB-1016K7-34
	1-1/4 Rd. - 38 GPM		LSB-1016K7-38
	1-1/4 Rd. - 43 GPM		LSB-1016K7-43
	1-1/4 Spline 14T - 25 GPM		LSB-1016S5-25
	1-1/4 Spline 14T - 27 GPM		LSB-1016S5-27
	1-1/4 Spline 14T - 30 GPM		LSB-1016S5-30
	1-1/4 Spline 14T - 34 GPM		LSB-1016S5-34
	1-1/4 Spline 14T - 38 GPM		LSB-1016S5-38
	1-1/4 Spline 14T - 43 GPM		LSB-1016S5-43
13	Key	1	LSB-1017
14*	Rear Cover	1	LSB-1026
15	Nut (Assembly)	8	LSB-1020
16	Lockwasher (Assembly)	8	LSB-1029
17	Stud (Assembly)	8	
	25 GPM		LSB-1028-25S
	27 GPM		LSB-1028-27S
	30 GPM		LSB-1028-30S
	34 GPM		LSB-1028-34S
	38 GPM		LSB-1028-38S
	43 GPM		LSB-1028-43S
18	Relief Cartridge	1	LSA-1231V**
	Relief Cartridge Blanking Plug		LSA-1231VX
19	Load Sense Cartridge	1	LSB-1235V
20	Load Sense Cap	1	LSA-1027
21	Load Sense Cap O-Ring	1	LSA-1006
22	Load Sense Bypass Spring	1	
	15 Lb. (Standard)		LSA-1034
	45 Lb.		LSA-1034H
23	Wearplate (Bottom)	1	LSB-1014
24	Body Seal (Bottom)	2	LSB-1012
N.S.	Dowell (Gear Housing)	2	LSB-1024-38

\* Includes bushings pressed into the housing.

\*\* Replacement relief cartridge has a longer adjustment stem protruding out of the housing than the original.

**Seal kit:** GSK-LSB  
**Rebuild kit:** RBK-LSB

**Miscellaneous:**

**Stud torque:** 30 ft.lb.

**Nut torque:** 150 ft.lb.

All castings are notched and must be aligned to assure proper alignment.