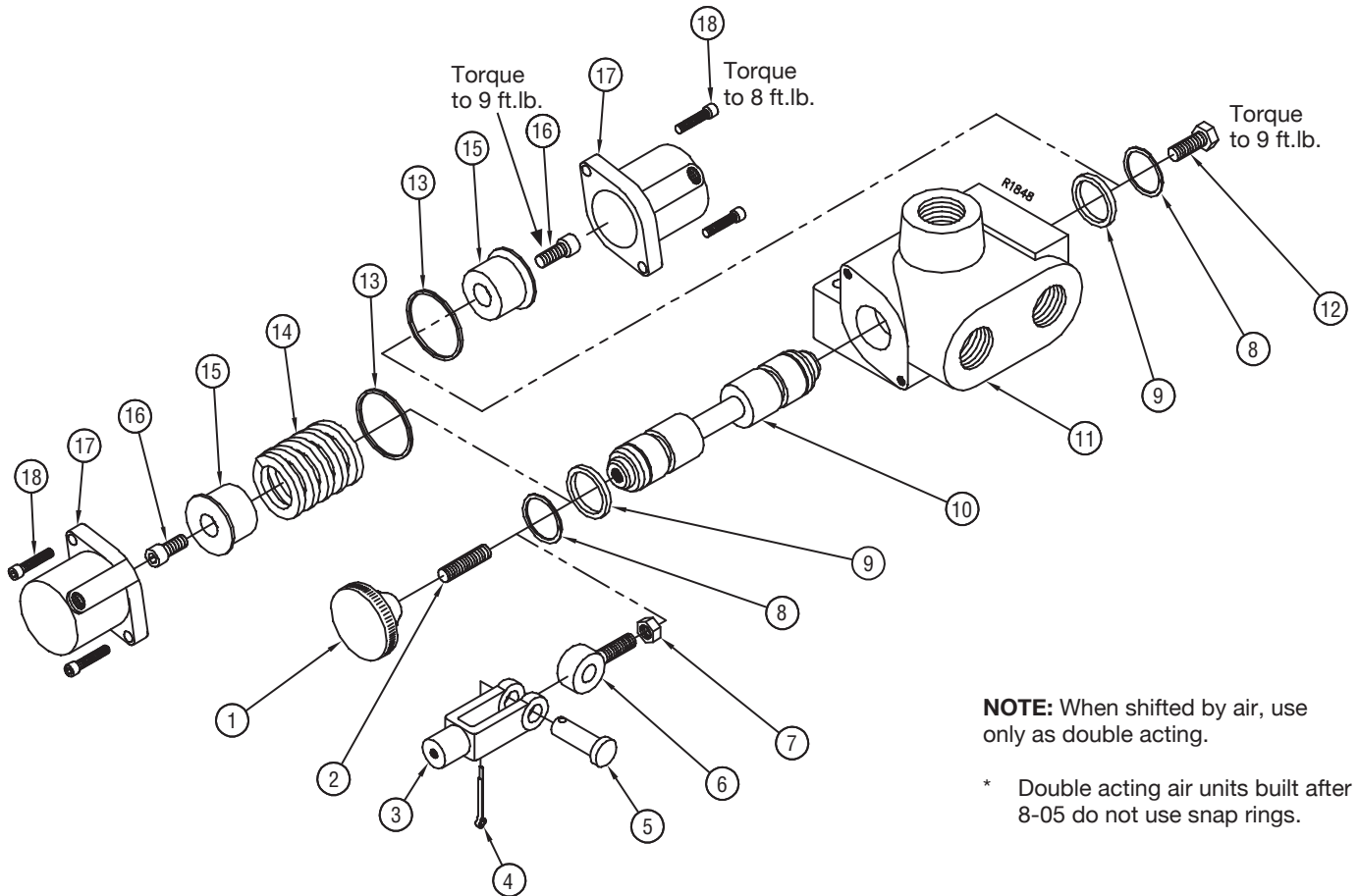




MUNCIE SELECTOR VALVE

SERVICE PARTS LIST



NOTE: When shifted by air, use only as double acting.

* Double acting air units built after 8-05 do not use snap rings.

ITEM	QTY	PART NUMBER	DESCRIPTION
1	1	28MK0155	Knob
2	1	20T35651	Stud
3	1	B27086A14	Cable Clevis (85 Series)
	1	B27086A56	Cable Clevis (165 Series)
4	1	1412C	Cotter Pin
5	1	B2708-1/2-6A	Pivot Pin
6	1	28T21135	Eye Bolt
7	1	22MJ3824	Jam Nut
8	2	24T35630 *	Spherical Snap Ring (Not used on Air Shift)
9	2	12T36870	O-Ring, Spool
10	1	NA	Valve Spool
11	1	NA	Valve Body
12	1	19T35708	Hex Head Cap Screw
13	2	12T35629	O-Ring, Air Cup Seal

ITEM	QTY	PART NUMBER	DESCRIPTION
14	1	27T35628	Spring (1.125 Dia) <i>Obsolete</i>
		27T37635	Spring (1.146 Dia)
15	2	28T37634 *	Spring Retainer (1.066 Long)
16	2	19T35633 *	Socket Head Cap Screw
17	2	28T35627	Air Cup
18	4	19T35595	Socket Head Cap Screw

NOTE:

- Items 13 thru 18 are included in Kit No. MSV-DAK.
- See RVC-HK-45 for Sealed Cable Hook-Up Kit Service Parts.
- Manual Air Activation Kit Part No. 48T38051.
- Items 3 thru 5 are included in Kit Numbers 165CLK-500 or 85CLK-500.