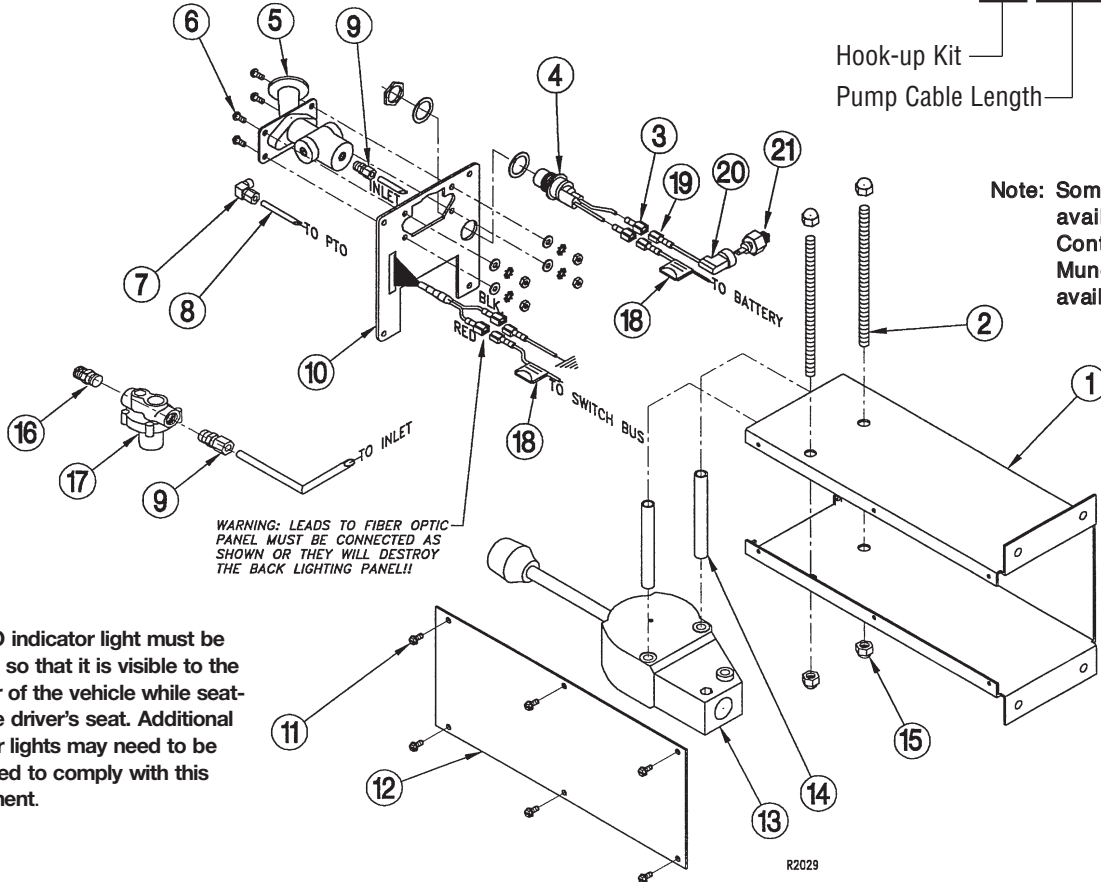




# DUMP PUMP CONSOLE WITH AIR SHIFT PTO INSTALLATION INSTRUCTIONS AND SERVICE PARTS LIST

PART NUMBER: DPC-1-A-XX-XXX



Note: Some items are no longer available for service. Contact your nearest Muncie representative for availability.

WARNING: LEADS TO FIBER OPTIC PANEL MUST BE CONNECTED AS SHOWN OR THEY WILL DESTROY THE BACK LIGHTING PANEL!!

The PTO indicator light must be installed so that it is visible to the operator of the vehicle while seated in the driver's seat. Additional indicator lights may need to be purchased to comply with this requirement.

## PARTS LIST AND DESCRIPTION

ITEM	QTY	PART NUMBER	DESCRIPTION
1	1	57T36653	Console Base
2	2	20M35844-7	Threaded Rod
3	2	PM-513A	Male Spade Connector
4*	1	32M12001	Indicator Light (12V)
5*	1	35M18653	PTO Air Shifter
6*	1	36MK1007	Shifter Bolt Kit
7*	2	44MB6942	90 Degree Tube Fitting
8*	1	45M44430	Air Tubing (30 ft)
9*	1	44MB6842	Tube Fitting
10	1	36T36656-AS	Console Face Plate
11	10	19T36355	Screw
12**	1	57T36654	Console Side Plate
13	1	RVC-SCL-2	Cable Shifter

ITEM	QTY	PART NUMBER	DESCRIPTION
14	2	23M37337	Shifter Spacer
15	4	22M35847	Acorn Nut
16*	1	44MB2164	Pipe Nipple
17*	1	31M15759	Pressure Valve
18*	2	33T36299	Fuse Assembly
19*	4	PM-514A	Female Spade Connector
20*	1	34MA1367	Booted Connector
21*	1	30M13003	PTO Indicator Switch (1&4)
		30M13004	PTO Indicator Switch (2&3)

**NOTES:**  
 \* These items are not included in this package (except for 1 Fuse Assy. Item 18). They are included with the Air Shift PTO.  
 \*\* Item 12 should be assembled facing the dashboard.

N.S.	RVC85-2-096	Cable – 96 inches (PTO, Pump, MSV, 90/91 Front or Rear Entry)
N.S.	RVC85-2-120	Cable – 120 inches (PTO, Pump, MSV, 90/91 Front or Rear Entry)
N.S.	RVC-HK-38	Hookup Kit (E Series Dump Pump)
N.S.	RVC-HK-45	Hookup Kit (Selector Valve)
N.S.	RVC-HK-36	Hookup Kit (90/91 Front Entry)
N.S.	RVC-HK-29	Hookup Kit (90/91 Rear Entry)
N.S.	RVC-HK-41	Hookup Kit (S Series Double Acting)
N.S.	RVC-HK-106	Hookup Kit (S Series Single Acting)

**ASSEMBLY INSTRUCTIONS ARE ON REVERSE SIDE**

---

## AIR SHIFT PTO INSTALLATION INSTRUCTIONS

- 1) Start installation by attaching and adjusting the control cable (item N.S.) to the cable shifter (item 13). For more information on doing this, see the corresponding RVC hook up kit installation instructions.
- 2) Orient console base (item 1) with the console's opening toward you. Place the cable shifter (item 13) inside the console base (item 1) toward the left. Insert the threaded rod (item 2) into the holes in the side of the console base (item 1) into the cable shifter (item 13). Position the shifter spacer (item 14) in line with the mounting holes in the cable shifter (item 13) and the holes in the side of the console base (item 1). Slide the threaded rod (item 2) through so an equal amount is showing on both sides. Thread on acorn nuts (item 15), but do not tighten yet.
- 3) Now we begin the plumbing assembly. Bring in the air tubing (item 8) through the bottom of the console base (item 1) and through the bottom of the face plate (item 10) [*run the supply line and the PTO line between the shifter spacers*]. Tighten the 90 degree tube fitting (item 7) into the side of the air shifter (item 5) and tighten the straight tube fitting (item 9) into the bottom of the air shifter (item 5). Install the supply line to the straight tube fitting (item 9) on the bottom of the air shifter (item 5) and the PTO line to the 90 degree tube fitting (item 7) on the side of the air shifter (item 5). When the air tubing (item 8) is attached, place the air shifter (item 5) through the top of the face plate (item 10) and fasten down as shown in the assembly drawing. Next, crimp on the 2 male spade connectors (item 3) to the 2 leads from the indicator light (item 4). Insert the indicator light (item 4) through the bottom of the face plate (item 10) and fasten tightly with a lock washer on each side as shown.
- 4) Align the mounting holes in the face plate (item 10) with the mounting holes in the top of the console base (item 1). The face plate (item 10) will only go on one way (fiber optic panel wires hanging closest to the opening). When aligned start the self threading screws (item 11) into the top of the console base (item 1). **Do not** tighten the face plate mounting screws (item 11) until all fasteners on the console have been tightened [*these (item 11) will be the last to be tightened*]. When the face plate (item 10) is located, align the cable shifter (item 13) as close as possible to the middle of the cut-out in the face plate (item 10) and tighten acorn nuts (item 15).
- 5) Now for the electrical assembly. Start by crimping on the four female spade connectors (item 19) to the wires leading up to the optical panel and to the indicator light (item 4). When attached, connect the indicator leads to the indicator light (item 4) and the back lighting leads to the optical panel.
- 6) Fasten the console side plate (item 12) to the console base (item 1) with the six mounting screws (item 11). Tighten firmly. Now, go back and tighten the four face plate mounting screws (item 11).



SP96-04 (Rev. 7-08) Printed in the U.S.A.  
© Muncie Power Products, Inc. 2008

**Muncie Power Products, Inc.** Member of the Interpump Hydraulics Group  
General Offices and Distribution Center • P.O. Box 548 • Muncie, IN 47308-0548  
(765) 284-7721 • FAX (765) 284-6991 • E-mail [info@munciepower.com](mailto:info@munciepower.com)  
Web site <http://www.munciepower.com>

Drive Products, Exclusive Agents for Canada, ISO Certified by an Accredited Registrar

