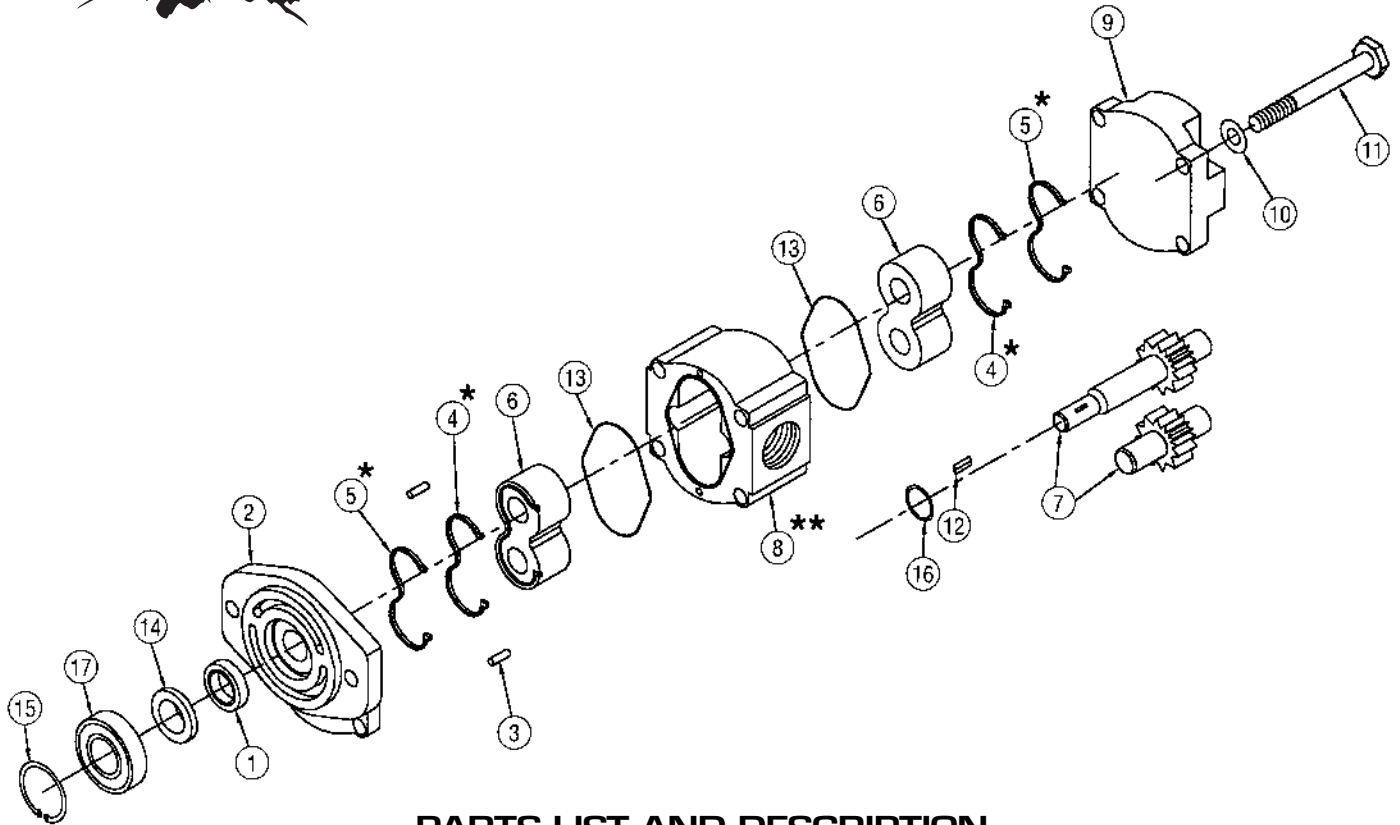




F1 & F2 SERIES PUMP SERVICE PARTS LIST



PARTS LIST AND DESCRIPTION

ITEM	DESCRIPTION	QTY	MUNCIE NUMBER
1	Shaft Seal	1	PF1-1005
2	Front Cover (SAE A) (SAE A) Special F2 Clutch Pump	1	PF1-1007 PF1-1007-A PF1-1007-C
3	Dowel Pin	2	PF1-1024
4	Channel Seal	2	PF1-1008
5	Backup Seal	2	PF1-1009
6	Thrust Block/Bushing	2	PF1-1013
7	Gear Set (5/8 9-T)	1	PF1-1016S-107-2 PF1-1016S-160-2 PF1-1016S-212-2 PF1-1016S-264-2 PF1-1016S-290-2 PF1-1016S-368-2 PF1-1016S-424-2 PF1-1016S-502-2 PF1-1016S-606-2 PF1-1016S-714-2 PF1-1016S-818-2 PF1-1016S-870-2

* Seals Go on Pressure Side
** Larger Opening goes Towards Rear Cover

ITEM	DESCRIPTION	QTY	MUNCIE NUMBER
7	Gear Set (5/8 Round)	1	PF1-1016K-107-2 PF1-1016K-160-2 PF1-1016K-212-2 PF1-1016K-264-2 PF1-1016K-290-2 PF1-1016K-368-2 PF1-1016K-424-2 PF1-1016K-502-2 PF1-1016K-606-2 PF1-1016K-714-2 PF1-1016K-818-2 PF1-1016K-870-2
7	Gear Set (3/4 11-T)	1	PF1-1016S16-107-2 PF1-1016S16-160-2 PF1-1016S16-212-2 PF1-1016S16-264-2 PF1-1016S16-290-2 PF1-1016S16-368-2 PF1-1016S16-424-2 PF1-1016S16-502-2 PF1-1016S16-606-2 PF1-1016S16-714-2 PF1-1016S16-818-2 PF1-1016S16-870-2

PARTS LIST AND DESCRIPTION

ITEM	DESCRIPTION	QTY	MUNCIE NUMBER
7	Gear Set (Clutch Pump)	1	
	1.60 GPM		PF1-1016C-160-2
	2.12 GPM		PF1-1016C-212-2
	2.64 GPM		PF1-1016C-264-2
	2.90 GPM		PF1-1016C-290-2
	3.68 GPM		PF1-1016C-368-2
	4.24 GPM		PF1-1016C-424-2
	5.02 GPM		PF1-1016C-502-2
	6.06 GPM		PF1-1016C-606-2
	7.14 GPM		PF1-1016C-714-2
8	Pump Housing	1	
	Ported (O.D.T. -12, -10)		
	1.07 GPM		PF1-1025-107S
	1.60 GPM		PF1-1025-160S
	2.12 GPM		PF1-1025-212S
	2.64 GPM		PF1-1025-264S
	2.90 GPM		PF1-1025-290S
	3.68 GPM		PF1-1025-368S
	4.24 GPM		PF1-1025-424S
	5.02 GPM		PF1-1025-502S
8	Pump Housing(PF2 Only)	1	
	Ported (O.D.T. -16, -10)		
	1.07 GPM		PF1-1025-107S2
	1.60 GPM		PF1-1025-160S2
	2.12 GPM		PF1-1025-212S2
	2.64 GPM		PF1-1025-264S2
	2.90 GPM		PF1-1025-290S2
	3.68 GPM		PF1-1025-368S2
	4.24 GPM		PF1-1025-424S2
	5.02 GPM		PF1-1025-502S2
8	Pump Housing - No Ports	1	
	1.07 GPM		PF1-1025-107
	1.60 GPM		PF1-1025-160
	2.12 GPM		PF1-1025-212
	2.64 GPM		PF1-1025-264
	2.90 GPM		PF1-1025-290
	3.68 GPM		PF1-1025-368
	4.24 GPM		PF1-1025-424
	5.02 GPM		PF1-1025-502
	6.06 GPM		PF1-1025-606

ITEM	DESCRIPTION	QTY	MUNCIE NUMBER
9	Rear cover	1	
	(O.D.T. Ports 12 & 10)		PF1-1026S
	(No Ports - .71 Thk.)		PF1-1026A
	(No Ports - 1.18 Thk. PF1)		PF1-1026
	(No Ports - .71 Milled PF2)		PF1-1026B
10	Washer	4	PF1-1029
11*	Assembly Bolt	4	
	1.07 GPM		PF1-1028-652
	1.60 GPM		PF1-1028-212
	2.12 GPM		PF1-1028-212
	2.64 GPM		PF1-1028-264
	2.90 GPM		PF1-1028-264
	3.68 GPM		PF1-1028-368
	4.24 GPM		PF1-1028-424
	5.02 GPM		PF1-1028-502
	6.06 GPM		PF1-1028-606
12	Key	1	PF1-1017
	Housing Seal		PF1-1012
	Seal Retainer		PF1-1003
	Snap Ring (Retainer)		PF1-1004
	Snap Ring (Shaft)		PF1-1035
	Out Board Bearing (Clutch Pump)		PF1-1002
	Mounting Bolt (Clutch Pump)		19M31100
	Mounting Bolt Washer (Clutch Pump)		21MZ3487
	-16 O.D.T. Plug		HHBP-16
	-12 O.D.T. Plug		HHBP-12
13	-10 O.D.T. Plug	1	HHBP-10
* Torque to 31 ft. lbs.			
** Torque to 15 ft. lbs.			
*** Used on Clutch Pump Only			
Seal Kit		GSKPF1	
Rebuild Kit		Not Available	



SP98-02 (Rev. 1-07) Printed in the U.S.A.
© Muncie Power Products, Inc. 2007

Muncie Power Products, Inc. Member of the Interpump Hydraulics Group
General Offices and Distribution Center • P.O. Box 548 • Muncie, IN 47308-0548
(765) 284-7721 • FAX (765) 284-6991 • E-mail info@munciepower.com
Web site <http://www.munciepower.com>

Drive Products, Exclusive Agents for Canada, ISO Certified by an Accredited Registrar

