

# PH SERIES

## GEAR PUMPS



### DESIGNED FOR VERSATILITY

The PH Series is an all cast iron gear pump designed for low to medium flow systems. Its small package size makes it ideal for direct mounting to power take-offs with SAE shaft and flanges. Both side and rear ports are standard.



### KEY FEATURES

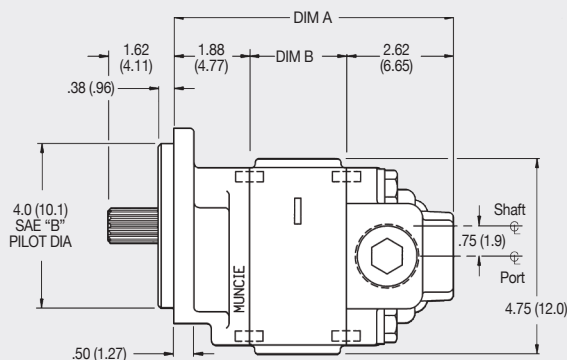
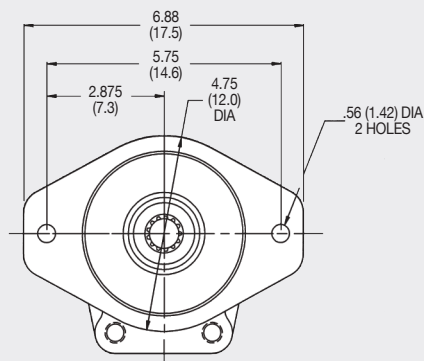
- 6 standard sizes
- Pressures to 3,500 PSI (240 Bar)
- Speeds to 3,500 RPM
- All cast iron construction
- NPT or SAE O-Ring ports
- Full one year warranty
- Solid one piece shaft
- Pressure balanced wear plates
- Dowel pin construction
- Long life sleeve type bushings

### PUMP SPECIFICATIONS

MODEL NUMBER	DISPLACEMENT IN3 (CC)	MAX.* RPM	MIN.* RPM	MAX. PRES PSI (BAR)	INLET PORT SIDE & REAR (NPT)	INLET PORT SIDE & REAR (ODT)	PRES. PORT SIDE & REAR (NPT)	PRES. PORT SIDE & REAR (ODT)	WEIGHT LBS. (KG)
PH1-03	0.62 (10.2)	3,500	1,000	3,500 (241)	1 1/4"	1 1/4"	3/4"	3/4"	18 (8.3)
PH1-05	1.24 (20.3)	3,500	800	3,500 (241)	1 1/4"	1 1/4"	3/4"	3/4"	20 (9.0)
PH1-07	1.55 (25.4)	3,250	800	3,500 (241)	1 1/4"	1 1/4"	3/4"	3/4"	21 (9.3)
PH1-08	1.86 (30.5)	3,000	800	3,250 (224)	1 1/4"	1 1/4"	3/4"	3/4"	22 (10.1)
PH1-09	2.17 (35.6)	3,000	800	2,900 (200)	1 1/4"	1 1/4"	3/4"	3/4"	24 (10.7)
PH1-11	2.48 (40.6)	3,000	800	2,500 (172)	1 1/4"	1 1/4"	3/4"	3/4"	25 (11.3)

Max Inlet Vacuum - 5 in.hg. (.17 BAR). The PH Series cannot be used as a motor.

## DIRECT MOUNT DIMENSIONS



MODEL	DIM. A IN. (MM)	DIM. B IN. (MM)
PH1-03	4.77 (121.2)	0.90 (22.9)
PH1-05	5.24 (133.9)	1.40 (35.6)
PH1-07	5.52 (140.2)	1.65 (41.9)

MODEL	DIM. A IN. (MM)	DIM. B IN. (MM)
PH1-08	5.77 (146.5)	1.90 (48.2)
PH1-09	6.02 (152.9)	2.15 (54.6)
PH1-11	6.27 (159.3)	2.40 (61.0)

**Note:** SAE "B" pilot shown. SAE "A" pilot diameter is 3.25 (82.5), .44 diameter holes on 4.19 bolt circle.

## MODEL NUMBER CONSTRUCTION

**PH 1-07 02-B P B L-M**

**Series**—PH

**Design**—1

**GPM (LPM) @ 1,000 RPM (Ref)**

03 (10), 05 (20), 07 (25),  
08 (30), 09 (26), 11 (41)

**Shaft Size & Type**

02 — SAE "B" 7/8" -13T Spline

**Mounting Flange Type**

A — SAE "A" 2-Bolt

B — SAE "B" 2-Bolt

**Modified**

M — Ford Applications

S — Extended Studs

Omitted — Standard Pump Option

**Rotation**

L — Left Hand (CCW)

R — Right Hand (CW)

**Port Location**

B — Both Side and Rear Ports

R — Rear Ports

(Modified Units Only)

**Port Type**

P — Pipe Thread

S — Straight Thread (ODT)

**Note:** Tandem versions available upon special request.

## OIL RECOMMENDATIONS

Muncie Power does not promote specific manufacturers' brands of oil. Recommendations below are guidelines; consult oil manufacturer for exact application needs.

**Viscosity Range:**

Viscosity Minimum: 50-60 SUS (7.5-10.5 cST)

Viscosity Optimum Continuous: 60-100 SUS (10.5-21.6 cST)

Viscosity Maximum @ Startup: 7,500 SUS (1,600 cST)

Viscosity Index: 90 Minimum

Aniline Point: 175 Minimum

Pour Point: 15° F (-10° C) Maximum

Foam Resistance: Recommended

Rust Resistance Inhibitors: Recommended

Corrosion Resistance: Recommended

Oxidation Stability: Recommended

Anti-Wear Additive: .06% Zinc Minimum\*

**Notes:** Cold weather operation requires special oil considerations. Viscosity should not exceed 7,500 SUS (1,600 cST) at lowest startup temperature. Continuous operation should range between 60-1,000 SUS (10.5-21.6 cST) for all temperature ranges. Never use diesel fuel or kerosene to thin oil.

\* Anti-Wear Additives may be recommended by some motor manufacturers. However, they are optional and typically not required for gear pump or gear motors.



**Muncie®  
Power  
Products**

A Member of the Interpump Group

MP15-17 (Rev. 12-24)

201 East Jackson Street, Muncie, Indiana 47305  
800-367-7867 • Fax: 765-284-6991 • info@munciepower.com

Specifications are subject to change without notice. Visit [www.munciepower.com](http://www.munciepower.com) for warranties and literature. All rights reserved. © Muncie Power Products, Inc. (2015)