

82 SERIES

POWER TAKE-OFF

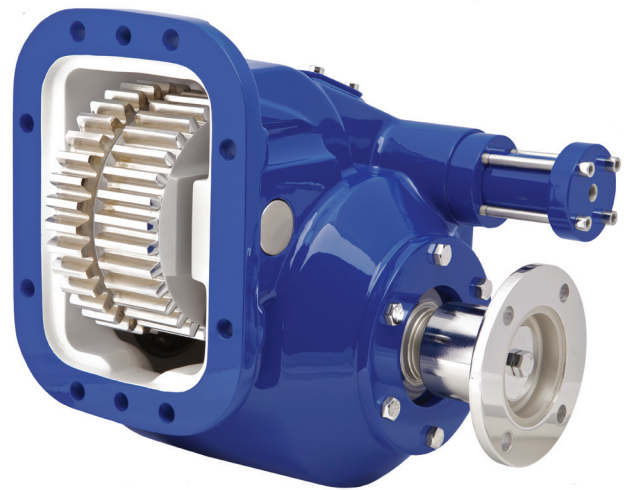


BUILT FOR HEAVY DUTY APPLICATIONS

Built for high torque and heavy duty requirements, the 82 Series power take-off features a lever or an air shift cast iron housing, and a single or dual optional hydraulic pump mount.

TARGET MARKETS

- Dump
- Tow and Recovery



KEY FEATURES

- Power to drive high volume pumps, high CFM blowers with up to 500 lb.ft. torque capacity and 95 H.P. @ 1,000 RPM:
- Double acting air shift provides positive engagement and disengagement
- Two versatile companion flange output types for remote pump and mechanical drives
- Six SAE direct mount pump options “B”, “BB”, “C”, and DIN 5462 mounts
- Rotatable direct mount flanges allows pump to be positioned for maximum clearance

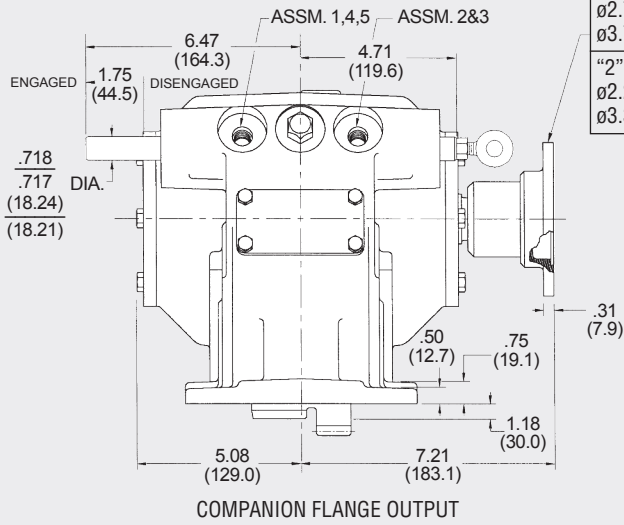
PTO TORQUE & HORSEPOWER RATINGS

SPEED RATIO	INTERMITTENT HP @ 1,000 RPM	INTERMITTENT TORQUE LBS.FT.	CONTINUOUS TORQUE LBS.FT.	INTERMITTENT [KW] @ 1,000 RPM	INTERMITTENT TORQUE [NM]	CONTINUOUS TORQUE [NM]
05	95	500	350	[71]	[678]	[475]
06	85	450	315	[63]	[610]	[427]
08	85	450	315	[63]	[610]	[427]
09	78	410	287	[58]	[556]	[389]
10	78	410	287	[58]	[556]	[389]
12	71	375	263	[53]	[508]	[356]
13	71	375	263	[53]	[508]	[356]
15	67	350	245	[50]	[475]	[332]
19	57	300	210	[43]	[407]	[285]

Approximate Weight: 85 lbs. (38.6 Kg.)

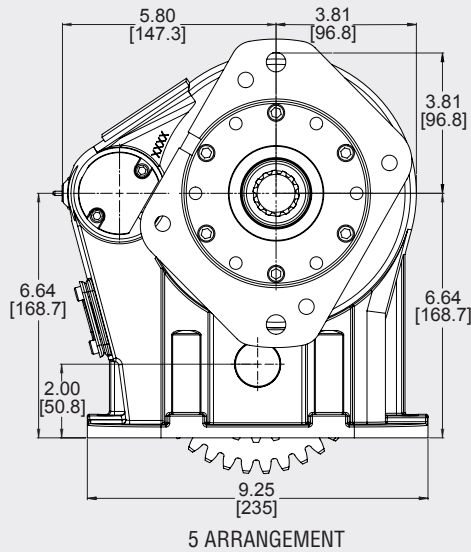
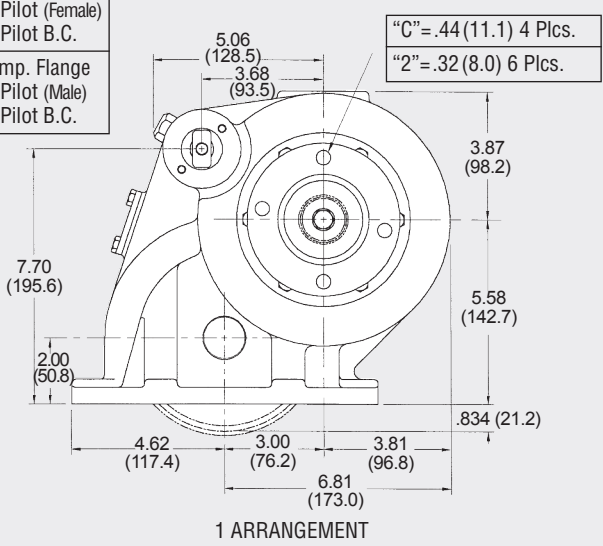
DIMENSIONS

POSITIVE SHIFT INDICATOR LIGHT SWITCH LOCATION

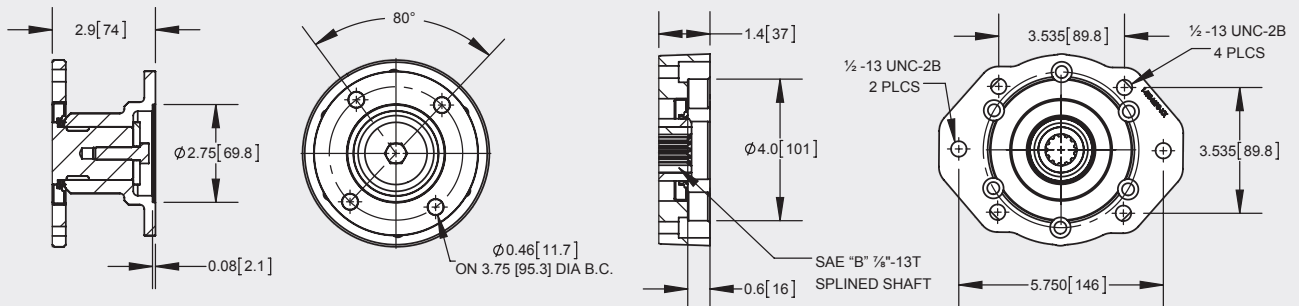


"C"=1410 Series
 ø2.75(70.0)Pilot (Female)
 ø3.75(95.1)Pilot B.C.

"2"=DIN Comp. Flange
 ø2.24(57.0)Pilot (Male)
 ø3.31(84.0)Pilot B.C.



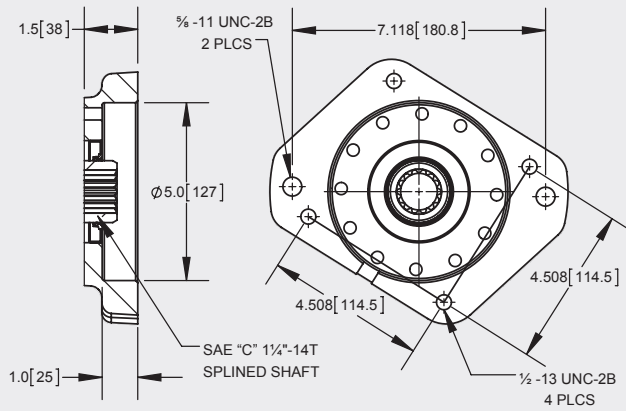
OUTPUT OPTIONS



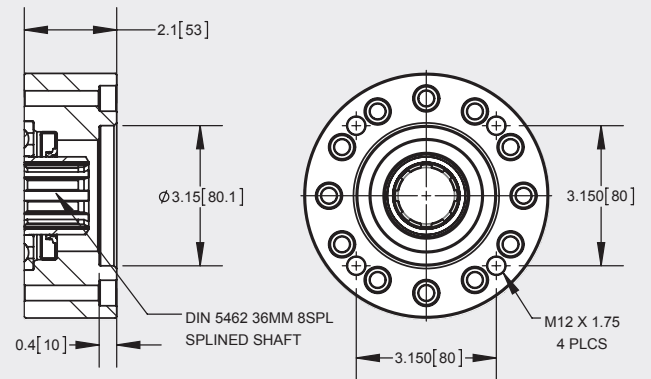
"C" OUTPUT - 1410 COMPANION FLANGE

"D" OUTPUT - SAE "B" 2/4-BOLT

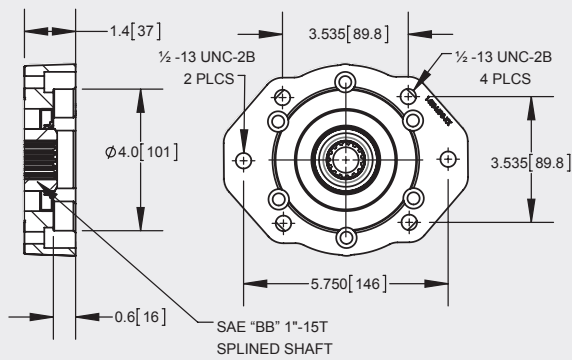
OUTPUT OPTIONS



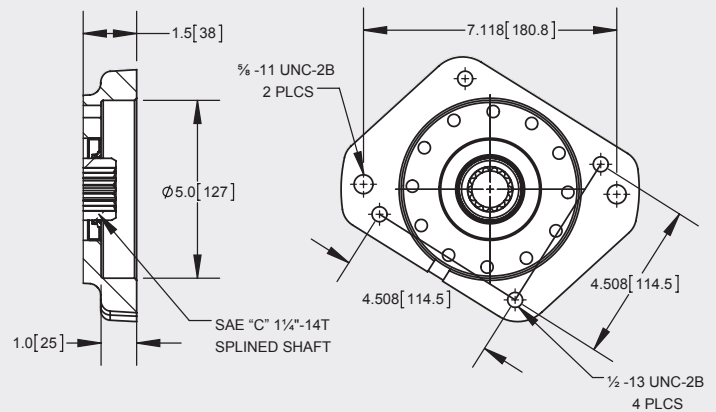
"E" OUTPUT - SAE "C" 2/4-BOLT



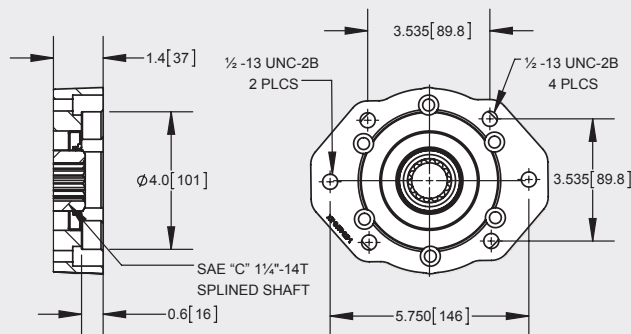
"I" OUTPUT - DIN 5462



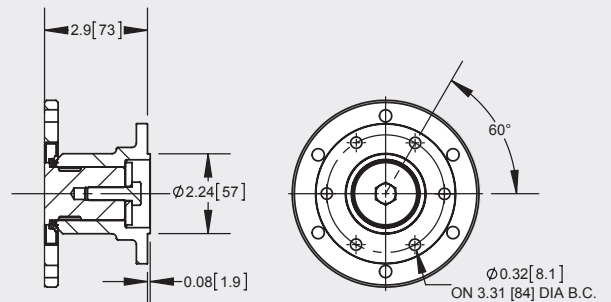
"P" OUTPUT - SAE "B" 2/4-BOLT FLANGE
SAE "BB" 1"-15T SHAFT



"U" OUTPUT - SAE "C" 2/4-BOLT FLANGE
DUAL OUTPUT (Constant Mesh "M" Only)



"Z" OUTPUT - SAE "B" 2/4-BOLT FLANGE
SAE "C" 1/4"-14T SHAFT



"2" OUTPUT - DIN100 COMPANION FLANGE

MODEL NUMBER CONSTRUCTION

82 8S-U68-05 L-1-C-X

PTO Type

82 — 8-Bolt 82 Series

Mountings

8S — SAE 8-Bolt Std. Mtg.
 8B — SAE 8-Bolt Std. Mtg. — Metric Studs
 8L — SAE 8-Bolt Std. Mtg. — Less Stud Kit
 8F — SAE 8-Bolt Non-Std. — Eaton Endurant (E70 & E80)
 8R — SAE 8-Bolt Std. Mtg. — Special Roller Bearing

Transmission Input Gear Options

E70 — Eaton 7.055P 20° PA Spur
 E80 — Eaton 8.048P 20° PA 28.98 RH
 F11 — Fuller 10.1P 21.5° PA Spur
 F68 — Fuller 6 or 6/8P 20° Spur
 M65 — Mack 6.48P 17° 30' Spur
 S70 — Tremec/Spicer 7P 17.5° 28° 4' 23" LH
 U57 — Universal 5 or 5/7P 20° Spur
 U62 — Universal 6P 25° PA Spur
 U68 — Universal 6 or 6/8P 20° PA Spur

Speed Ratios

05 — .47:1
 06 — .60:1
 08 — .75:1
 09 — .93:1
 10 — 1.00:1
 12 — 1.15:1
 13 — 1.33:1
 15 — 1.50:1
 19 — 1.89:1

Special Features

X — None
 G — Greaseable Output Shaft (EG, PG, ZG Only)
 P — Pressure Lubrication
 8 — Greasable Shaft Plus Pressure Lube

Output Types

C — 1410 Companion Flange
 D — SAE "B" 7/8" -13T, SAE "B" 2- & 4-Bolt
 E — SAE "C" 1 1/4" -14T, SAE "C" 2- & 4-Bolt
 I — DIN 5462
 P — SAE "BB" 1" -15T, SAE "B" 2- & 4-Bolt
 U — SAE "C" Double Output Flanges*
 Z — SAE "C" 1 1/4" -14T, SAE "B" 2- & 4-Bolt
 2 — DIN 100 Companion Flange

Assembly Arrangements

1 — Right Side Shaft Low
 2 — Right Side Shaft Low, Gear to Rear
 3 — Left Side Shaft Low
 4 — Left Side Shaft Low, Gear To Rear
 5 — Tall Housing—Right Side Shaft Low
 6 — Tall Housing—Right Side Shaft Low, Gear to Rear
 7 — Tall Housing—Left Side Shaft Low
 8 — Tall Housing—Left Side Shaft Low, Gear to Rear

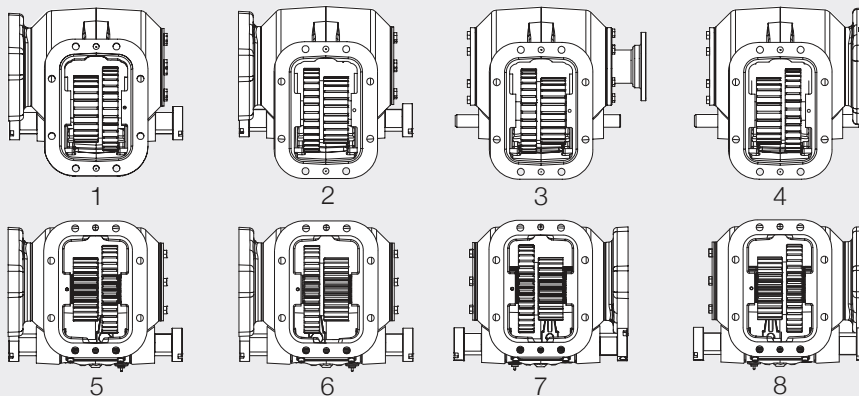
Shift Types

L — Lever
 M — Constant Mesh
 R — Double Acting Manual Air
 S — 12 V Double Acting Electric/Air
 T — Air Shift (Less Activation Kit)

Note:

* Limited availability, contact Muncie Power Products Customer Service.

ASSEMBLY ARRANGEMENTS



A Member of the Interpump Group

MP15-29 (Rev. 05-22)

201 East Jackson Street, Muncie, Indiana 47305
 800-367-7867 • Fax: 765-284-6991 • info@munciepower.com

Specifications are subject to change without notice. Visit www.munciepower.com for warranties and literature. All rights reserved. © Muncie Power Products, Inc. (2015)