

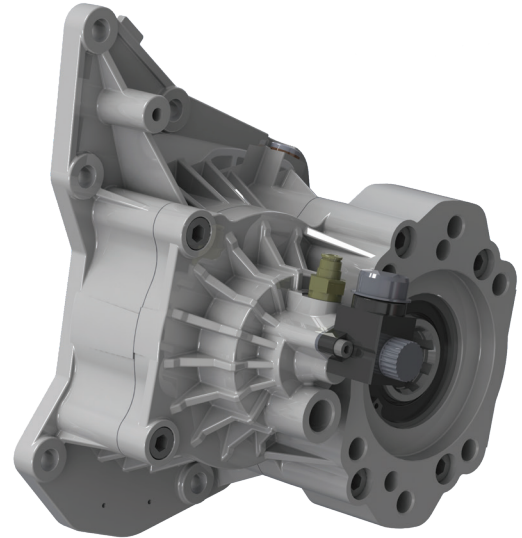
RS6S-P89M SERIES

DETROIT DT12 TRANSMISSIONS



STRUCTURAL SUPPORT WITH INTEGRAL HYDRAULIC MOUNT

Muncie Power's RS6S-P89M PTO is designed to fit Detroit DT12 transmissions in Freightliner or Western Star Class 8 Cascadia or 5700 trucks. The transmission requires the 362-822 Detroit power take-off prep kit option. For this unit, the main feature is the integral hydraulic mount for structural support of hydraulic pumps up to 60 lbs.* (27 Kg.) without additional transmission support. The RS6S-P89M is capable of different ratios, several different outputs and the ability to mount larger displacement pumps.



KEY FEATURES

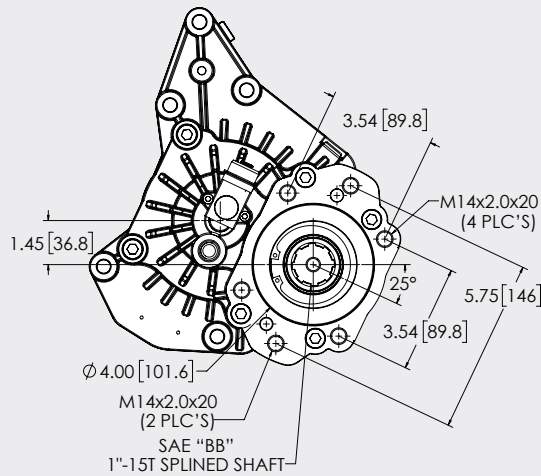
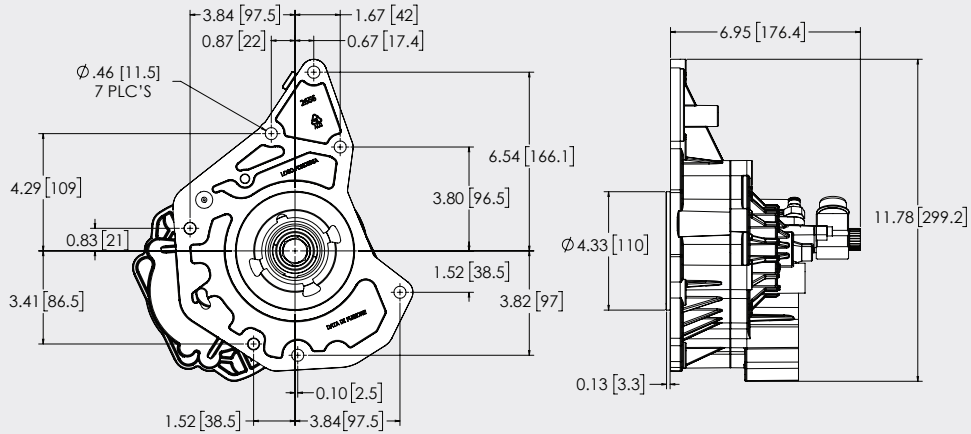
- Fits Detroit DT12 transmission
- Solenoid-activated, mechanical shift
- Available with direct mount or companion flange output options
- Takes advantage of full torque capacity of transmission
- Will allow for larger pumps without support*
*Bending moment limit of 29.5 ft.lb. max.

PTO TORQUE & HORSEPOWER RATINGS

MODEL	MAX. TORQUE	MAX. HORSEPOWER @ 1,000 RPM	OUTPUTS	INTERNAL RATIO
RS6S-P89M1-P1PX	317 lbs.ft. (430 Nm)	60 (45 kW)	SAE "BB" or 1410 Companion Flange	0.97
RS6S-P89M2-P1PX	317 lbs.ft. (430 Nm)	60 (45 kW)	SAE "BB" or 1410 Companion Flange	1.32
RS6S-P89M3-P1PX	295 lbs.ft. (400 Nm)	57 (43 kW)	SAE "BB" or 1410 Companion Flange	1.83

Approximate Weight: 23 lbs. (10.4 Kg.)

DIMENSIONS



MODEL NUMBER CONSTRUCTION

RS6S-P89-M1-P-1-P-X

Model

RS6S — Rear Mount 6-Bolt

Transmission Gear

P89 — PTO Base Model

Speed Ratios

M1 — 1:0.97 Internal Ratio
 M2 — 1:1.32 Internal Ratio
 M3 — 1:1.83 Internal Ratio

Shift Type

P — 12 V Electric/Air Shift
 — (Integral Solenoid)

Special Feature

X — None

Output Types

C — 1310 Companion Flange
 (Add-on Kit: 197KFL10300)
 D — 1410 Companion Flange
 (Add-on Kit: 197KFL10400)
 P — 1" -15T Spline, SAE "BB" 2- & 4-Bolt

Assembly Arrangement

1 — Standard Rear Mounting



A Member of the Interpump Group

MP17-02 (Rev. 04-24)

201 East Jackson Street, Muncie, Indiana 47305
 800-367-7867 • Fax: 765-284-6991 • info@munciepower.com

Specifications are subject to change without notice. Visit www.munciepower.com for warranties and literature. All rights reserved. © Muncie Power Products, Inc. (2017)