

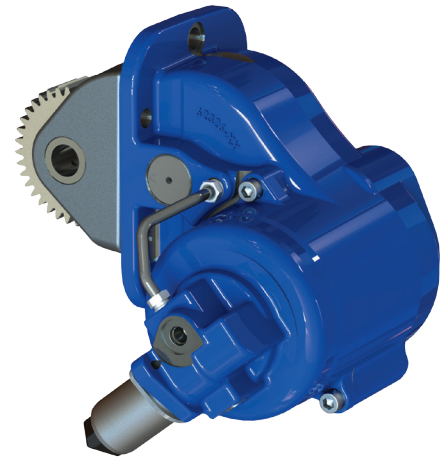
FR6Q SERIES

POWER TAKE-OFF



THE QUIET PTO SOLUTION FOR FORD

Muncie Power Products' quiet, FR6Q Series power take-off is designed to fit Ford Super Duty trucks, F-350 to F-550, with the Ford 6R140 transmission. Featuring the latest in noise reduction technology, the FR6Q encompasses a noise abatement mechanism that eliminates virtually all gear rattle noise for a quiet power take-off.



KEY FEATURES

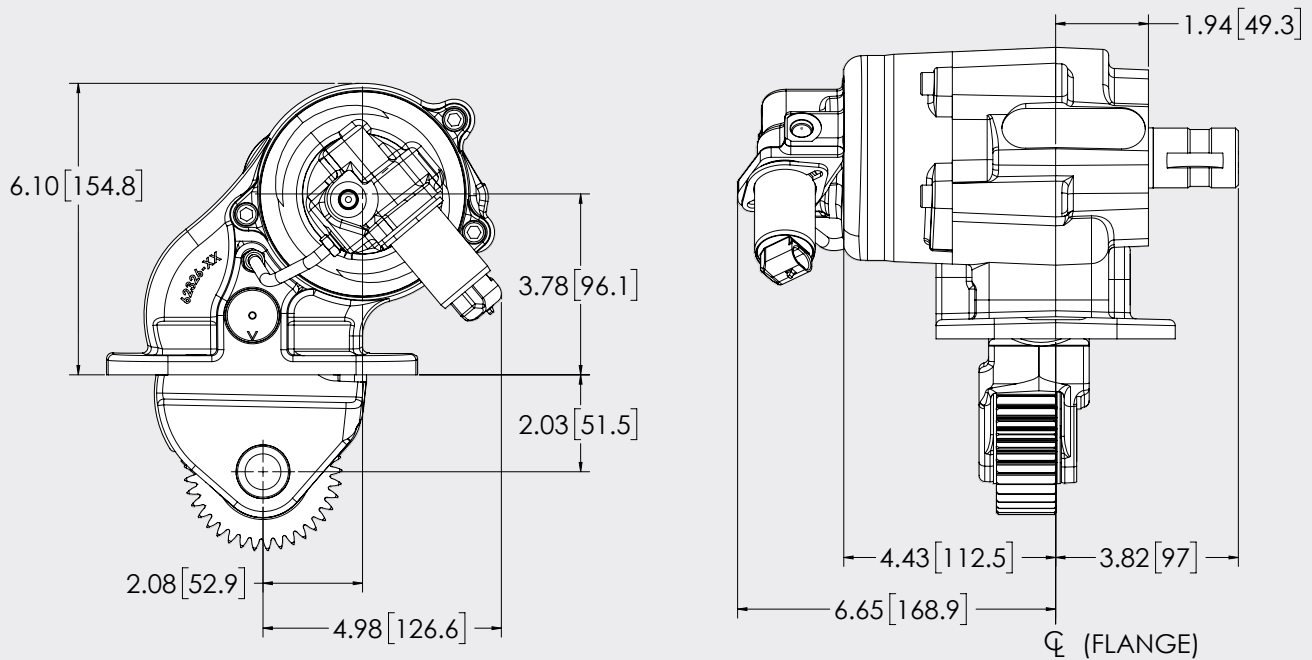
- Fits 4x2 and 4x4 Ford Super Duty trucks, F-350 to F-550, with the Ford 6R140 transmission (may also be used on F-650 and F-750 trucks)
- Noise abatement mechanism eliminates virtually all gear rattle noise for a quiet PTO
- Special feature for stationary and mobile now available in both gas and diesel
- Solenoid activated
- Preconfigured wiring harness
- One-piece installation with rocker

PTO TORQUE & HORSEPOWER RATINGS

SPEED RATIO	INTERMITTENT HP @ 1,000 RPM	INTERMITTENT TORQUE LBS.FT.	CONTINUOUS TORQUE LBS.FT.	INTERMITTENT (KW) @ 1,000 RPM	INTERMITTENT TORQUE (NM)	CONTINUOUS TORQUE (NM)	WEIGHT LBS. (KG.)
(09) Stationary	39	200	140	(29)	(271)	(190)	35 lbs. (15.9 Kg.)
(09) Mobile	22	*120	120	(16)	(162)	(162)	35 lbs. (15.9 Kg.)

*FR6Q limit in mobile applications continuous intermittent.

DIMENSIONS



MODEL NUMBER CONSTRUCTION

FR6Q-F12-09-D-3-Q-X

Model

FR6Q — Ford 6-Bolt Quiet

Transmission Gear

F12 — Ford 6R140

Ratio

09 — .90:1 Output Speed

Shift Type

- 6 — Elec./Hyd. 2016 & Later F-650 — F-750 Diesel Engine
2017 & Later F-250 — F-550 Diesel Engine
- F — Elec./Hyd. 2016 & Later F-650 — F-750 Gas Engine
2017 & Later F-250 — F-550 gas engine
- D — Elec./Hyd. 2016 & Earlier F-250 — F-550 Diesel Engine
- G — Elec./Hyd. 2015 & Earlier F-650 — F-750 Gas Engine

Special Features

- X — None
- B — Stationary and Mobile
(only available on 6, F and D shift types)

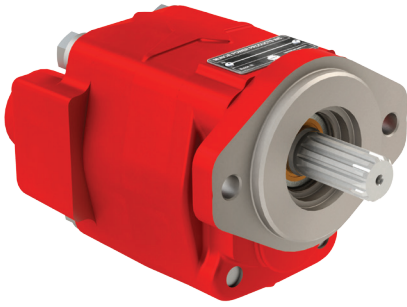
Output Type

- B — 1.25" Round Shaft with $\frac{5}{16}$ " Key
(4X2 only)
- N — $\frac{3}{4}$ " — 11T Spline Shaft
- Q — SAE "A" 2-Bolt with SAE "B" $\frac{7}{8}$ "-13T
Shaft (4X2 only)
- T — SAE "A" 2-Bolt $\frac{3}{4}$ "-11T Spline Shaft
(4X2 only)

Assembly Arrangement

- 3 — Left Side Shaft Low

** Driveline output is not recommended on 4x4 chassis.



H SERIES

Modifications to the H Series pump rear cover will allow optimum compatibility with FR6Q "Q" mount applications. Enhanced design features, including elimination of side ports and the removal of nearly 1/2" of material from the suction side of the housing, provide increased clearance of the floorboard.

All standard H Series displacements will be available for FR6Q "Q" mount applications. Each unit will come standard with a SAE "A" 2-bolt mounting flange and 7/8" - 13T splined shaft.

MODEL NUMBER	DISPLACEMENT IN ³ (CC)	MAX* RPM	MIN* RPM	MAX PRES PSI (BAR)	INLET (SAE)	OUTLET (SAE)	MAX INLET VACUUM
PH1-03-02ASRL-M	0.62 (10)	3,500	1000	3,500 (241)	1.25	0.75	5 in.hg.
PH1-05-02ASRL-M	1.24 (20)	3,500	800	3,500 (241)	1.25	0.75	5 in.hg.
PH1-07-02ASRL-M	1.55 (25)	3,250	800	3,500 (241)	1.25	0.75	5 in.hg.
PH1-08-02ASRL-M	1.86 (30)	3,000	800	3,250 (224)	1.25	0.75	5 in.hg.
PH1-09-02ASRL-M	2.17 (36)	3,000	800	2,900 (200)	1.25	0.75	5 in.hg.
PH1-11-02ASRL-M	2.48 (41)	3,000	800	2,500 (172)	1.25	0.75	5 in.hg.

Note: Use H Series pumps on 4x2 chassis applications only.



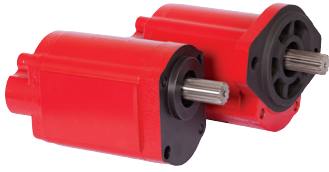
W SERIES

Modifications to the W Series pump housing allow compatibility with the FR6Q "Q" mount on the F-650/F-750 applications. The W Series robust design allows higher operating pressures than typical gear pump applications.

All standard "W" displacements are available for the FR6Q "Q" mount. Each unit will come standard with a SAE "A" 2-bolt mounting and a 7/8" 13T splined shaft.

MODEL NUMBER	DISPLACEMENT IN ³ (CC)	MAX* RPM	MIN* RPM	MAX PRES PSI (BAR)	PORTS (SAE) SIDE & REAR	PORTS (SF) SIDE ONLY	MAX INLET VACUUM
W06-02AJ0-GIGI-F14	1.45 (23.9)	3,600	800	4,350 (300)	- 16	1.50" X 1.00"	5 in.Hg.
W08-02AJ0-GIGI-F14	1.96 (32.2)	3,600	600	4,350 (300)	- 16	1.50" X 1.00"	5 in.Hg.
W11-02AJ0-GIGI-F14	2.42 (39.7)	3,250	600	4,350 (300)	- 16	1.50" X 1.00"	5 in.Hg.
W13-02AJ0-GTGT-F14	2.92 (47.9)	3,000	600	4,000 (275)	- 20	2.00" X 1.25"	5 in.Hg.
W15-02AJ0-GTGT-F14	3.46 (56.8)	2,750	600	3,750 (260)	- 20	2.00" X 1.25"	5 in.Hg.
W17-02AJ0-GTGT-F14	3.96 (65.0)	2,500	600	3,500 (240)	- 20	2.00" X 1.25"	5 in.Hg.
W19-02AJ0-GTGT-F14	4.37 (71.6)	2,500	600	3,250 (225)	- 20	2.00" x 1.25"	5 in.Hg.
W21-02AJ0-GTGT-F14	4.87 (79.8)	2,500	600	3,000 (210)	- 20	2.00" x 1.25"	5 in.Hg.

Note: Use W Series pumps on F-650, F-750 chassis only.



F4 SERIES

Ultimate power and performance in a small package best describes the all new F4 Series gear pumps. The pressure balanced bushing blocks and sleeve bearings provide both extra long life and high performance.

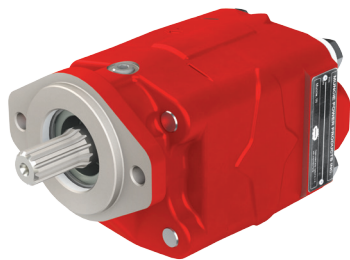
MODEL NUMBER	DISPLACEMENT IN ³ (CC)	MAX* RPM	MIN* RPM	MAX PRES PSI (BAR)	O.D.T.** INLET REAR	O.D.T.** INLET SIDE	MAX INLET VACUUM	DIRECT MOUNT PUMP USE PF4-***16QSRL	PUMP FLOW @ 1,200 ENG. (THEORETICAL)
PF4-107	0.24 0(4)	3,500	1,000	3,625 (250)	1 1/16	1 5/16	6 in.Hg.	—	—
PF4-160	0.37 0(6)	3,500	900	3,625 (250)	1 1/16	1 5/16	6 in.Hg.	—	2.4 GPM
PF4-212	0.49 0(8)	3,500	900	3,625 (250)	1 1/16	1 5/16	6 in.Hg.	—	3.2 GPM
PF4-264	0.61 (10)	3,500	800	3,625 (250)	1 1/16	1 5/16	6 in.Hg.	—	4.0 GPM
PF4-290	0.67 (11)	3,500	800	3,625 (250)	1 1/16	1 5/16	6 in.Hg.	—	4.4 GPM
PF4-368	0.85 (14)	3,500	600	3,625 (250)	1 1/16	1 5/16	6 in.Hg.	—	5.6 GPM Auto Loader*
PF4-424	0.98 (16)	3,500	600	3,625 (250)	1 1/16	1 5/16	6 in.Hg.	6.5 GPM	—
PF4-502	1.16 (19)	2,750	600	3,625 (250)	1 1/16	1 5/16	6 in.Hg.	7.7 GPM	—
PF4-606	1.40 (23)	2,350	600	3,400 (235)	1 1/16	1 5/16	6 in.Hg.	9.2 GPM	—
PF4-714	1.65 (27)	2,350	600	2,750 (190)	1 1/16	1 5/16	6 in.Hg.	10.9 GPM Small Wrecker*	—
PF4-818	1.89 (31)	2,000	600	2,400 (165)	1 1/16	1 5/16	6 in.Hg.	12.5 GPM	—
PF4-870	2.01 (33)	2,000	600	2,250 (155)	1 1/16	1 5/16	6 in.Hg.	13.3 GPM Roll-Off*	—

* Maximum RPM shown at 0 In.Hg. Vacuum for -16 side inlet port.

** Port thread size shown

Notes: For Ford TorqShift® 4x4 applications, order pump code PF4-*** -16QSRL. PF4-502 & larger pump sizes are not applicable on Ford TorqShift® gas 4x4 application. Maximum oil temperature is 200°F (93.5°C). Buna N seals are standard.

*Common Applications



K SERIES

The K Series standard gear housing will be replaced with the S Series gear housing for use on FR6Q “Q” mount applications. Elimination of side ports on the “S” gear housing significantly reduces overall width of the pump. This reduction provides increased clearance of the floorboard.

Only the 6, 13 and 17 GPM K Series models will be available for FR6Q “Q” mount applications due to the limited amount of S displacements. Each unit will come standard with a SAE “A” 2-bolt mounting flange and 7/8" - 13T splined shaft.

MODEL NUMBER	DISPLACEMENT IN ³ (CC)	MAX* RPM	MIN* RPM	MAX PRES PSI (BAR)	INLET (NPT)	OUTLET (SAE)	MAX INLET VACUUM
PK1-06-02ACRL-M	1.47 (24)	3,600	600	3,000 (207)	1.00	1.00	5 in.hg.
PK1-13-02ACRL-M	2.96 (48)	2,500	600	3,000 (207)	1.00	1.00	5 in.hg.
PK1-17-02ACRL-M	3.94 (65)	2,500	600	2,500 (172)	1.00	1.00	5 in.hg.

Note: Use K Series pumps on 4x2 chassis applications only.