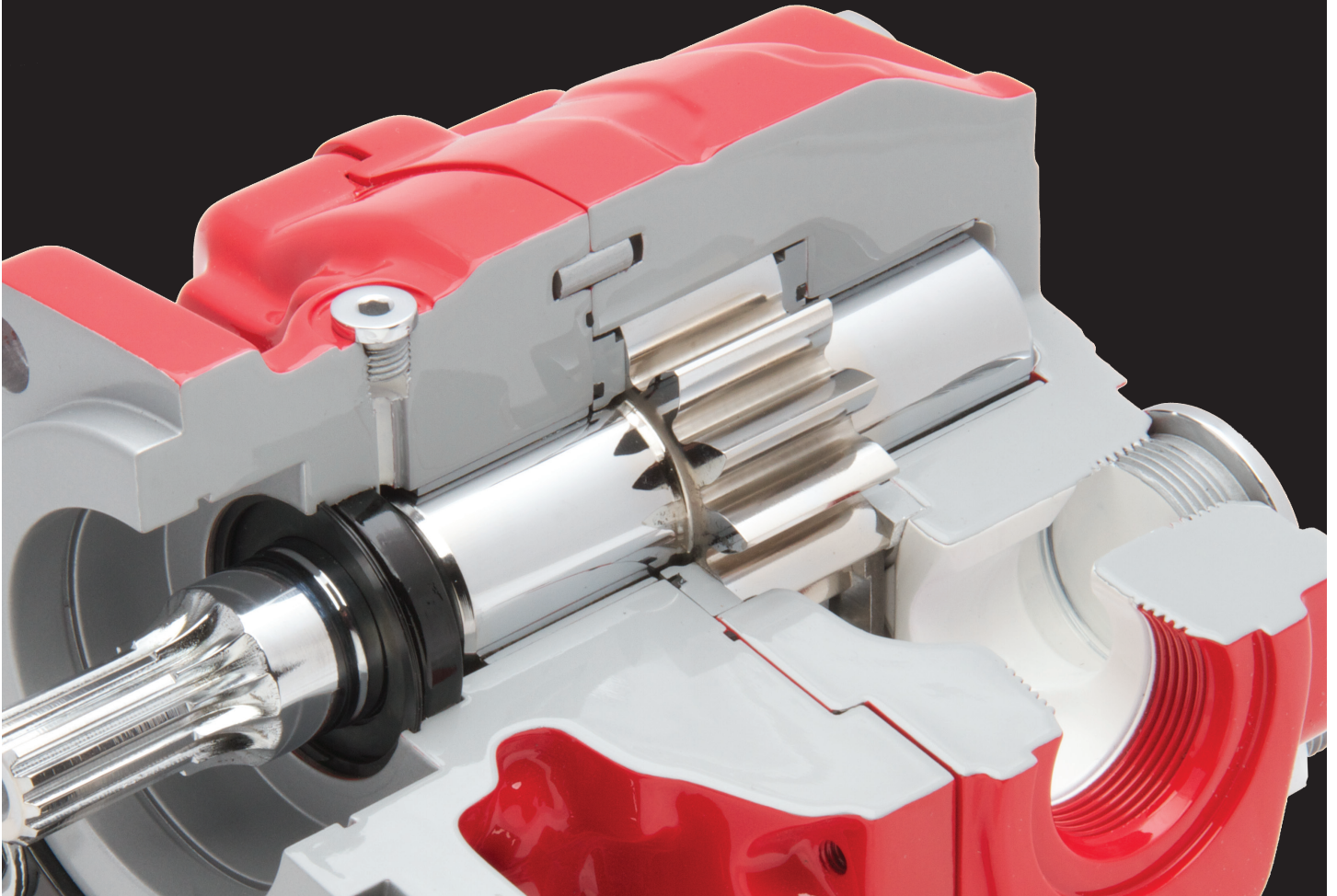


LONGER LIFE EXPECTANCY

— The Optimum Series, a gear pump that outlasts —



The latest line of gear pumps from Muncie Power Products is the Optimum Series - an innovative line of gear pumps/motors designed to provide users with long product life.

Its patented technology and bushing-style design allow for this longer life expectancy, as these features result in increased durability to better withstand normal wear.

While bushing-style, gear pumps are known for their ability to achieve longer life over their traditional, roller bearing counterparts, the Optimum Series outlasts even when compared to similar, bushing-style, gear pumps.



Muncie[®]
Power
Products

PATENTED TECHNOLOGY

With its patented OPTI-Grip® technology, the Optimum Series bushing-style, gear pumps utilize a two-piece casting design opposed to the traditional three-piece. It's this technology that allows the Optimum Series gear pumps to resist casting separation or ballooning, which significantly contributes to the line's longer life expectancy and high-performance capabilities.

Unlike previous pump technology within the United States that delivered lower pressures at higher flow rates, the OPTI-Grip technology used within the Optimum Series helps deliver higher pressures at given flow rates - which allows for more accurate control over system components and enhances overall hydraulic efficiencies.

OPTI-Grip technology results in the ability to use components that are not only smaller but that use less oil and weigh less. This translates into a reduction in overall vehicle weight, which can contribute to better fuel efficiency and savings.

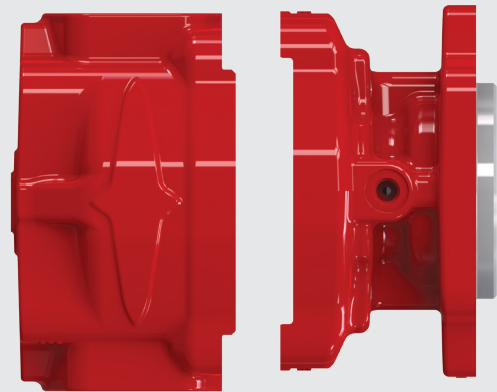
SUITABLE FOR...

The Optimum Series can be used in applications such as cranes, swaploaders, hook lifts and European-designed dump applications in addition to various motor-drive applications for blowers, vacuum pumps and product pumps.

OPTI-GRIP® DESIGN

Muncie Power's OPTI-Grip® technology results in a more rigid pump design, allowing for long life and maintained performance as the bushing-style pump has the ability to better withstand normal wear and tear along with higher pressures and spikes.

The Optimum Series' integral, two, piece castings are press fit together for greater structural integrity over other traditional designs.

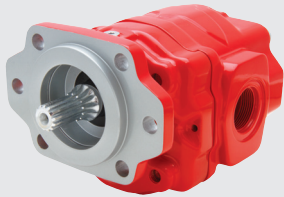


THE SPECS

A bushing-style pump/motor with a bi-rotational, four-port design, the Optimum Series features three frame sizes within the line including the W Series, X Series and Y Series. The Optimum Series possesses flow ranges from 6-63 GPM at 1,000 RPM and pressures up to 4,350 PSI as well as tandem or triple configuration options with extended studs for easy installation.

Muncie Power's Optimum Series' 13-tooth gear design provides smoother operation and reduces hydraulic noise. These gear pumps showcase a full-featured design that allows for reduced inventory requirements and installation flexibility in a cost-competitive package.

W SERIES

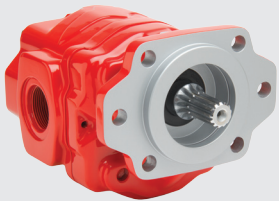


- Provides 8 displacements to cover lower flow rates, higher pressure requirements
- Bi-rotational, 4-port design is standard with speeds up to 3,600 RPM

SPECIFICATIONS

MAX OP. PRESSURE	4,350-3,000 PSI (300-210 BAR)
FLOW RATE (@ 1,000 RPM)*	6.3-25.4 GPM (23.9-96.2 LPM)
DISPLACEMENT	1.45-4.87 cu.in. (23.9-79.8 cc.)
APPROX. WEIGHT	40.8-50.7 lbs. (18.5-23.0 Kg.)

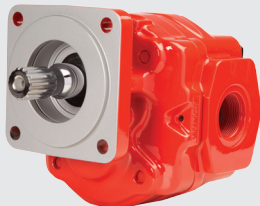
X SERIES



- Provides 9 displacements to cover medium to heavy flow, high-pressure requirements
- Bi-rotational, 4-port design is standard with speeds up to 3,000 RPM

MAX OP. PRESSURE	4,350-2,250 PSI (300-155 BAR)
FLOW RATE (@ 1,000 RPM)*	13.8-36.5 GPM (51.2-138.2 LPM)
DISPLACEMENT	3.18-8.43 cu.in. (52.1-138 cc.)
APPROX. WEIGHT	52.9-67.0 lbs. (24.0-30.4 Kg.)

Y SERIES



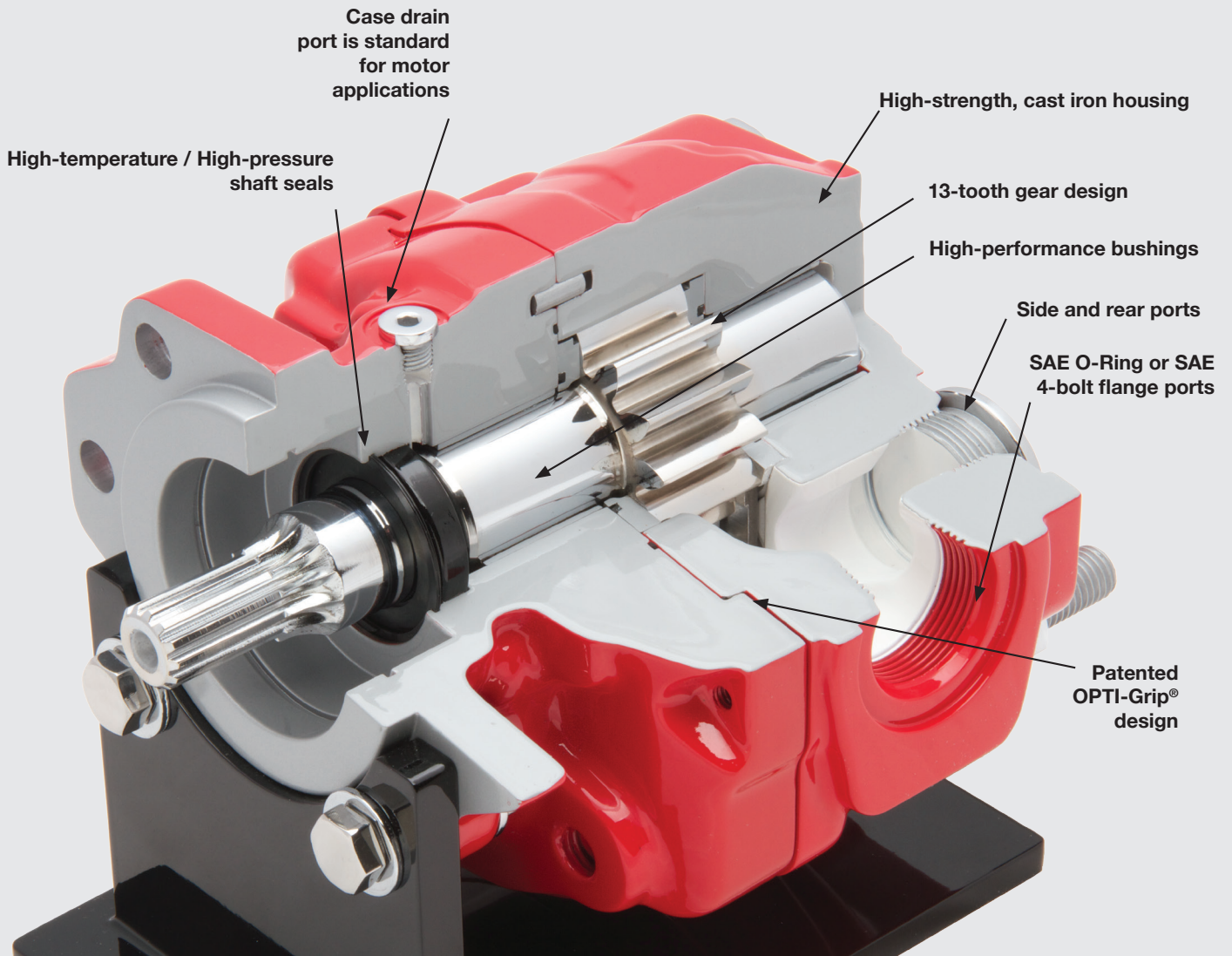
- Provides 9 displacements to cover high flow, high-demand applications
- Bi-rotational, 4-port design is standard with speeds up to 3,000 RPM

MAX OP. PRESSURE	4,000-2,500 PSI (275-172 BAR)
FLOW RATE (@ 1,000 RPM)*	22.2-62.3 GPM (84.0-235.8 LPM)
DISPLACEMENT	5.12-14.39 cu.in. (83-236 cc.)
APPROX. WEIGHT	76.9-100.7 lbs. (34.9-45.7 Kg.)

* Flow rates are theoretical.

The Optimum gear pumps/motors are available in tandem or triple configurations with extended studs for easy installation.

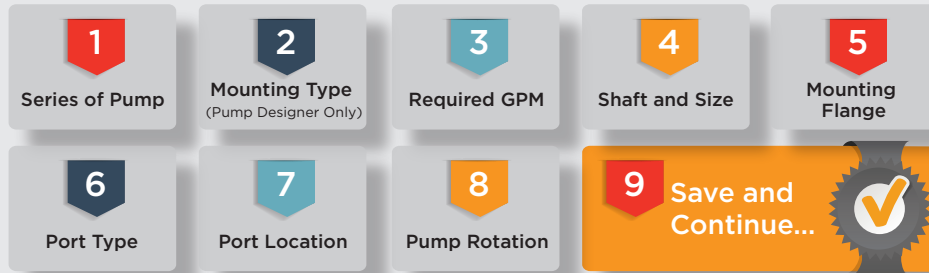
The Optimum Series bushing-style, gear pumps/motors achieve longer life expectancy compared to similar bushing-style and roller bearing, gear pumps. This means less maintenance, less downtime and the durability to better withstand and outlast normal wear.





Make Product Configuration Simple

9 STEPS to Designing an Optimum Gear Pump/Motor



Store and Send Optimum Pump Configuration



Resources

Literature

- View all PTO, pump and hydraulic product literature including specification brochures, service parts and installation instructions.

Competitor Crossover

- PTO crossover of competitor products
- Cylinder crossover of competitor products
- Type in product prefix and tool autofills with options (PTO only)

Part Search

- Enter part number or keyword and product options come up
- Estimated pricing
- Find where to buy

Useful Formulas

- 16 different useful formulas
- Enter required parameters and the result is immediately displayed
- Displays actual formula as well

DON'T WAIT. FIND THE PUMP THAT'S RIGHT FOR YOU TODAY.

Visit our interactive, specification tool and find the pump model that best suits your application needs. Our pump designer allows you to select the pump size needed for your flow requirements and apply the necessary options to obtain a model number for easy ordering.

munciepower.com/mpower



NEED HELP?

Please contact our customer service team for product-related questions, or visit us online for additional product information, literature, stocking locations and more.

800-367-7867 www.munciepower.com

